

Econowall is an economical drained and back-ventilated rain screen cladding system. Econowall panels are dry-set with interlocking longitudinal joints and rigid finished end conditions.

For any project demanding complete design flexibility, Econowall can accommodate artistic freedom with nearly unlimited finishes, profiles and size options at a competitive value. Econowall has finished end cap conditions and custom modules not available with roll formed products at competitive costs.

Econowall may be installed over continuous masonry, concrete, or as the outer cladding in a wall assembly that incorporates continuous insulation and a suitable air and water barrier. The system is also an excellent choice for open framing applications to clad un-conditioned spaces such as fascia, soffit, canopy or screen wall applications. Panels can be solid or perforated for soffit applications.

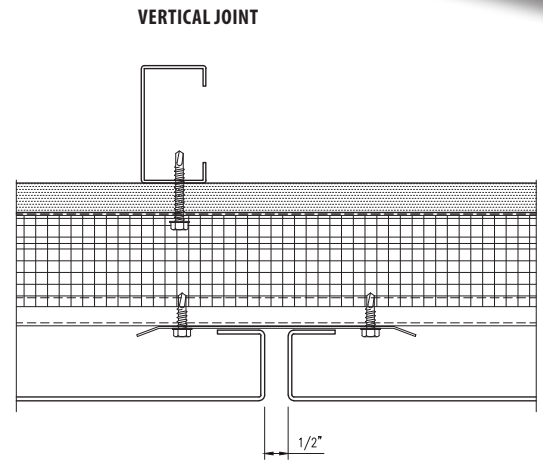
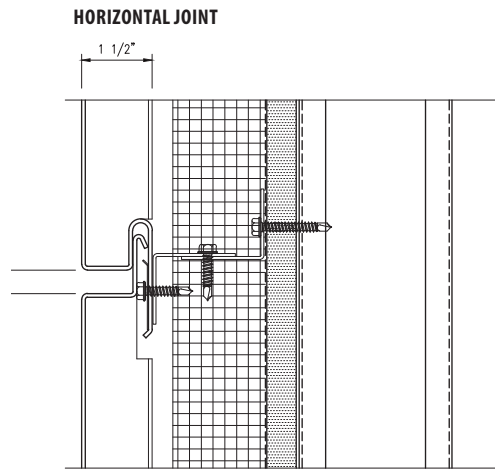
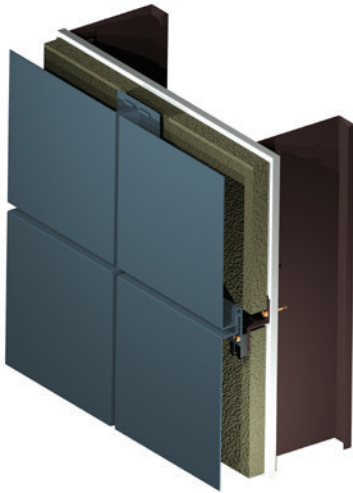


DETAILS

- Manufactured from pre-finished aluminum, stainless, or zinc with integral panel returns formed from a single piece of metal
- Fully mitered aluminum and stainless steel panels
- 0.5" (12.7 mm) standard horizontal and vertical joint with variable options
- Adjustable furring to address variable construction tolerances and ensuring vertical sealing to air and water barrier, minimizing shims
- Non-Combustible: minimal smoke or fuel contribution
- Avoids NFPA 285 complications by avoiding thermo-plastic cores
- All panel systems are reinforced/stiffened to resist deflection limits
- Panels install horizontally or vertically
- Concealed fastened using corrosion-resistant self-tapping screws
- As rain screen systems rely on gravity to drain water, all skyward facing surfaces, copings, sloped conditions and all perimeters must be sealed
- 100% recyclable with high percentage of post-consumer and industrial content, which may contribute to LEED credits

DESIGN OPTIONS

- Panels may be mixed and variable modules in flat or 3D profiles
- Variable reveals: Horizontal 0.125" - 2" (3.18 mm - 50.8 mm); Vertical 0.25" - 6" (6.35 mm - 152.4 mm)
- Panel end joints can be staggered to create running bond patterns
- Unlimited color options for aluminum
- Options for #4, #6, #8, and non-directional finishes for stainless steel
- Matching perforated and louvered panels
- May also be used for column, beam and pilaster cladding
- Integrated shop formed reveals



METAL SUBSTRATE AND FINISH OPTIONS

ALUMINUM

3003-H14 aluminum alloy-temper

Thickness: 0.08" (2.03 mm) standard, 0.05" (1.27 mm), 0.063" (1.60 mm), 0.09" (2.29 mm), ~~0.125 (3.18 mm) options~~

Finishes: Kynar®, architectural TGIC polyester powder coating, or anodized

STAINLESS STEEL

T304 or T316

Thickness: 18 gauge (0.05") (1.27 mm) standard and 16 gauge (0.063") (1.60 mm) option

Finishes: #4, #6, #8, and non-directional satin in smooth or custom embossed patterns

ZINC

Thickness: 0.059 (1.5 mm) standard and 0.047" (1.2 mm) option

Finishes: Consult with Metalwërks for options

Zinc is a natural metal which has specific properties that will limit its use. It must be adequately drained, ventilated and weeped when used in exterior applications to prevent excessive corrosion. Please consult Metalwërks for the appropriate uses for your project design.

PANEL SIZES

Widths: 6" (152.4 mm) to 36" (914.4 mm)*

Lengths: 12" (305 mm) to 160" (4,064 mm)*

Depth: 1.5" (38.1 mm) minimum

* Maximum panel size depends upon material, gauge, finish, and geometry

PANEL WEIGHT RANGE

(dependent upon gauge and geometry)

Aluminum: 2.18 - 2.825 lbs./ft²

Stainless Steel: 2.994 - 3.477 lbs./ft²

Zinc: 3.58 lbs./ft² - Consult with Metalwërks

Ranges provided for clarification. Consult with Metalwërks for further options.

ACCESSORIES

Flashing: As required at base or penetration conditions produced in the same material finish as the panel system

Coping: Wall copings may be produced with the same material as the wall panel system

Furring Channels: As required for proper mounting of panels

Fasteners: Type 304 stainless steel or cadmium-plated as recommended

Shims: High impact thermally-broken plastic shims to maintain co-planar surfaces

WARRANTY

Material & Workmanship: 1-year standard, with 2- or 5-year options

Finish Integrity: 10-year standard and up to 20-year for coated aluminum

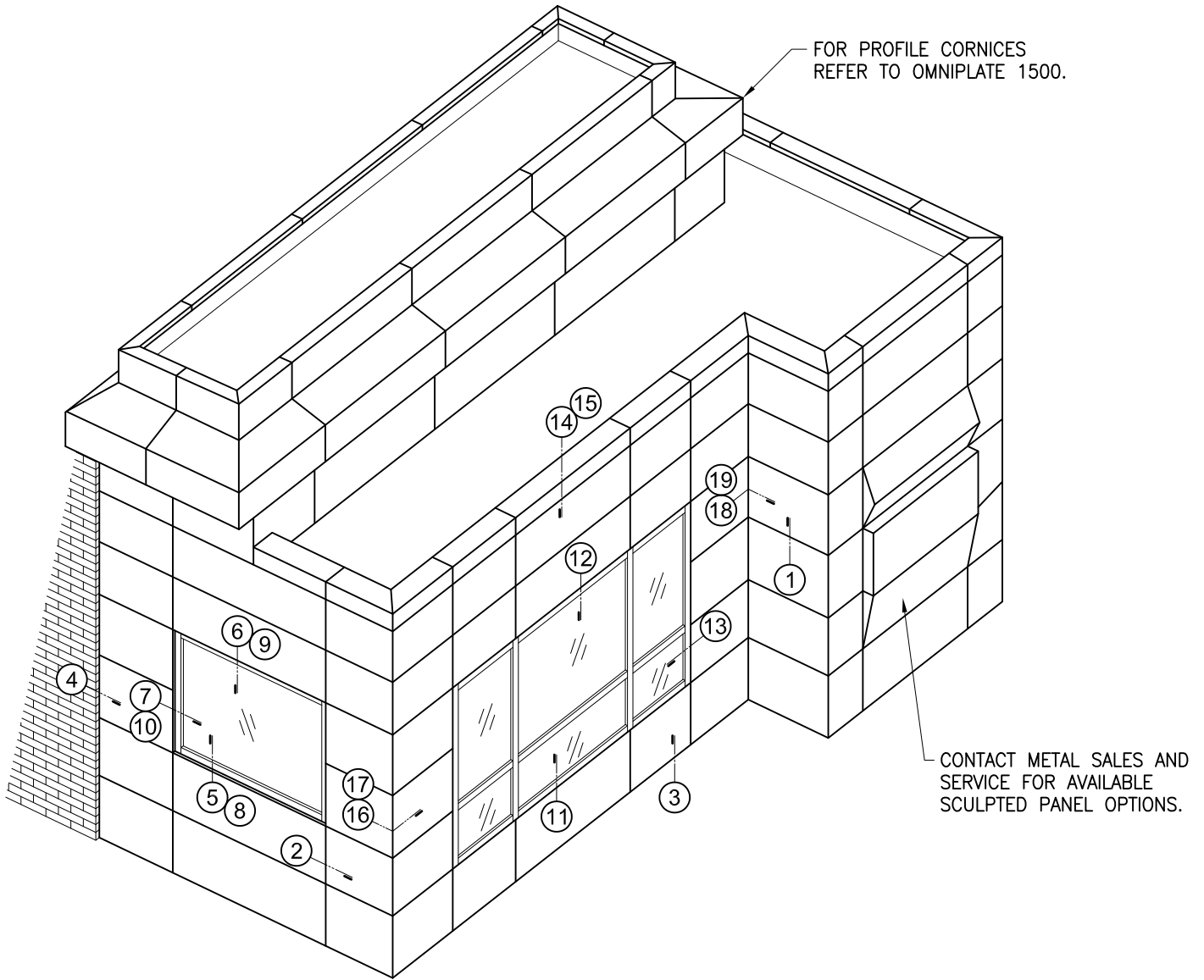
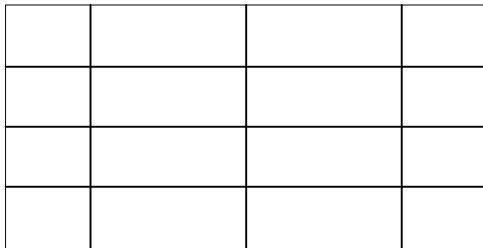


Table of Contents:

DETAIL DESCRIPTION

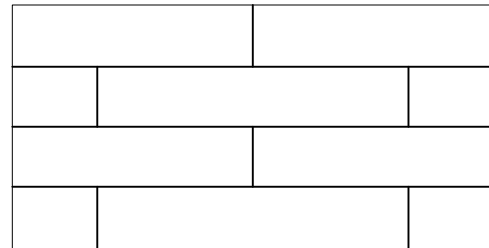
- 1 Horizontal Joint
- 2 Vertical Joint
- 3 Panel Sill
- 4 Panel Jamb
- 5 Storefront Sill
- 6 Storefront Head
- 7 Storefront Jamb
- 8 Recessed Storefront Sill
- 9 Recessed Storefront Head
- 10 Recessed Storefront Jamb
- 11 Curtain Wall Sill
- 12 Curtain Wall Head
- 13 Curtain Wall Jamb
- 14 Standard Coping
- 15 Optional Coping
- 16 Standard Outside Corner
- 17 Optional Outside Corner Trim Panel
- 18 Optional Outside Mitered Corner Panel
- 19 Standard Inside Corner

Elevation Joint Options

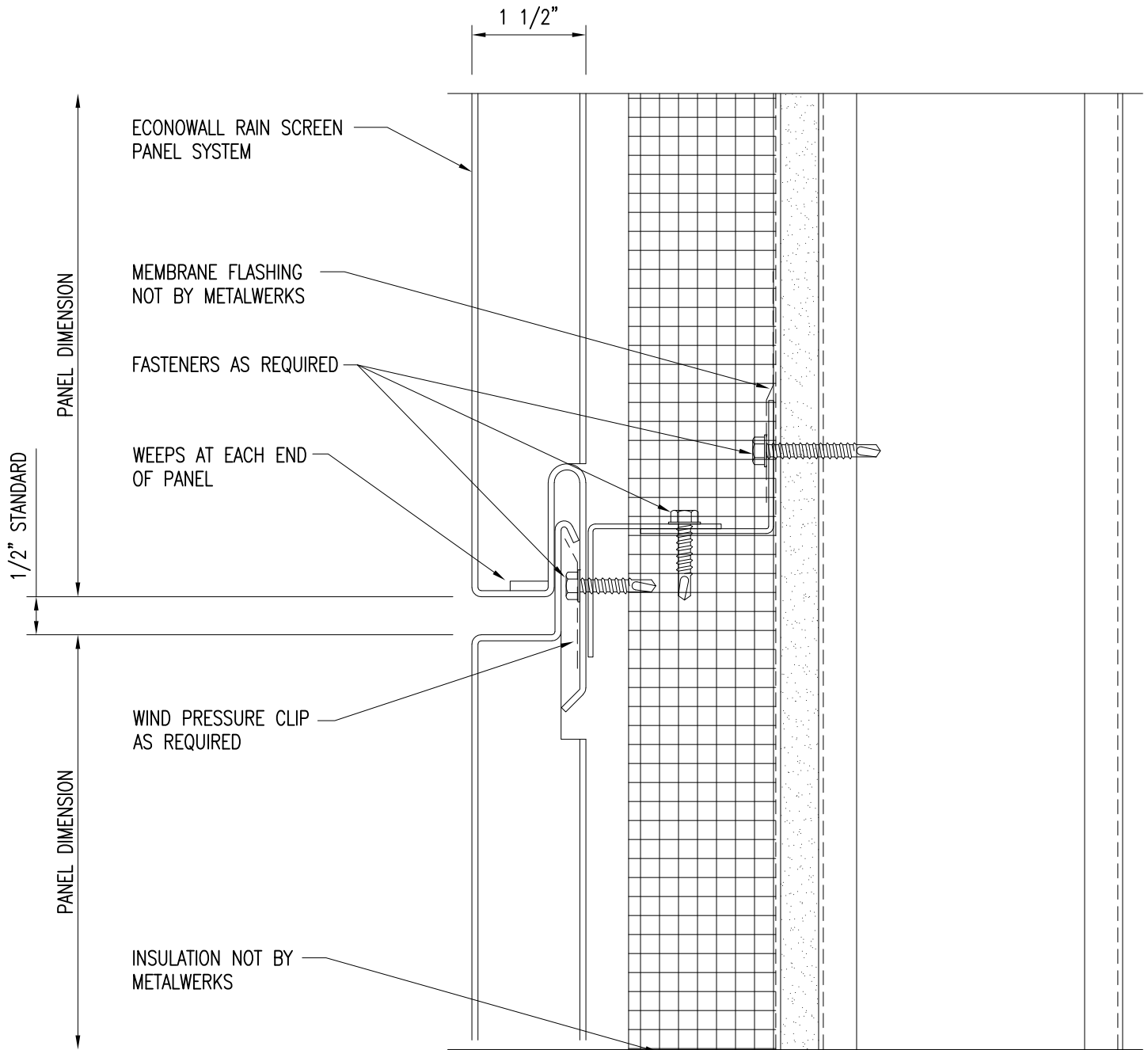


Linear Joints

OR



Running Bond



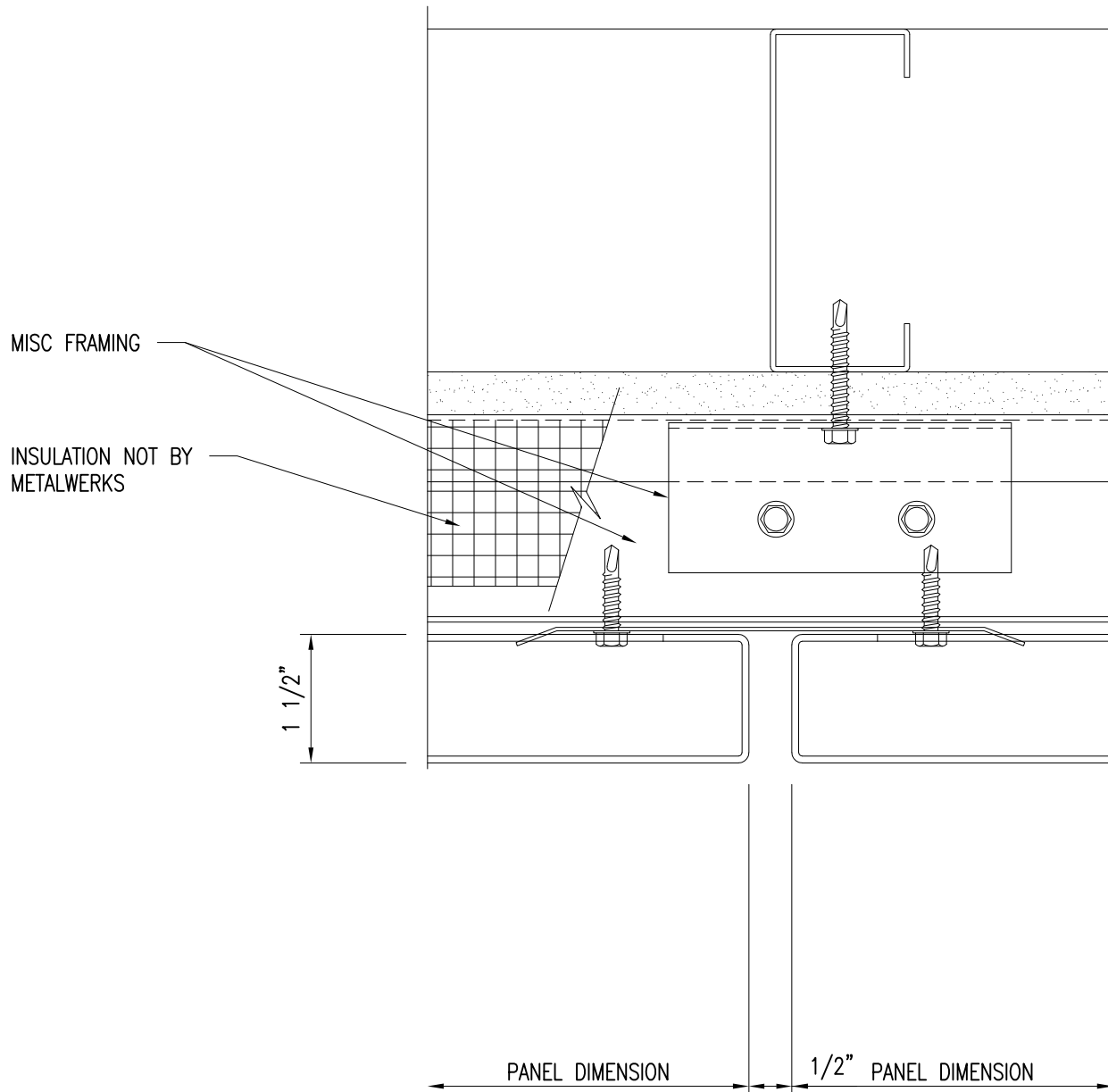
OPTIONAL REVEAL SIZES:

- 1/2" STANDARD
- 1/8" UP TO 1 1/2" IN 1/8" INCREMENTS OPTIONAL

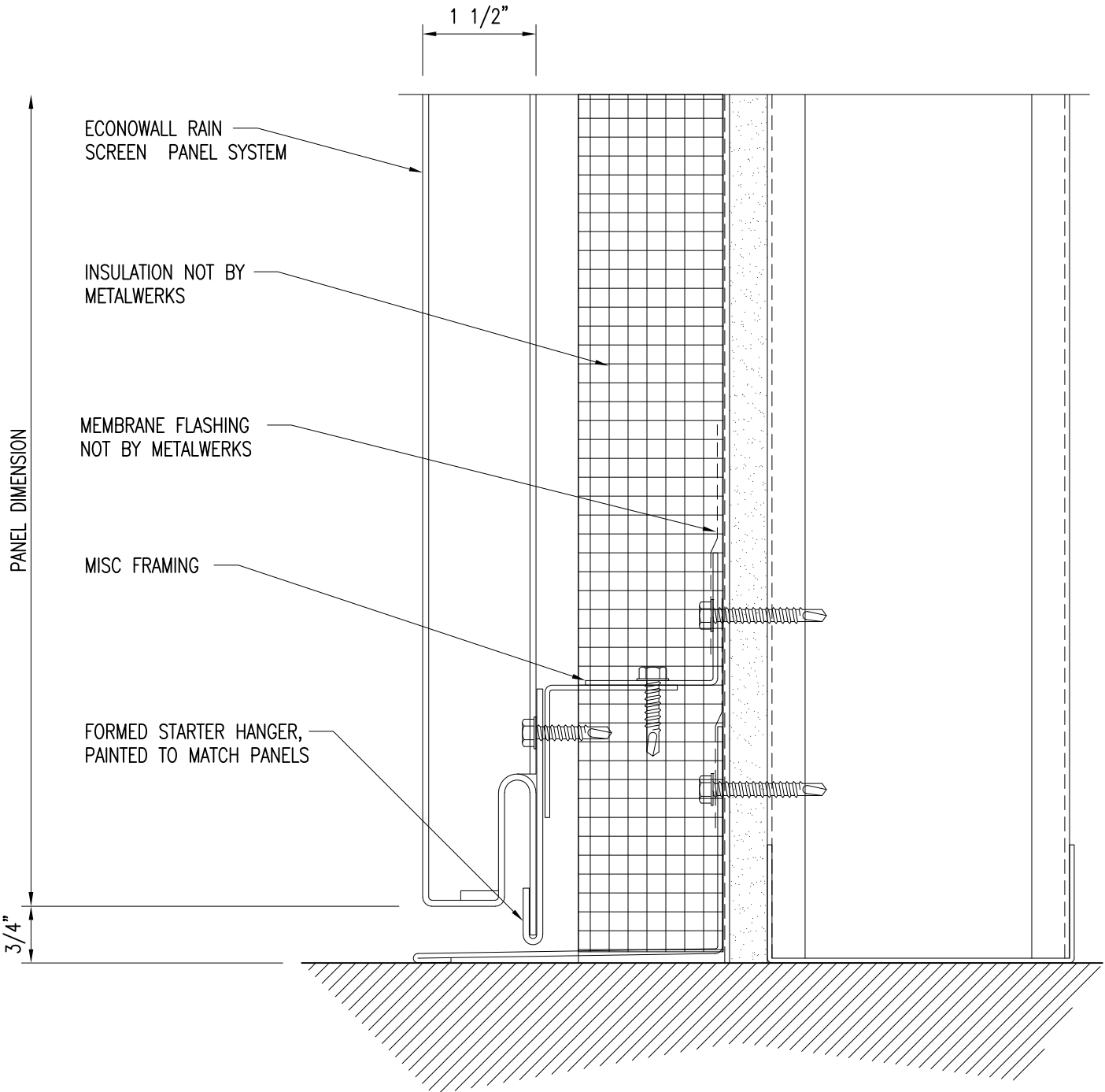
PRIMARY WALL CONSTRUCTION AND INSULATION NOT BY METALWERKS. 16 GAGE METAL STUDS MINIMUM REQUIRED

1) Horizontal Joint

PRIMARY WALL CONSTRUCTION AND INSULATION
NOT BY METALWERKS. 16 GAGE METAL STUDS
MINIMUM REQUIRED



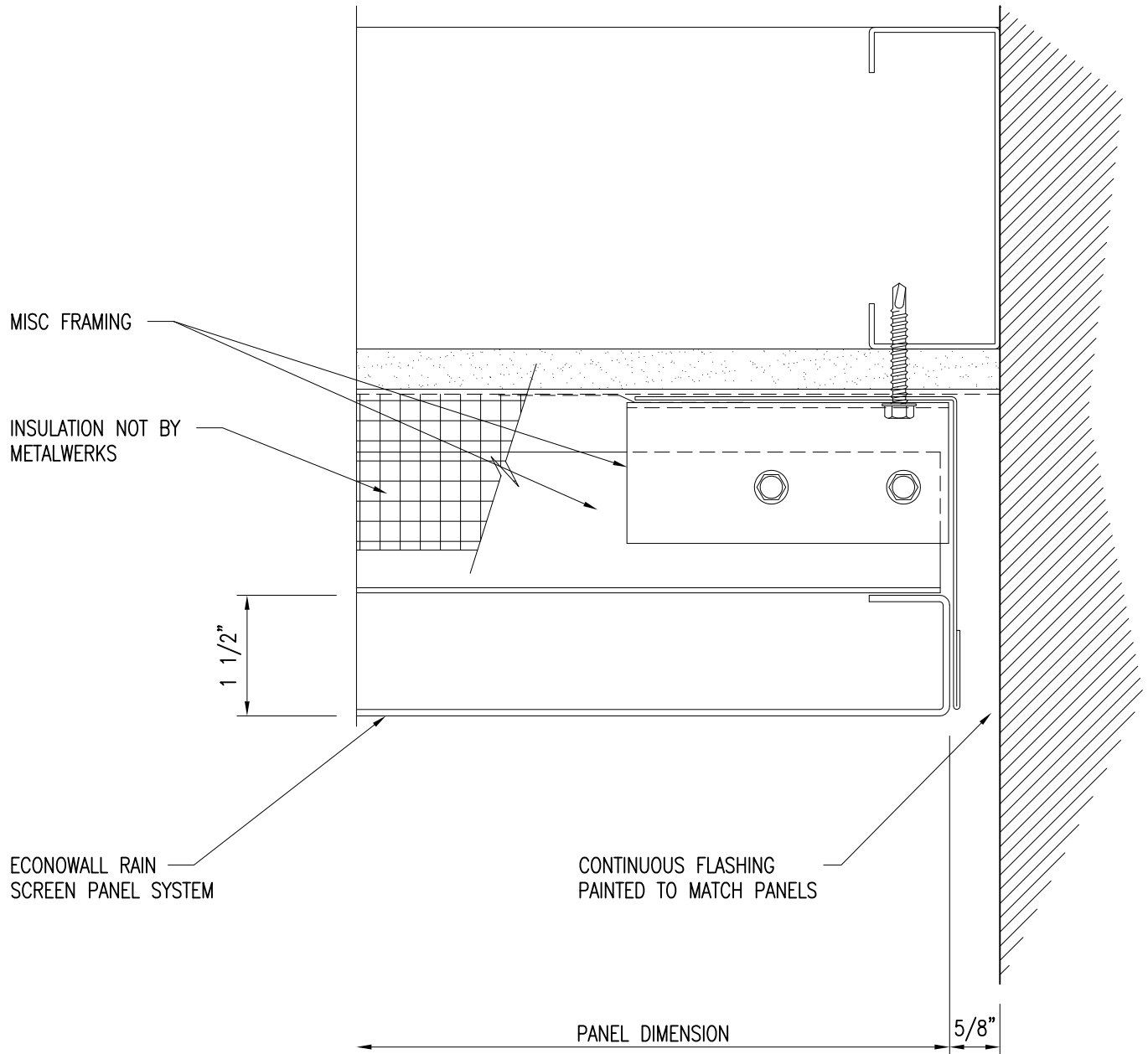
2) Vertical Joint



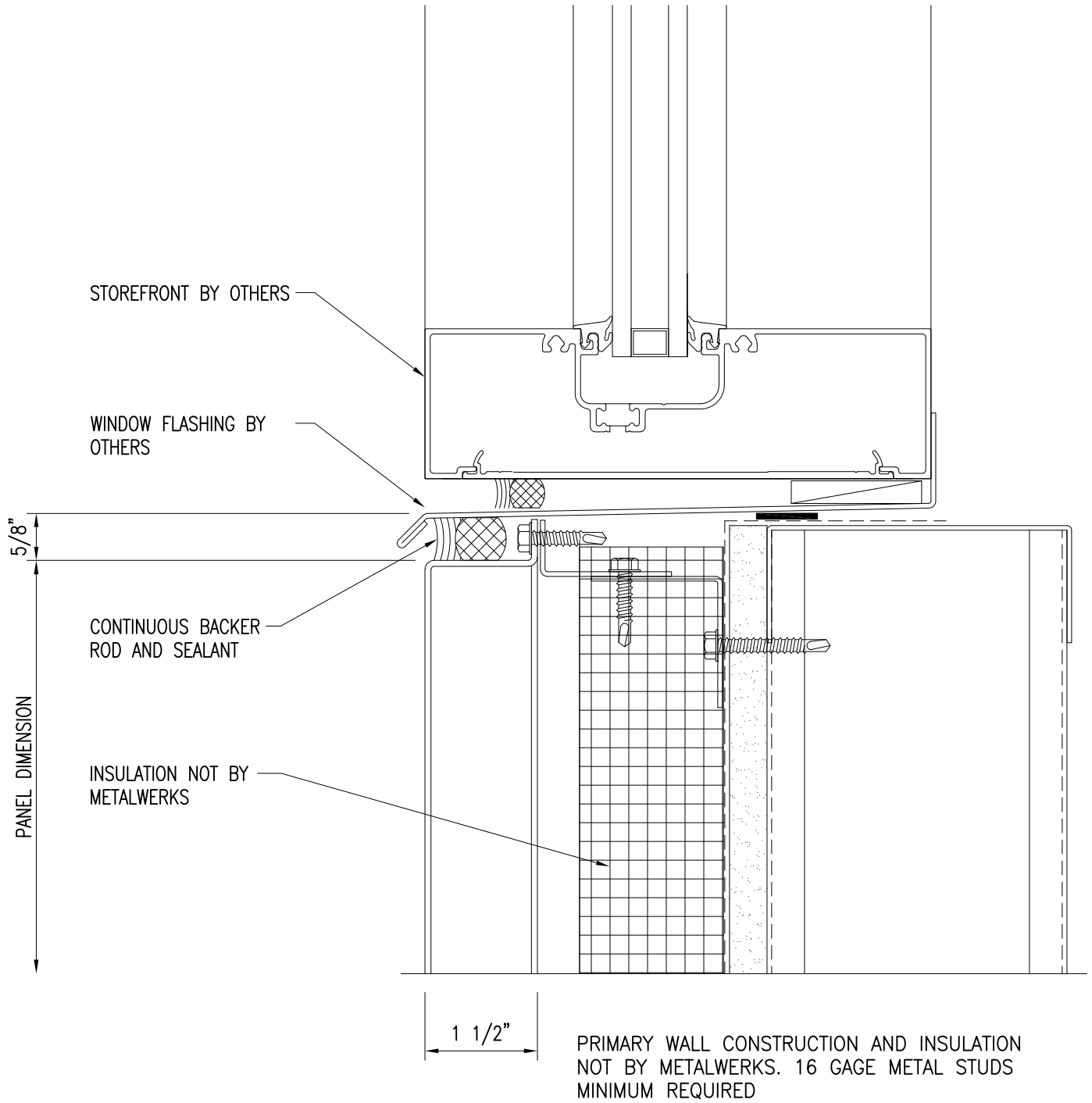
PRIMARY WALL CONSTRUCTION AND INSULATION NOT BY METALWERKS. 16 GAGE METAL STUDS MINIMUM REQUIRED

3) Panel Sill

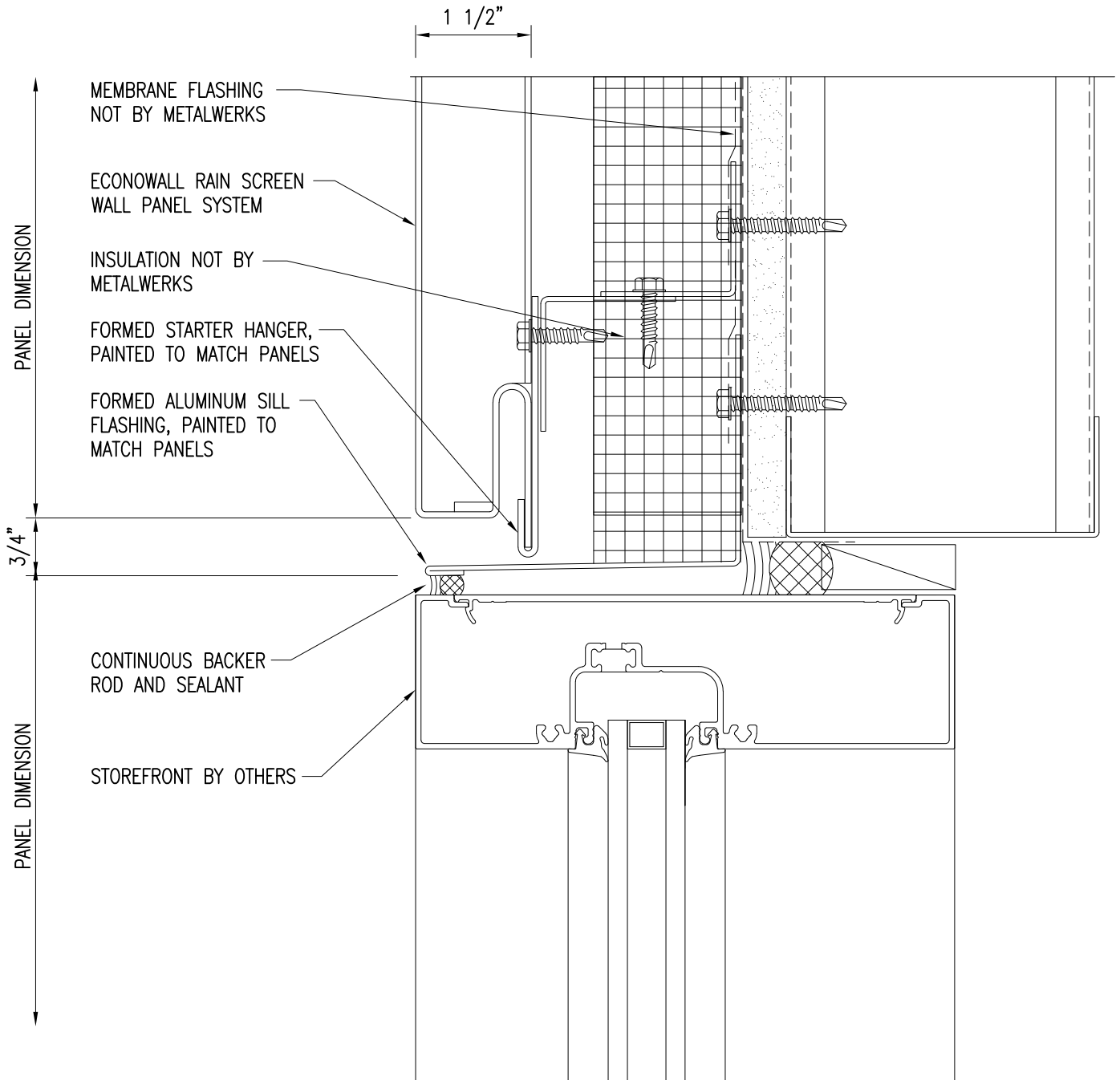
PRIMARY WALL CONSTRUCTION AND INSULATION
NOT BY METALWERKS. 16 GAGE METAL STUDS
MINIMUM REQUIRED



4) Panel Jamb Detail



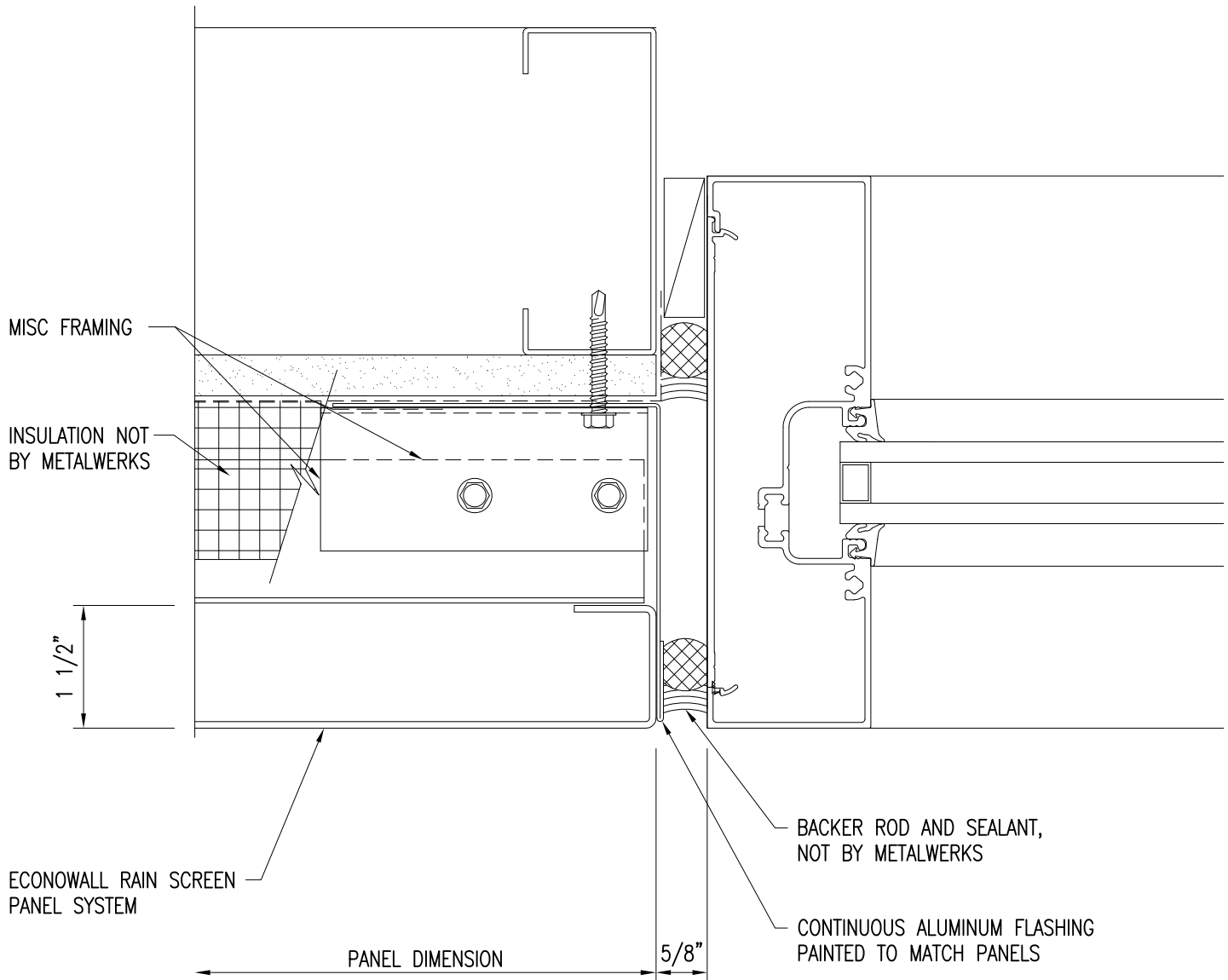
5) Storefront Sill



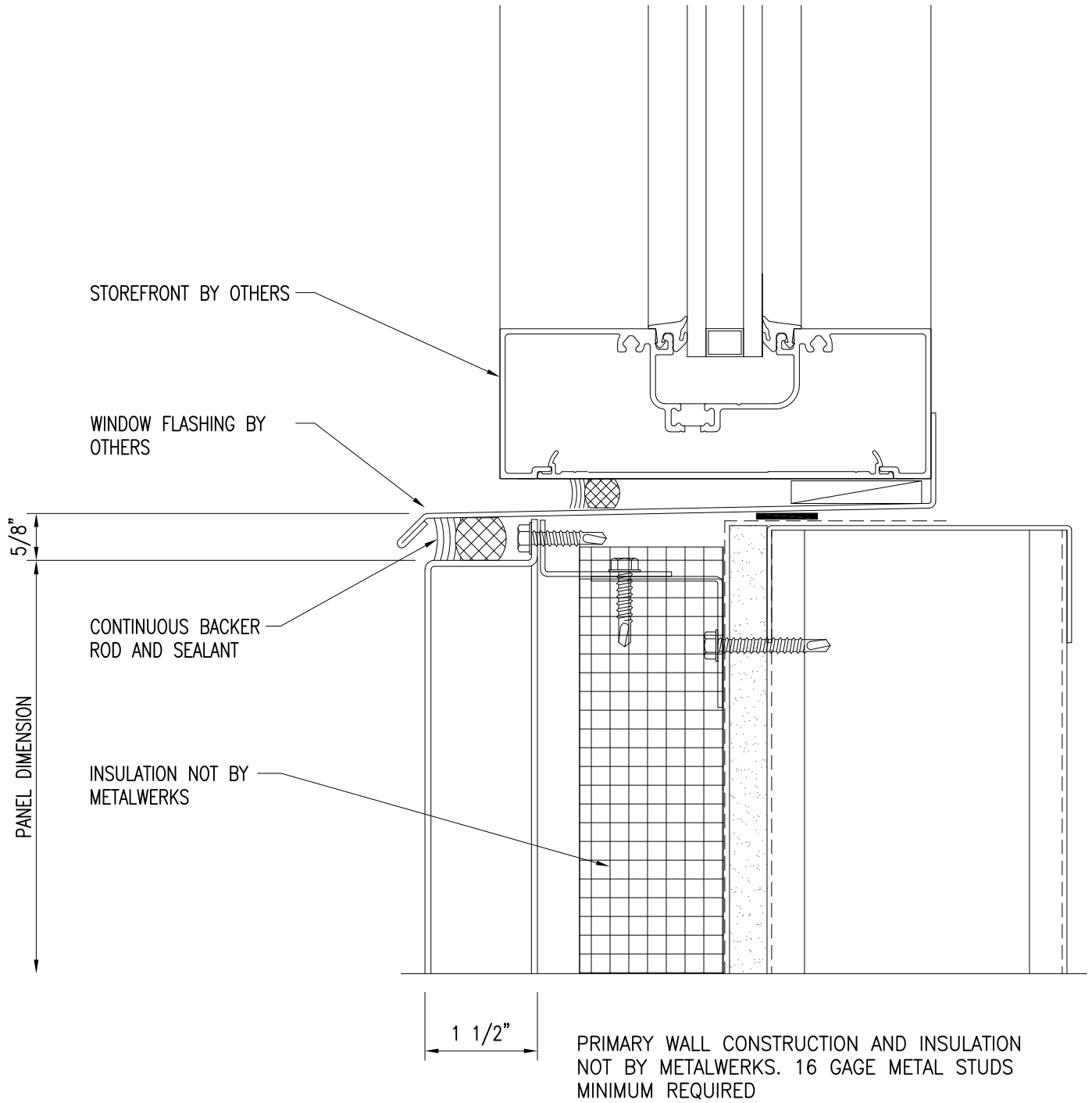
PRIMARY WALL CONSTRUCTION AND INSULATION
NOT BY METALWERKS. 16 GAGE METAL STUDS
MINIMUM REQUIRED

6) Storefront Head

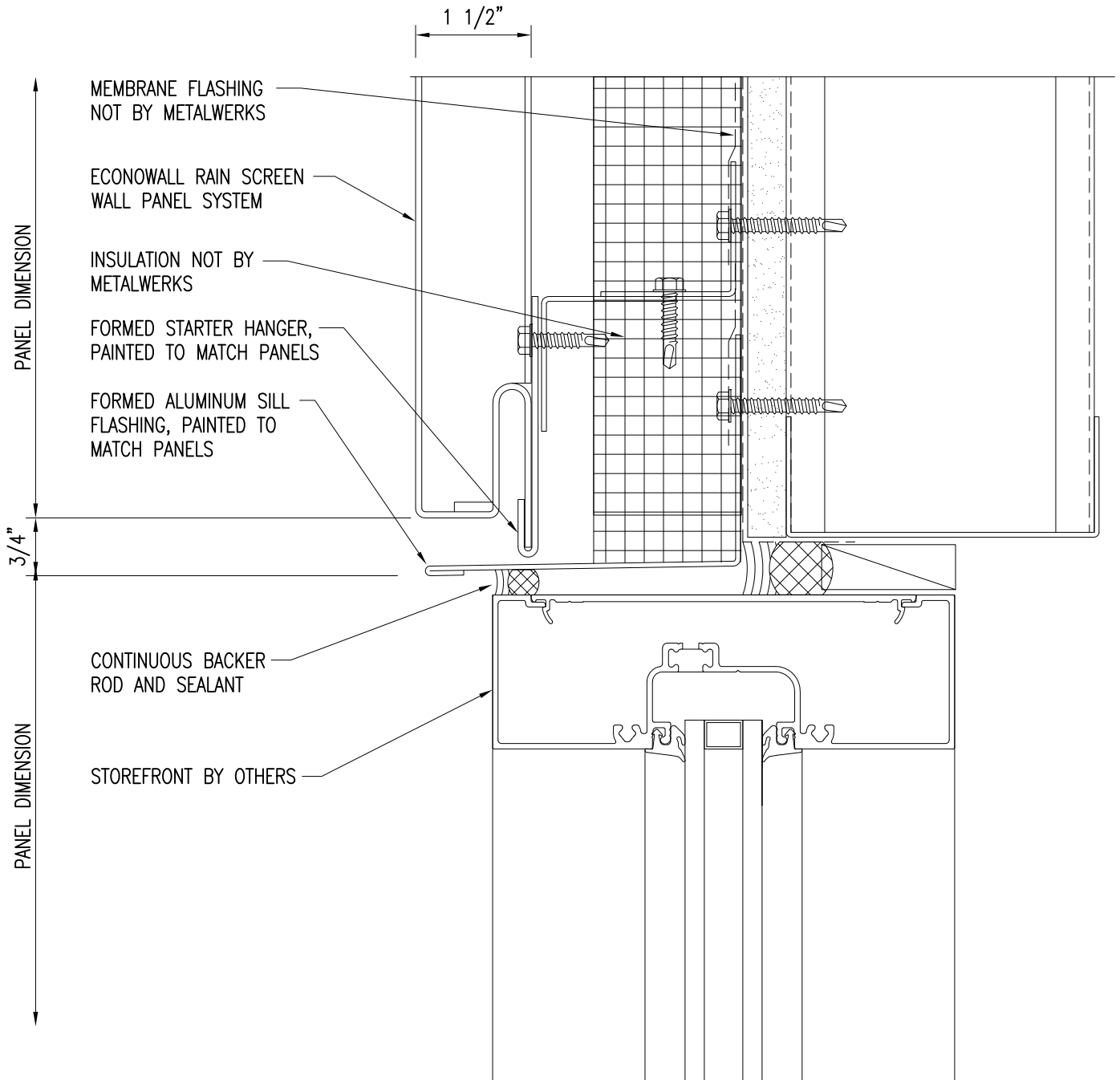
PRIMARY WALL CONSTRUCTION AND INSULATION
NOT BY METALWERKS. 16 GAGE METAL STUDS
MINIMUM REQUIRED



7) Storefront Jamb



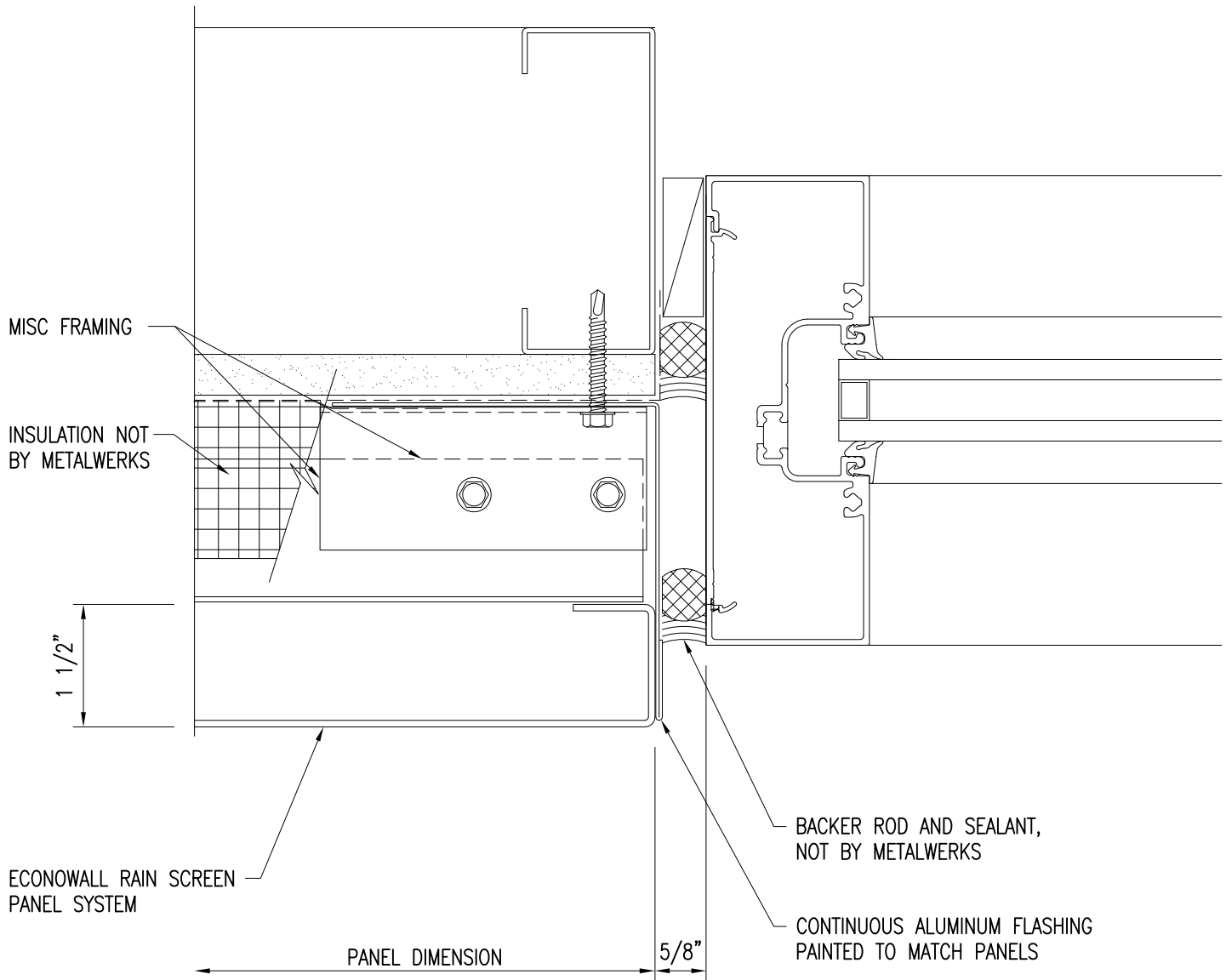
8) Recessed Storefront Sill



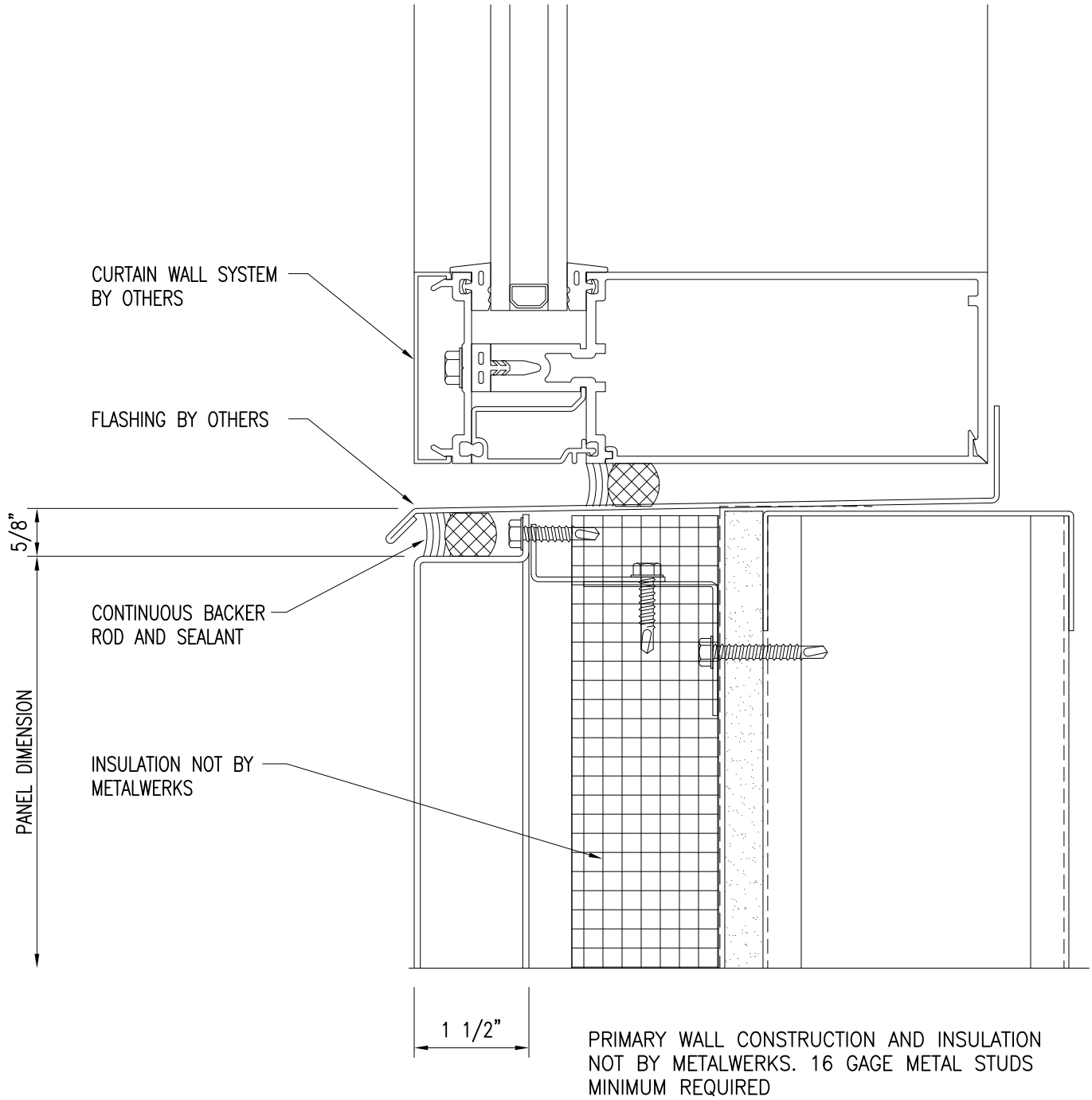
PRIMARY WALL CONSTRUCTION AND INSULATION NOT BY METALWERKS. 16 GAGE METAL STUDS MINIMUM REQUIRED

9) Recessed Storefront Head

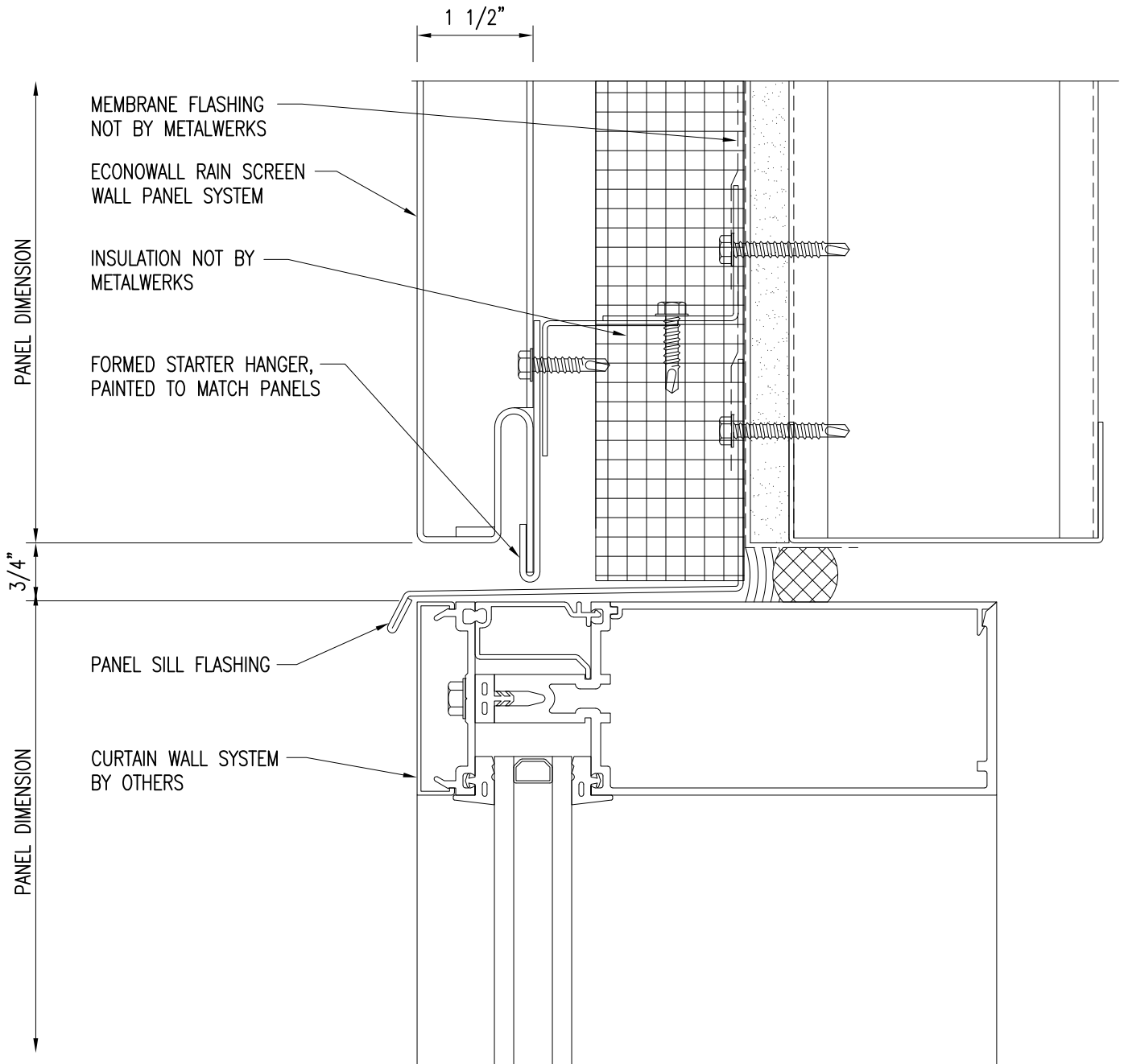
PRIMARY WALL CONSTRUCTION AND INSULATION
NOT BY METALWERKS. 16 GAGE METAL STUDS
MINIMUM REQUIRED



10) Recessed Storefront Jamb



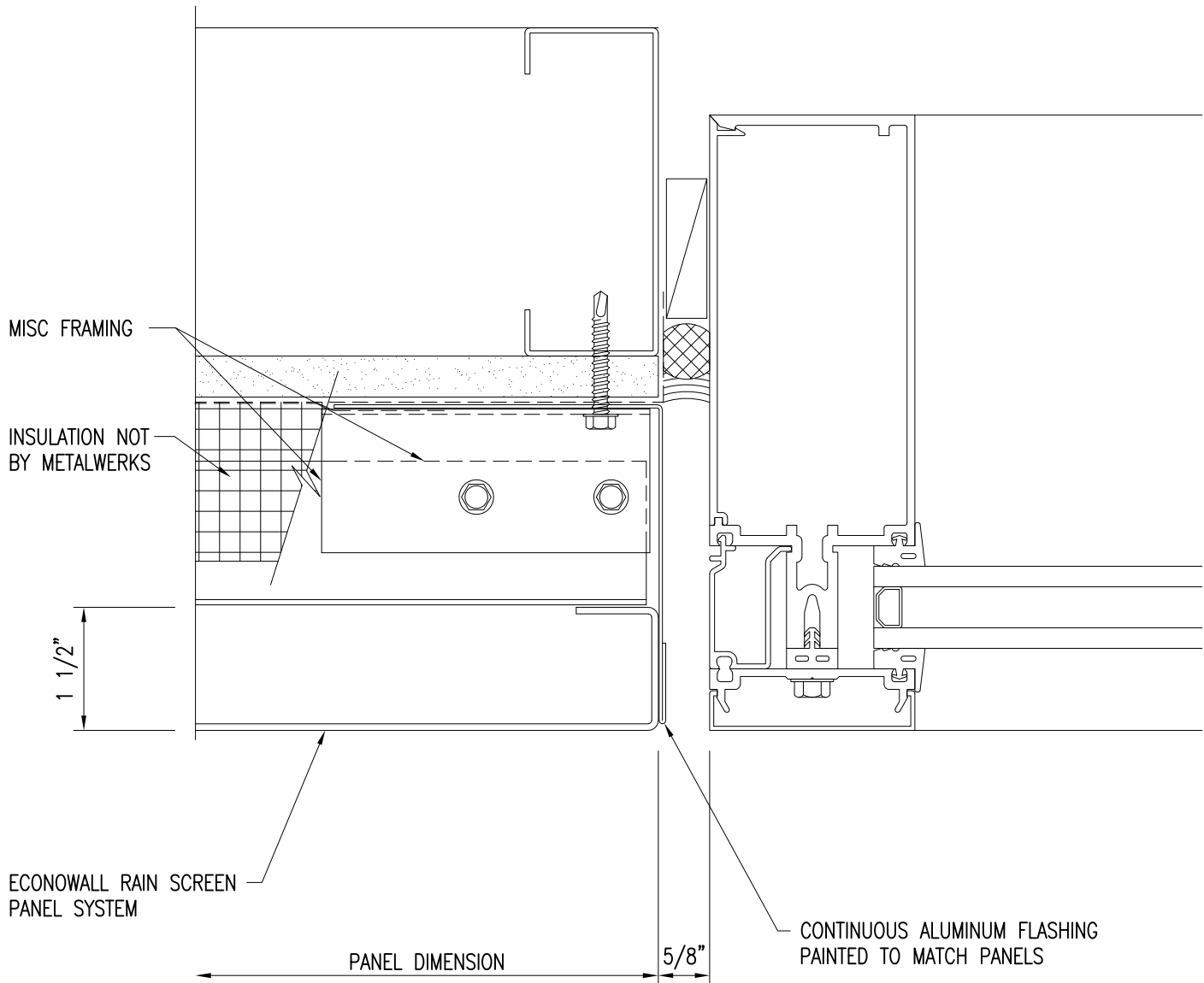
11) Curtain Wall Sill



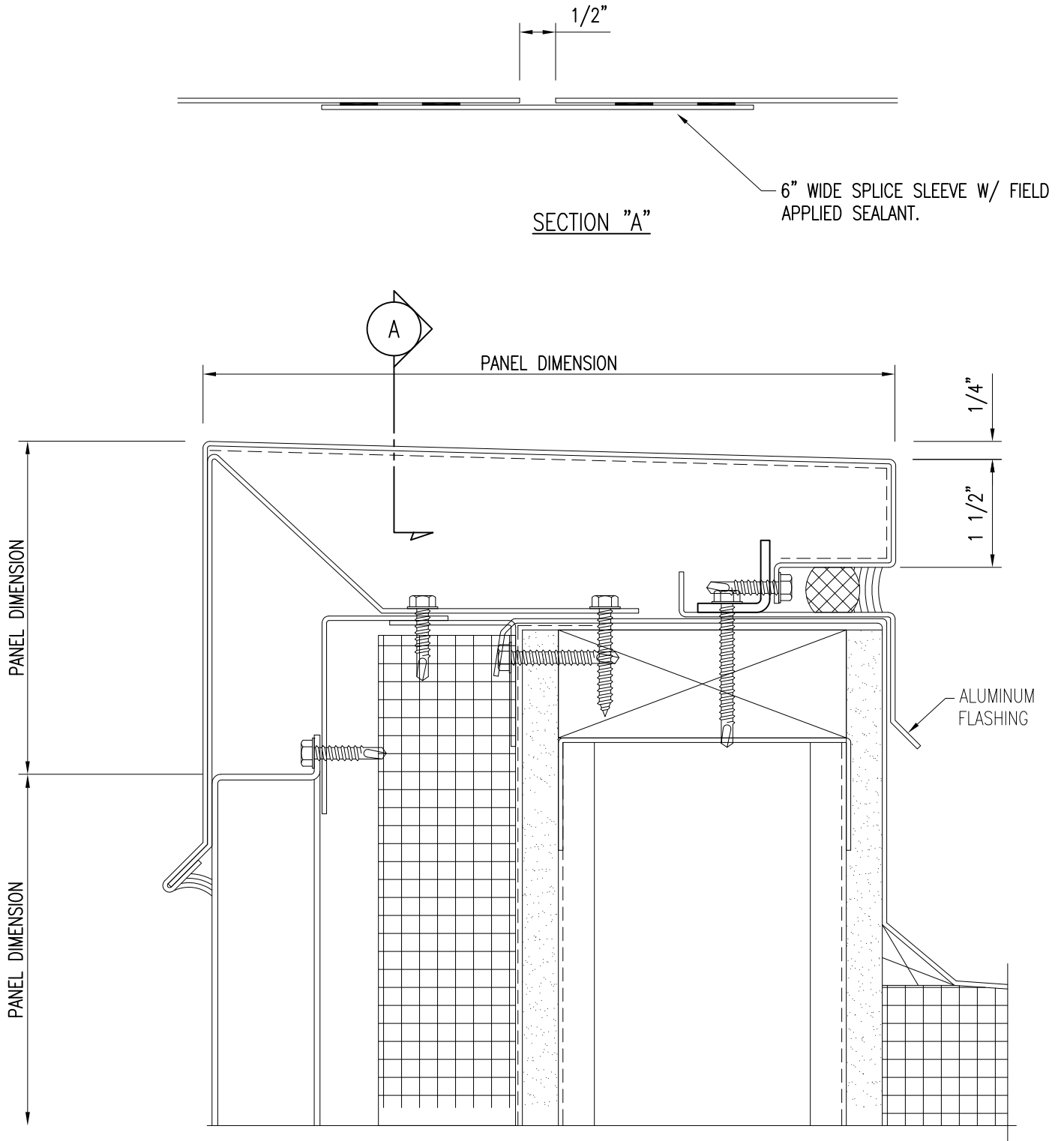
PRIMARY WALL CONSTRUCTION AND INSULATION NOT BY METALWERKS. 16 GAGE METAL STUDS MINIMUM REQUIRED

12) Curtain Wall Head

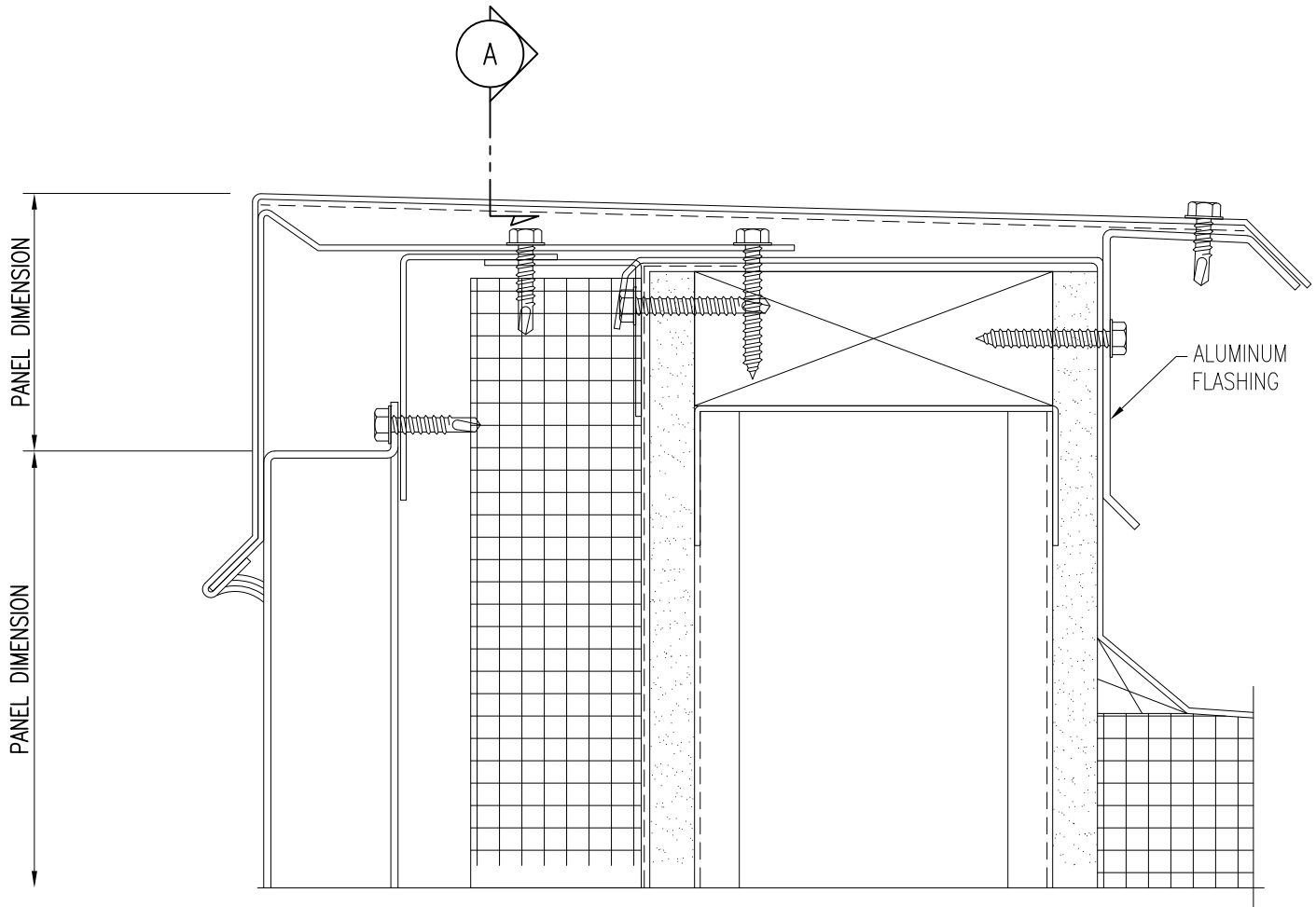
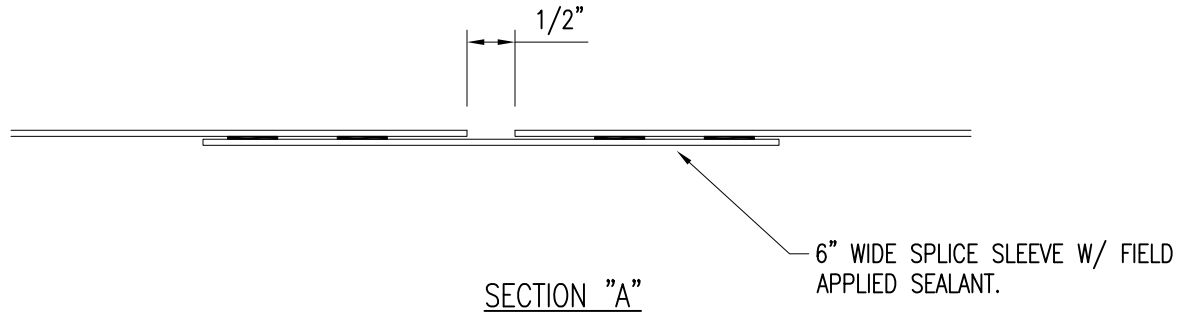
PRIMARY WALL CONSTRUCTION AND INSULATION
NOT BY METALWERKS. 16 GAGE METAL STUDS
MINIMUM REQUIRED



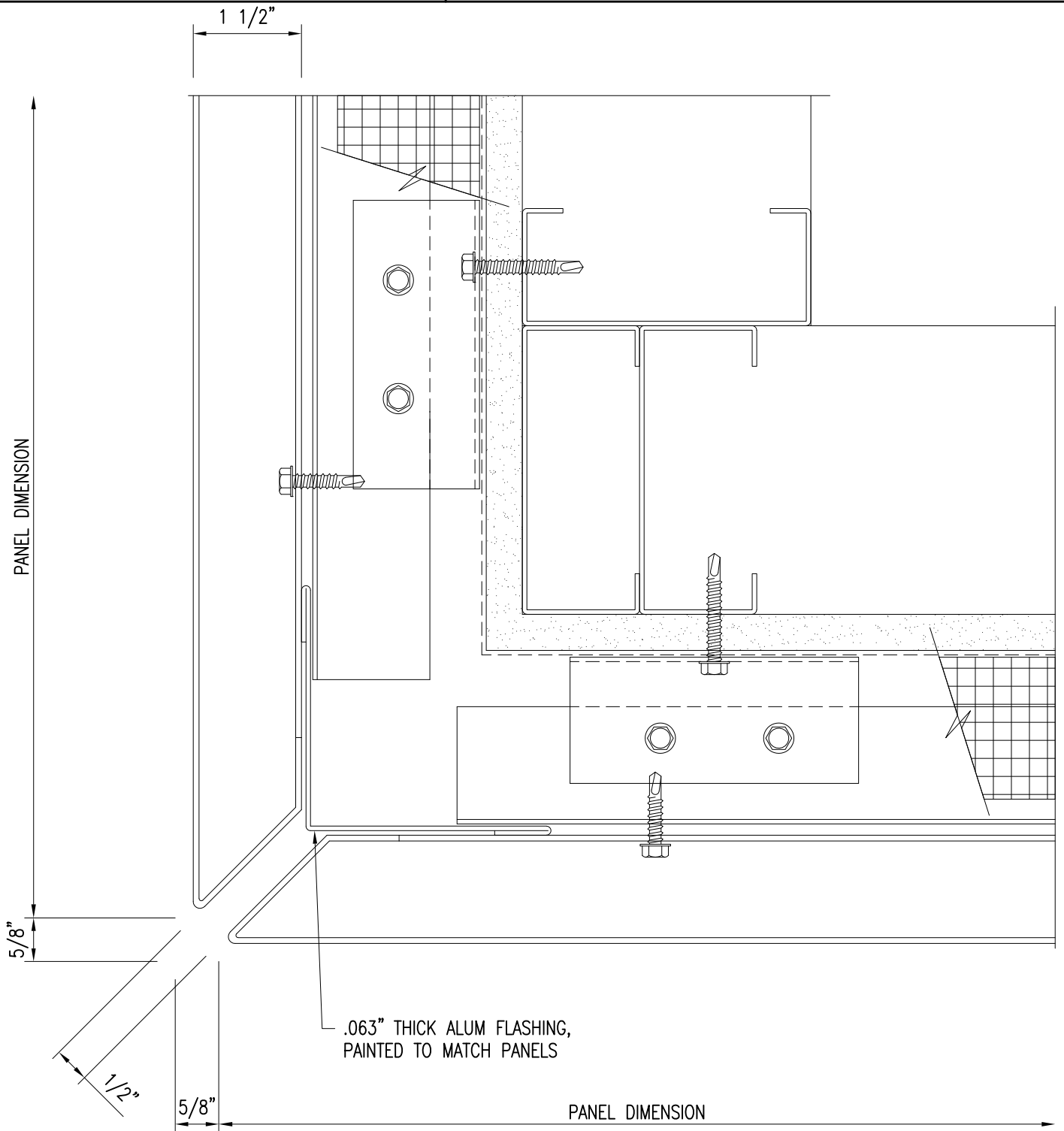
13) Curtain Wall Jamb



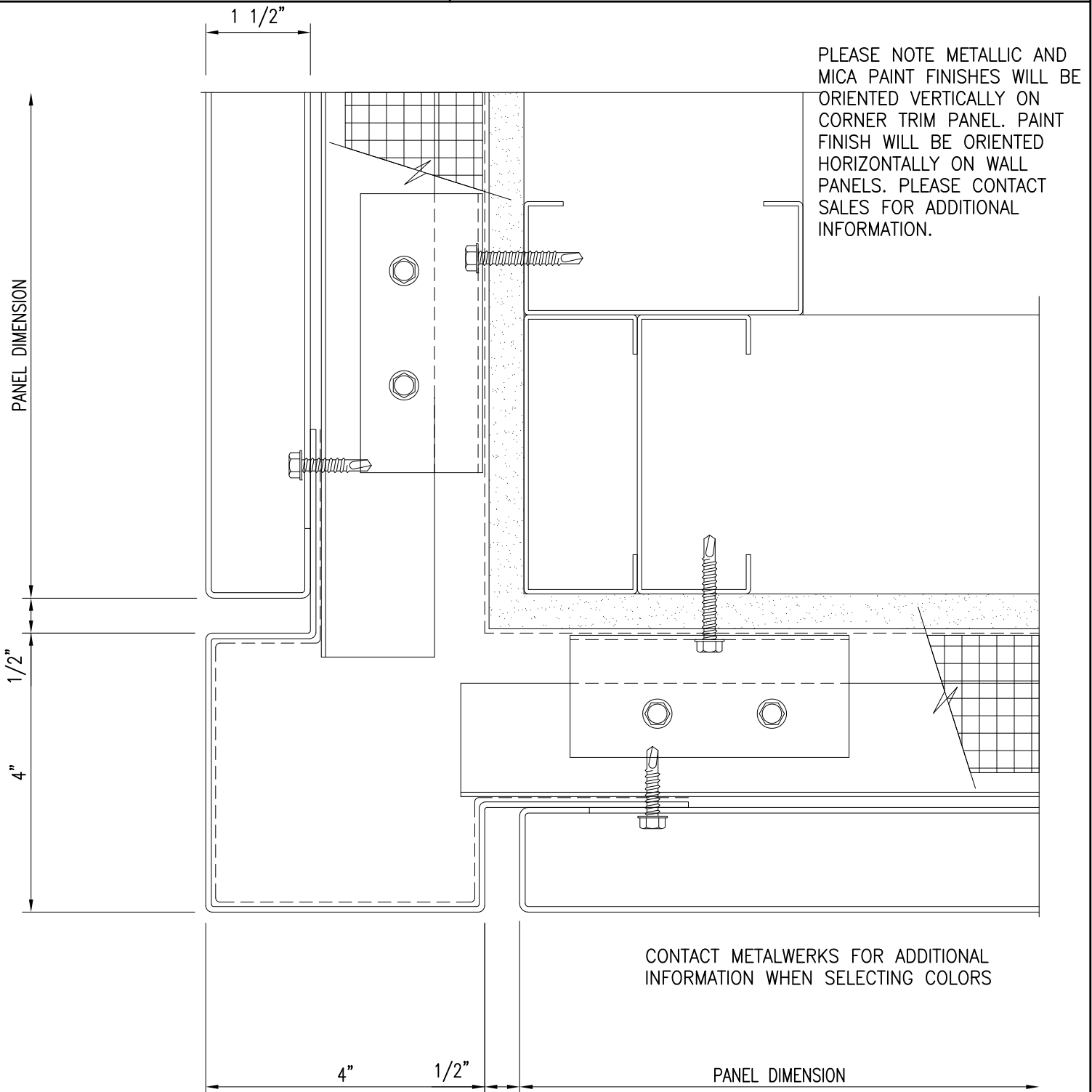
14) Standard Coping



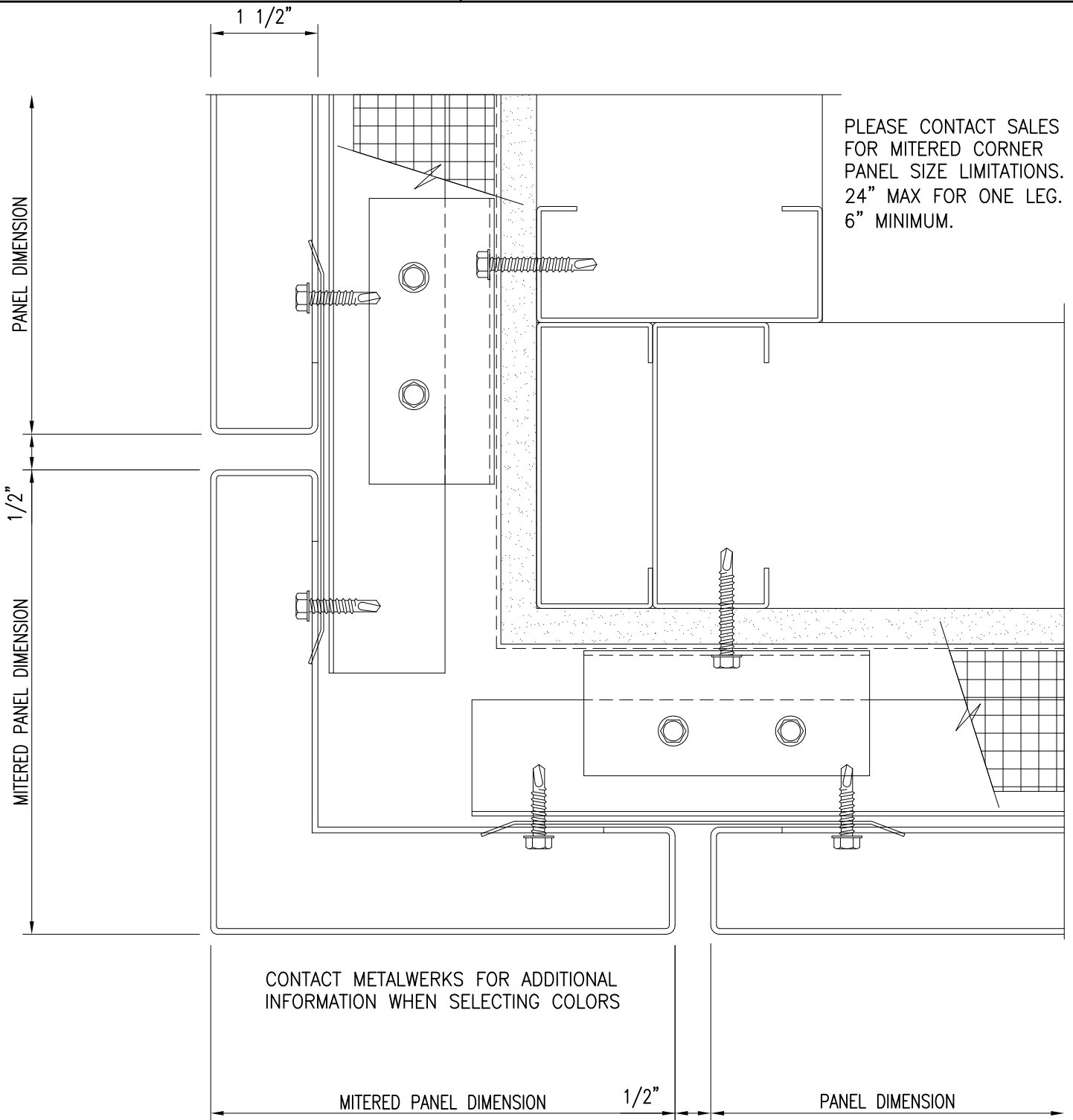
15) Optional Coping



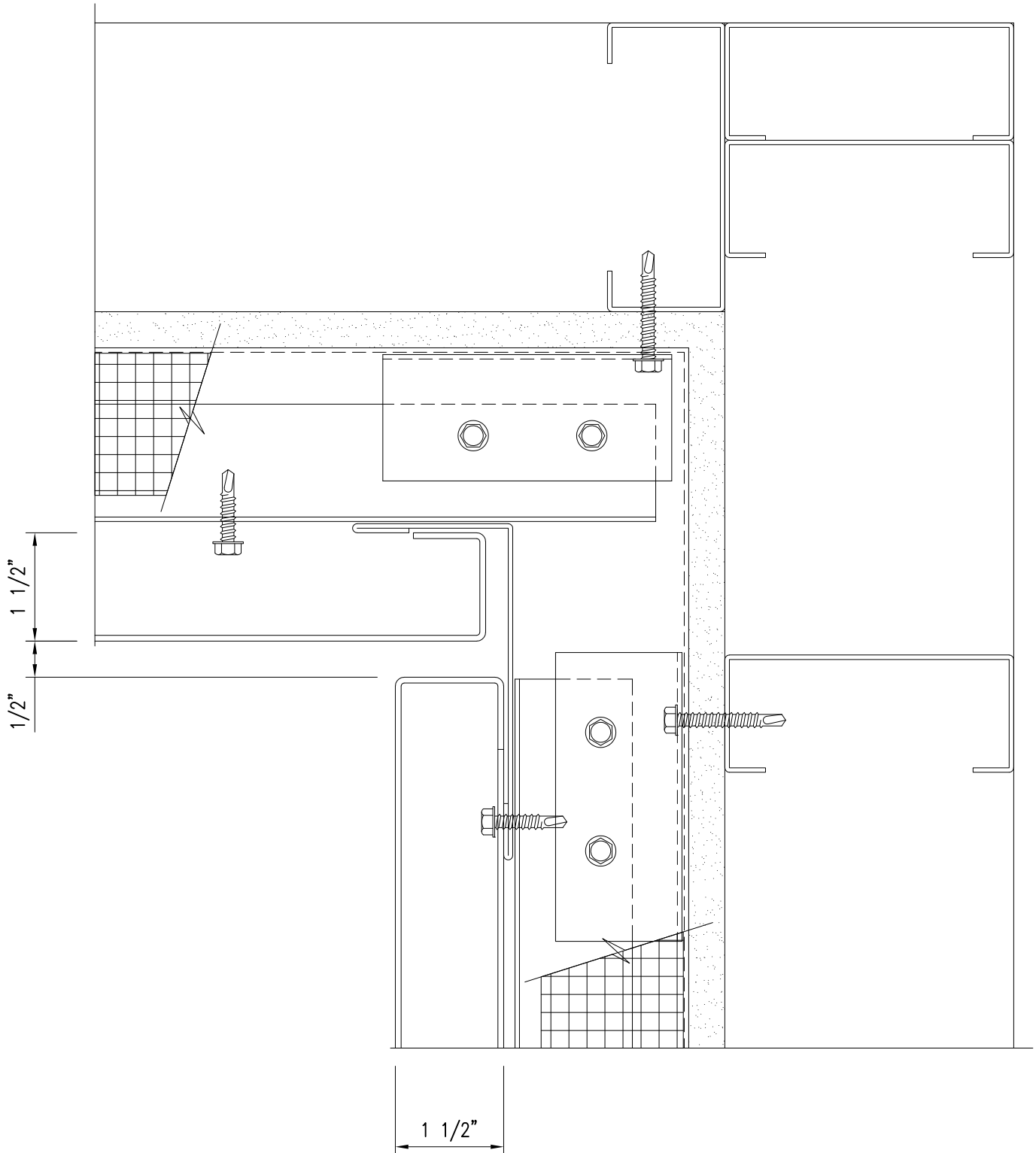
16) Standard Outside Corner



17) Optional Outside Corner Trim Panel



18) Optional Outside Mitered Corner Panel



19) Standard Inside Corner