

Efficiency and fascinating free-floating effects are hallmarks of Metalwërks Arcwall™ Spline wall system. With Arcwall Spline, the cut edges of the face plate material are the panels' edges, a capability in metal you can only achieve with plate.

Arcwall Spline features concealed extruded aluminum frames with matching or contrasting joint fillers, or "Splines," in variable sizes, resulting in a wide range of pattern options. The frame's universal design allows for more flexibility in unique geometry situations, such as Portals or Canopy applications.

The fabrication efficiency of Arcwall Spline, combined with Metalwërks simplified panel attachment options that speed installation, make for a highly competitive, high-end rainscreen wall system. Arcwall Spline panels are factory assembled with a flat plate facing structurally adhered to an extruded aluminum panel frame and may be flat or curved.

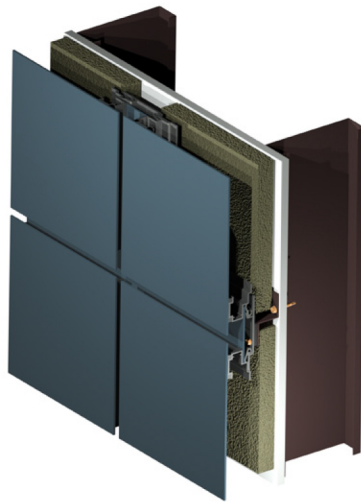
Two-dimensional geometries of panel facings are virtually limitless and panels may be installed in any direction vertical, horizontal or sloped orientations. Joint sizes can be variable and reveals can use a complementary or contrasting finish. Or, bent edges can be incorporated at panel corners for softer treatment.

All Arcwall systems install with concealed fasteners over continuous masonry, concrete, or as the outer cladding in a wall assembly that incorporates continuous insulation and a suitable air and water barrier. Solid metal panels are particularly useful where metal panels are used in high-traffic areas due to superior impact performance compared to other composite metal panel cladding products.

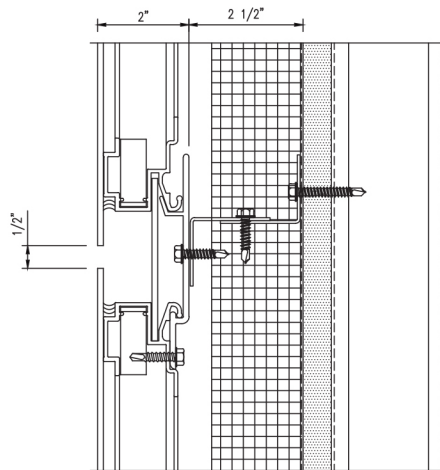


DETAILS

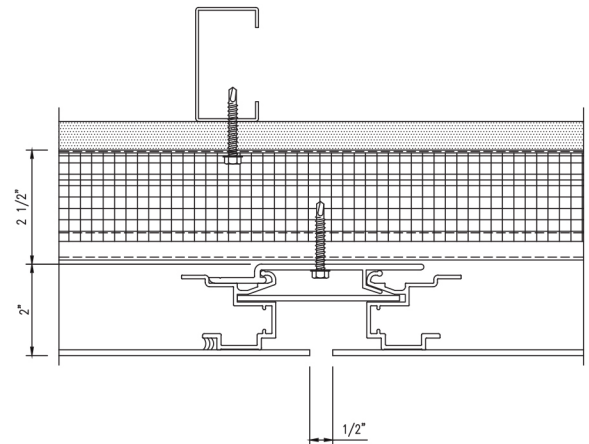
- Manufactured from solid aluminum or stainless plate with extruded aluminum framing
- Spline design method is achieved using a locking clip, which can be engaged at any point along the panel frame. Panel joints receive a mating spline that conceals the anchor clips and allows for multidirectional panel installation.
- Concealed panel frame is offset from the face plate to provide a starker panel edge. The panel frame is typically a mill finish, but can be provided in matching or contrasting paint finishes, or anodized for superior protection against corrosion or degradation.
- High resistance to denting and puncturing, ideal for high-traffic or abusive areas
- Mitered aluminum extrusion corners
- 0.5" (12.7 mm) standard horizontal and vertical joint with variable options
- Integrated knife plate reveals
- Floating plate appearance with deep perimeter reveals
- Adjustable furring to address variable construction tolerances and ensuring vertical sealing to air and water barrier, minimizing shims
- Non-combustible: minimal smoke or fuel contribution
- Avoids NFPA 285 complications by not using thermo-plastic cores
- All panel systems are reinforced/stiffened to resist deflection limits
- Multidirectional panel installation options
- Concealed fasteners but panels can be individually removed
- Aluminum: post-applied finishing for longterm performance and uniform aesthetic
- As rainscreen systems rely on gravity to drain water, all skyward facing surfaces, copings, sloped conditions and all perimeters must be sealed
- 100% recyclable with high percentage of post-consumer and industrial content, which may contribute to LEED credits
- Seamless integration with other Metalwërks wall systems



HORIZONTAL JOINT



VERTICAL JOINT



DESIGN OPTIONS

- Panels may be flat or curved
- Variable reveals: Horizontal 0.25"-4" (6.35 mm-101.6 mm) and Vertical 0.25"-6" (6.35 mm-152.4 mm). Consult Metalwërks for Arcwall joint options.
- Available with appliqué or perforated face skins
- Virtually unlimited color options for aluminum plate
- Options for #4, #6, #8, and non-directional finishes for stainless steel plate
- Matching perforated and louvered panels
- Projecting eyebrows with integrated framing can be included
- Enclosures for exposed columns, beams or pilaster features can be clad using materials and joint treatments to achieve matching aesthetics
- Ideal for flat, curved, sloped or vertical walls and soffits where the design intent is for pronounced reveals between the panel units and extremely sharp panel edges

METAL SUBSTRATE AND FINISH OPTIONS

ALUMINUM

3003-H14 aluminum alloy-temper

Thickness: 0.125" (3.18 mm) standard, 0.188" (4.78 mm), 0.25" (6.35 mm) options

Finishes: Kynar® or architectural TGIC Polyester powder coating

STAINLESS STEEL

T304 or T316 for enhanced corrosion resistance

Thickness: 11 gauge (0.125") (3.18 mm) standard, 8 gauge (0.172") (4.37 mm), 7 gauge (0.188") (4.78 mm) options

Finishes: #4, #6, #8, and non-directional satin in smooth

PANEL SIZES

Widths: 12" (305 mm) to 72" (1,829 mm)*

Lengths: 12" (305 mm) to 240" (6,096 mm)*

Depth: 2" (50.8 mm) ('Spline')

* Maximum panel size depends upon plate material, gauge, finish, and geometry

PANEL WEIGHT RANGE

(dependent upon gauge and geometry)

Aluminum: 2.62 - 4.42 lbs./ft²

Stainless Steel: 4 lbs./ft²

Ranges provided for clarification. Consult with Metalwërks for further options

ACCESSORIES

Flashing: Formed aluminum or stainless steel sheet metal as required for base or penetration conditions produced from matching material/finish as panels

Coping: May be produced with the same material as the wall panel system

Furring Channels: As required for proper mounting of panels

Perforated Panels and Louvered Vents: For accents, screening or ventilation. Consult with Metalwërks for options.

Fasteners: Type 304 stainless steel or cadmium-plated as recommended

Shims: High impact thermally-broken plastic shims to maintain co-planar surfaces

WARRANTY

Material & Workmanship: 1-year standard, with 2- or 5-year options

Finish Integrity: 10-year standard up to 20-year

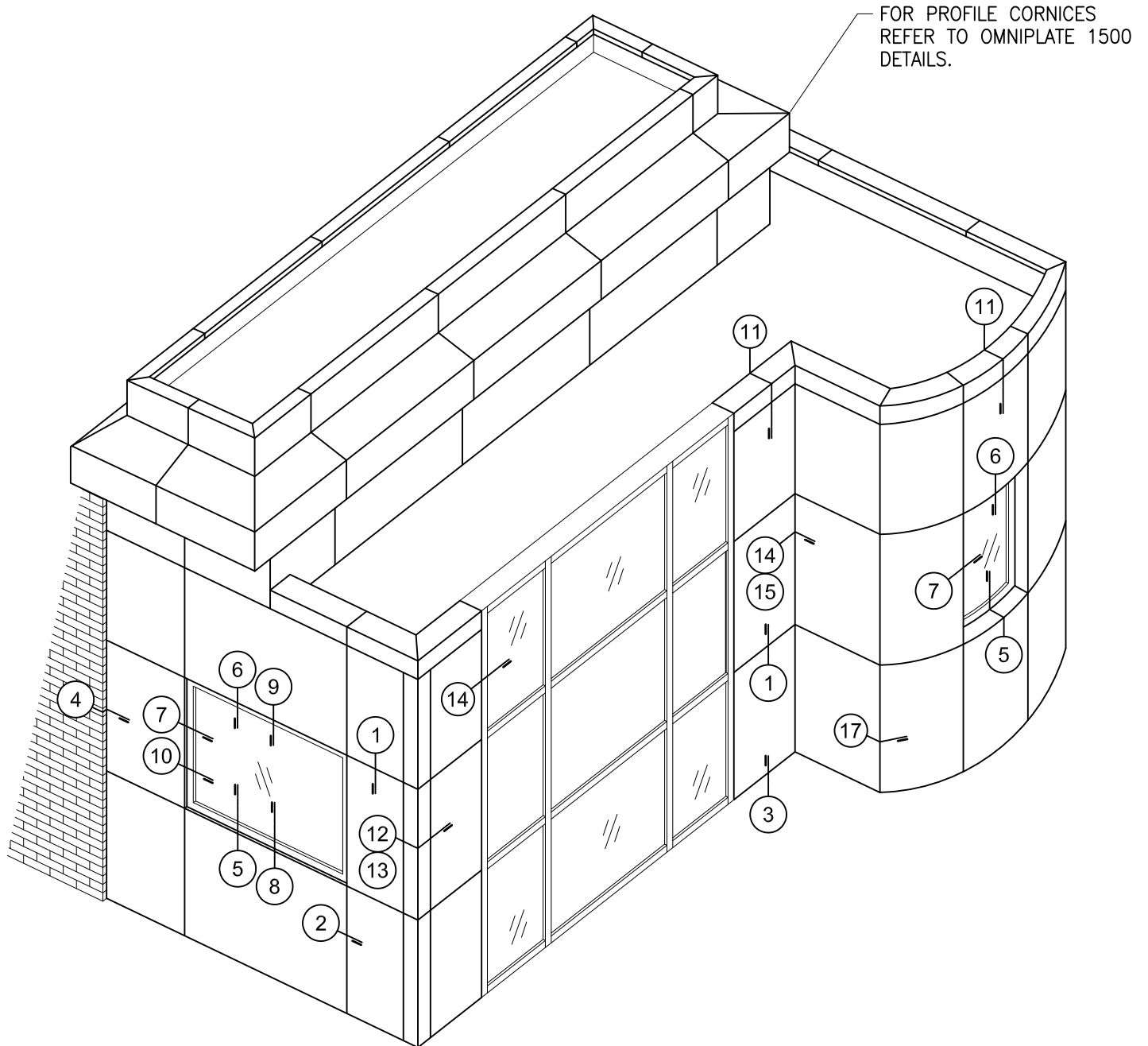
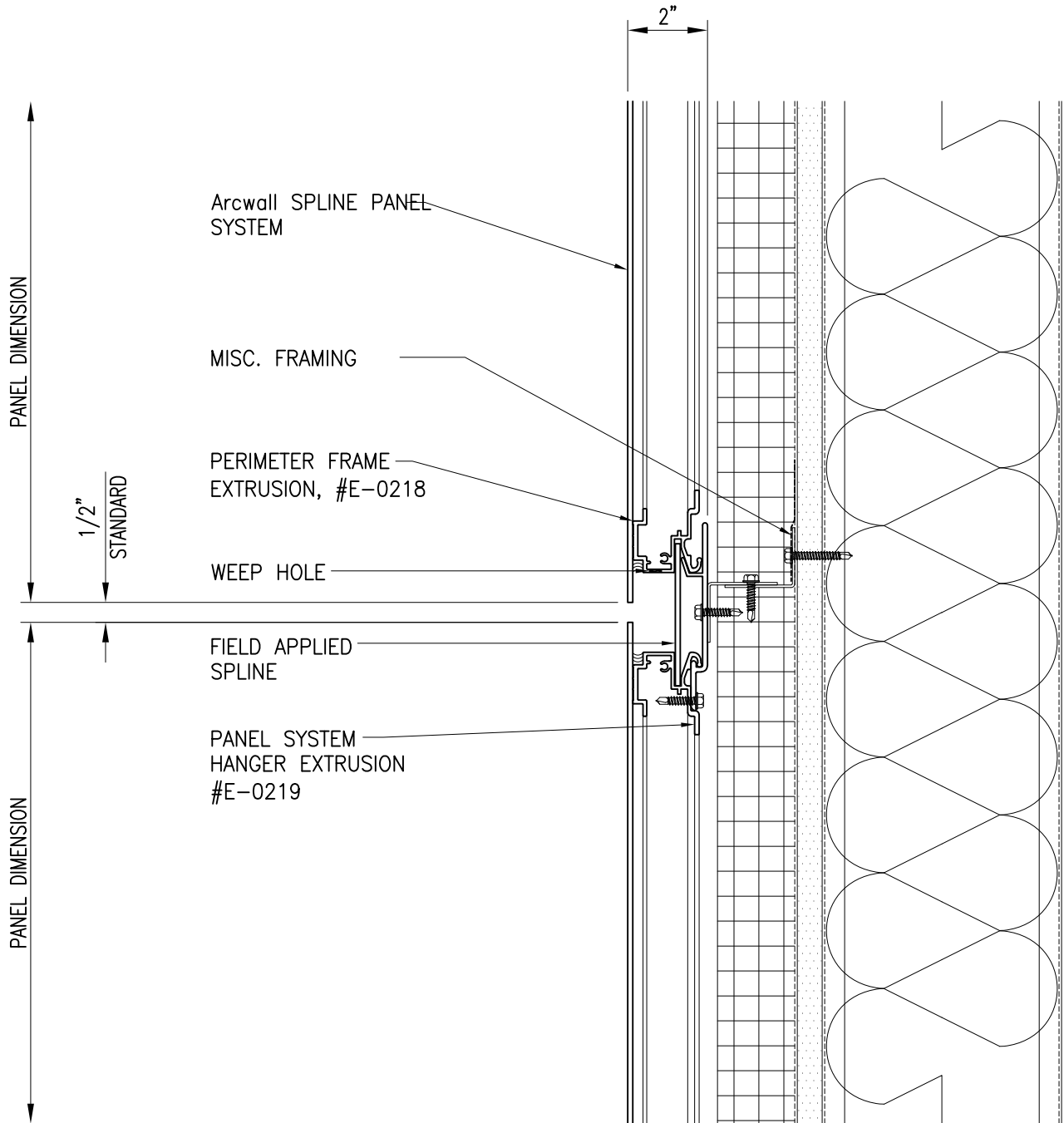


Table of Contents:

DETAIL DESCRIPTION

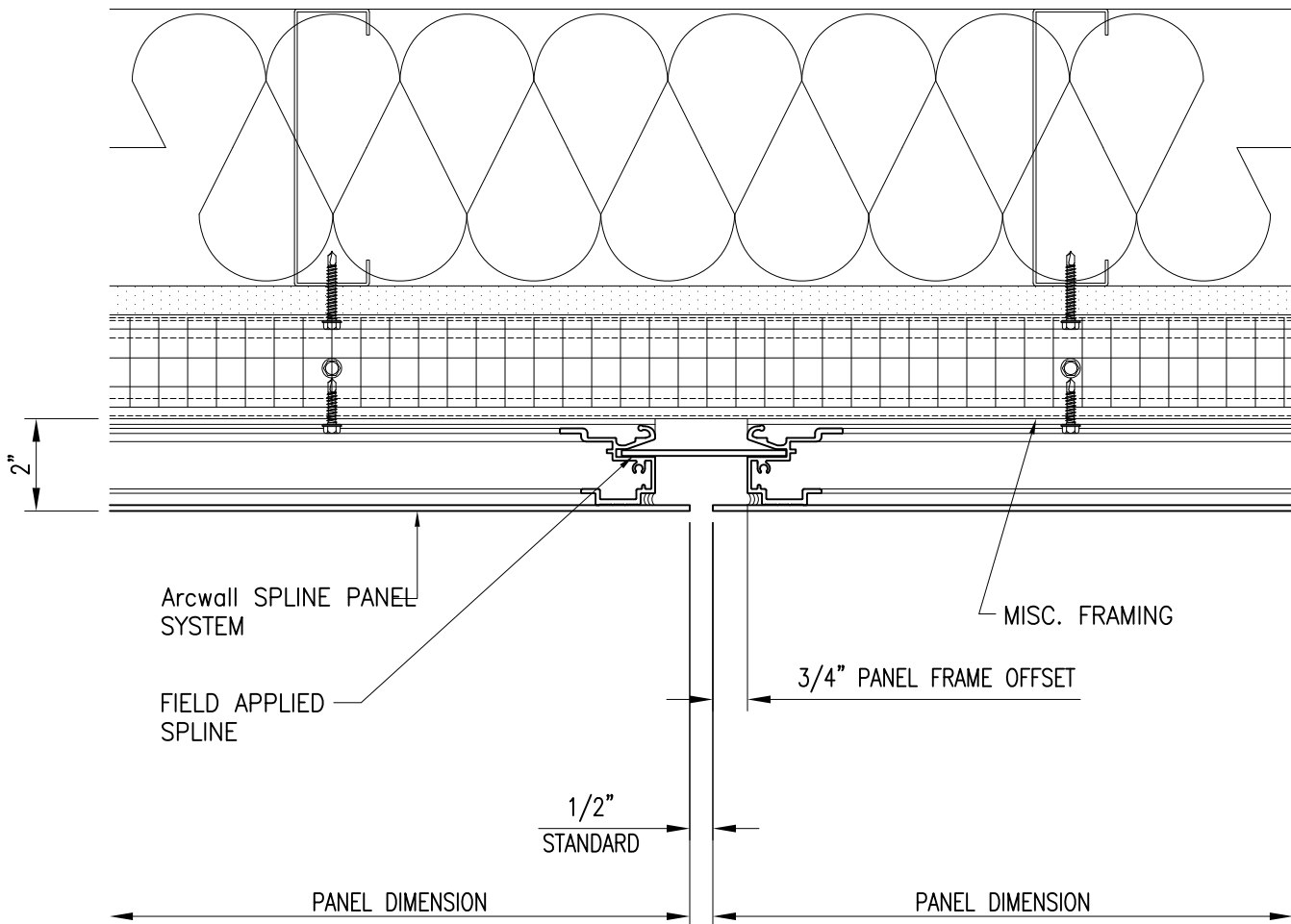
- 1 Horizontal Joint
- 2 Vertical Joint
- 3 Panel Sill
- 4 Panel Jamb
- 5 Storefront Sill
- 6 Storefront Head
- 7 Storefront Jamb
- 8 Curtain Wall Sill
- 9 Curtain Wall Head
- 10 Curtain Wall Jamb
- 11 Coping
- 12 Standard Outside Corner
- 13 Optional Outside Corner
- 14 Standard Inside Corner
- 15 Optional Inside Corner

PRIMARY WALL CONSTRUCTION AND INSULATION NOT BY METALWERKS. 16 GAUGE METAL STUDS MINIMUM REQUIRED



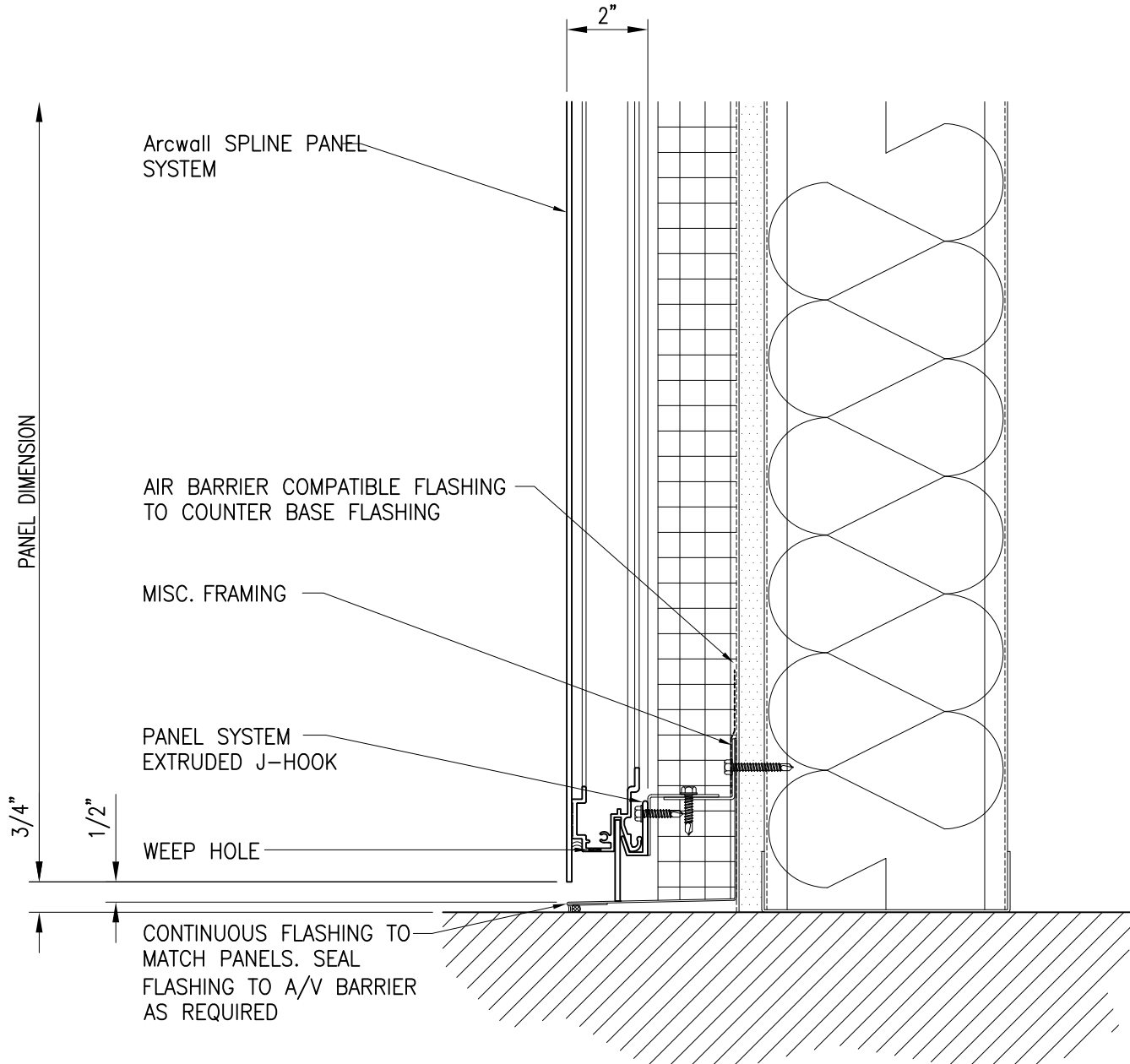
1) Horizontal Joint

PRIMARY WALL CONSTRUCTION AND INSULATION NOT BY METALWERKS. 16 GAUGE METAL STUDS MINIMUM REQUIRED



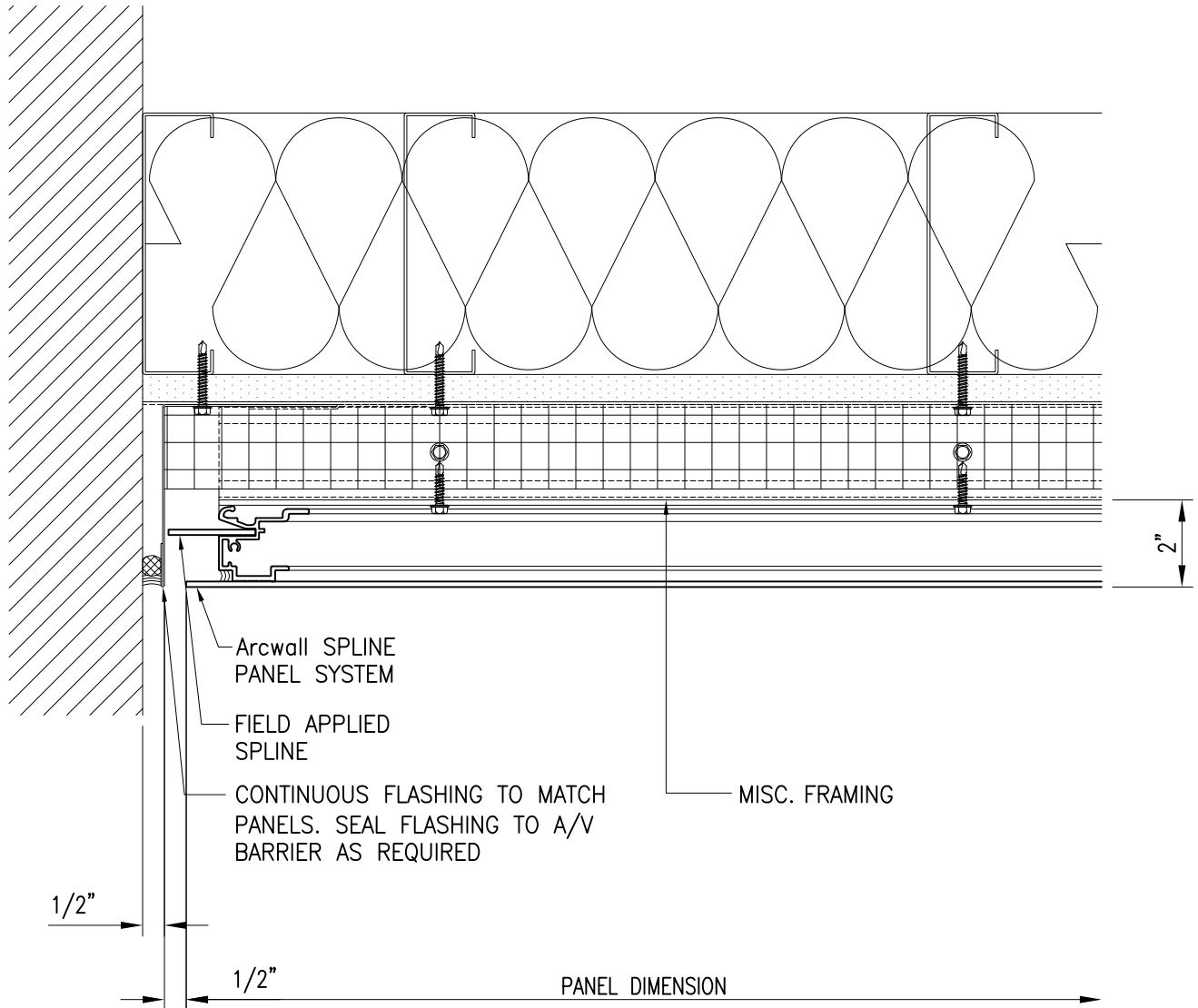
2) Vertical Joint

PRIMARY WALL CONSTRUCTION AND INSULATION NOT BY METALWERKS. 16 GAUGE METAL STUDS MINIMUM REQUIRED



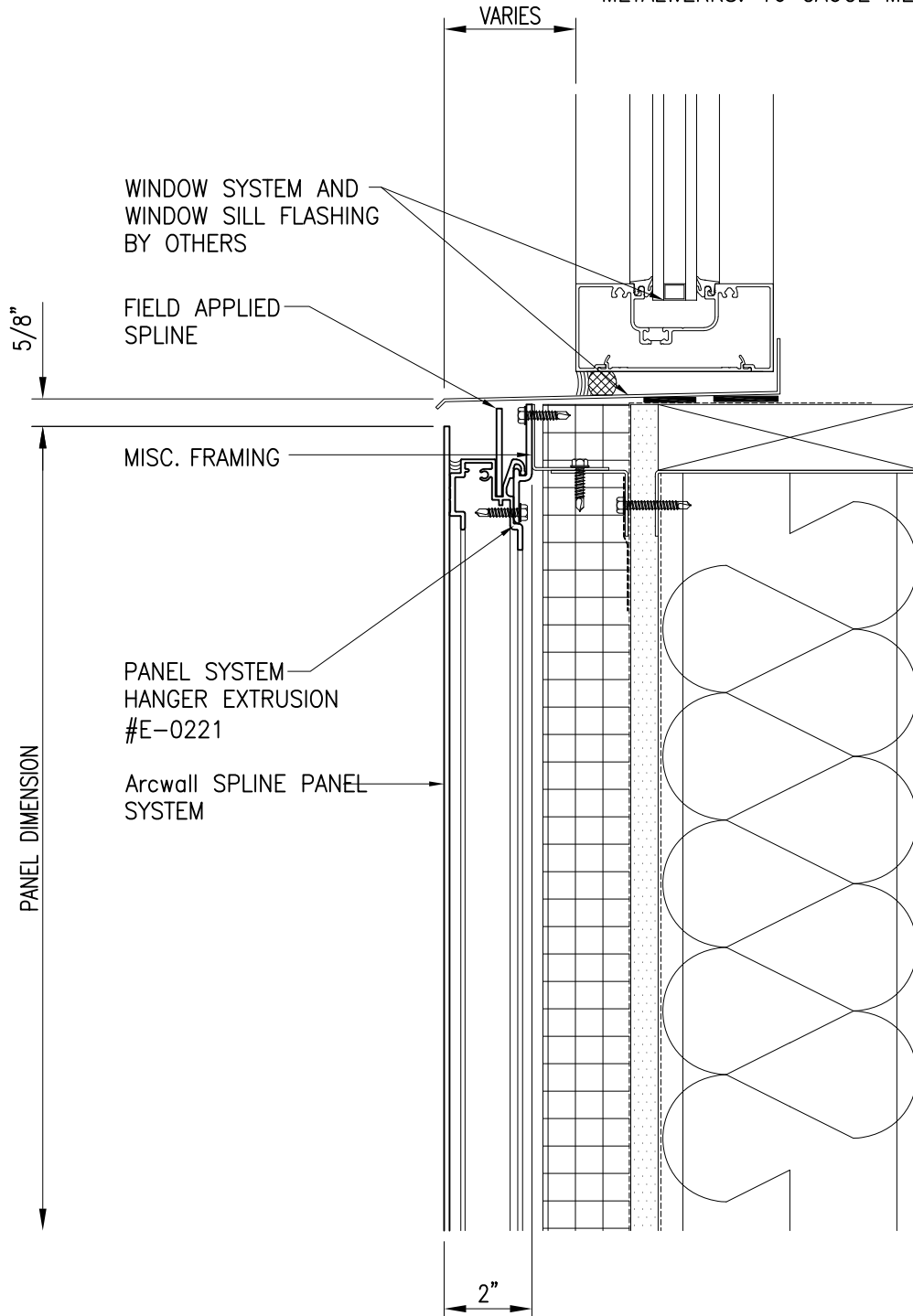
3) Panel Sill

PRIMARY WALL CONSTRUCTION AND INSULATION NOT BY METALWERKS. 16 GAUGE METAL STUDS MINIMUM REQUIRED



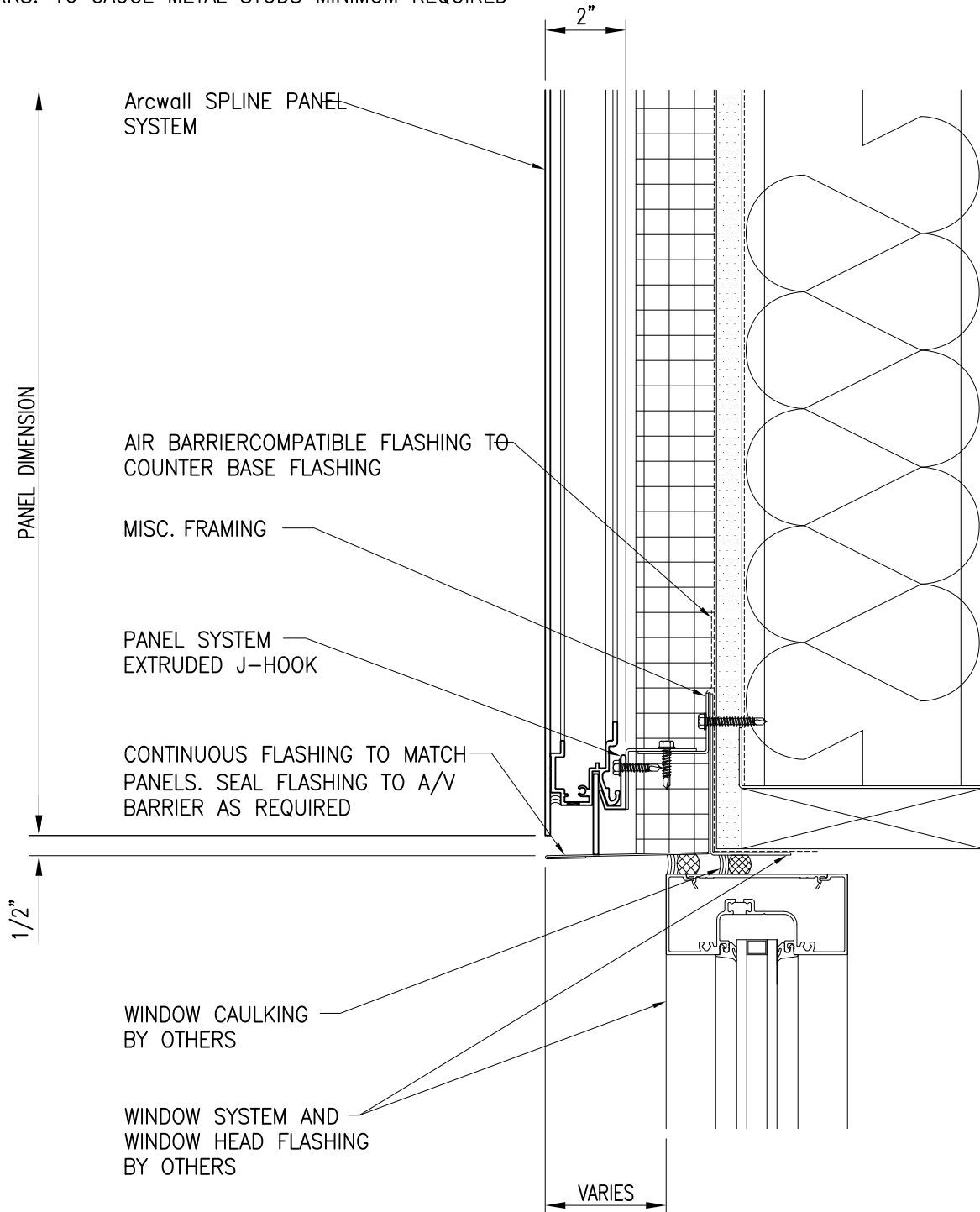
4) Panel Jamb

PRIMARY WALL CONSTRUCTION AND INSULATION NOT BY METALWERKS. 16 GAUGE METAL STUDS MINIMUM REQUIRED



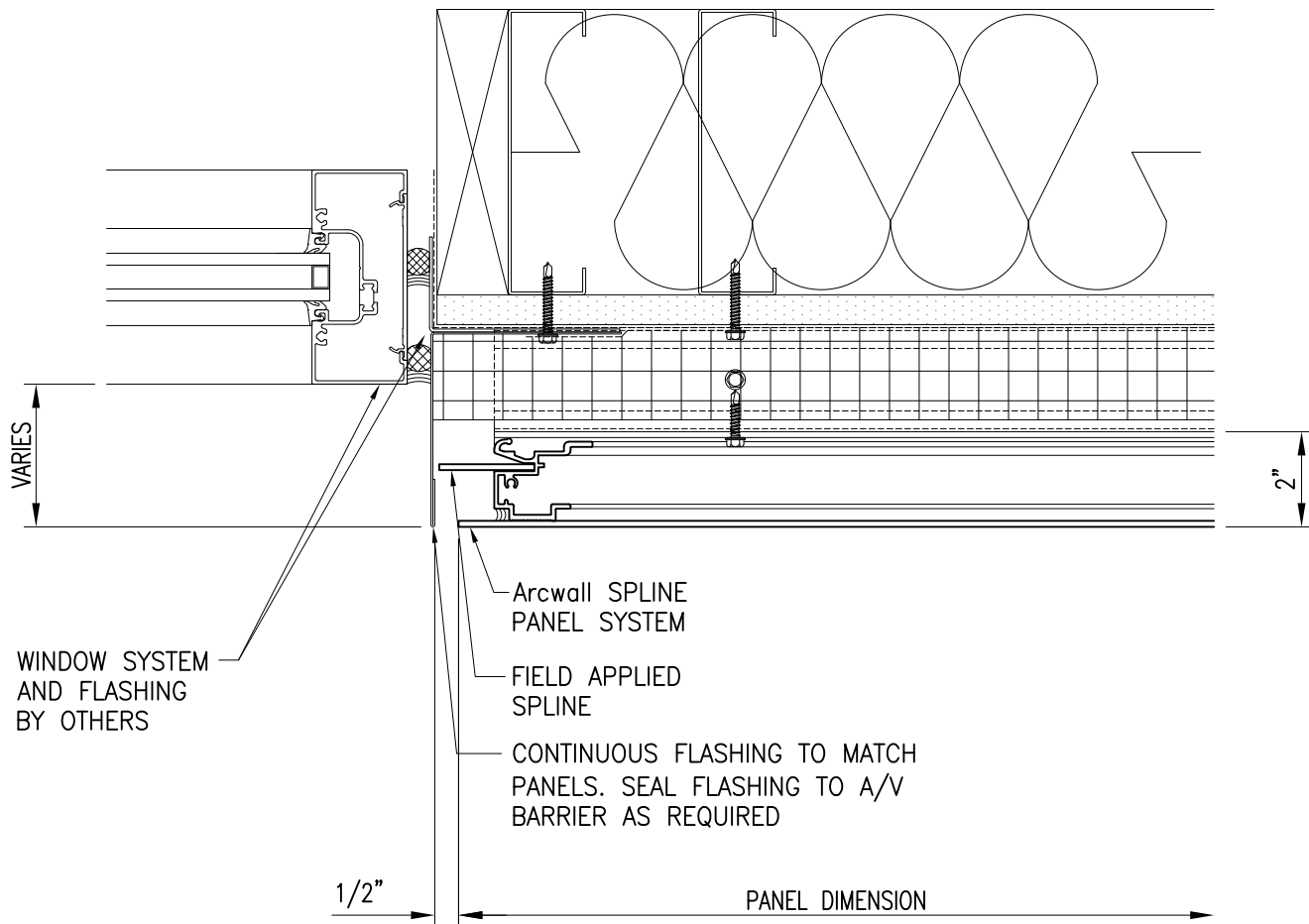
5) Storefront Sill

PRIMARY WALL CONSTRUCTION AND INSULATION NOT BY METALWERKS. 16 GAUGE METAL STUDS MINIMUM REQUIRED

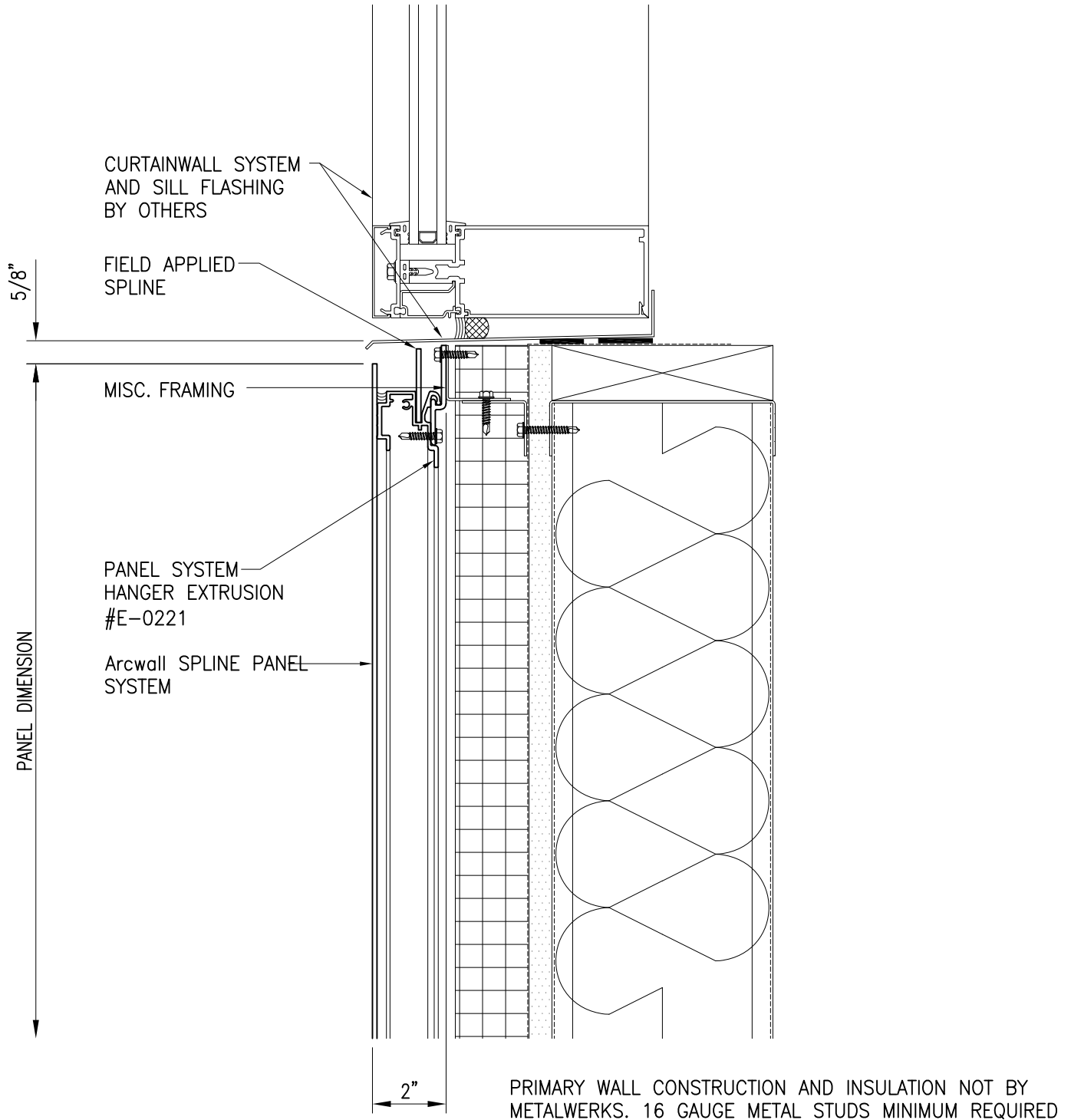


6) Storefront Head

PRIMARY WALL CONSTRUCTION AND INSULATION NOT BY METALWERKS. 16 GAUGE METAL STUDS MINIMUM REQUIRED

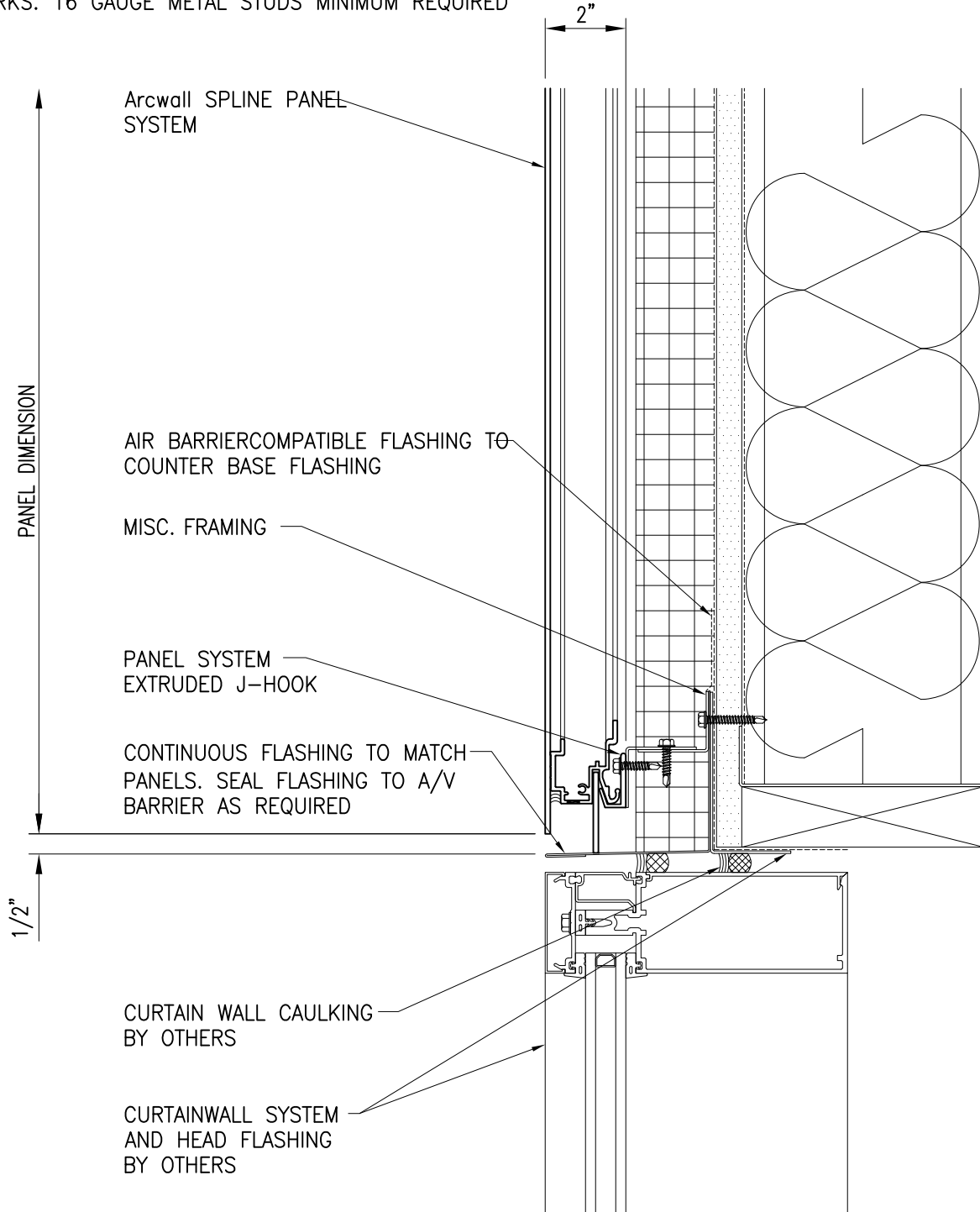


7) Storefront Jamb



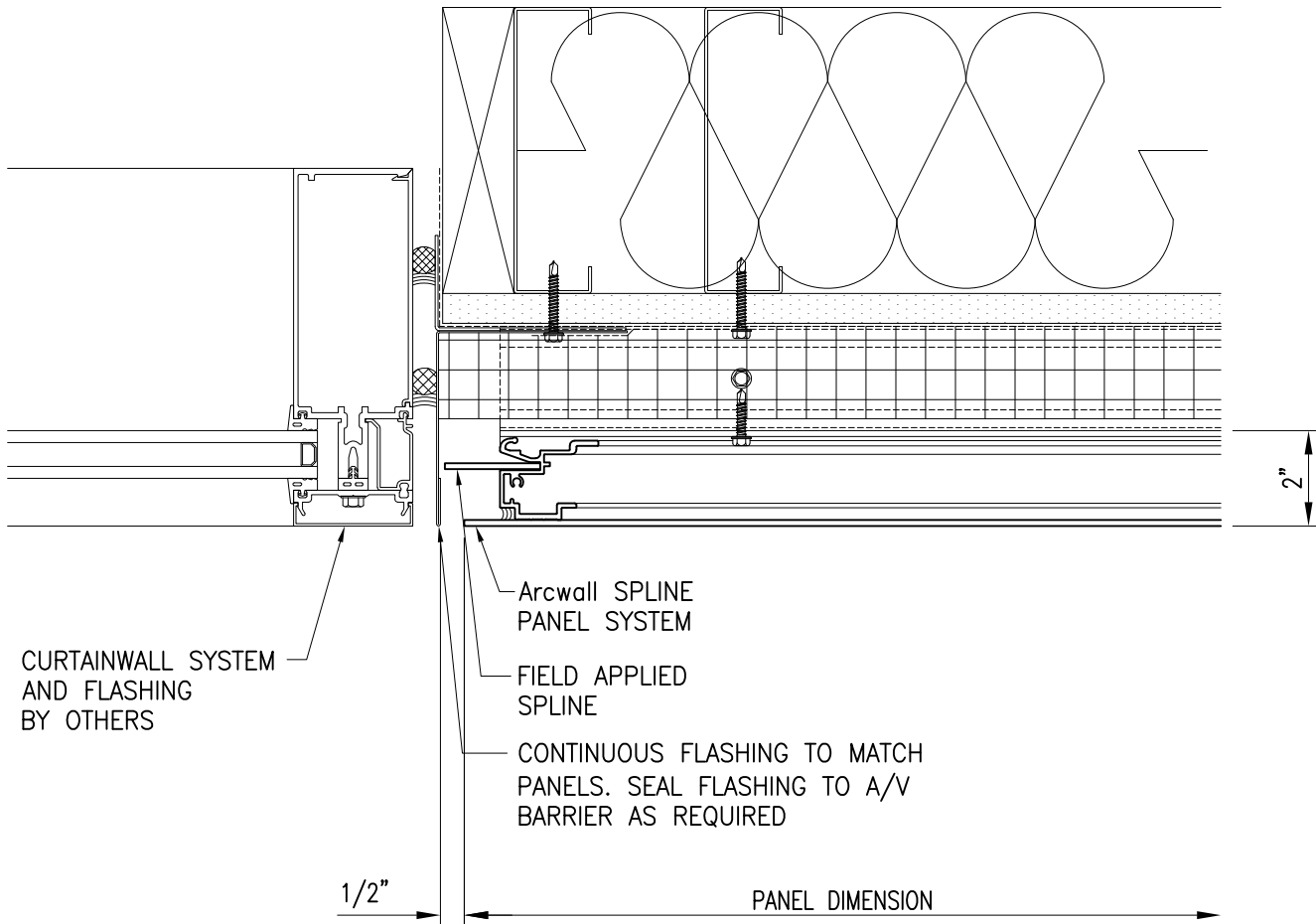
8) Curtain Wall Sill

PRIMARY WALL CONSTRUCTION AND INSULATION NOT BY METALWERKS. 16 GAUGE METAL STUDS MINIMUM REQUIRED

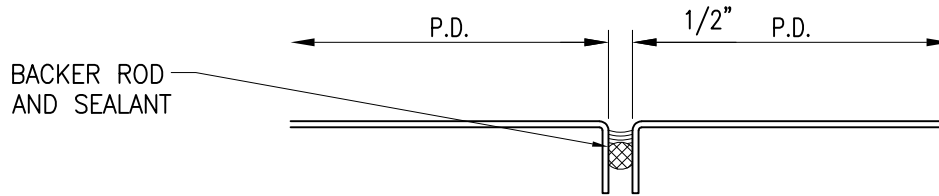


9) Curtain Wall Head

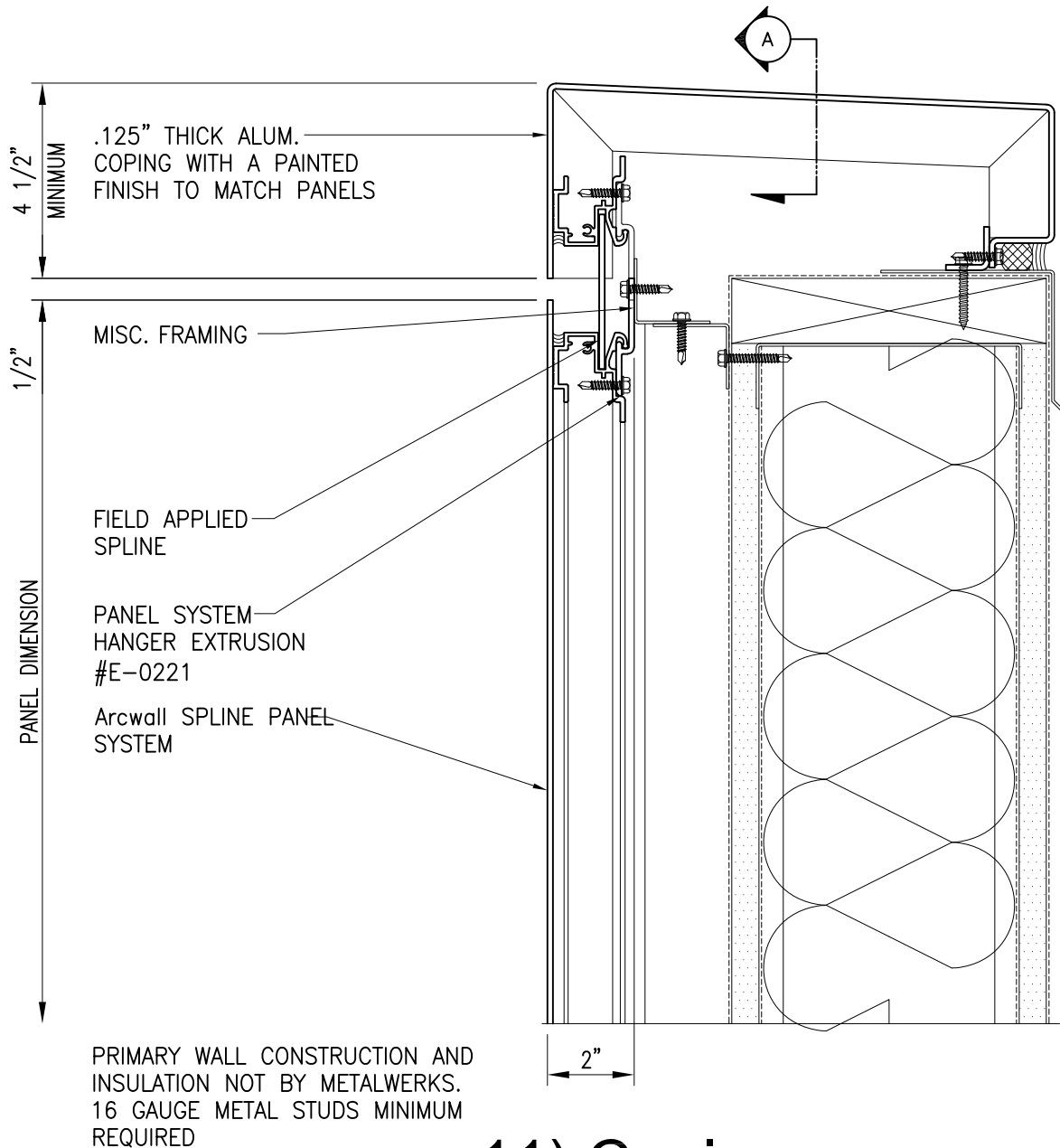
PRIMARY WALL CONSTRUCTION AND INSULATION NOT BY METALWERKS. 16 GAUGE METAL STUDS MINIMUM REQUIRED



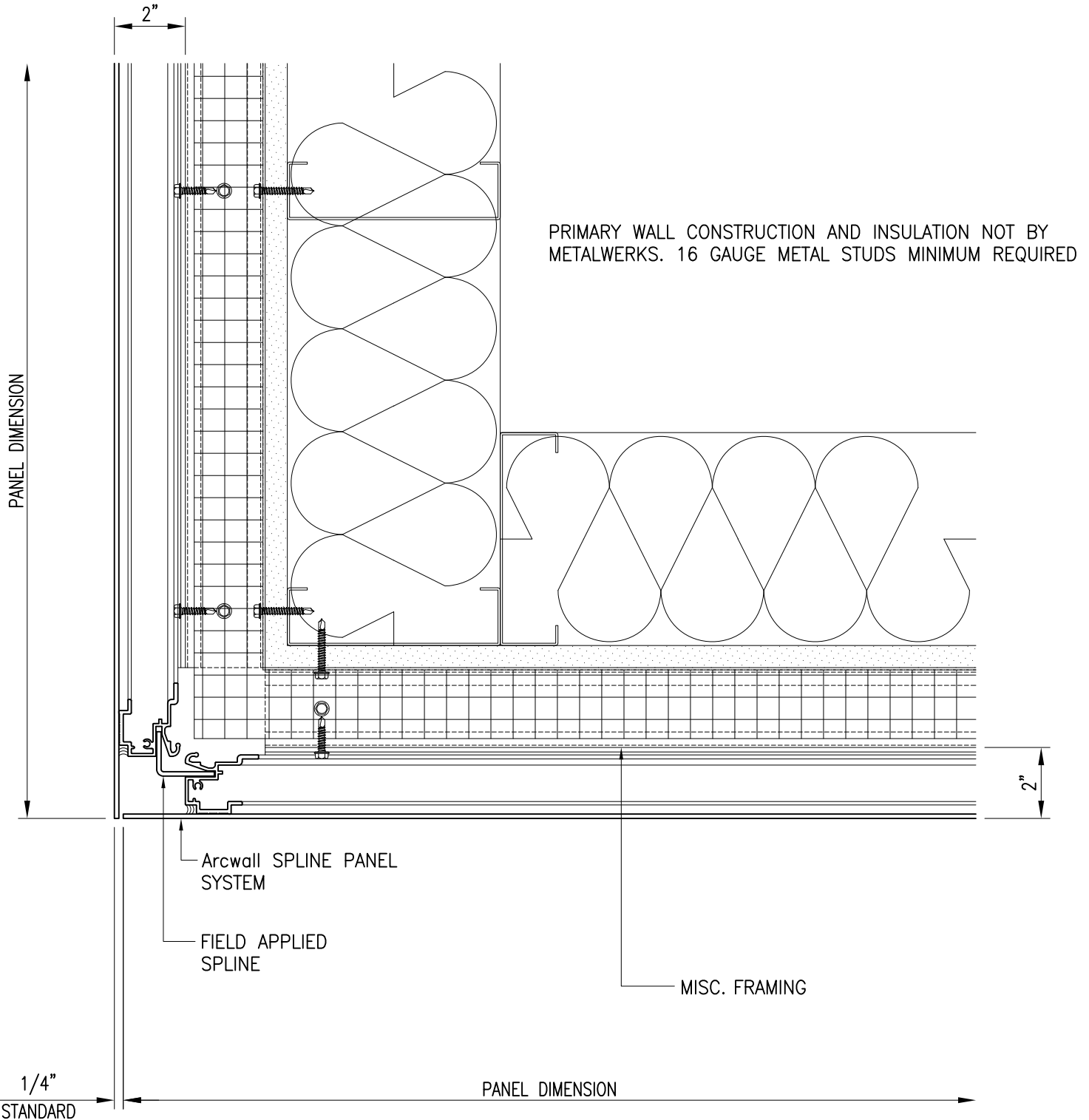
10) Curtain Wall Jamb



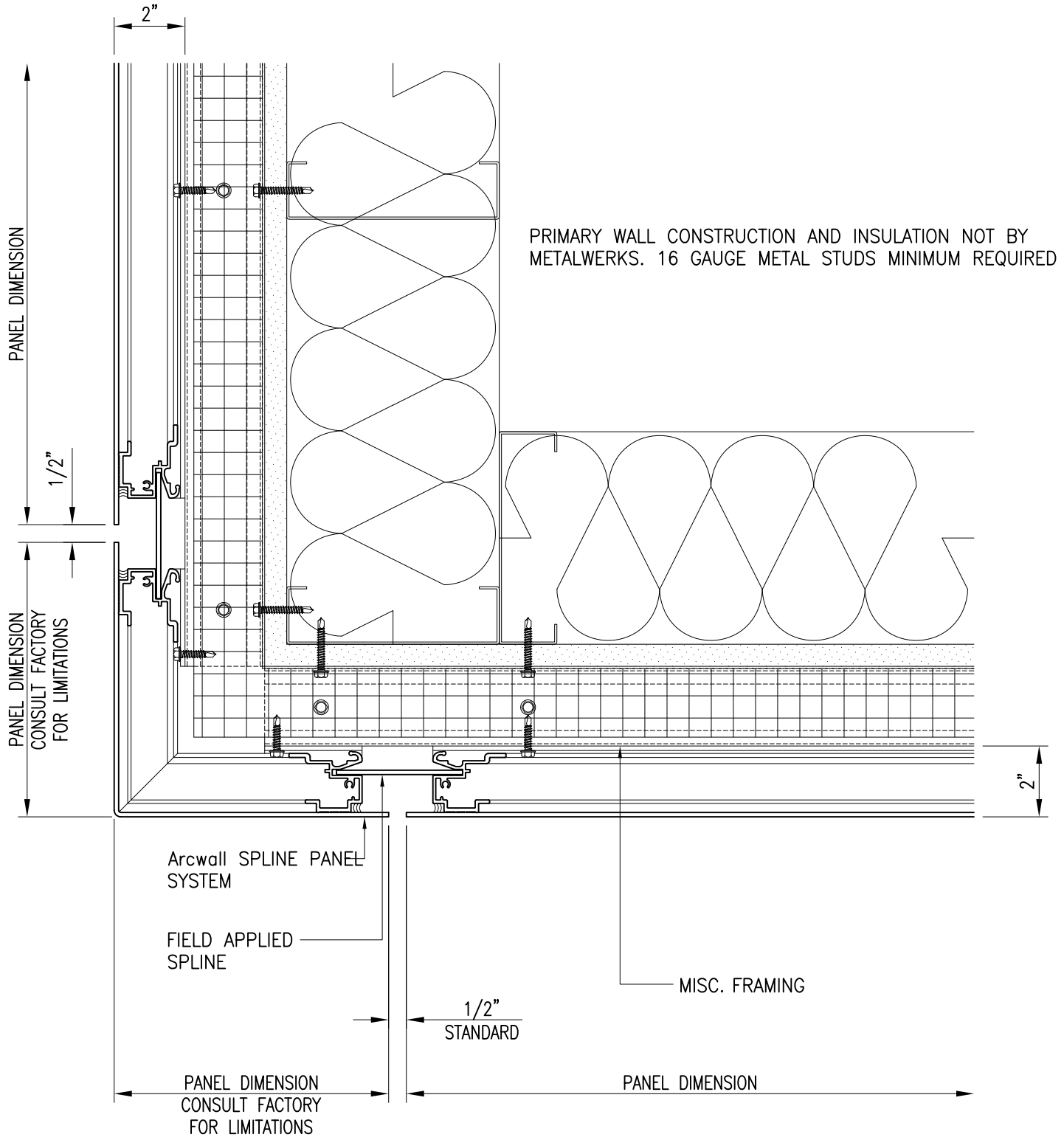
Section 'A' - Standard Coping Caulk Joint



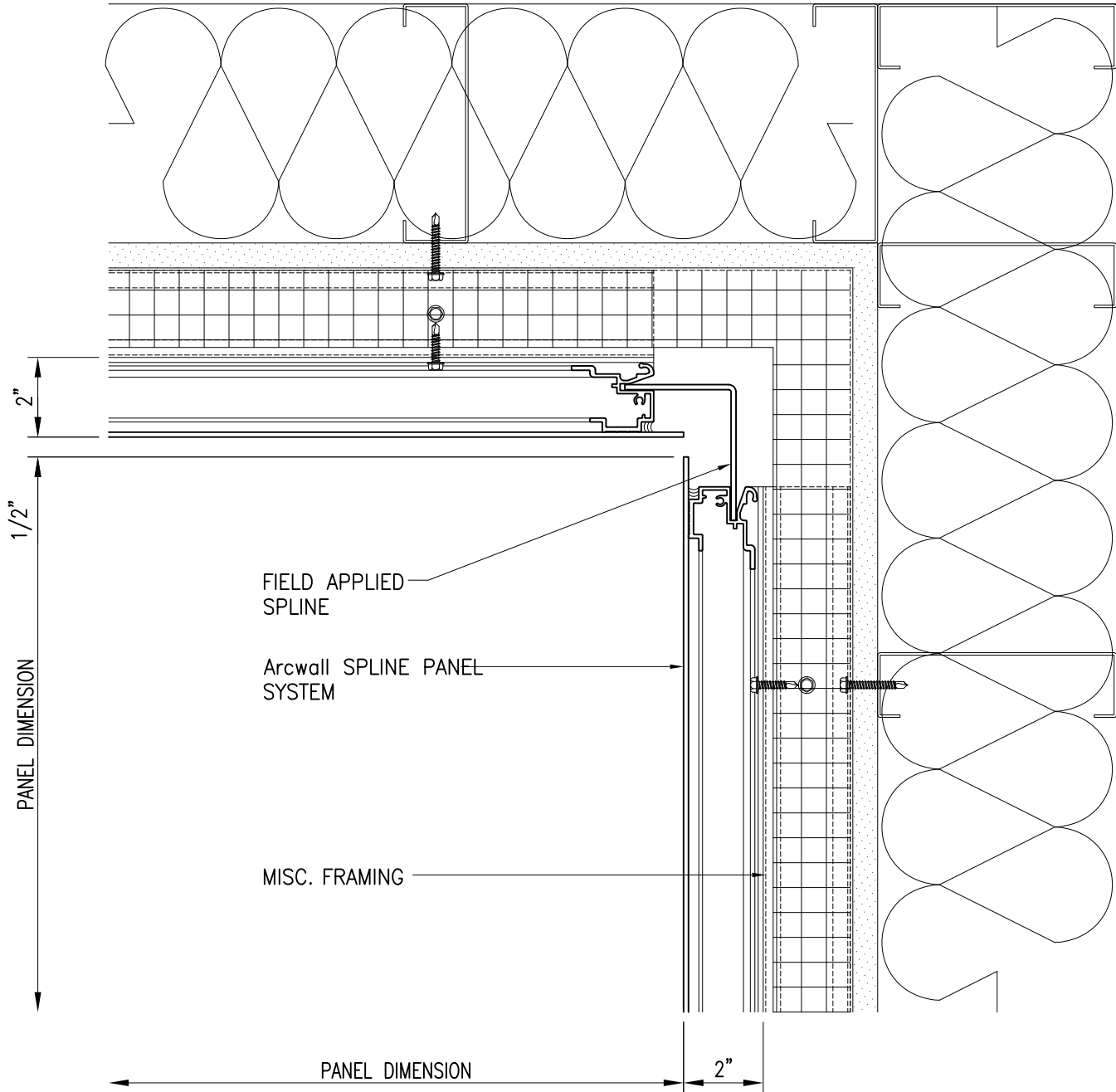
11) Coping



12) Standard Outside Corner

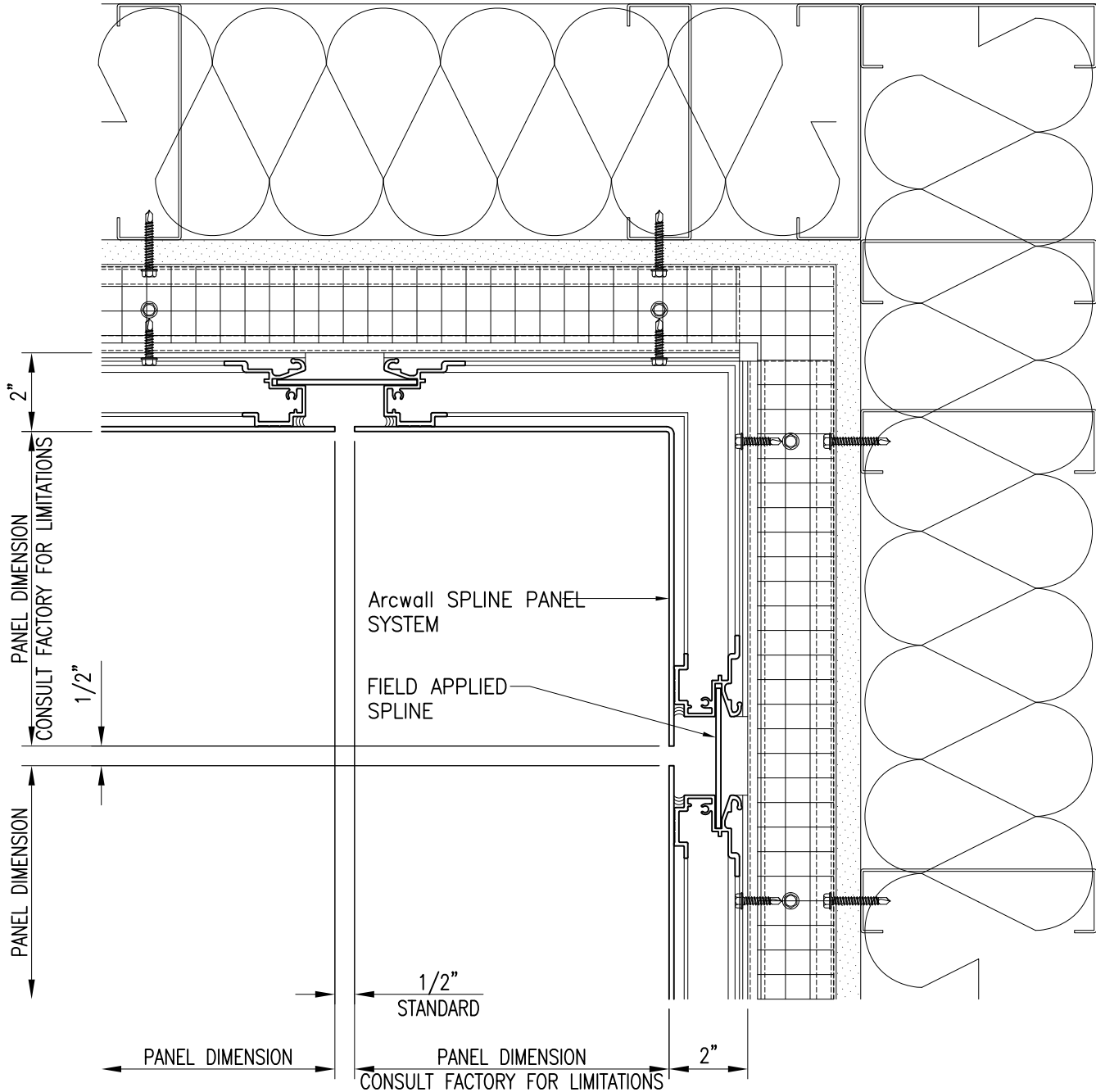


13) Optional Outside Corner



PRIMARY WALL CONSTRUCTION AND INSULATION NOT BY METALWERKS. 16 GAUGE METAL STUDS MINIMUM REQUIRED

14) Standard Inside Corner



PRIMARY WALL CONSTRUCTION AND INSULATION NOT BY METALWERKS. 16 GAUGE METAL STUDS MINIMUM REQUIRED

15) Optional Inside Corner