

A modern, multi-story building with a curved facade. The left side features a large glass curtain wall revealing an interior staircase. The rest of the building is clad in light-colored metal panels with horizontal window bands. The sky is blue with scattered white clouds.

ARCHITECTURAL RAINSCREEN WALL SYSTEMS

The logo for Metalwërks, featuring a stylized graphic of a building facade with vertical lines of varying heights, resembling a staircase or a modern architectural element.

Metalwërks[®]

Arcwall is an economical drained and back-ventilated rainscreen system for both walls and soffits manufactured from formed aluminum or stainless plate. The system combines excellent performance with a high design flexibility.

Arcwall panels can be flat, curved, or formed into custom 3D profiles and can be installed both horizontally and vertically. Horizontal reveals are also available in varying heights from 5/8" to 2".

The system is entirely dry-set with integrally formed interlocking longitudinal joints and simplified backup guttering. This includes formed panels with welded corners and factory-mounted j-hook extrusions for male-female engagement.

Arcwall may be installed over stud/sheathed walls, continuous masonry, concrete, or as the outer cladding in a wall assembly that incorporates continuous insulation and a suitable air and water barrier.



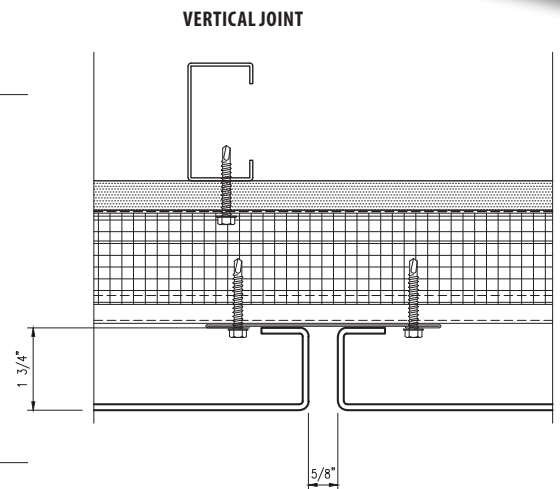
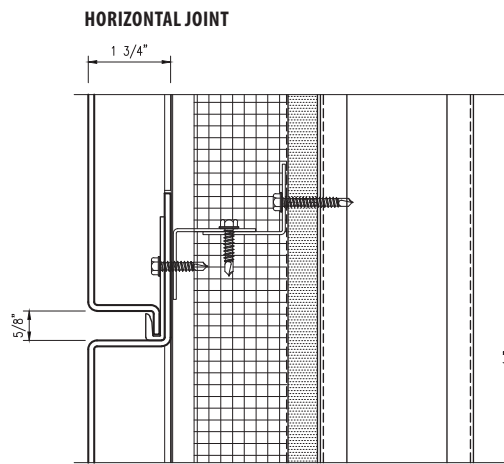
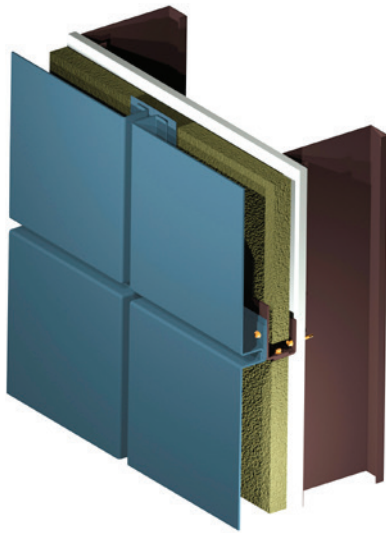
DETAILS

- Manufactured from solid aluminum or stainless plate with integral panel returns formed from a single piece of metal
- Solid aluminum and stainless steel: high resistance to denting and puncturing, ideal for high-traffic or abusive areas
- Fully mitered and welded corners ground smooth for seamless appearance
- 0.625" (15.88 mm) standard horizontal and vertical joint with variable options
- Adjustable furring to address variable construction tolerances and ensuring vertical sealing to air and water barrier, minimizing shims
- Non-Combustible: minimal smoke or fuel contribution
- Avoids NFPA 285 complications by avoiding thermo-plastic cores
- All panel systems are reinforced/stiffened to resist deflection limits
- Vertical gutters channel water from horizontal gutters draining moisture to the exterior
- Panels install both horizontally and vertically
- Concealed fastened using corrosion-resistant self-tapping screws
- Aluminum: post-applied finishing for long-term performance and uniform aesthetic

- As rainscreen systems rely on gravity to drain water, all skyward facing surfaces, copings, sloped conditions and all perimeters must be sealed
- 100% recyclable with high percentage of post-consumer and industrial content, which may contribute to LEED credits

DESIGN OPTIONS

- Panels may be flat, curved, or custom 3D profiles
- Variable reveals: Horizontal 0.625" - 2" (15.88 mm - 50.8 mm); Vertical 0.25" - 2" (6.35 mm - 50.8 mm)
- Unlimited color options for aluminum plate
- Options for #4, #6, #8, and non-directional finishes for stainless plate
- Matching perforated and louvered panels
- Projecting eyebrows with integrated framing can be included
- Available shop-applied appliqués for accents
- May also be used for soffits, column, beam and pilaster cladding
- **Optional back-cuts on formed panel edges for a sharper bend and crisper appearance**



METAL SUBSTRATE AND FINISH OPTIONS

ALUMINUM

3003-H14 aluminum alloy-temper

Thickness: 0.125" (3.18 mm) standard and 0.188" (4.78 mm) option

Finishes: Kynar®, architectural TGIC Polyester powder coating, or anodized

STAINLESS STEEL

T304 or T316

Thickness: 14 gauge (0.078") (1.98 mm) standard, 16 gauge (0.063") (1.60 mm), 12 gauge (0.109") (2.78 mm) options

Finishes: #4, #6, #8, and non-directional satin in smooth or custom embossed patterns

PANEL SIZES

Widths: 12" (305 mm) to 65" (1,651 mm)*

Lengths: 12" (305 mm) to 160" (4,064 mm)*

Depth: 1.75" (44.45 mm) minimum

* Maximum panel size depends upon plate material, gauge, finish, and geometry

PANEL WEIGHT RANGE

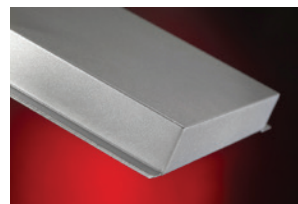
(dependent upon gauge and geometry)

Aluminum: 2.62 - 3.52 lbs./ft²

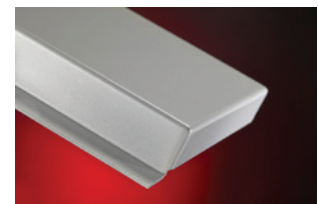
Stainless Steel: 4.64 - 5.913 lbs./ft²

Ranges provided for clarification. Consult with Metalwërks for further options.

SHARP CORNER



STANDARD CORNER



ACCESSORIES

Flashing: 0.040" (1.02 mm) thick to 0.063" (1.60 mm) aluminum

Coping: Wall copings may be produced with the same material as the wall panel system

Furring Channels: As required for proper mounting of panels

Fasteners: Type 304 stainless steel or cadmium-plated as recommended

Shims: High impact thermally-broken plastic shims to maintain co-planar surfaces

WARRANTY

Material & Workmanship: 1-year standard, with 2- or 5-year options

Finish Integrity: 10-year standard and up to 20-year for coated aluminum

Efficiency and fascinating free-floating effects are hallmarks of Metalwërks Arcwall™ Spline wall system. With Arcwall Spline, the cut edges of the face plate material are the panels' edges, a capability in metal you can only achieve with plate.

Arcwall Spline features concealed extruded aluminum frames with matching or contrasting joint fillers, or "Splines," in variable sizes, resulting in a wide range of pattern options. The frame's universal design allows for more flexibility in unique geometry situations, such as Portals or Canopy applications.

The fabrication efficiency of Arcwall Spline, combined with Metalwërks simplified panel attachment options that speed installation, make for a highly competitive, high-end rainscreen wall system. Arcwall Spline panels are factory assembled with a flat plate facing structurally adhered to an extruded aluminum panel frame and may be flat or curved.

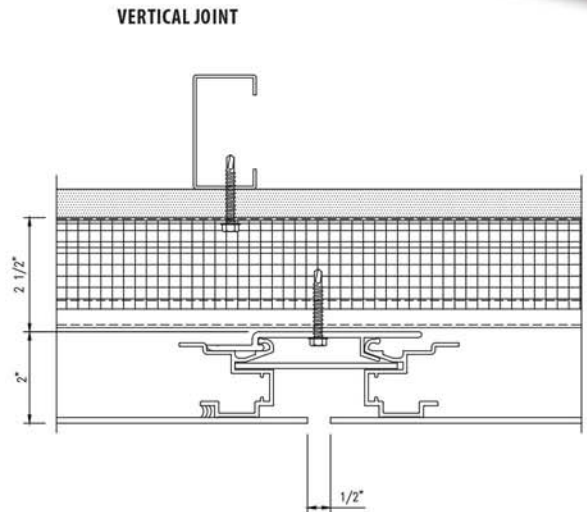
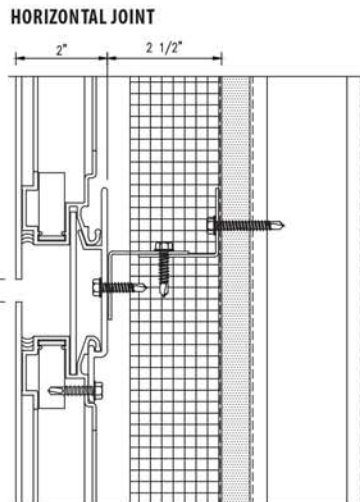
Two-dimensional geometries of panel facings are virtually limitless and panels may be installed in any direction vertical, horizontal or sloped orientations. Joint sizes can be variable and reveals can use a complementary or contrasting finish. Or, bent edges can be incorporated at panel corners for softer treatment.

All Arcwall systems install with concealed fasteners over continuous masonry, concrete, or as the outer cladding in a wall assembly that incorporates continuous insulation and a suitable air and water barrier. Solid metal panels are particularly useful where metal panels are used in high-traffic areas due to superior impact performance compared to other composite metal panel cladding products.



DETAILS

- Manufactured from solid aluminum or stainless plate with extruded aluminum framing
- Spline design method is achieved using a locking clip, which can be engaged at any point along the panel frame. Panel joints receive a mating spline that conceals the anchor clips and allows for multidirectional panel installation.
- Concealed panel frame is offset from the face plate to provide a starker panel edge. The panel frame is typically a mill finish, but can be provided in matching or contrasting paint finishes, or anodized for superior protection against corrosion or degradation.
- High resistance to denting and puncturing, ideal for high-traffic or abusive areas
- Mitered aluminum extrusion corners
- 0.5" (12.7 mm) standard horizontal and vertical joint with variable options
- Integrated knife plate reveals
- Floating plate appearance with deep perimeter reveals
- Adjustable furring to address variable construction tolerances and ensuring vertical sealing to air and water barrier, minimizing shims
- Non-combustible: minimal smoke or fuel contribution
- Avoids NFPA 285 complications by not using thermo-plastic cores
- All panel systems are reinforced/stiffened to resist deflection limits
- Multidirectional panel installation options
- Concealed fasteners but panels can be individually removed
- Aluminum: post-applied finishing for longterm performance and uniform aesthetic
- As rainscreen systems rely on gravity to drain water, all skyward facing surfaces, copings, sloped conditions and all perimeters must be sealed
- 100% recyclable with high percentage of post-consumer and industrial content, which may contribute to LEED credits
- Seamless integration with other Metalwërks wall systems



DESIGN OPTIONS

- Panels may be flat or curved
- Variable reveals: Horizontal 0.25"-4" (6.35 mm-101.6 mm) and Vertical 0.25"-6" (6.35 mm-152.4 mm). Consult Metalwërks for Arcwall joint options.
- Available with appliqué or perforated face skins
- Virtually unlimited color options for aluminum plate
- Options for #4, #6, #8, and non-directional finishes for stainless steel plate
- Matching perforated and louvered panels
- Projecting eyebrows with integrated framing can be included
- Enclosures for exposed columns, beams or pilaster features can be clad using materials and joint treatments to achieve matching aesthetics
- Ideal for flat, curved, sloped or vertical walls and soffits where the design intent is for pronounced reveals between the panel units and extremely sharp panel edges

METAL SUBSTRATE AND FINISH OPTIONS

ALUMINUM

3003-H14 aluminum alloy-temper

Thickness: 0.125" (3.18 mm) standard, 0.188" (4.78 mm), 0.25" (6.35 mm) options

Finishes: Kynar® or architectural TGIC Polyester powder coating

STAINLESS STEEL

T304 or T316 for enhanced corrosion resistance

Thickness: 11 gauge (0.125") (3.18 mm) standard, 8 gauge (0.172") (4.37 mm), 7 gauge (0.188") (4.78 mm) options

Finishes: #4, #6, #8, and non-directional satin in smooth

PANEL SIZES

Widths: 12" (305 mm) to 72" (1,829 mm)*

Lengths: 12" (305 mm) to 240" (6,096 mm)*

Depth: 2" (50.8 mm) ('Spline')

* Maximum panel size depends upon plate material, gauge, finish, and geometry

PANEL WEIGHT RANGE

(dependent upon gauge and geometry)

Aluminum: 2.62 - 4.42 lbs./ft²

Stainless Steel: 4 lbs./ft²

Ranges provided for clarification. Consult with Metalwërks for further options

ACCESSORIES

Flashing: Formed aluminum or stainless steel sheet metal as required for base or penetration conditions produced from matching material/finish as panels

Coping: May be produced with the same material as the wall panel system

Furring Channels: As required for proper mounting of panels

Perforated Panels and Louvered Vents: For accents, screening or ventilation. Consult with Metalwërks for options.

Fasteners: Type 304 stainless steel or cadmium-plated as recommended

Shims: High impact thermally-broken plastic shims to maintain co-planar surfaces

WARRANTY

Material & Workmanship: 1-year standard, with 2- or 5-year options

Finish Integrity: 10-year standard up to 20-year

Efficiency and fascinating free-floating effects are hallmarks of Metalwërks Arcwall wall systems. With Arcwall Ship Lap, the cut edges of the face plate material are the panels' edges, a capability in metal you can only achieve with plate.

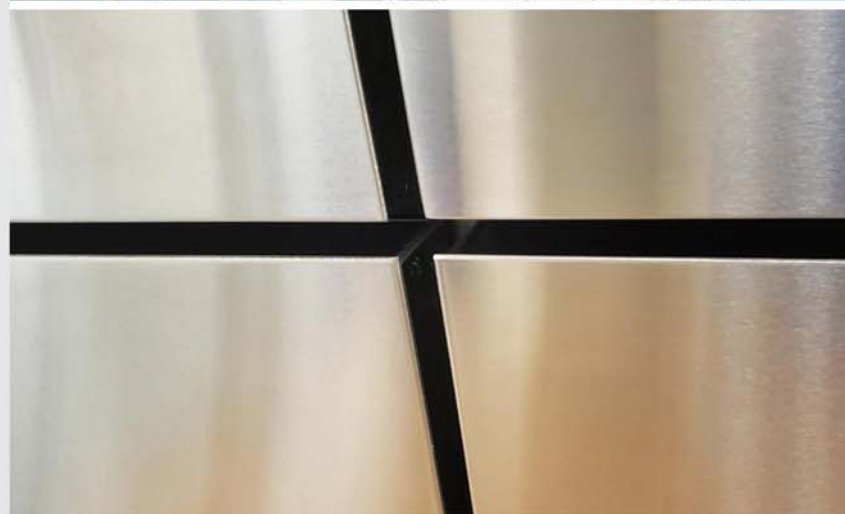
Arcwall Ship Lap features visible, but recessed, extruded frames, available in matching or contrasting colors to provide deeper reveals and contrasting shadow lines. Varying reveal options are more limited, due to the system's frame design.

Arcwall Ship Lap allows for a speedy, progressive installation with attachment only required at the long axis of the panel and no additional accessories to install. Tested to 105 psf, Ship Lap has superior pressure resistance in extreme wind load situations.

The unique Rainscreen Principle design has superior water shedding and is best utilized in horizontal panel orientations for maximum draining capacity.

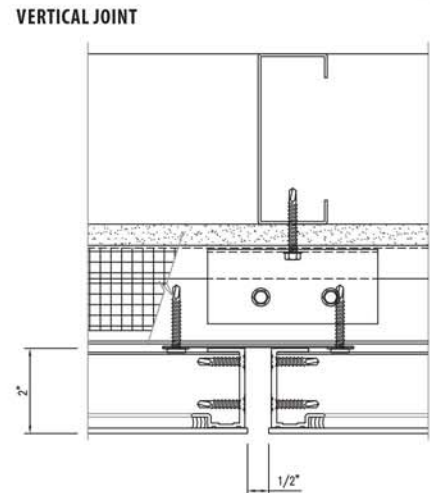
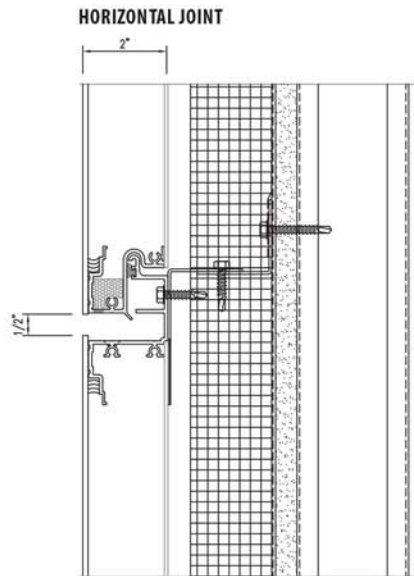
The fabrication efficiency of Arcwall, combined with Metalwërks simplified panel attachment options that speed installation, make for a highly competitive, high-end rain screen wall system. Arcwall Ship Lap panels are factory assembled with a flat plate facing, structurally adhered to an extruded aluminum panel frame and may be flat or curved. Joint sizes can be variable and reveals can use a complementary or contrasting finish.

All Arcwall systems install with concealed fasteners over continuous masonry, concrete, or as the outer cladding in a wall assembly that incorporates continuous insulation and a suitable air and water barrier. Solid metal panels are particularly useful where metal panels are used in pedestrian areas due to superior impact performance compared to other composite metal panel cladding products.



DETAILS

- Manufactured from solid aluminum or stainless plate with extruded aluminum framing
- Ship Lap design method is specifically engineered for horizontal panel orientations and has superior water shedding and drainage characteristics
- Frame is exceptionally strong, has concealed attachment grooves along the panel length, and requires no additional clips at the panel perimeter.
- High resistance to denting and puncturing, ideal for high-traffic or abusive areas
- Mitered aluminum extrusion corners
- 0.5" (12.7 mm) standard horizontal and vertical joint with variable options
- Integrated knife plate reveals
- Floating plate appearance with deep perimeter reveals
- Adjustable furring to address variable construction tolerances and ensuring vertical sealing to air and water barrier, minimizing shims
- Non-combustible: minimal smoke or fuel contribution
- Avoids NFPA 285 complications by not using thermo-plastic cores
- All panel systems are reinforced/stiffened to resist deflection limits
- Ship Lap design has concealed horizontal gutters that weep moisture to the exterior through baffled weep holes
- Concealed fastened using corrosion-resistant self-tapping screws into an engineered screw pocket with integrated drip edge
- Concealed fasteners but panels can be individually removed
- Aluminum: post-applied finishing for long-term performance and uniform aesthetic
- As rainscreen systems rely on gravity to drain water, all skyward facing surfaces, copings, sloped conditions and all perimeters must be sealed
- 100% recyclable with high percentage of post-consumer and industrial content, which may contribute to LEED credits
- Seamless integration with other Metalwërks wall systems



DESIGN OPTIONS

- Panels may be flat or curved
- Variable reveals: Horizontal 0.25"-4" (6.35 mm-101.6 mm) and Vertical 0.25"-6" (6.35 mm-152.4 mm). Consult Metalwërks for Arcwall joint options.
- Available with appliqués or perforated face skins
- Virtually unlimited color options for aluminum plate
- Options for #4, #6, #8, and non-directional finishes for stainless steel plate
- Matching perforated and louvered panels
- Projecting eyebrows with integrated framing can be included
- Enclosures for exposed columns, beams or pilaster features can be clad using materials and joint treatments to achieve matching aesthetics
- Ideal for flat, curved, sloped or vertical walls and soffits where the design intent is for pronounced reveals between the panel units and extremely sharp panel edges

METAL SUBSTRATE AND FINISH OPTIONS

ALUMINUM

3003-H14 aluminum alloy-temper

Thickness: 0.125" (3.18 mm) standard, 0.188" (4.78 mm), 0.25" (6.35 mm) options

Finishes: Kynar® or architectural TGIC Polyester powder coating

STAINLESS STEEL

T304 or T316 for enhanced corrosion resistance

Thickness: 11 gauge (0.125") (3.18 mm) standard, 8 gauge (0.172") (4.37 mm), 7 gauge (0.188") (4.78 mm) options

Finishes: #4, #6, #8, and non-directional satin in smooth

PANEL SIZES

Widths: 12" (305 mm) to 72" (1,829 mm)*

Lengths: 12" (305 mm) to 240" (6,096 mm)*

Depth: 2.25" (57.15 mm) ('Ship Lap')

* Maximum panel size depends upon plate material, gauge, finish, and geometry

PANEL WEIGHT RANGE

(dependent upon gauge and geometry)

Aluminum: 2.62 - 4.42 lbs./ft²

Stainless Steel: 6.32 lbs./ft² ('Ship Lap')

Ranges provided for clarification. Consult with Metalwërks for further options

ACCESSORIES

Flashing: Formed aluminum or stainless steel sheet metal as required for base or penetration conditions produced from matching material/finish as panels

Coping: May be produced with the same material as the wall panel system

Furring Channels: As required for proper mounting of panels

Perforated Panels and Louvered Vents: For accents, screening or ventilation. Consult with Metalwërks for options.

Fasteners: Type 304 stainless steel or cadmium-plated as recommended

Shims: High impact thermally-broken plastic shims to maintain co-planar surfaces

WARRANTY

Material & Workmanship: 1-year standard, with 2- or 5-year options

Finish Integrity: 10-year standard up to 20-year

Econowall is an economical drained and back-ventilated rainscreen cladding system. Econowall panels are dry-set with interlocking longitudinal joints and rigid finished end conditions.

For any project demanding complete design flexibility, Econowall can accommodate artistic freedom with nearly unlimited finishes, profiles and size options at a competitive value. Econowall has finished end cap conditions and custom modules not available with roll formed products at competitive costs.

Econowall may be installed over continuous masonry, concrete, or as the outer cladding in a wall assembly that incorporates continuous insulation and a suitable air and water barrier. The system is also an excellent choice for open framing applications to clad un-conditioned spaces such as fascia, soffit, canopy or screen wall applications. Panels can be solid or perforated for soffit applications.

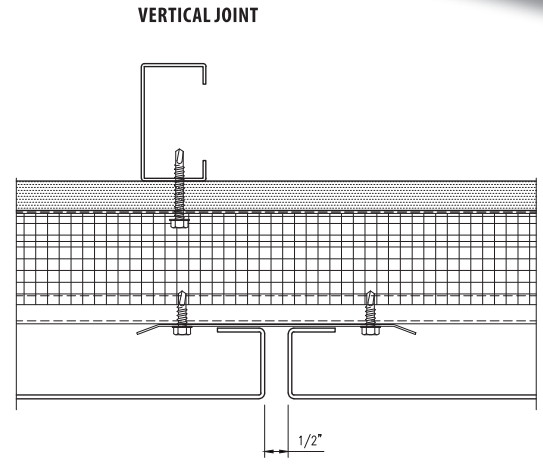
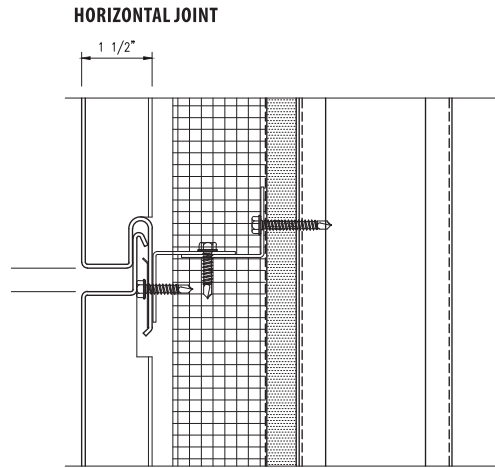
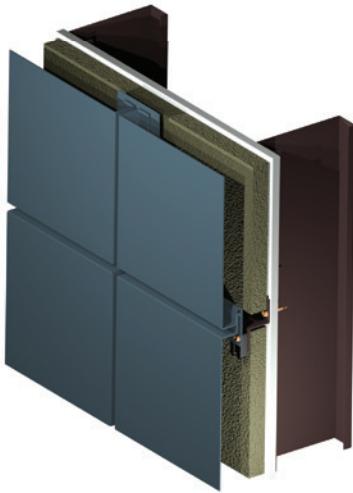


DETAILS

- Manufactured from pre-finished aluminum, stainless, or zinc with integral panel returns formed from a single piece of metal
- Fully mitered aluminum and stainless steel panels
- 0.5" (12.7 mm) standard horizontal and vertical joint with variable options
- Adjustable furring to address variable construction tolerances and ensuring vertical sealing to air and water barrier, minimizing shims
- Non-Combustible: minimal smoke or fuel contribution
- Avoids NFPA 285 complications by avoiding thermo-plastic cores
- All panel systems are reinforced/stiffened to resist deflection limits
- Panels install horizontally or vertically
- Concealed fastened using corrosion-resistant self-tapping screws
- As rainscreen systems rely on gravity to drain water, all skyward facing surfaces, copings, sloped conditions and all perimeters must be sealed
- 100% recyclable with high percentage of post-consumer and industrial content, which may contribute to LEED credits

DESIGN OPTIONS

- Panels may be mixed and variable modules in flat or 3D profiles
- Variable reveals: Horizontal 0.125" - 2" (3.18 mm - 50.8 mm); Vertical 0.25" - 6" (6.35 mm - 152.4 mm)
- Panel end joints can be staggered to create running bond patterns
- Unlimited color options for aluminum
- Options for #4, #6, #8, and non-directional finishes for stainless steel
- Matching perforated and louvered panels
- May also be used for column, beam and pilaster cladding
- Integrated shop formed reveals



METAL SUBSTRATE AND FINISH OPTIONS

ALUMINUM

3003-H14 aluminum alloy-temper

Thickness: 0.08" (2.03 mm) standard, 0.05" (1.27 mm), 0.063" (1.60 mm), 0.09" (2.29 mm)

Finishes: Kynar®, architectural TGIC polyester powder coating, or anodized

STAINLESS STEEL

T304 or T316

Thickness: 18 gauge (0.05") (1.27 mm) standard and 16 gauge (0.063") (1.60 mm) option

Finishes: #4, #6, #8, and non-directional satin in smooth or custom embossed patterns

ZINC

Thickness: 0.059" (1.5 mm) standard and 0.047" (1.2 mm) option

Finishes: Consult with Metalwërks for options

Zinc is a natural metal which has specific properties that will limit its use. It must be adequately drained, ventilated and weeped when used in exterior applications to prevent excessive corrosion. Please consult Metalwërks for the appropriate uses for your project design.

PANEL SIZES

Widths: 6" (152.4 mm) to 36" (914.4 mm)*

Lengths: 12" (305 mm) to 160" (4,064 mm)*

Depth: 1.5" (38.1 mm) minimum

* Maximum panel size depends upon material, gauge, finish, and geometry

PANEL WEIGHT RANGE

(dependent upon gauge and geometry)

Aluminum: 2.18 - 2.825 lbs./ft²

Stainless Steel: 2.994 - 3.477 lbs./ft²

Zinc: 3.58 lbs./ft² - Consult with Metalwërks

Ranges provided for clarification. Consult with Metalwërks for further options.

ACCESSORIES

Flashing: As required at base or penetration conditions produced in the same material finish as the panel system

Coping: Wall copings may be produced with the same material as the wall panel system

Furring Channels: As required for proper mounting of panels

Fasteners: Type 304 stainless steel or cadmium-plated as recommended

Shims: High impact thermally-broken plastic shims to maintain co-planar surfaces

WARRANTY

Material & Workmanship: 1-year standard, with 2- or 5-year options

Finish Integrity: 10-year standard and up to 20-year for coated aluminum

Metalwërks Sculpted frees designers to create iconic facades more easily and affordably than ever before by elevating three-dimensional wall panels to entirely new heights. This innovative dry-set rainscreen system features three complementary and interchangeable wall panel design schemes that produce the boldest three-dimensional forms possible.

Additionally, for enhanced visual expression, the 100% solid metal system is engineered for easy integration with LED lighting and features opportunities to incorporate other ornamental design elements. Plus, Sculpted provides opportunities to incorporate integrated planters and irrigation for growing vegetation.

Whether Sculpted is incorporated throughout the entirety of the building envelope or used solely for accented or featured areas, such as outdoor meeting spaces, the system easily interfaces with all other Metalwërks systems and alternative facade materials.

Sculpted may be installed over continuous masonry, concrete, or as the outer cladding in a wall assembly that incorporates continuous insulation and a suitable air and water barrier. Sculpted is also ideal for interior applications such as lobbies and atriums or any special gathering area.

Metalwërks can work with a design team to create other three-dimensional forms that meet your vision or design intent.



Minimal installs both horizontally and vertically. In a horizontal orientation, the panels can include optional continuous planter troughs for living walls. Optional LED lighting can also be integrated into these panels.

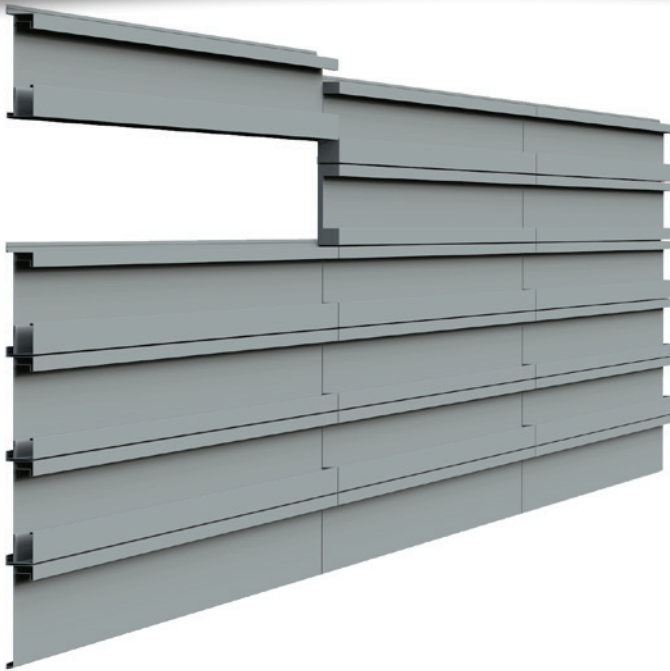
APPLICATIONS

- Architectural screen wall assemblies, walls for parking structures or monumental tower and/or facade features
- Prominent feature walls on the exterior facade facing publicly viewed elevations, using more economical Metalwërks wall systems on the less prominent walls
- Demising/privacy walls between residential unit balconies or pool/deck play level screen walls
- Interior lobby spaces in atria or clerestory spaces
- Exterior/Interior facades for large public spaces such as stadiums, hotels, convention centers, airports/transit centers
- Public gathering or convocation spaces at higher education facilities
- Greening wall surfaces and feature elements on green roof assemblies
- Kitchen/herb gardens for restaurants, bars, public plazas
- Lighted feature walls

*Patent Pending

DETAILS

- Manufactured from solid aluminum, stainless, or zinc plate with integral panel returns formed from a single piece of metal
- Solid aluminum and stainless steel: high resistance to denting and puncturing, ideal for high-traffic or abusive areas
- Fully mitered and welded corners ground smooth for seamless appearance
- 0.625" (15.88 mm) standard horizontal and vertical joint with variable options
- Adjustable furring to address variable construction tolerances and ensuring vertical sealing to air and water barrier, minimizing shims
- Concealed fastened using corrosion-resistant self-tapping screws
- Non-Combustible: minimal smoke or fuel contribution
- Avoids NFPA 285 complications by avoiding thermo-plastic cores
- All panel systems are reinforced/stiffened to resist deflection limits
- Aluminum: post-applied finishing for long-term performance and uniform aesthetic
- 100% recyclable with high percentage of post-consumer and industrial content, which may contribute to LEED credits
- Common panel platform for seamless integration with other Metalwërks wall systems



DESIGN OPTIONS

- Variable reveals: Horizontal 0.5" - 2" (12.7 mm - 50.8 mm); Vertical 0.25" - 6" (6.35 mm - 152.4 mm)
- Integrated LEDs
- Integrated planters and irrigation
- Unlimited color options for aluminum plate
- Options for #4, #6, #8, and non-directional finishes for stainless plate
- Matching perforated and louvered panels
- *Optional back-cuts on formed panel edges for a sharper bend and crisper appearance*

METAL SUBSTRATE AND FINISH OPTIONS

ALUMINUM

3003-H14 aluminum alloy-temper

Thickness: 0.125" (3.18 mm)

Finishes: Kynar®, architectural TGIC polyester powder coating, or anodized

STAINLESS STEEL

T304 or T316

Thickness: 18 gauge (0.05") (1.27 mm) standard, 16 gauge (0.063") (1.60 mm), 14 gauge (0.078") (1.98 mm), 12 gauge (0.109") (2.78 mm) options

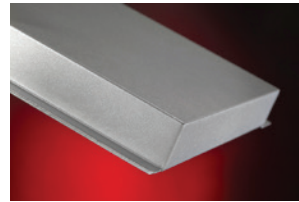
Finishes: #4, #6, #8, and non-directional satin in smooth or custom embossed patterns

ZINC

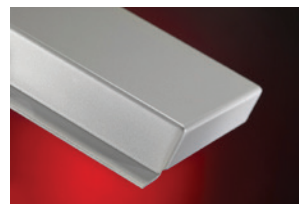
Thickness: 0.079" (2 mm)

Finishes: Consult with Metalwërks for options

Zinc is a natural metal which has specific properties that will limit its use. It must be adequately drained, ventilated and weeped when used in exterior applications to prevent excessive corrosion. Please consult Metalwërks for the appropriate uses for your project design.



SHARP CORNER



STANDARD CORNER

PANEL SIZES

Widths: Widths: 24" (610 mm) to 66" (1676 mm)*

Lengths: 24" (610 mm) to 160" (4,064 mm)*

Depth: Varies

* Maximum panel size depends upon plate material, gauge, finish, and geometry

PANEL WEIGHT RANGE

(dependent upon gauge and geometry)

Aluminum: 4.9 lbs./ft²

Stainless Steel: 8.43 lbs./ft²

Zinc: 8.04 lbs./ft²

Ranges provided for clarification. Consult with Metalwërks for further options.

ACCESSORIES

Flashing: 0.040" (1.02 mm) thick to 0.063" (1.60 mm) aluminum

Coping: Wall copings may be produced with the same material as the wall panel system

Furring / Framing Channels: Engineered secondary supports to accommodate added dead loads

Fasteners: Type 304 stainless steel or cadmium-plated as recommended

Shims: High impact thermally-broken plastic shims to maintain co-planar surfaces

WARRANTY

Material & Workmanship: 1-year standard, with 2- or 5-year options

Finish Integrity: 10-year standard and up to 20-year for coated aluminum

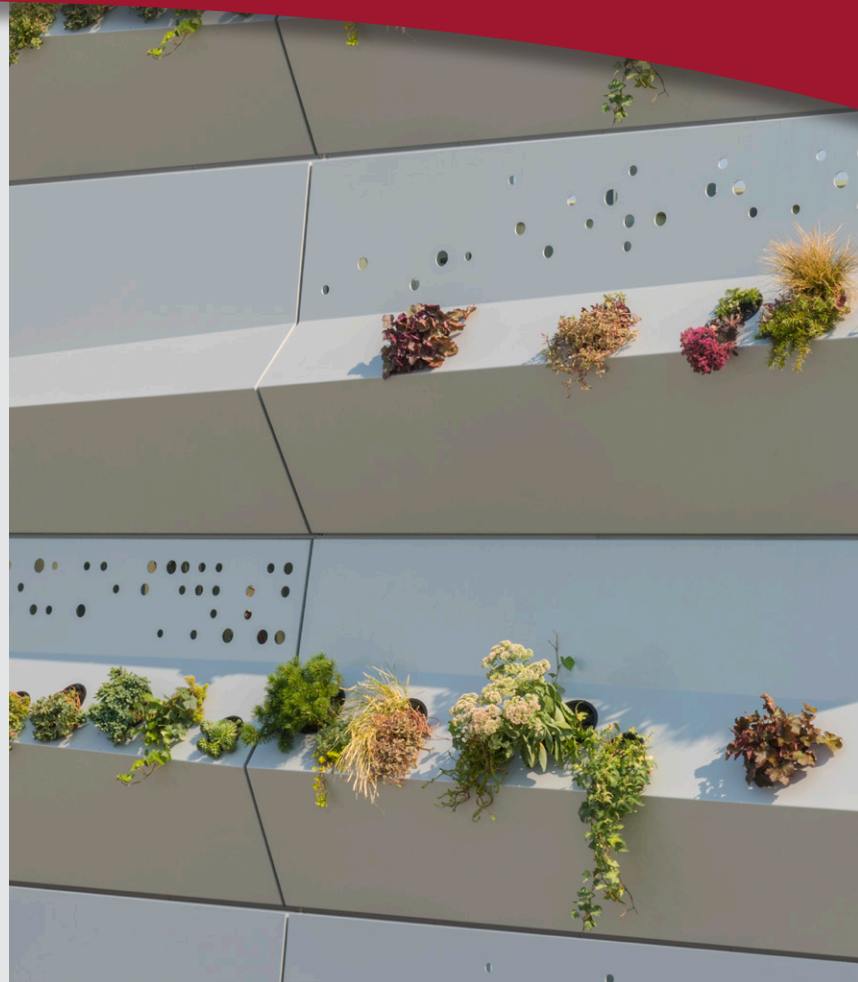
Metalwërks Sculpted frees designers to create iconic facades more easily and affordably than ever before by elevating three-dimensional wall panels to entirely new heights. This innovative dry-set rainscreen system features three complementary and interchangeable wall panel design schemes that produce the boldest three-dimensional forms possible.

Additionally, for enhanced visual expression, the 100% solid metal system is engineered for easy integration with LED lighting and features opportunities to incorporate other ornamental design elements. Plus, Sculpted provides opportunities to incorporate integrated planters and irrigation for growing vegetation.

Whether Sculpted is incorporated throughout the entirety of the building envelope or used solely for accented or featured areas, such as outdoor meeting spaces, the system easily interfaces with all other Metalwërks systems and alternative facade materials.

Sculpted may be installed over continuous masonry, concrete, or as the outer cladding in a wall assembly that incorporates continuous insulation and a suitable air and water barrier. Sculpted is also ideal for interior applications such as lobbies and atriums or any special gathering area.

Metalwërks can work with a design team to create other three-dimensional forms that meet your vision or design intent.



Parametric panels are the most intricate with a unique sloping and tapering style. These panels may be installed horizontally or vertically, and allow for the addition of custom transverse score patterns, cut holes, graphics, letters or logos which can also be backlit with Integrated LEDs. Holes can also be incorporated for receiving planters for growing vegetation. Parametric offers a high degree of 3D design options.

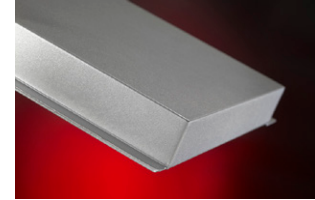
APPLICATIONS

- Architectural screen wall assemblies, walls for parking structures or monumental tower and/or facade features
- Prominent feature walls on the exterior facade facing publicly viewed elevations, using more economical Metalwërks wall systems on the less prominent walls
- Demising/privacy walls between residential unit balconies or pool/deck play level screen walls
- Interior lobby spaces in atria or clerestory spaces
- Exterior/Interior facades for large public spaces such as stadiums, hotels, convention centers, airports/transit centers
- Public gathering or convocation spaces at higher education facilities
- Greening wall surfaces and feature elements on green roof assemblies
- Kitchen/herb gardens for restaurants, bars, public plazas
- Lighted feature walls

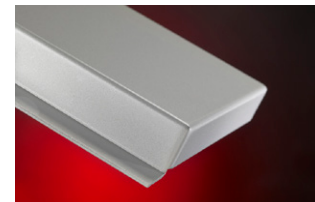
*Patent Pending

DETAILS

- Manufactured from solid aluminum, stainless, or zinc plate with integral panel returns formed from a single piece of metal
- Solid aluminum and stainless steel: high resistance to denting and puncturing, ideal for high-traffic or abusive areas
- Fully mitered and welded corners ground smooth for seamless appearance
- 0.625" (15.88 mm) standard horizontal and vertical joint with variable options
- Adjustable furring to address variable construction tolerances and ensuring vertical sealing to air and water barrier, minimizing shims
- Non-Combustible: minimal smoke or fuel contribution
- Avoids NFPA 285 complications by avoiding thermo-plastic cores
- All panel systems are reinforced/stiffened to resist deflection limits
- Concealed fastened using corrosion-resistant self-tapping screws
- Aluminum: post-applied finishing for long-term performance and uniform aesthetic
- 100% recyclable with high percentage of post-consumer and industrial content, which may contribute to LEED credits
- Common panel platform for seamless integration with other Metalwërks wall systems



SHARP CORNER



STANDARD CORNER

DESIGN OPTIONS

- Variable reveals: Horizontal 0.5" - 2" (12.7 mm - 50.8 mm); Vertical 0.25" - 6" (6.35 mm - 152.4 mm)
- Integrated LEDs
- Integrated planters and irrigation
- Unlimited color options for aluminum plate
- Options for #4, #6, #8, and non-directional finishes for stainless plate
- Matching perforated and louvered panels
- *Optional back-cuts on formed panel edges for a sharper bend and crisper appearance*

METAL SUBSTRATE AND FINISH OPTIONS

ALUMINUM

3003-H14 aluminum alloy-temper

Thickness: 0.125" (3.18 mm)

Finishes: Kynar®, architectural TGIC polyester powder coating, or anodized

STAINLESS STEEL

T304 or T316

Thickness: 18 gauge (0.05") (1.27 mm) standard, 16 gauge (0.063") (1.60 mm), 14 gauge (0.078") (1.98 mm), 12 gauge (0.109") (2.78 mm) options

Finishes: #4, #6, #8, and non-directional satin in smooth or custom embossed patterns

ZINC

Thickness: 0.079" (2 mm)

Finishes: Consult with Metalwërks for options

Zinc is a natural metal which has specific properties that will limit its use. It must be adequately drained, ventilated and weeped when used in exterior applications to prevent excessive corrosion. Please consult Metalwërks for the appropriate uses for your project design.

PANEL SIZES

Widths: 24" (610 mm) to 50" (1,270 mm)*

Lengths: 24" (610 mm) to 160" (4,064 mm)*

Depth: Varies

* Maximum panel size depends upon plate material, gauge, finish, and geometry

PANEL WEIGHT RANGE

(dependent upon gauge and geometry)

Aluminum: 3.5 lbs./ft²

Stainless Steel: 6.02 lbs./ft²

Zinc: 5.74 lbs./ft²

Ranges provided for clarification. Consult with Metalwërks for further options.

ACCESSORIES

Flashing: 0.040" (1.02 mm) thick to 0.063" (1.60 mm) aluminum

Coping: Wall copings may be produced with the same material as the wall panel system

Furring / Framing Channels: Engineered secondary supports to accommodate added dead loads

Fasteners: Type 304 stainless steel or cadmium-plated as recommended

Shims: High impact thermally-broken plastic shims to maintain co-planar surfaces

WARRANTY

Material & Workmanship: 1-year standard, with 2- or 5-year options

Finish Integrity: 10-year standard and up to 20-year for coated aluminum

Metalwërks Sculpted frees designers to create iconic facades more easily and affordably than ever before by elevating three-dimensional wall panels to entirely new heights. This innovative dry-set rainscreen system features three complementary and interchangeable wall panel design schemes that produce the boldest three-dimensional forms possible.

Additionally, for enhanced visual expression, the 100% solid metal system is engineered for easy integration with LED lighting and features opportunities to incorporate other ornamental design elements. Plus, Sculpted provides opportunities to incorporate integrated planters and irrigation for growing vegetation.

Whether Sculpted is incorporated throughout the entirety of the building envelope or used solely for accented or featured areas, such as outdoor meeting spaces, the system easily interfaces with all other Metalwërks systems and alternative facade materials.

Sculpted may be installed over continuous masonry, concrete, or as the outer cladding in a wall assembly that incorporates continuous insulation and a suitable air and water barrier. Sculpted is also ideal for interior applications such as lobbies and atriums or any special gathering area.

Metalwërks can work with a design team to create other three-dimensional forms that meet your vision or design intent.



Ribbon panels install horizontally to create an elegant and intriguing basket weave pattern. Ribbon panels can also accommodate integrated, automated or manual irrigation systems, planters and LED accent lighting.

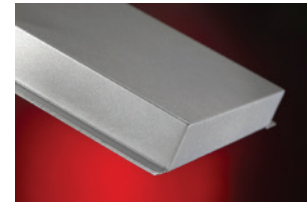
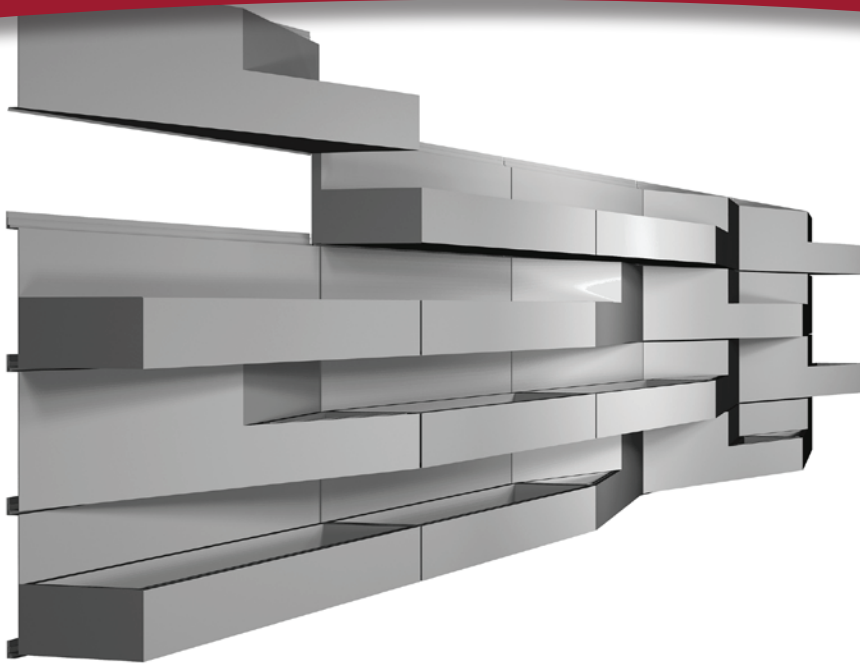
APPLICATIONS

- Architectural screen wall assemblies, walls for parking structures or monumental tower and/or facade features
- Prominent feature walls on the exterior facade facing publicly viewed elevations, using more economical Metalwërks wall systems on the less prominent walls
- Demising/privacy walls between residential unit balconies or pool/deck play level screen walls
- Interior lobby spaces in atria or clerestory spaces
- Exterior/Interior facades for large public spaces such as stadiums, hotels, convention centers, airports/transit centers
- Public gathering or convocation spaces at higher education facilities
- Greening wall surfaces and feature elements on green roof assemblies
- Kitchen/herb gardens for restaurants, bars, public plazas
- Lighted feature walls

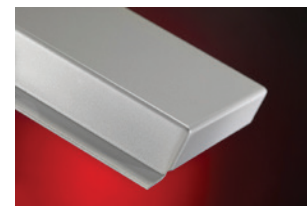
*Patent Pending

DETAILS

- Manufactured from solid aluminum, stainless, or zinc plate with integral panel returns formed from a single piece of metal
- Solid aluminum and stainless steel: high resistance to denting and puncturing, ideal for high-traffic or abusive areas
- Fully mitered and welded corners ground smooth for seamless appearance
- 0.625" (15.88 mm) standard horizontal and vertical joint with variable options
- Adjustable furring to address variable construction tolerances and ensuring vertical sealing to air and water barrier, minimizing shims
- Non-Combustible: minimal smoke or fuel contribution
- Avoids NFPA 285 complications by avoiding thermo-plastic cores
- All panel systems are reinforced/stiffened to resist deflection limits
- Concealed fastened using corrosion-resistant self-tapping screws
- Aluminum: post-applied finishing for long-term performance and uniform aesthetic
- 100% recyclable with high percentage of post-consumer and industrial content, which may contribute to LEED credits
- Common panel platform for seamless integration with other Metalwërks wall systems



SHARP CORNER



STANDARD CORNER

DESIGN OPTIONS

- Variable reveals: Horizontal 0.5" - 2" (12.7 mm - 50.8 mm); Vertical 0.25" - 6" (6.35 mm - 152.4 mm)
- Integrated LEDs
- Integrated planters and irrigation
- Unlimited color options for aluminum plate
- Options for #4, #6, #8, and non-directional finishes for stainless plate
- Matching perforated and louvered panels
- *Optional back-cuts on formed panel edges for a sharper bend and crisper appearance*

METAL SUBSTRATE AND FINISH OPTIONS

ALUMINUM

3003-H14 aluminum alloy-temper

Thickness: 0.125" (3.18 mm)

Finishes: Kynar®, architectural TGIC polyester powder coating, or anodized

STAINLESS STEEL

T304 or T316

Thickness: 18 gauge (0.05") (1.27 mm) standard, 16 gauge (0.063") (1.60 mm), 14 gauge (0.078") (1.98 mm), 12 gauge (0.109") (2.78 mm) options

Finishes: #4, #6, #8, and non-directional satin in smooth or custom embossed patterns

ZINC

Thickness: 0.079" (2 mm)

Finishes: Consult with Metalwërks for options

Zinc is a natural metal which has specific properties that will limit its use. It must be adequately drained, ventilated and weeped when used in exterior applications to prevent excessive corrosion. Please consult Metalwërks for the appropriate uses for your project design.

PANEL SIZES

Widths: 24" (610 mm) to 48" (1,219 mm)*

Lengths: 48" (1219 mm) to 160" (4,064 mm)*

Depth: Varies

* Maximum panel size depends upon plate material, gauge, finish, and geometry

PANEL WEIGHT RANGE

(dependent upon gauge and geometry)

Aluminum: Aluminum: 7.31 - 12.03 lbs./ft²

Stainless Steel: 12.6 - 21 lbs./ft²

Zinc: 12 - 19.8 lbs./ft²

Ranges provided for clarification. Consult with Metalwërks for further options.

ACCESSORIES

Flashing: 0.040" (1.02 mm) thick to 0.063" (1.60 mm) aluminum

Coping: Wall copings may be produced with the same material as the wall panel system

Furring / Framing Channels: Engineered secondary supports to accommodate added dead loads

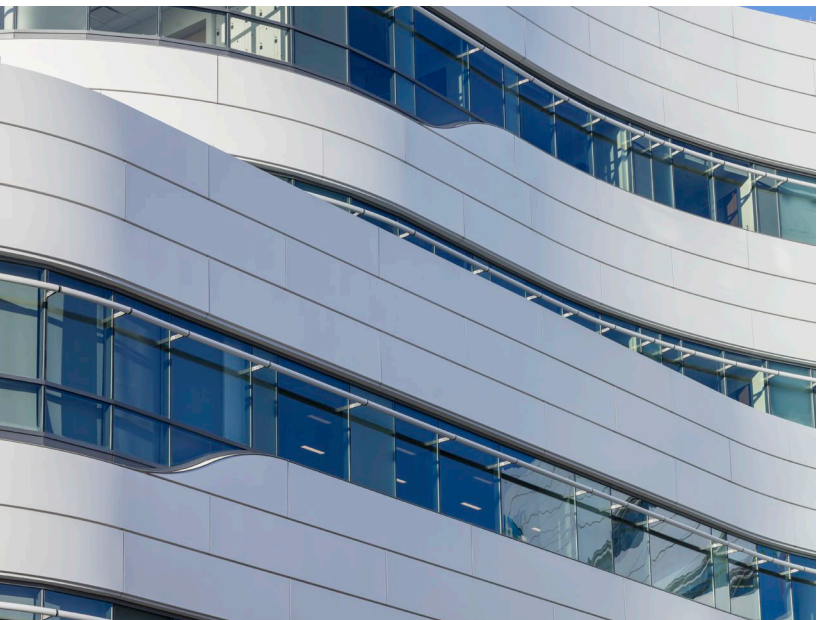
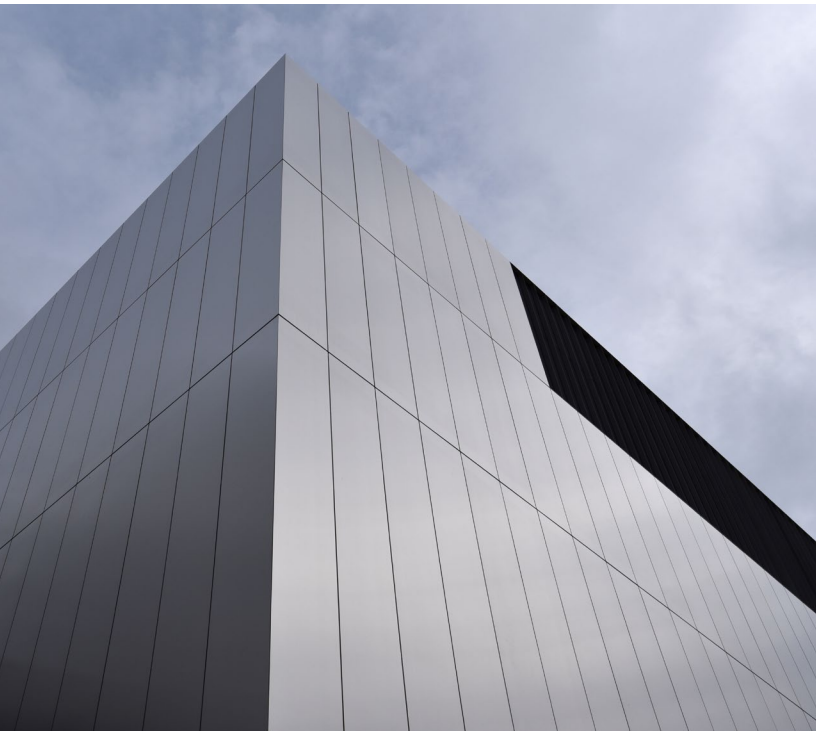
Fasteners: Type 304 stainless steel or cadmium-plated as recommended

Shims: High impact thermally-broken plastic shims to maintain co-planar surfaces

WARRANTY

Material & Workmanship: 1-year standard, with 2- or 5-year options

Finish Integrity: 10-year standard and up to 20-year for coated aluminum



200 Gale Lane
Kennett Square, PA 19348
metalwerksusa.com
800-321-7816