

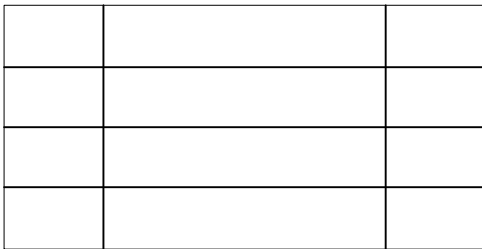
TABLE OF CONTENTS:

- | | |
|---|---|
| 1) HORIZONTAL JOINT | 7) PANEL JAMB AT WINDOW |
| 1A) HORIZONTAL JOINT WITH INSULATION | 7A) PANEL JAMB AT WINDOW WITH INSULATION |
| 2) VERTICAL JOINT | 8) PANEL HEAD AT CURTAIN WALL SILL |
| 2A) VERTICAL JOINT WITH INSULATION | 8A) PANEL HEAD AT CURTAINWALL SILL WITH INSULATION |
| 3) PANEL SILL | 9) PANEL SILL AT CURTAIN WALL HEAD |
| 3A) PANEL SILL WITH INSULATION | 9A) PANEL SILL AT CURTAIN WALL HEAD WITH INSULATION |
| 4) PANEL JAMB | 10) PANEL JAMB AT CURTAINWALL |
| 4A) PANEL JAMB WITH INSULATION | 10A) PANEL JAMB AT CURTAINWALL WITH INSULATION |
| 5) PANEL HEAD AND WINDOW SILL | 11) COPING DETAIL |
| 5A) PANEL HEAD AT WINDOW SILL WITH INSULATION | 11A) COPING DETAIL WITH INSULATION |
| 6) PANEL SILL AT WINDOW HEAD | 12) OUTSIDE CORNER DETAIL |
| 6A) PANEL SILL AT WINDOW HEAD WITH INSULATION | 12A) OUTSIDE CORNER DETAIL WITH INSULATION |
| | 12B) OPTIONAL OUTSIDE CORNER DETAILS |
| | 13) INSIDE CORNER |
| | 13A) INSIDE CORNER DETAIL WITH INSULATION |
| | 13B) MITERED INSIDE CORNER DETAIL OPTION |

GENERAL PANEL SYSTEM NOTES:

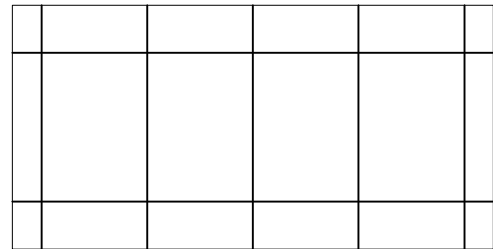
- ARCWALL ACM SPLINE PANEL SYSTEM IS A RAINSCREEN SYSTEM WHICH REQUIRES A BACKUP SUBSTRATE SYSTEM TO BE SEALED. THE SHEATHING AND AIR-VAPOR BARRIER SHOULD BE DESIGNED TO WITHSTAND THE SPECIFIED PERFORMANCE CRITERIA.
- ALL PENETRATIONS BY FASTENERS FOR THE PANEL SYSTEM THROUGH THE AIR/VAPOR BARRIER SHOULD BE SEALED AS RECOMMENDED BY THE SPECIFIED A/V BARRIER SUPPLIER SELECTED BY THE DESIGN PROFESSIONAL.
- ALL SYSTEM DETAILS SHOWN HERE ARE FOR A HORIZONTALLY ATTACHED PANEL SYSTEM. VERTICAL ATTACHMENT DETAILS WILL REQUIRE EITHER HORIZONTAL FURRING OR A 16 GAGE STUD LOCATED AT VERTICAL JOINTS. PLEASE CONTACT METALWERKS FOR ADDITIONAL INFORMATION.

ELEVATION JOINT OPTIONS

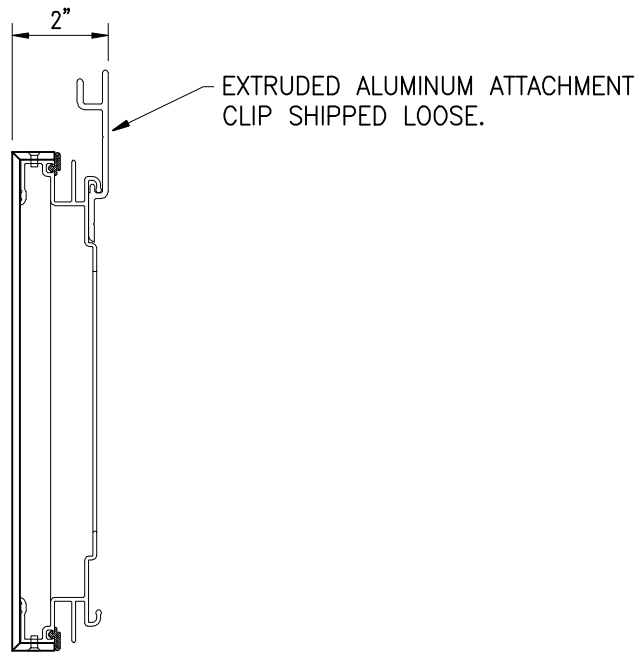


HORIZONTAL ATTACHMENT

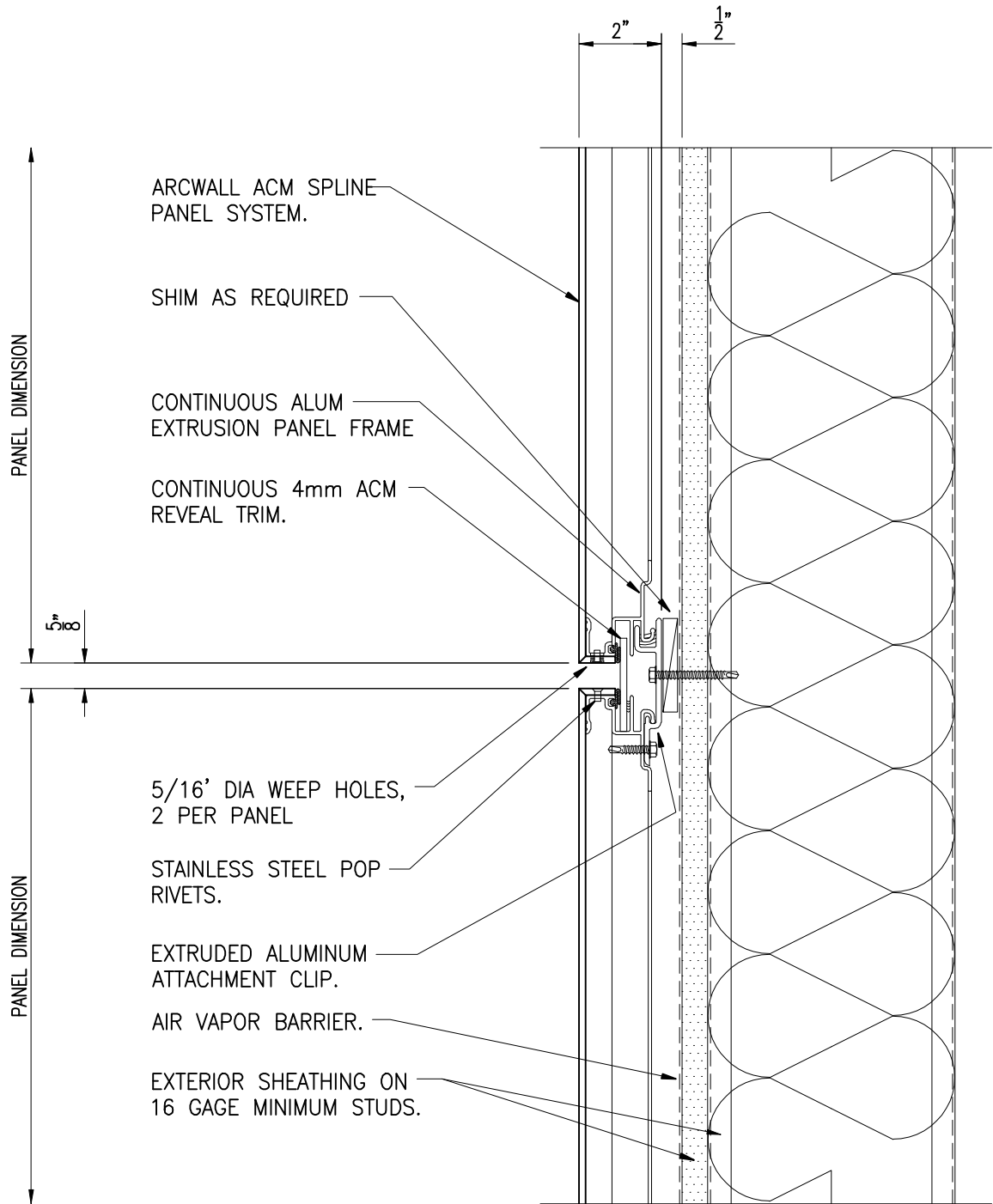
OR



VERTICAL ATTACHMENT

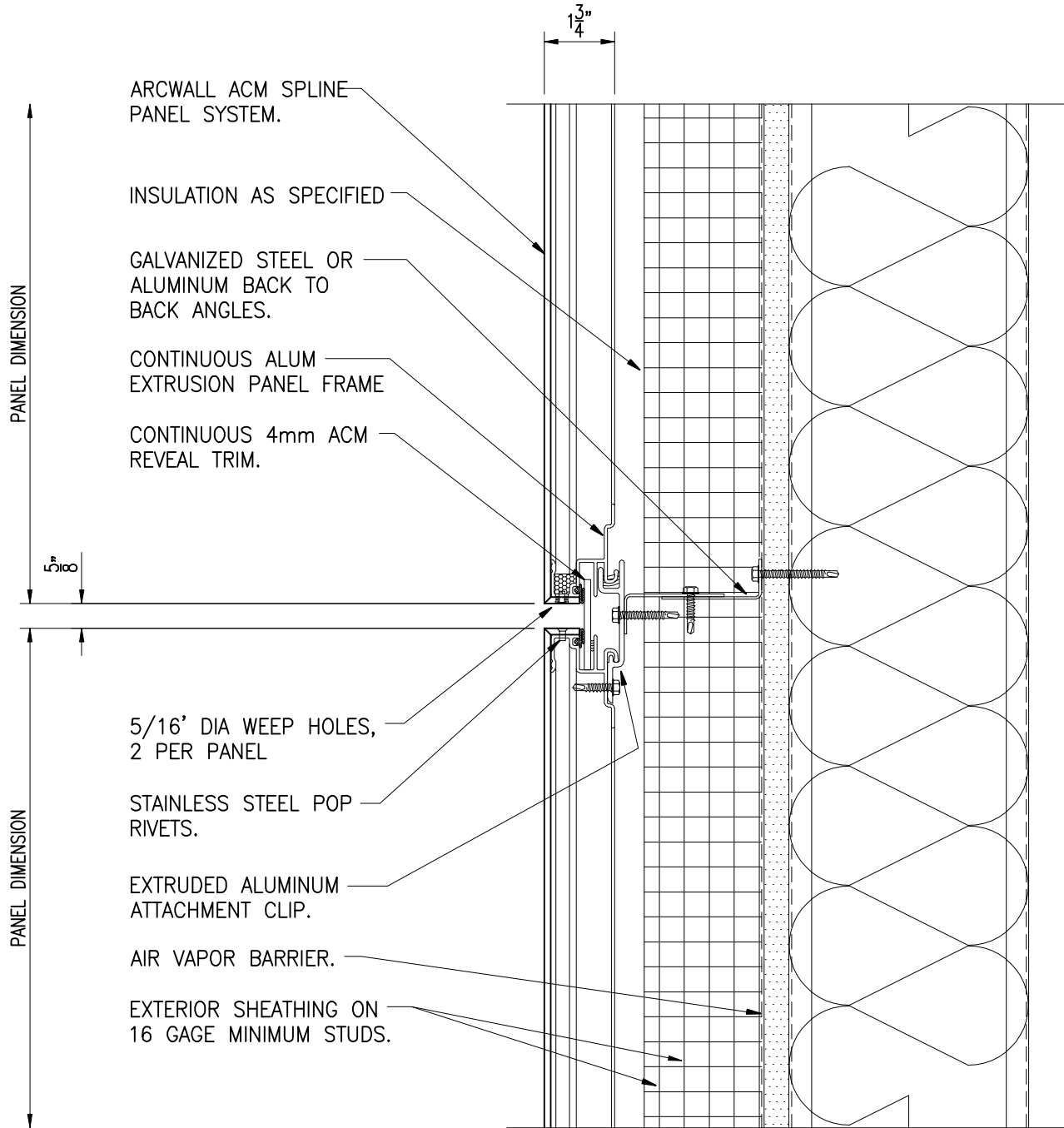


STANDARD PANEL PROFILE



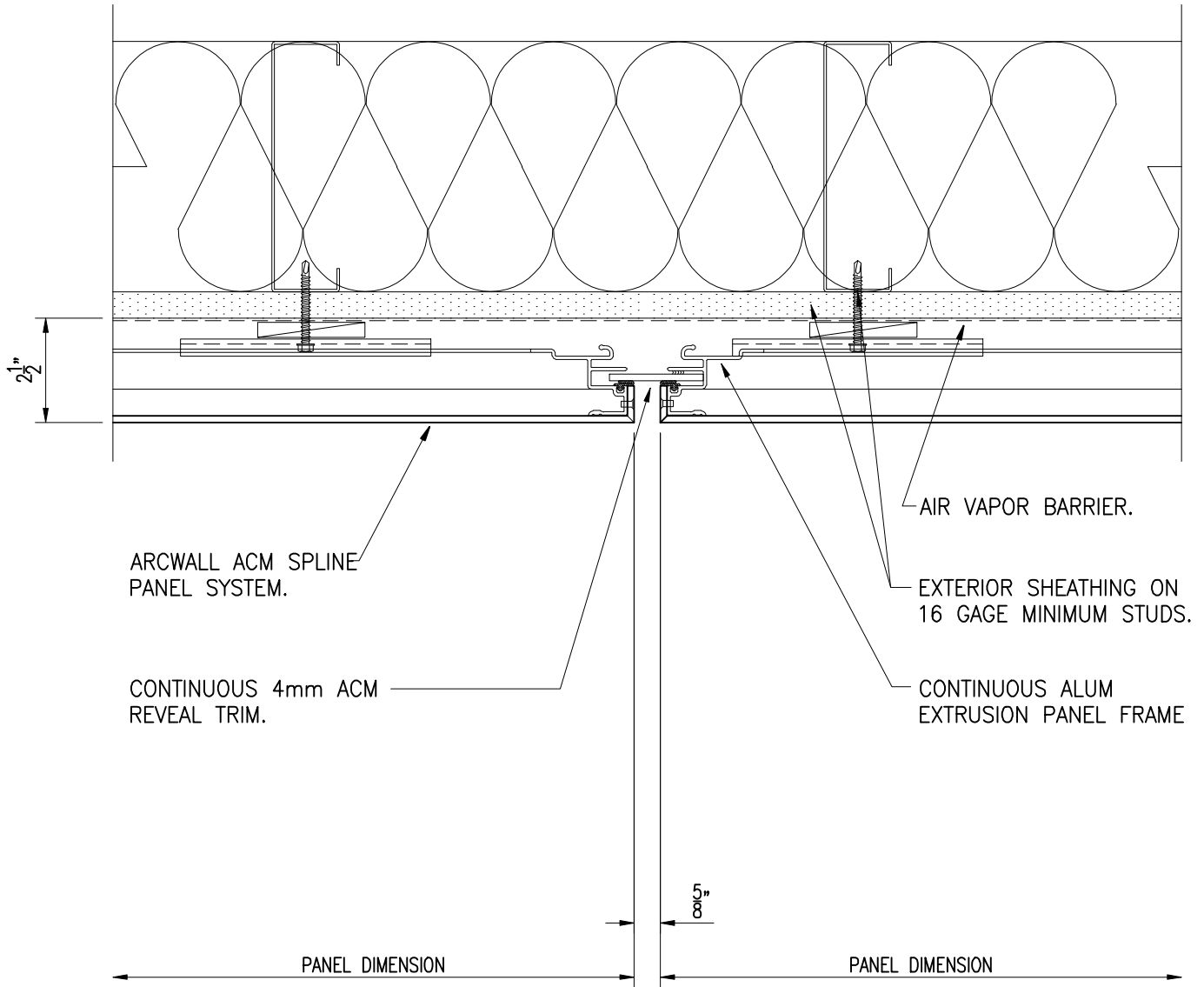
OPTIONAL REVEAL SIZES ARE AVAILABLE. PLEASE CONTACT METALWERKS FOR MORE INFORMATION

1) Horizontal Joint

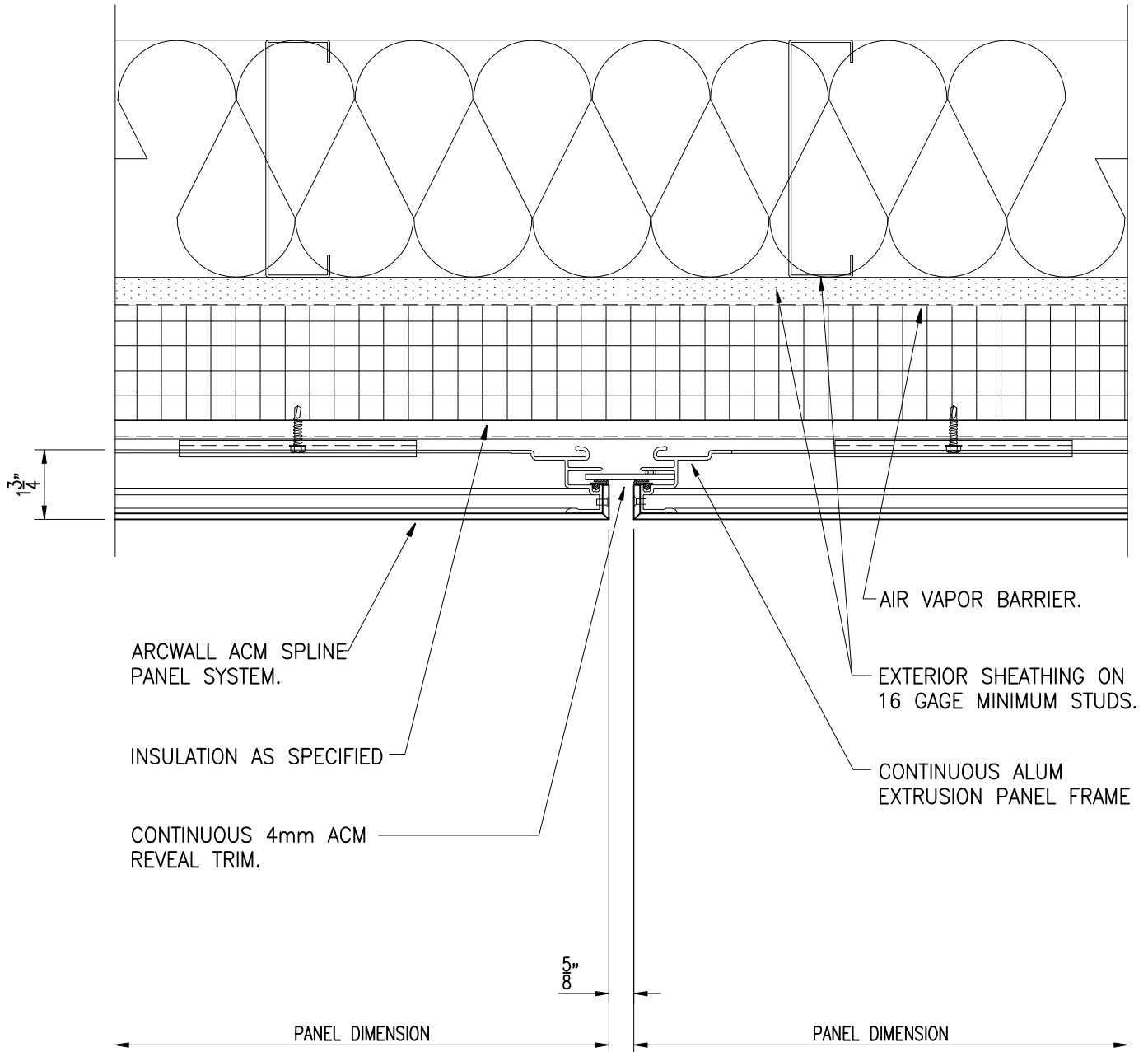


OPTIONAL REVEAL SIZES ARE AVAILABLE. PLEASE CONTACT METALWERKS FOR MORE INFORMATION

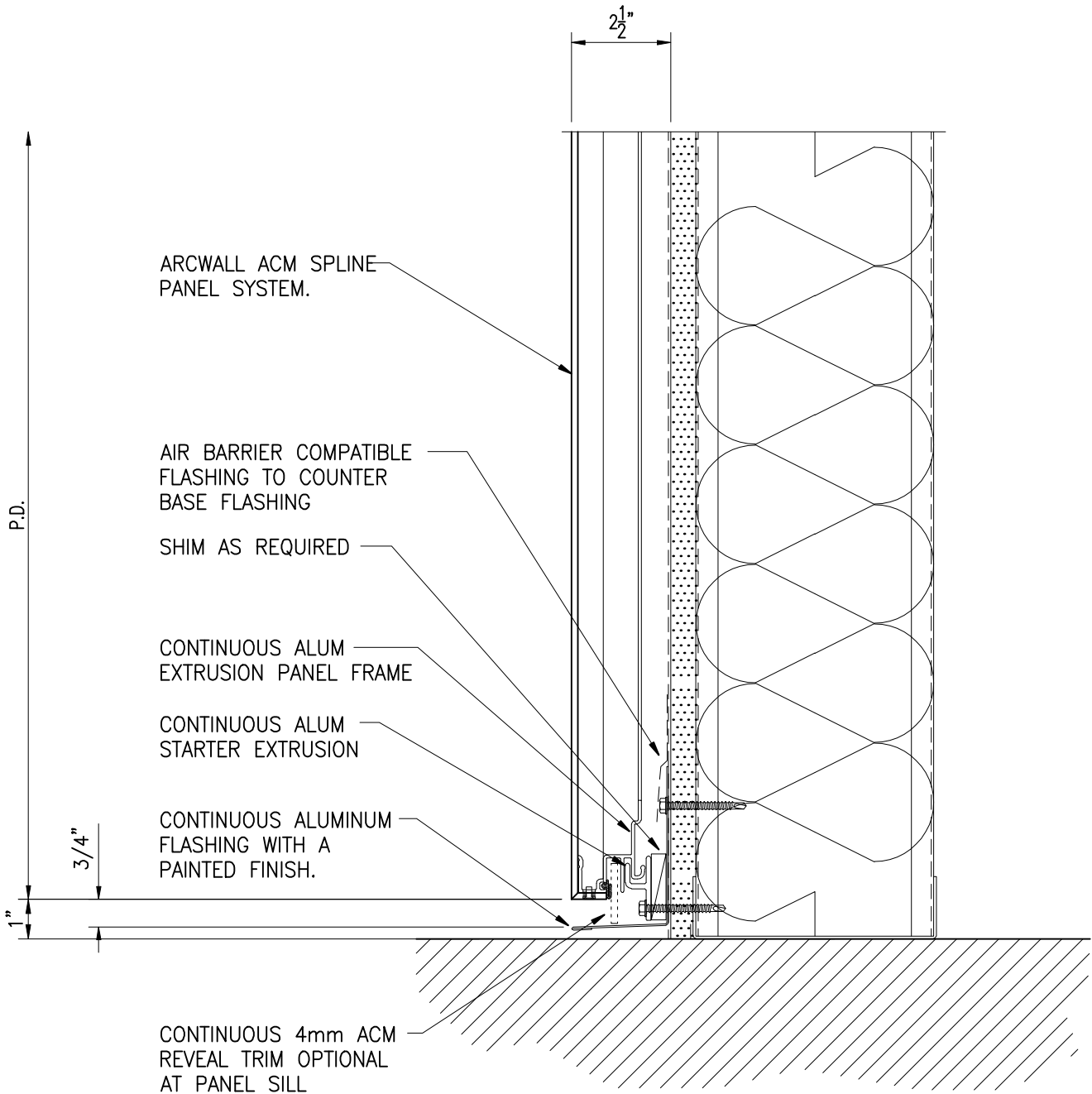
1) Horizontal Joint with Insulation



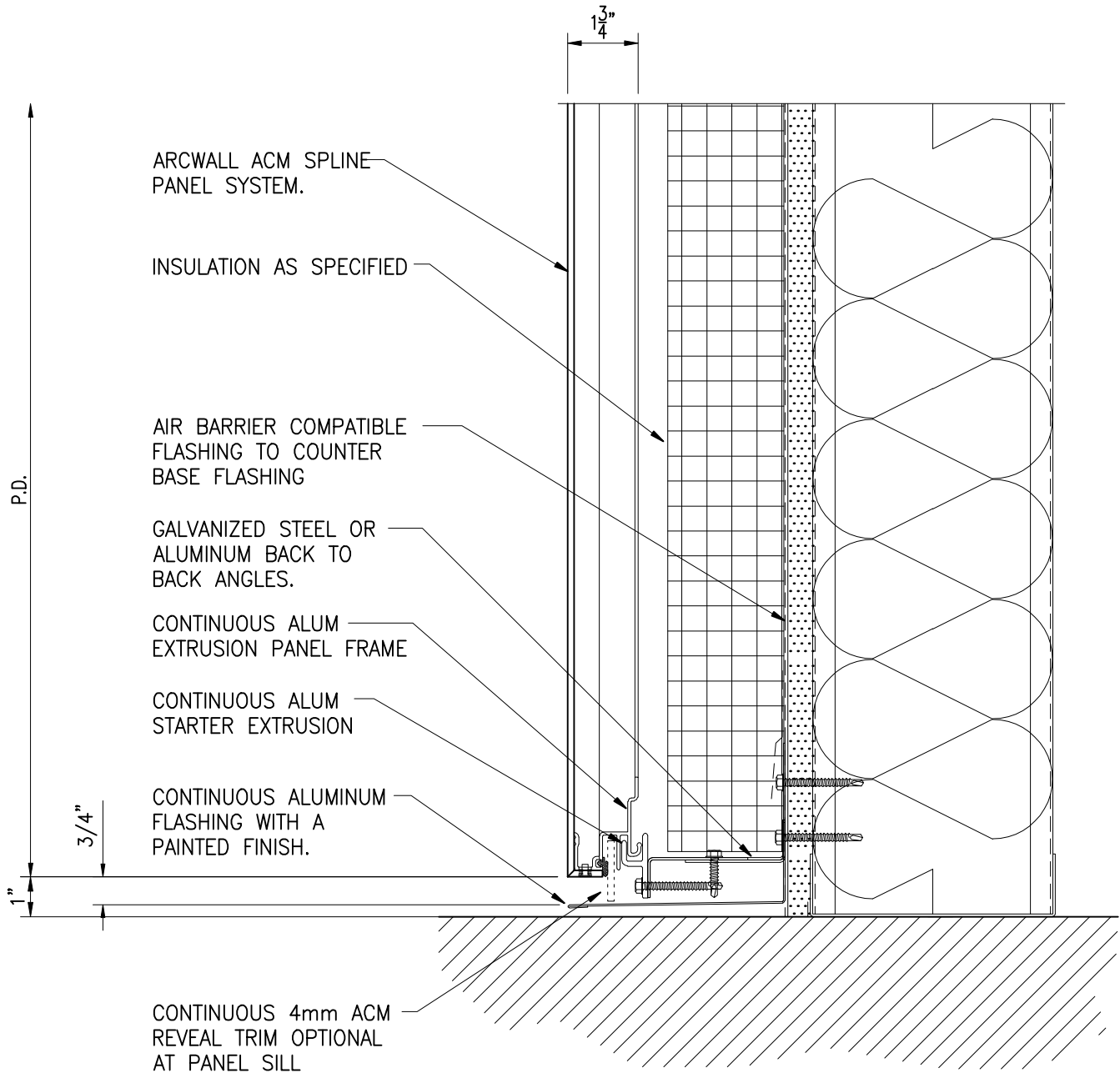
2) Vertical Joint



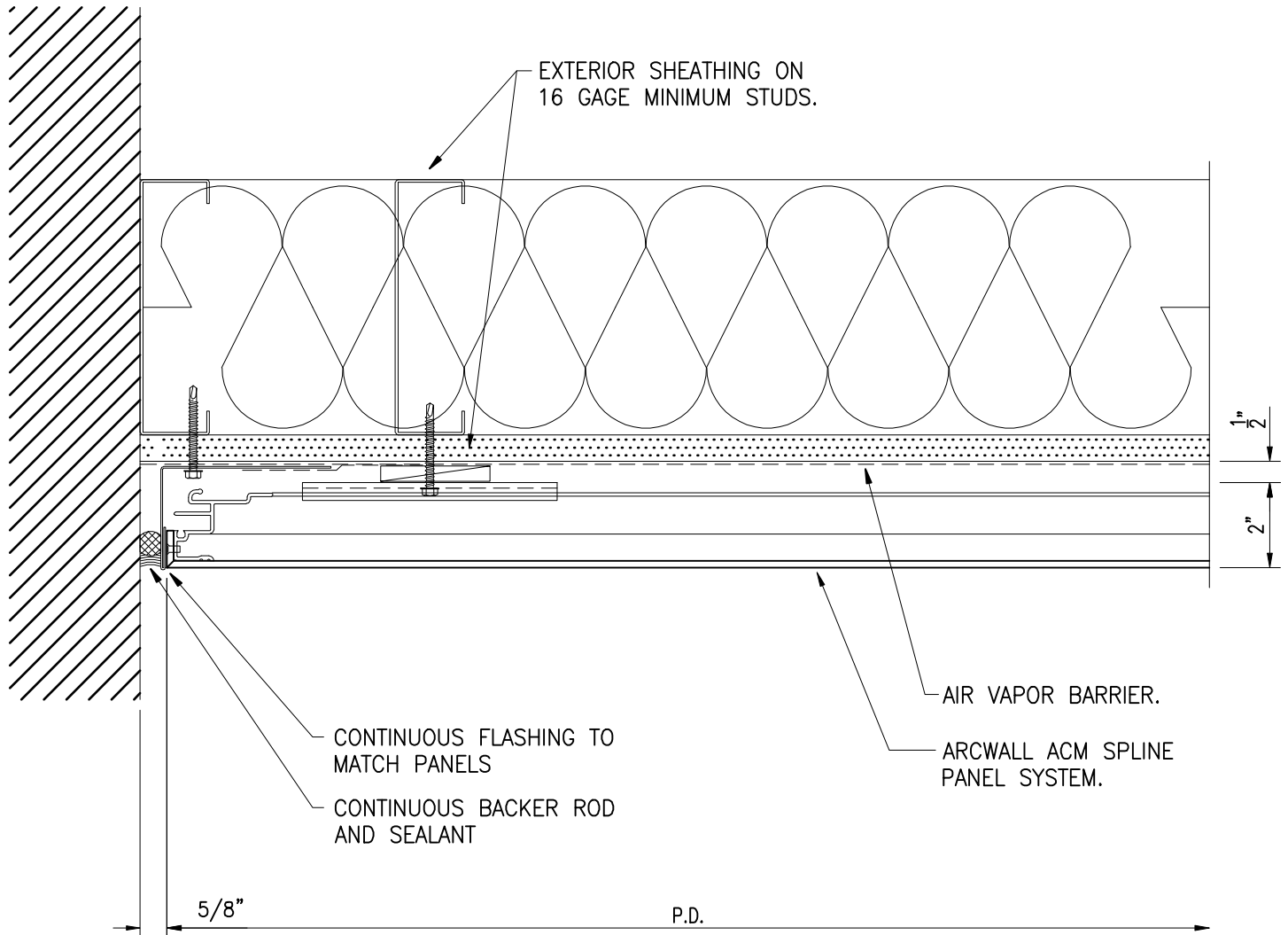
2A) Vertical Joint with Insulation



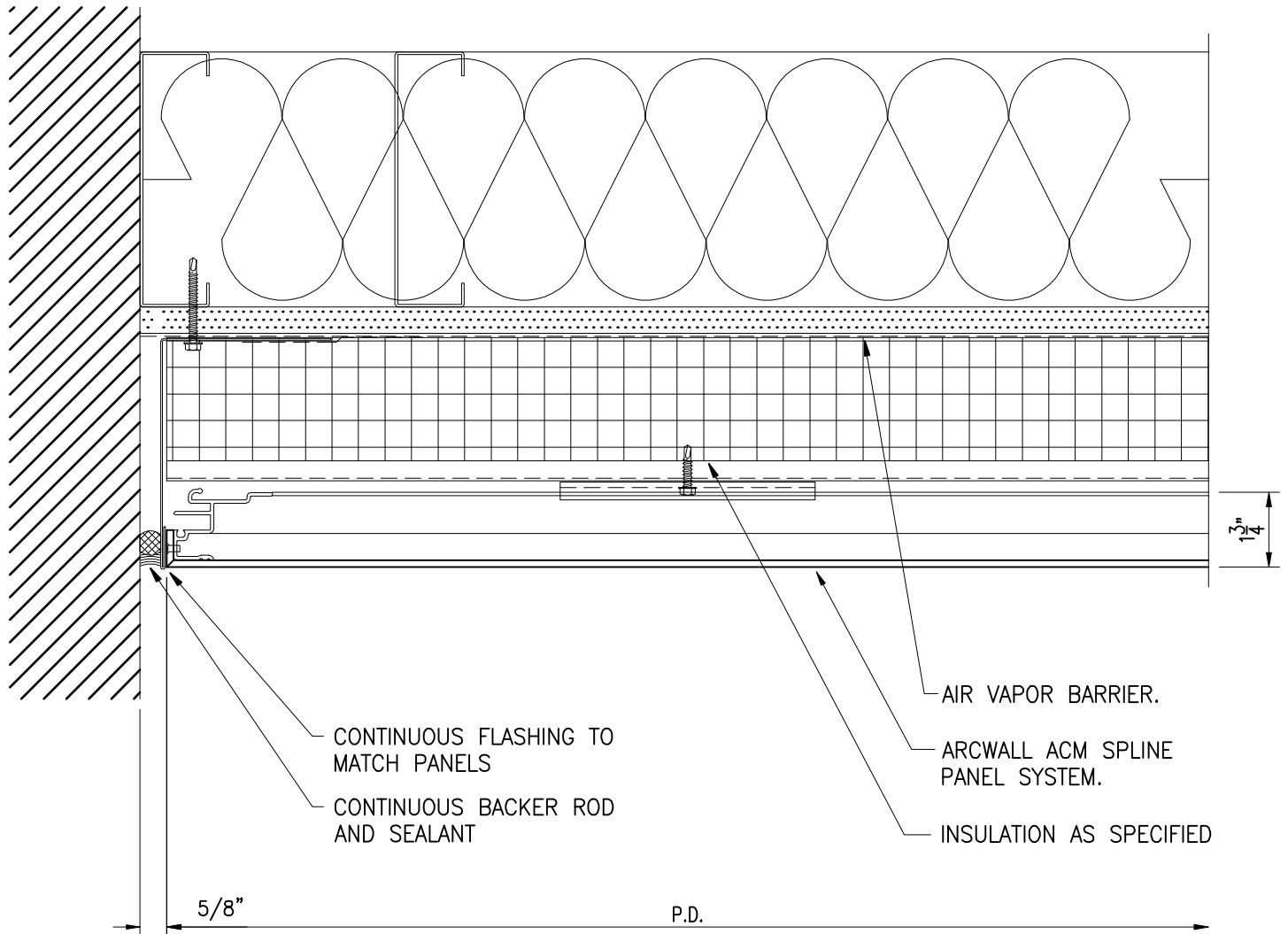
3) Panel Sill



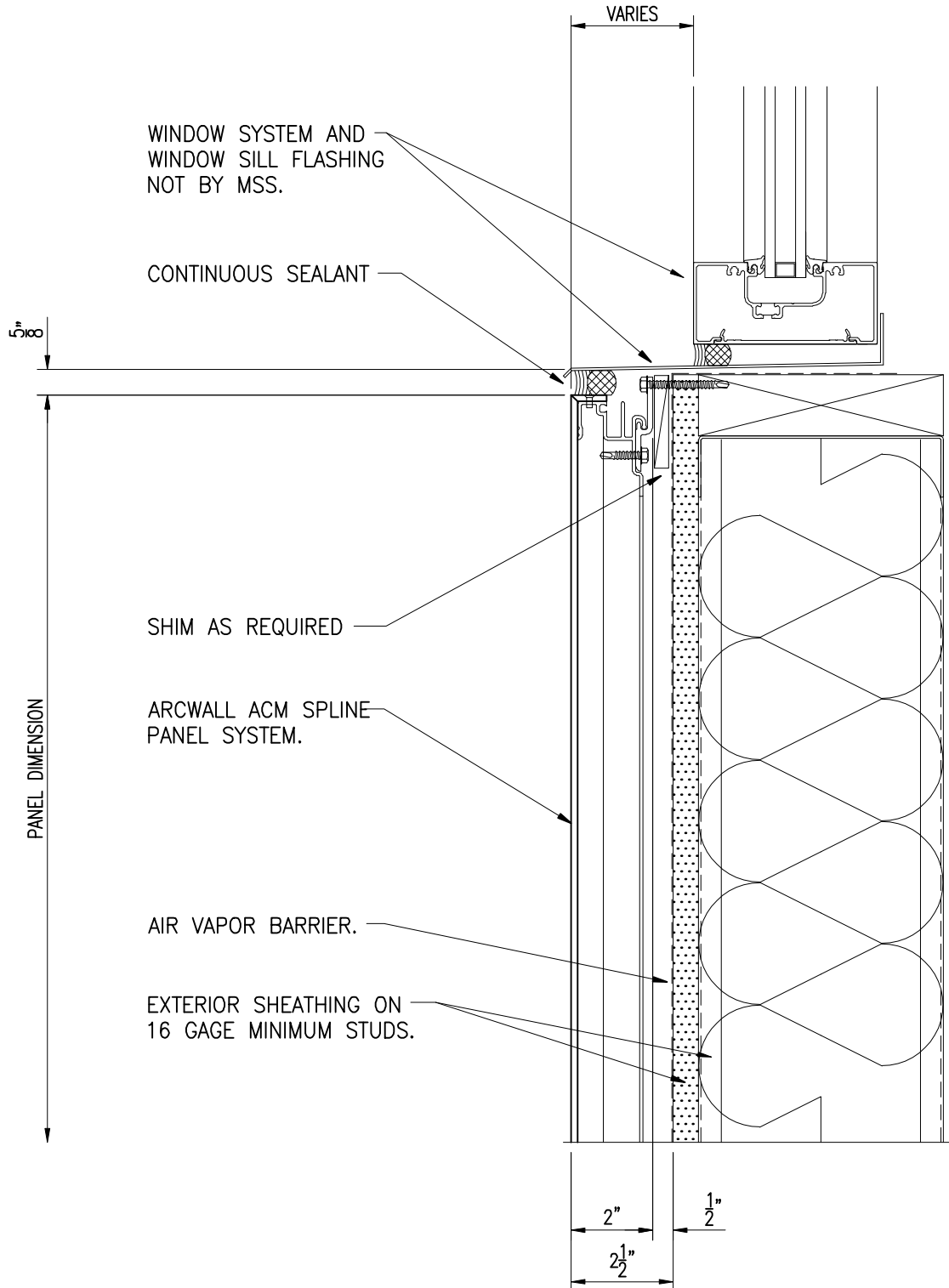
3A) Panel Sill with Insulation



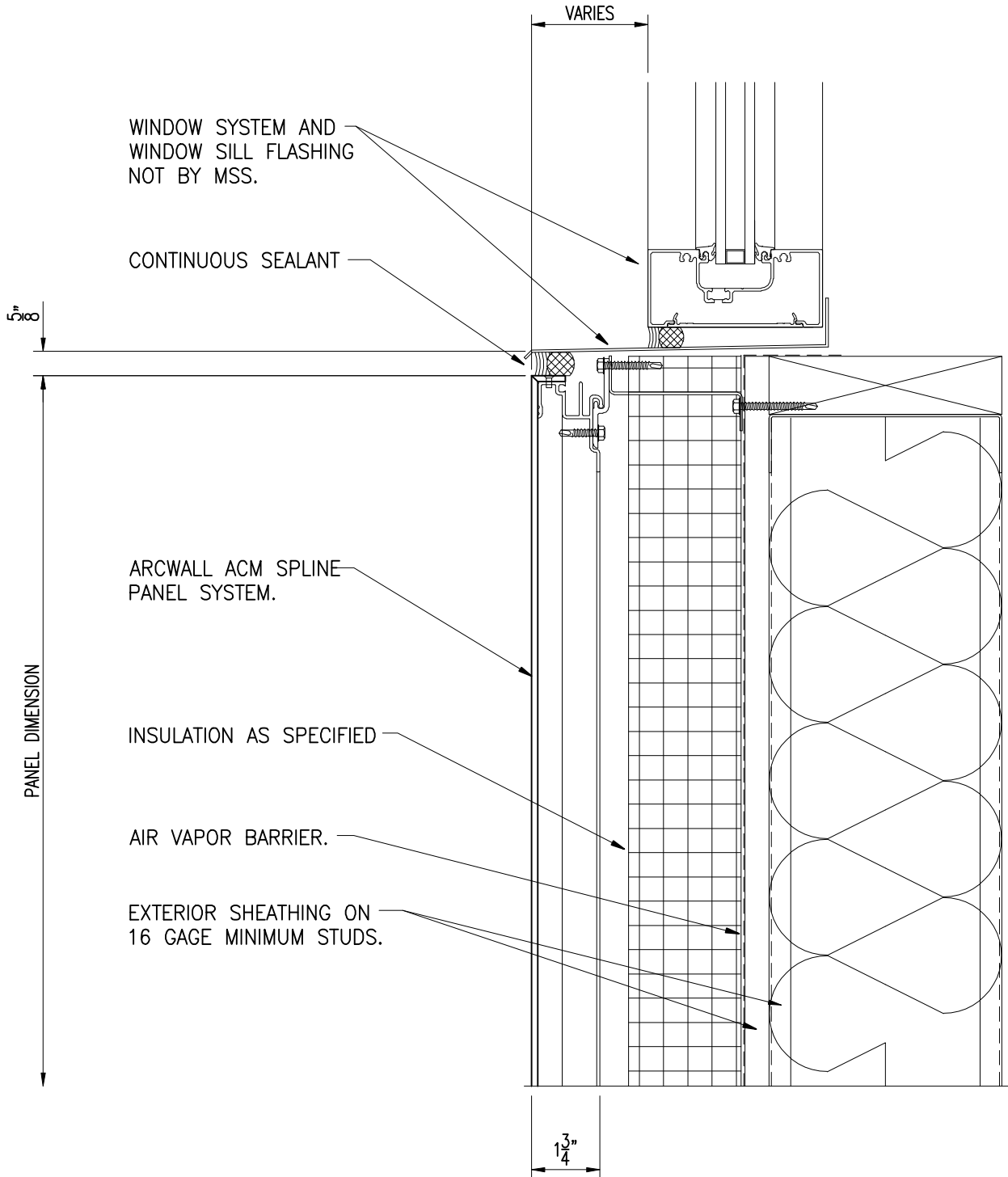
4) Panel Jamb



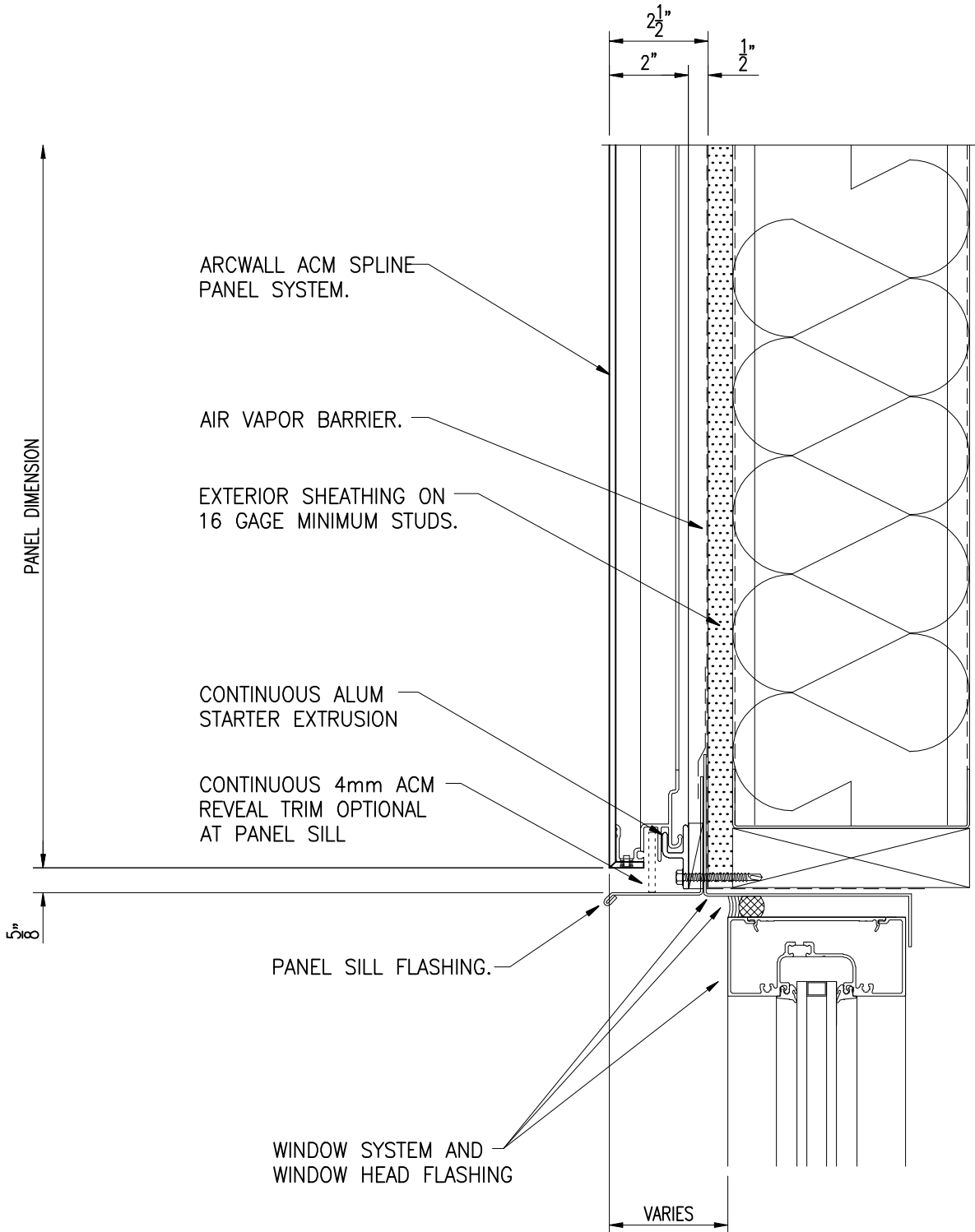
4A) Panel Jamb with Insulation



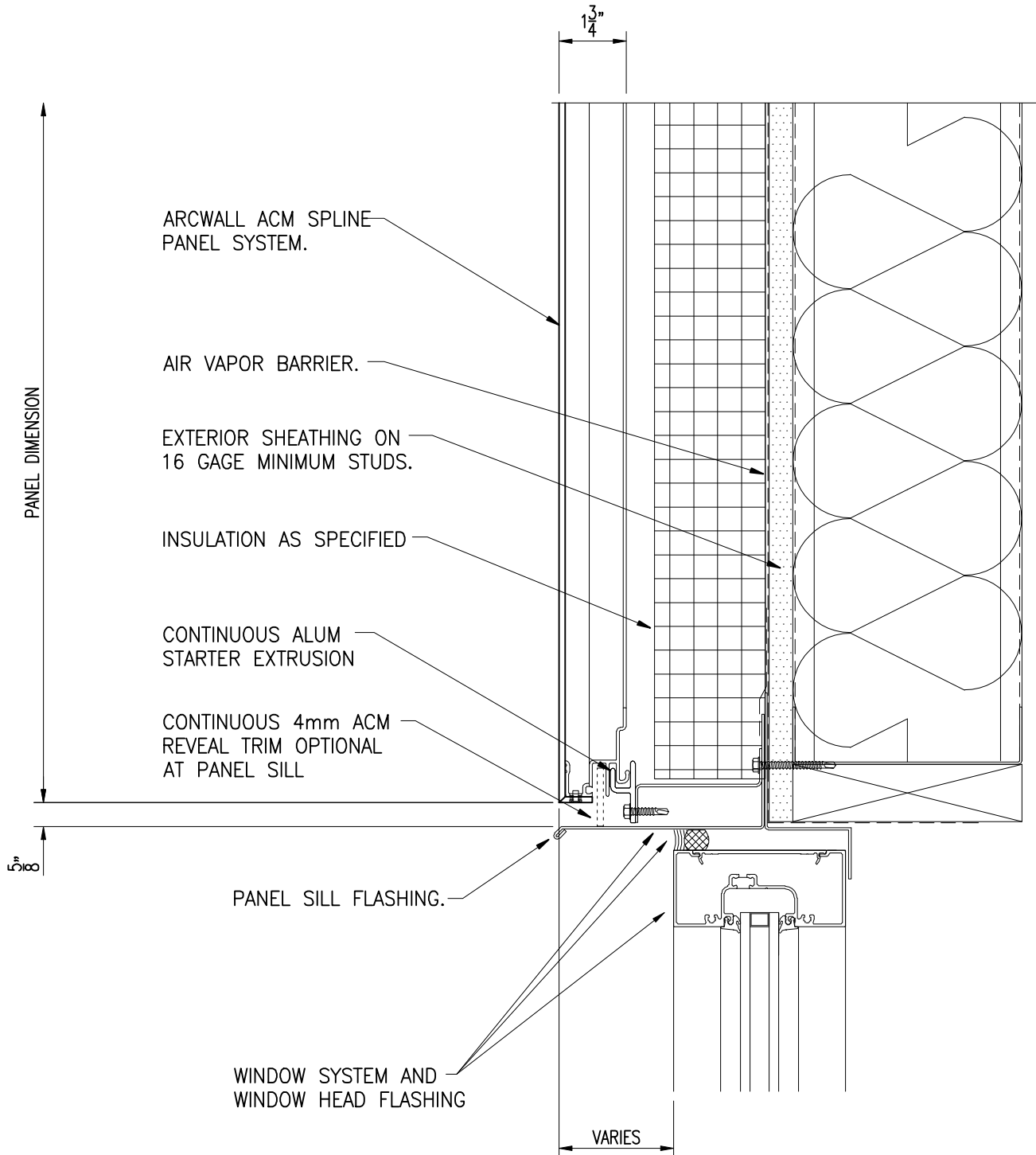
5) Panel Head at Window Sill



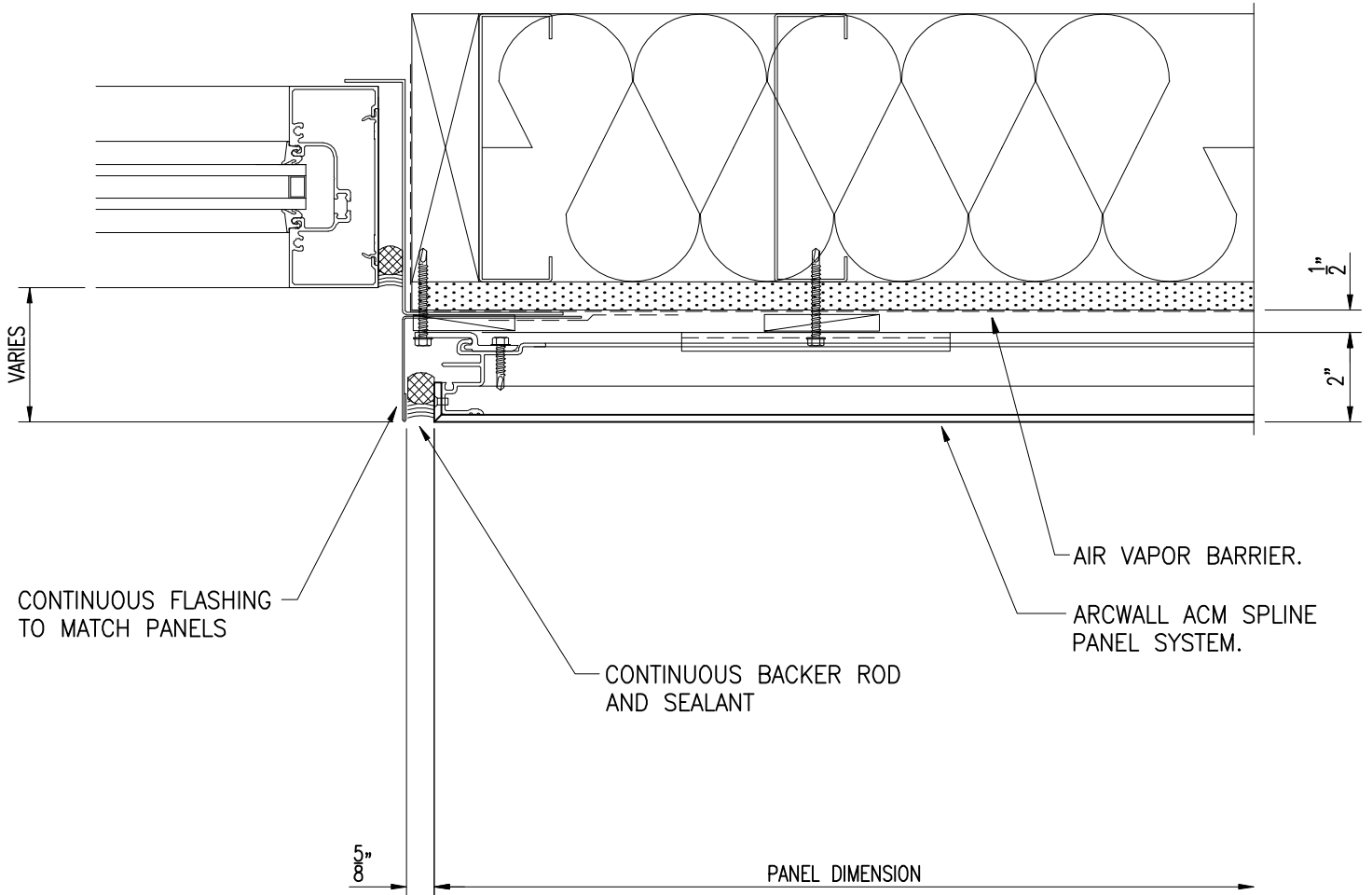
5A) Panel Head with Insulation at Window Sill



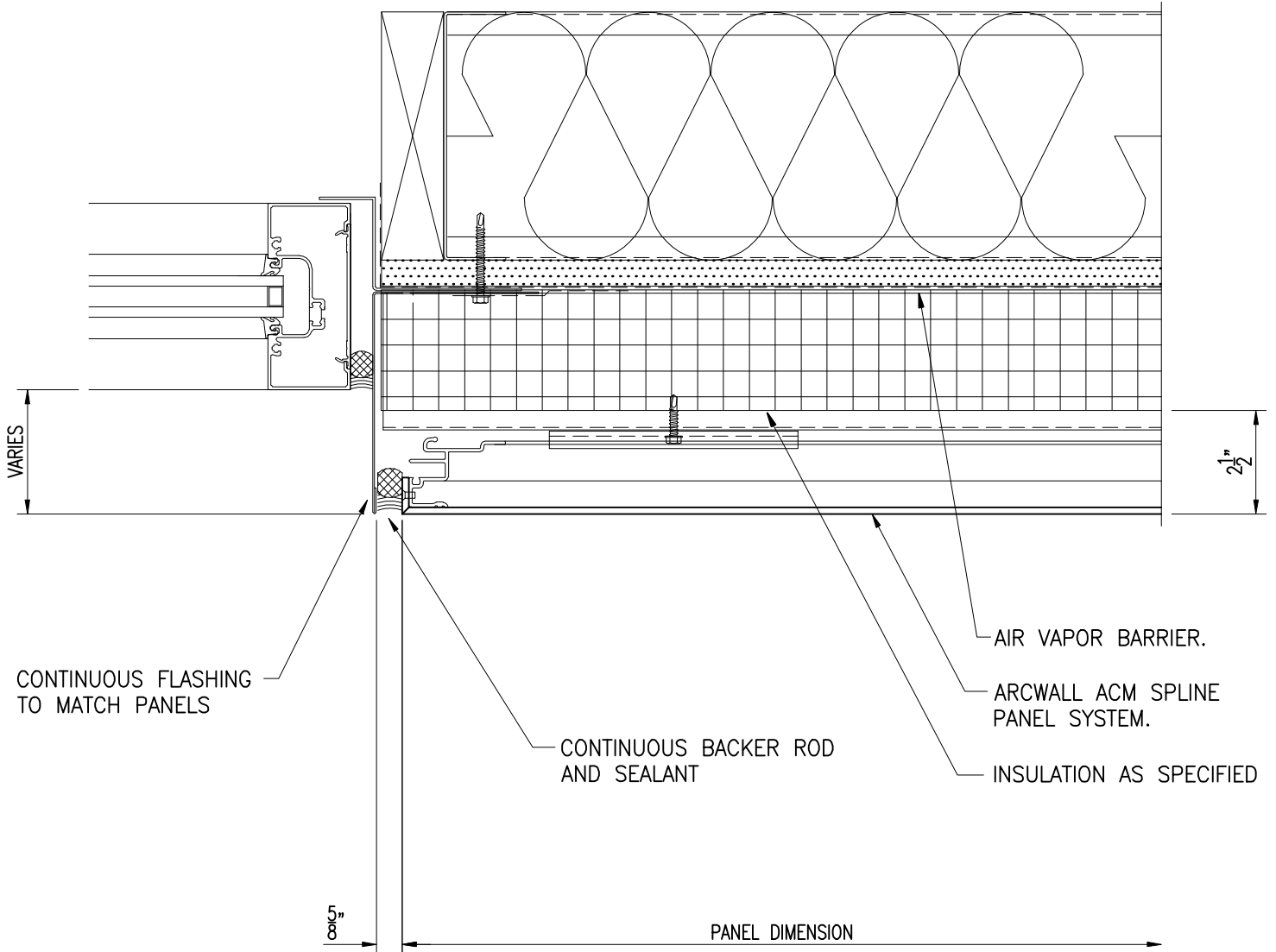
6) Panel Sill at Window Head



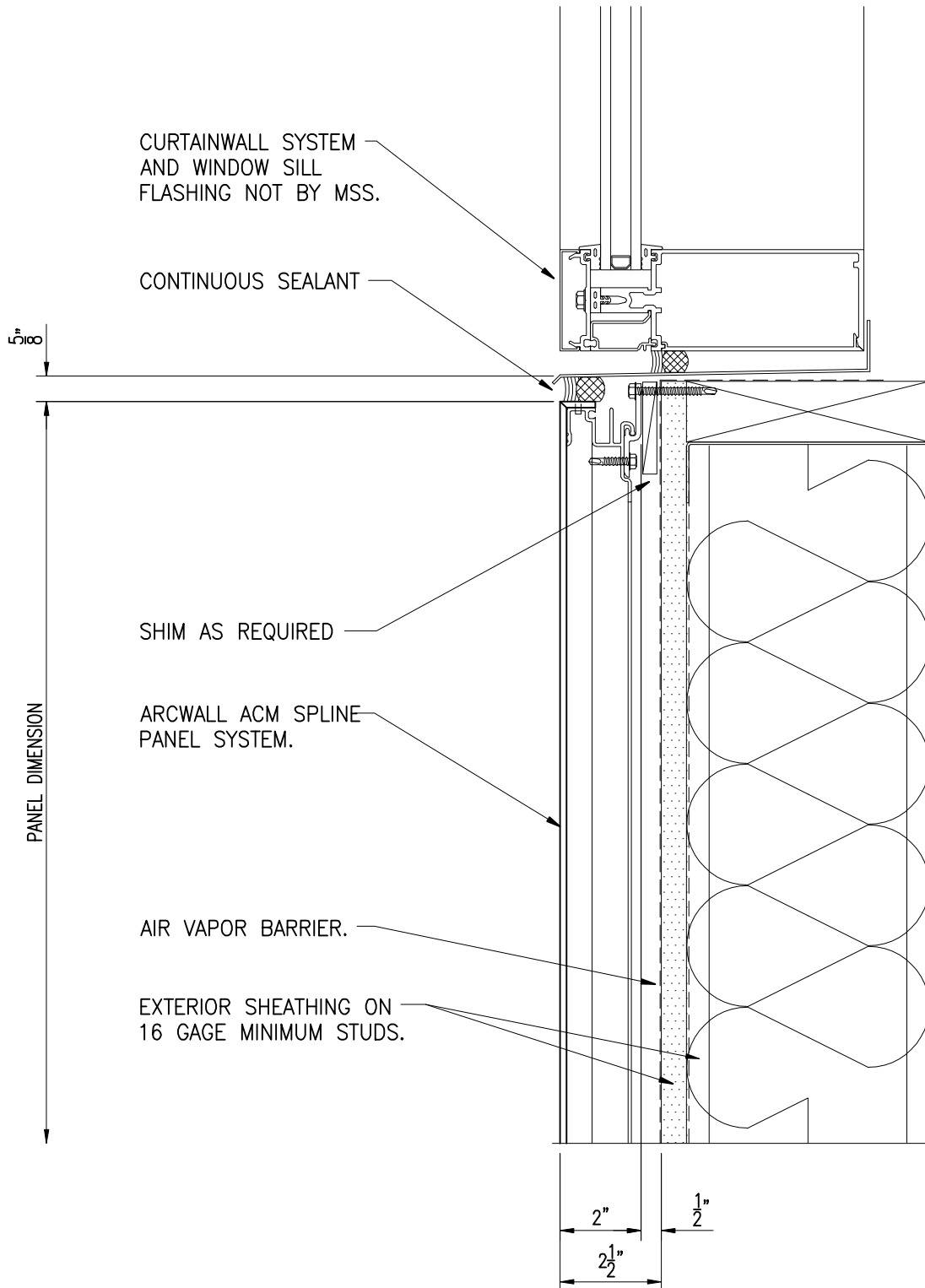
6A) Panel Sill with Insulation at Window Head



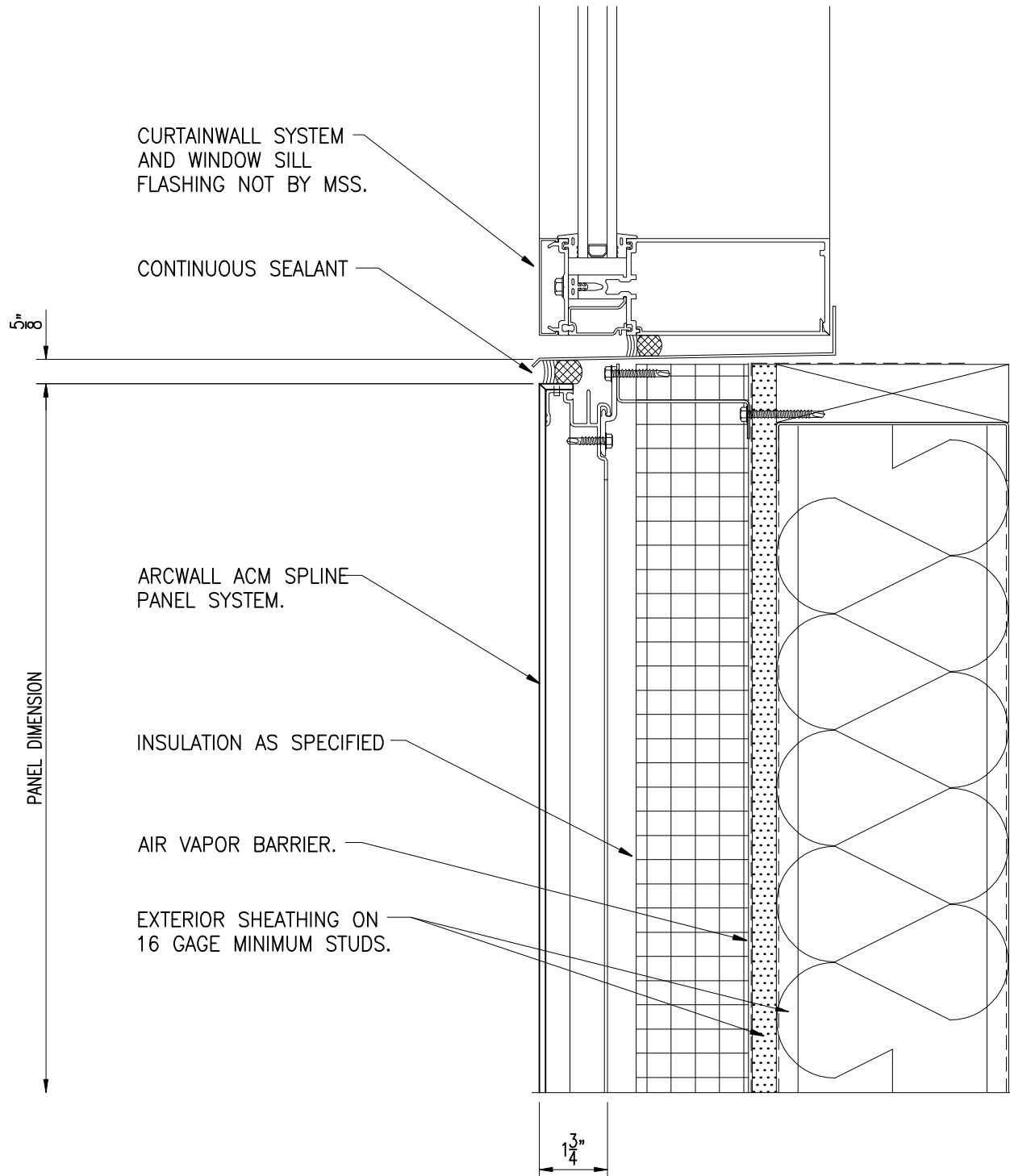
7) Panel Jamb at Window



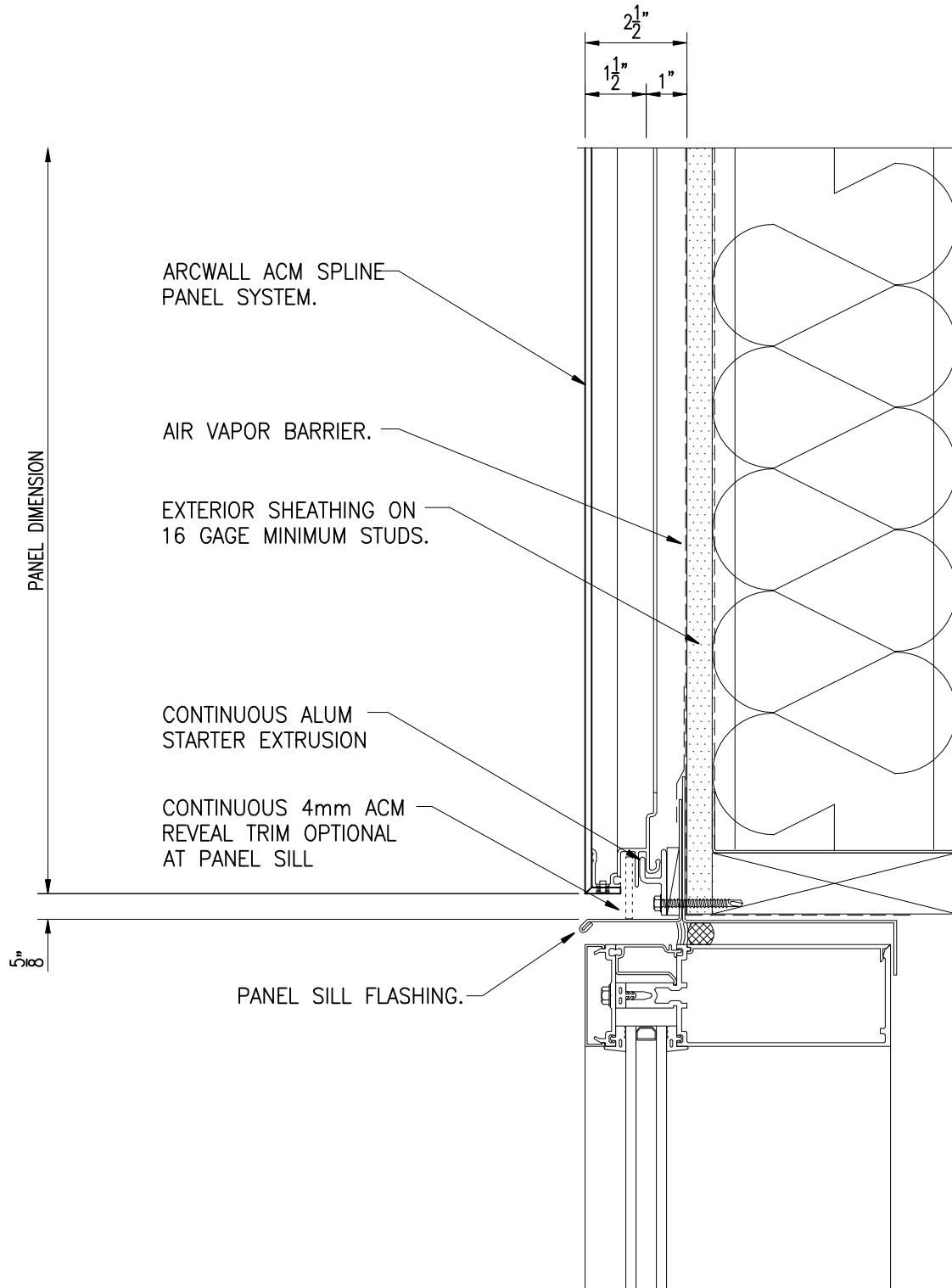
7A) Panel Jamb with Insulation at Window



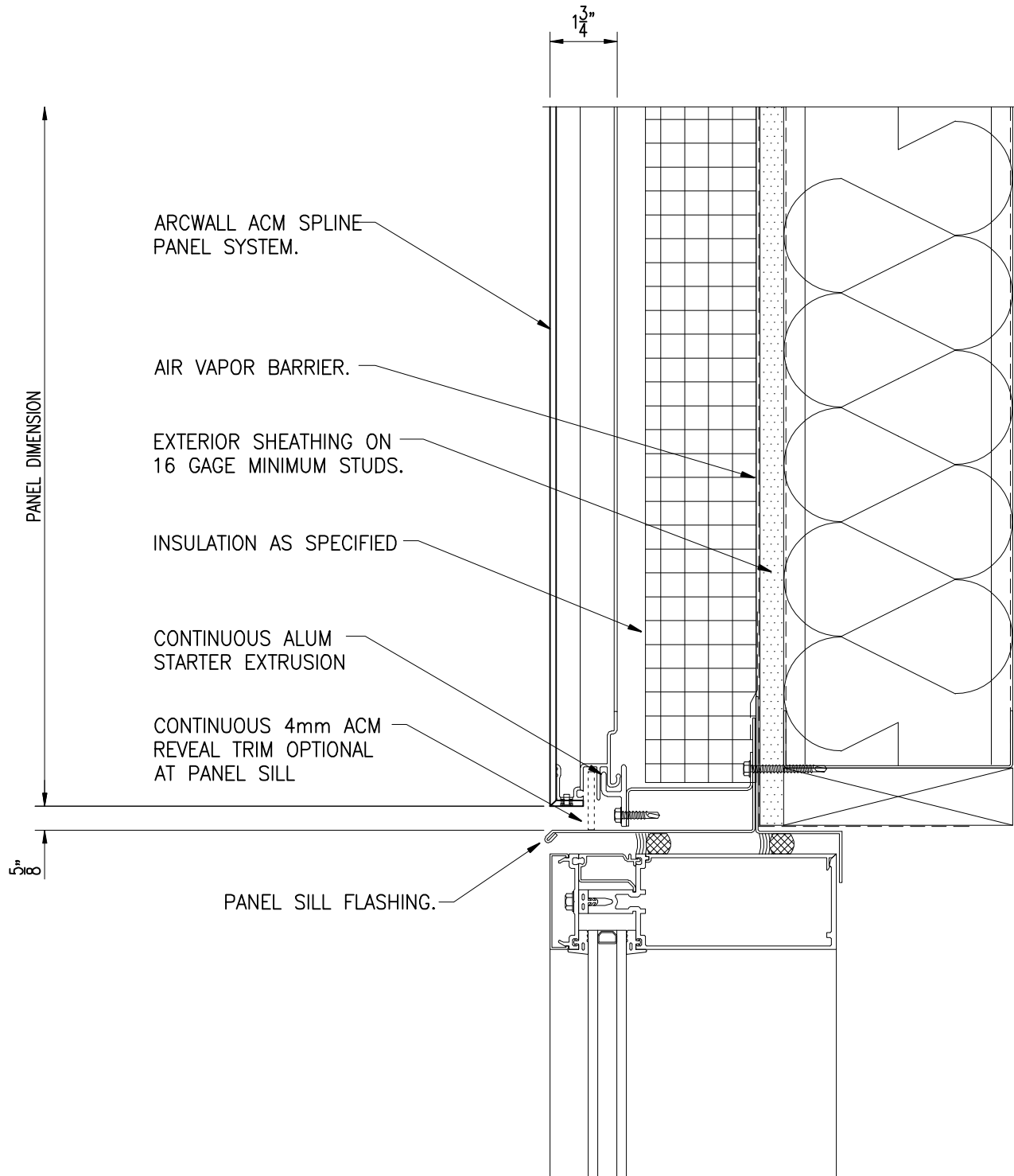
8) Panel Head at Curtainwall Sill



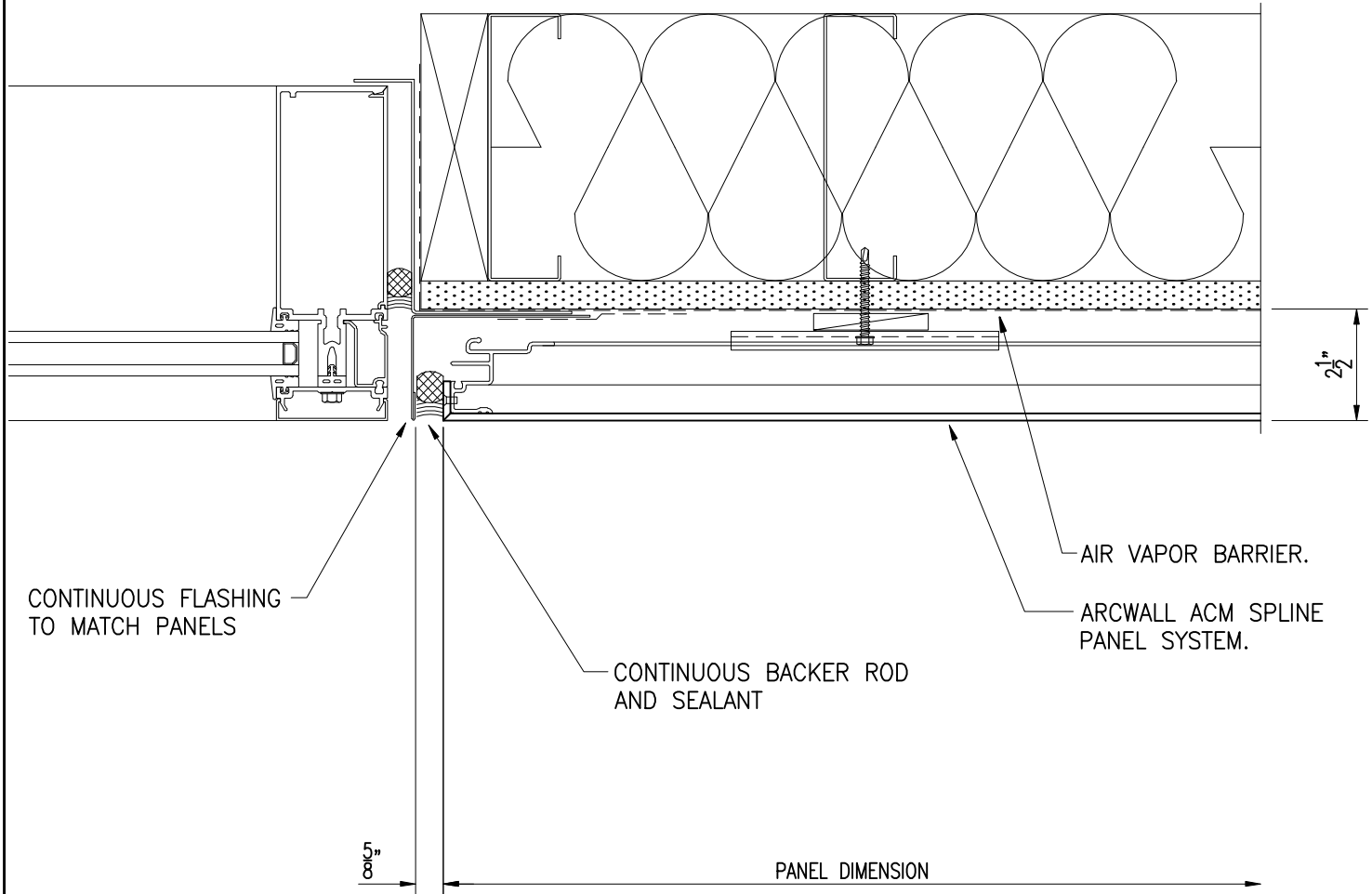
8A) Panel Head with Insulation
at Curtainwall Sill



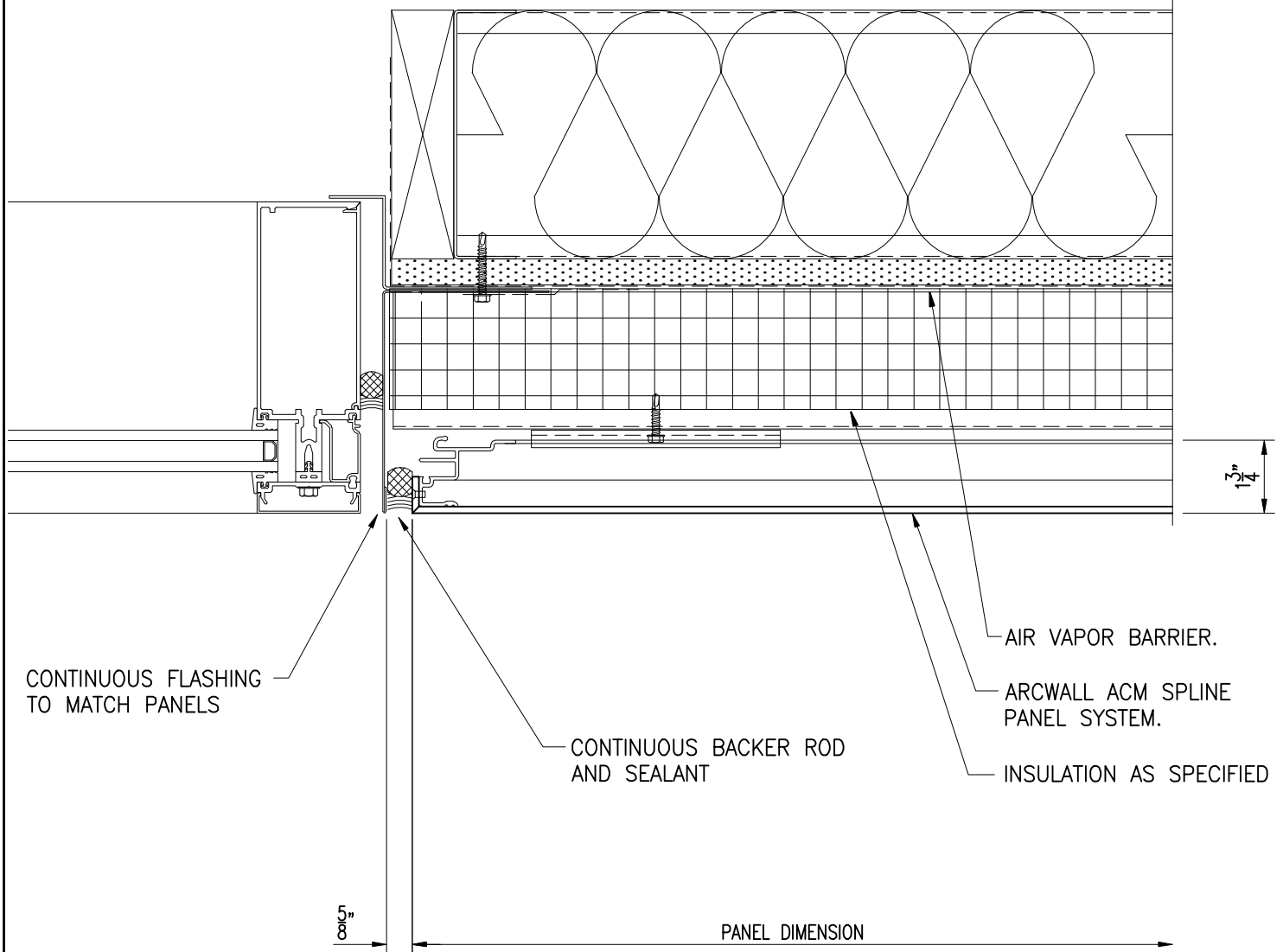
9) Panel Sill at Curtainwall Head



9A) Panel Sill with Insulation at
Curtainwall Head



10) Panel Jamb at Curtainwall



CONTINUOUS FLASHING
TO MATCH PANELS

CONTINUOUS BACKER ROD
AND SEALANT

AIR VAPOR BARRIER.

ARCWALL ACM SPLINE
PANEL SYSTEM.

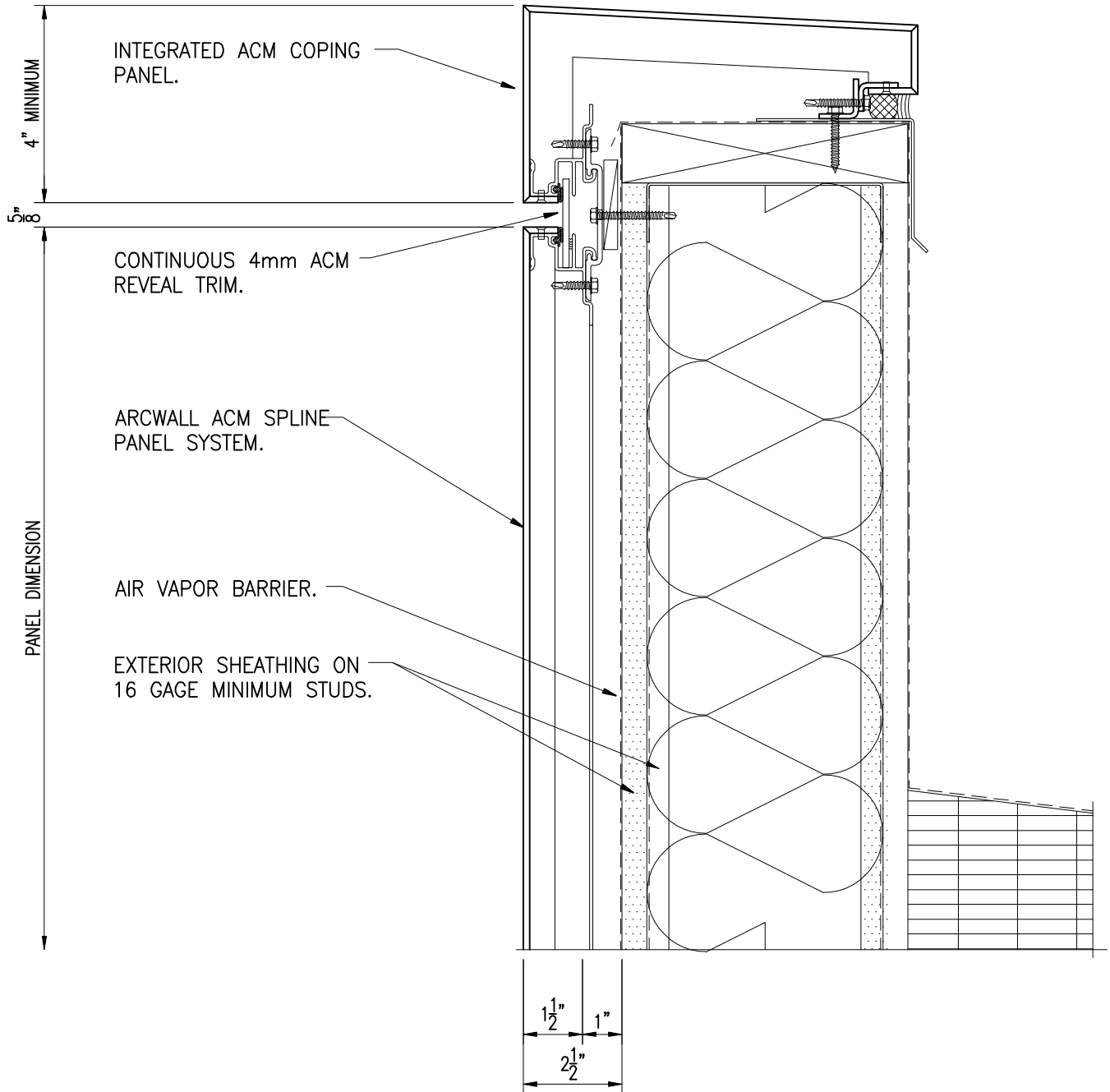
INSULATION AS SPECIFIED

5"

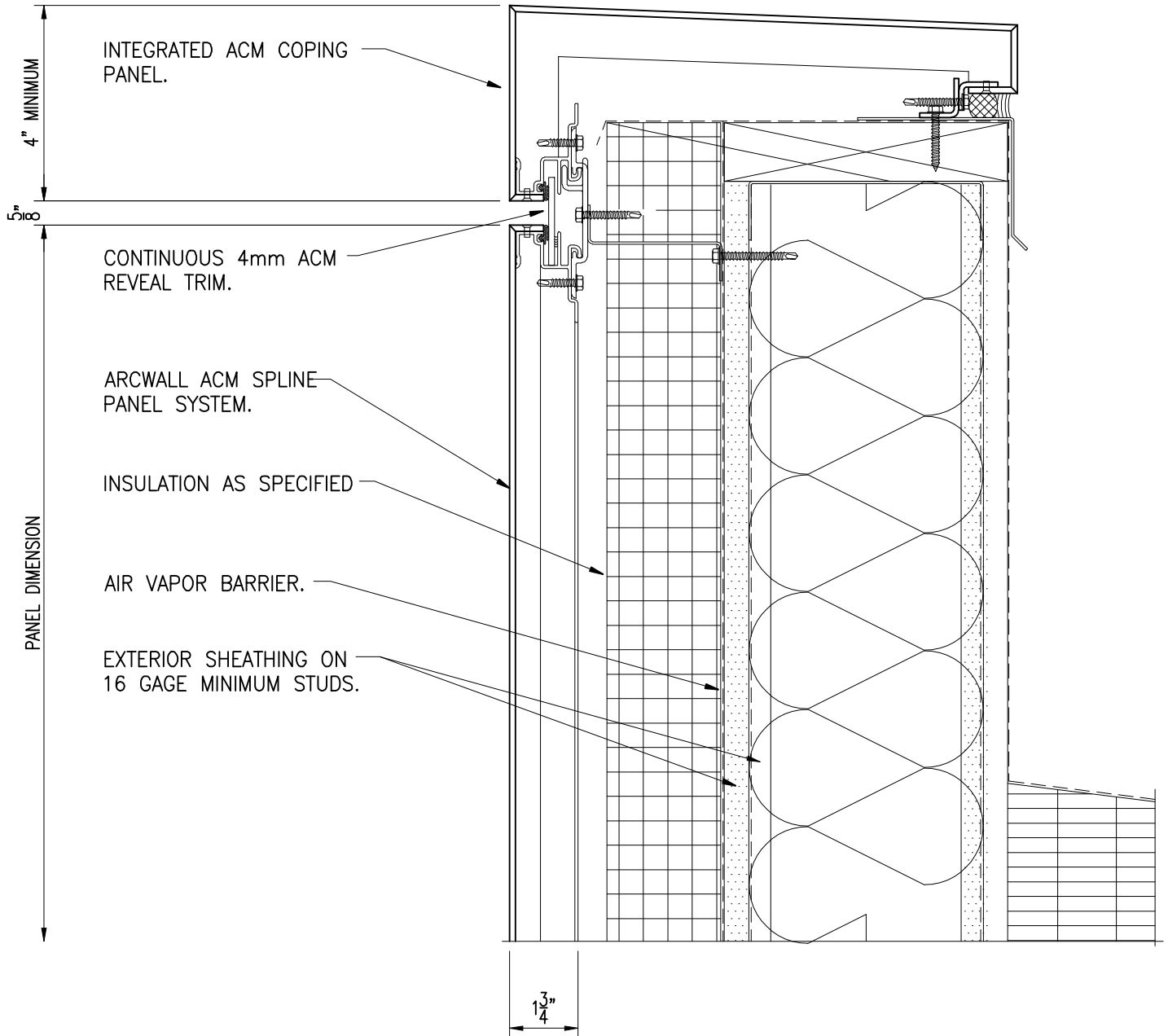
13 1/4"

PANEL DIMENSION

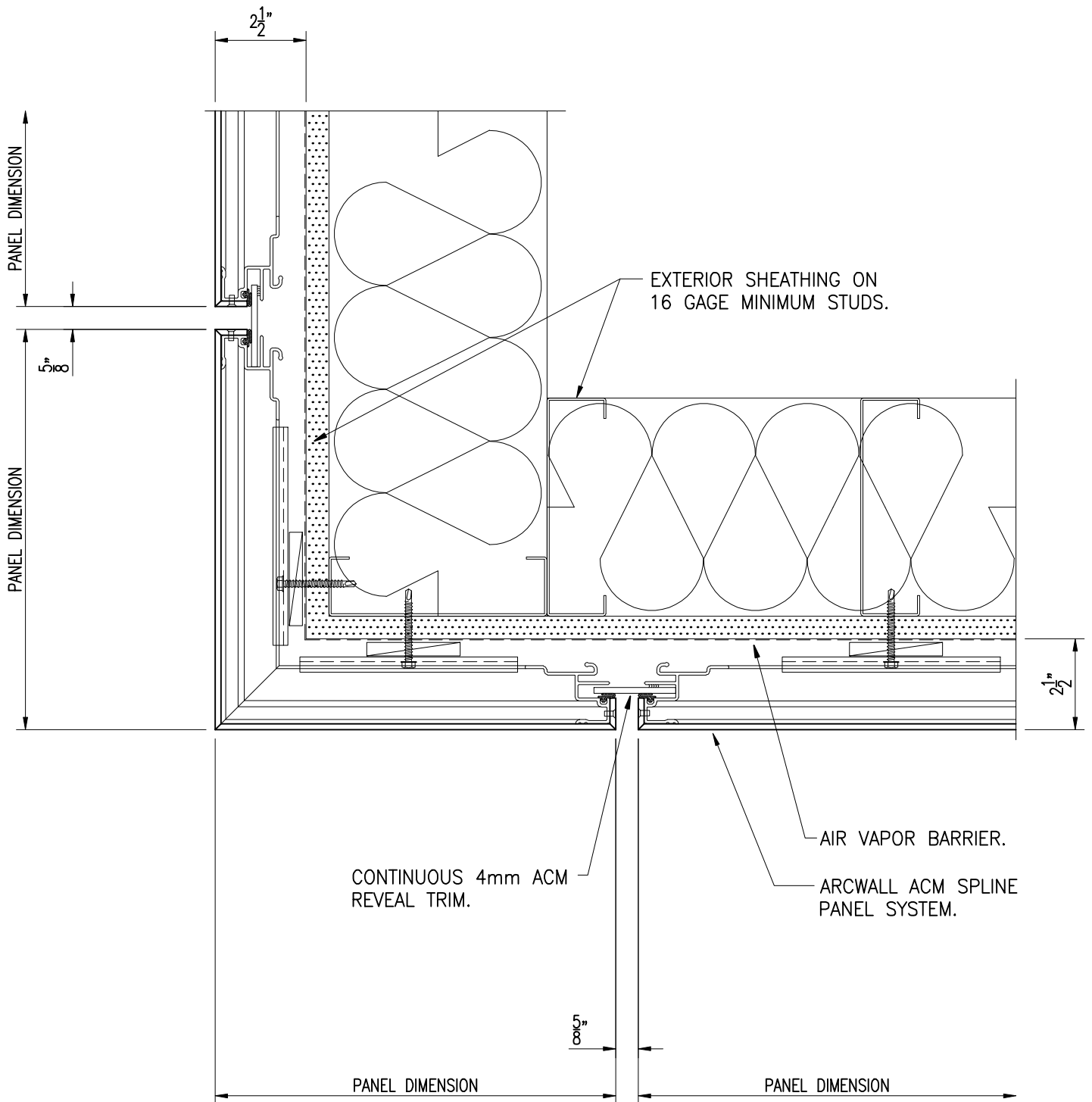
10A) Panel Jamb with Insulation at Curtainwall



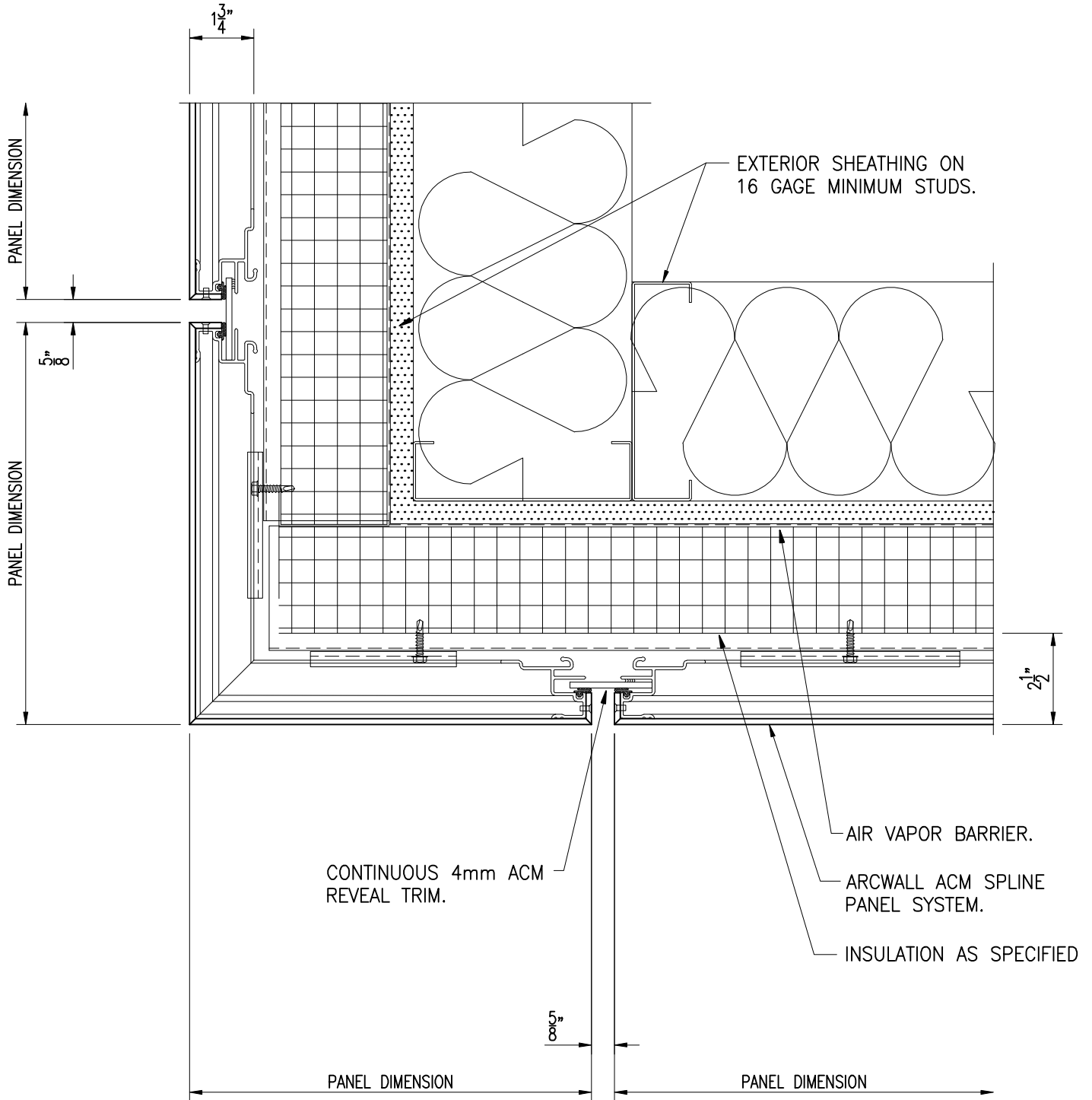
11) Integrated Coping Detail



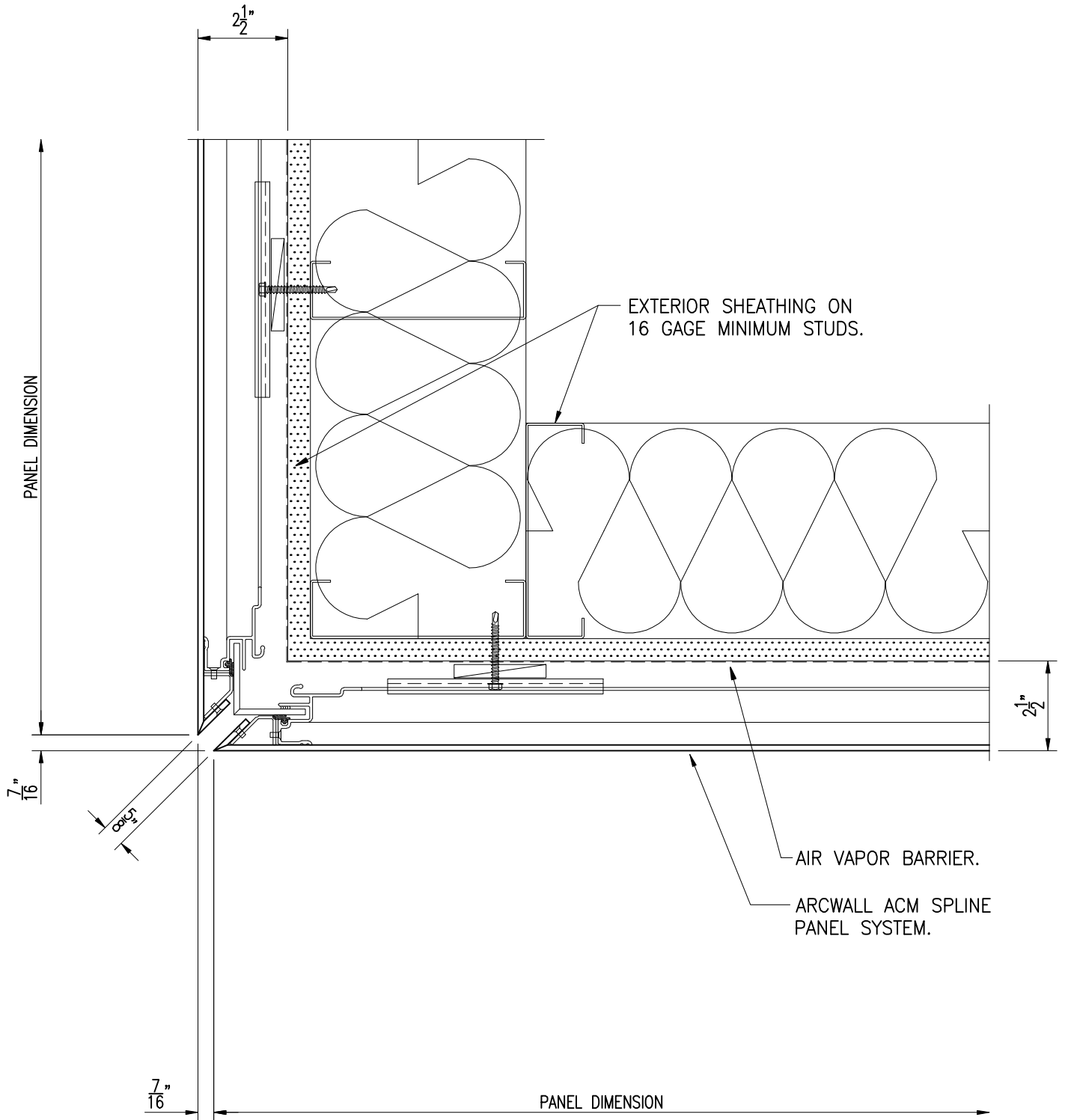
11A) Integrated Coping Detail
with Insulation



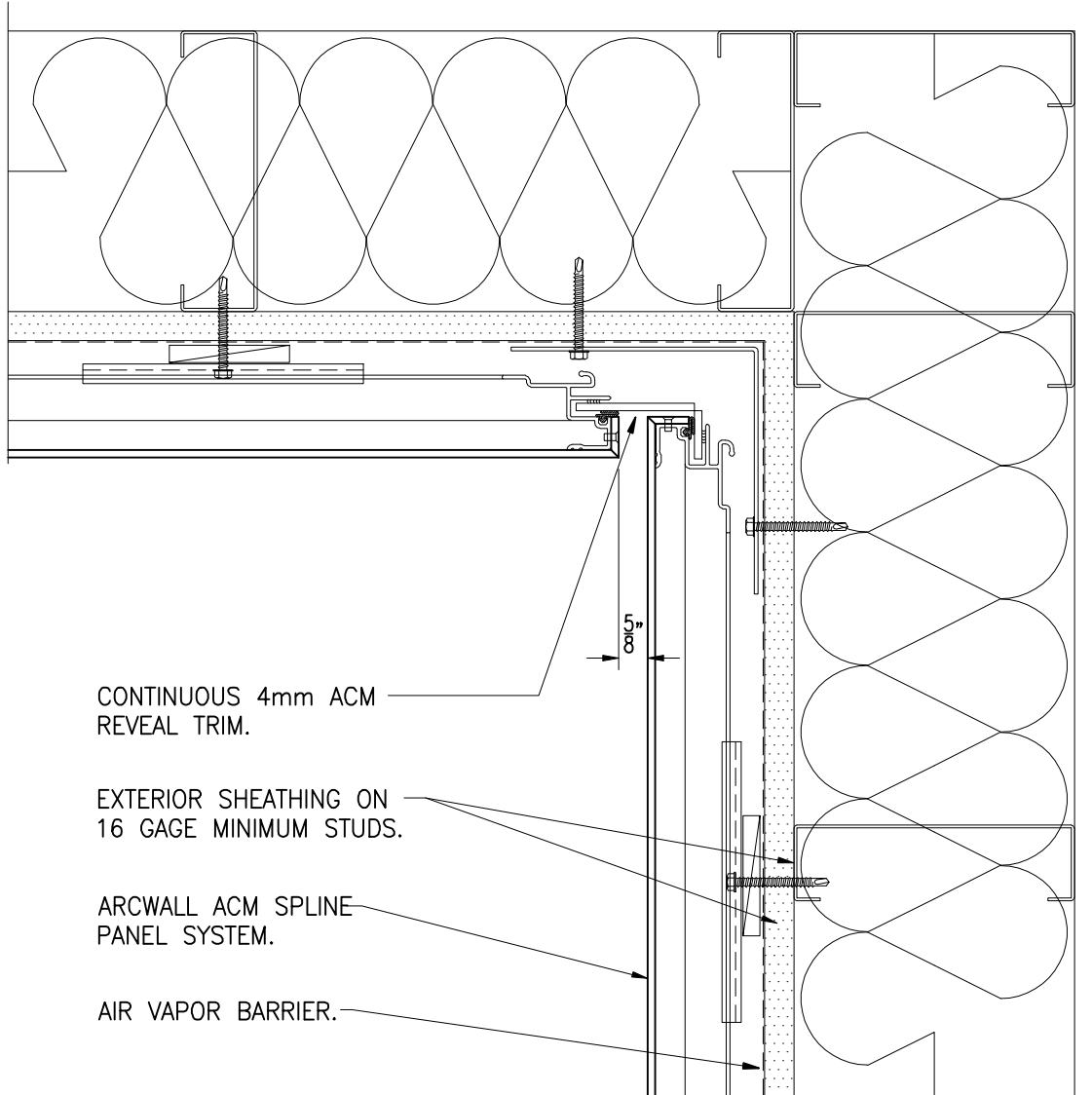
12) Outside Corner Detail



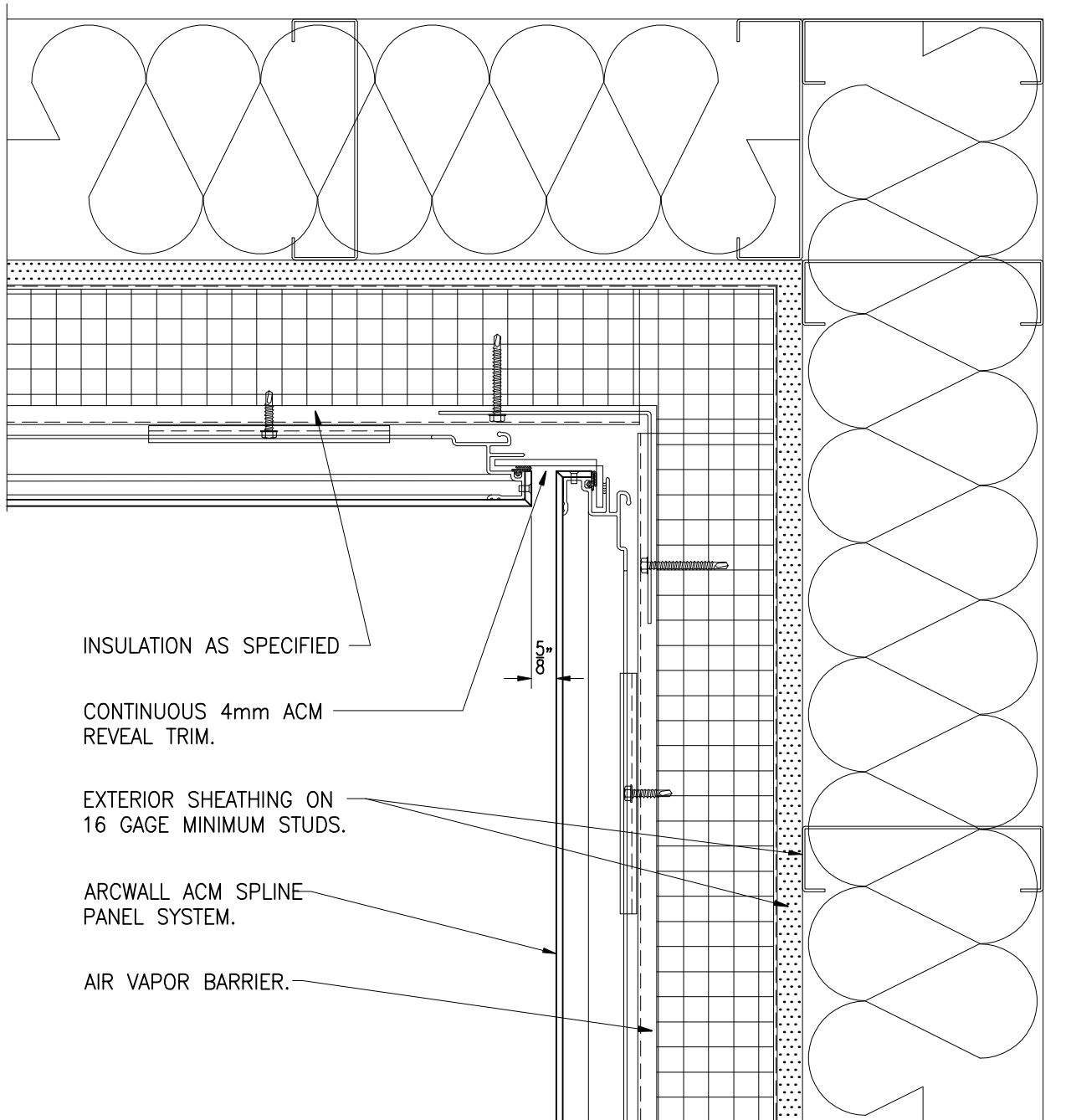
12A) Outside Corner Detail
with Insulation



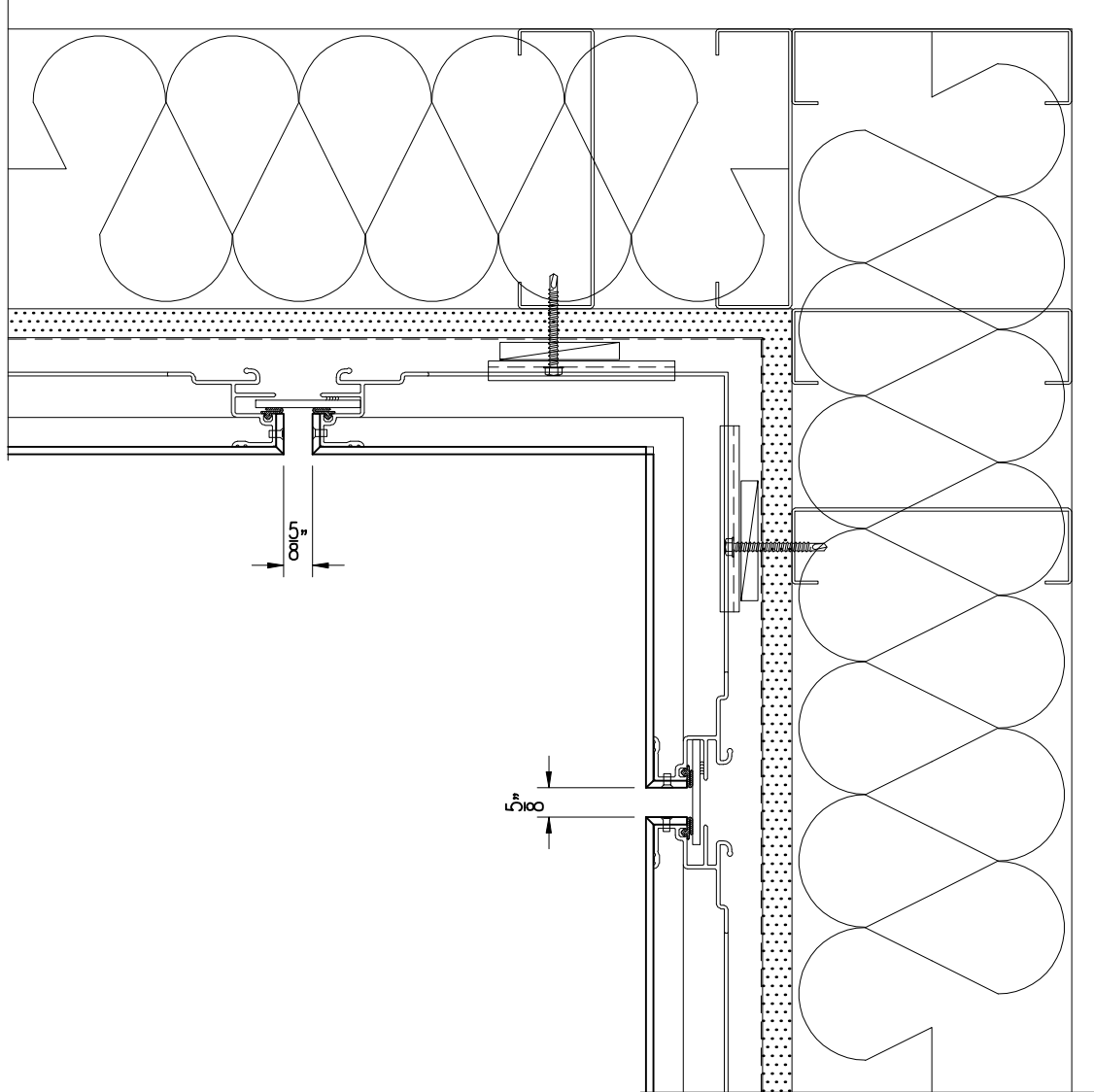
12B) Outside Corner Option



13) Inside Corner Detail



13A) Inside Corner Detail with Insulation



13B) Mitered Inside Corner Option