

Metalwërks[®] Arcwall ACM Spline DBV

ARCWALL ACM SPLINE DBV PRODUCT DESCRIPTION

ArcWall ACM Spline DBV ("Drained, Back Vented") is an economical wall or soffit cladding system whether insulated or un-insulated, it is used for vertical wall or exterior soffit surfaces.

WALLS: When used for walls it is best applied over continuously sheathed or masonry substrates covered with an appropriate air/water barrier. It is a totally "dry-set" panel using no field applied sealants.

Panel units: Standard panel is 2.0" nominal depth however deeper panels are available to create custom shadow patterns or accent columns/floor lines. Panels are back-routed on CNC programmable router tables with accuracy down to .040".

FEATURES AND BENEFITS:

- ⊕ **Panel frame:** extruded aluminum perimeter frame is continuous around the perimeter of each panel and mechanically assembled using SS fasteners. Panel frame is available with gasketed seals for added weather protection.
- ⊕ **Panel rail or clip:** Panels are attached to the building using an extruded aluminum clip which mates with the panel frame. Clips can be either continuous rail or intermittent at attachment points based on your project's performance requirements.
- ⊕ **Panel Joints:** Interlocking joints are filled with an aluminum spline made from matching or contrasting finished materials. Joint widths are variable from ½" nominal to 2" standards. Other joint reveals can be custom designed for your project.
- ⊕ **Thermal Expansion:** This design allows for thermal expansion and contraction both vertically and horizontally.
- ⊕ **Stiffeners:** Extruded aluminum I-beam stiffeners are factory assembled into each panel

to maintain rigidity, flatness and resist deflection per your project's design criteria.

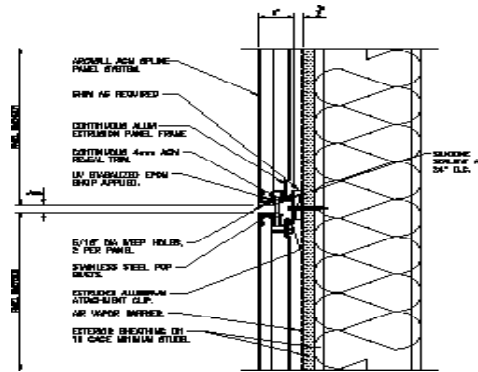
- ⊕ **Furring:** Optional 1 piece zee, hat furring or 2-piece furring for adjustment to adjacent construction. Additional space is adjustable to provide a continuous insulation layer. Consult for system depth adjustments based on preferred insulation and R value.

PRODUCT APPLICATIONS:

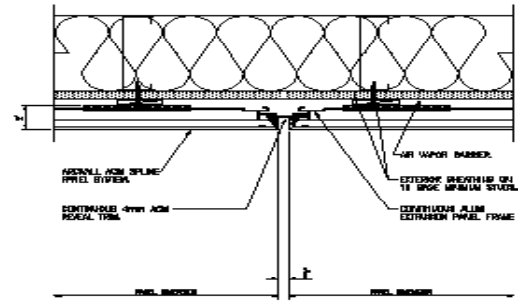
- ⊕ Any standard wall surface application, whether interior or exterior.
- ⊕ Rain screen walls installed over conditioned spaces applied over continuously sheathed or masonry substrates covered with an appropriate weather resistant air/water barrier.
- ⊕ Decorative cladding: install over open framing to clad un-conditioned spaces such as fascia, soffit, canopy or screen wall applications.
- ⊕ Soffits: When used as an exterior soffit, the panels can be installed over an open grid of framing and furring designed to resist the positive and negative loads imposed. Perforated for venting or solid soffit applications.

Metalwërks® Arcwall ACM Spline DBV

HORIZONTAL JOINT



VERTICAL JOINT



ARCWALL ACM SPLINE DBV APPLICATIONS

Basic Use: Arcwall Interlok Plank panel is used as an uninsulated or insulated exterior cladding system for applications on any vertical or soffit surface as a Rainscreen barrier over a variety of substrates on any commercial application.

COMPOSITION & MATERIALS:

- ⊕ Aluminum Composite Materials manufactured by the top suppliers in the US:
Alpolic as manufactured by Mitsubishi Plastics Composites America
Reynobond as manufactured by Alco Architectural Systems
Alucobond by 3A Composites.
Larson by Alucoil.
- ⊕ 4mm thick (0.158") Aluminum Composite Material made up of an interior and exterior skin of 0.020" thick coated aluminum sheets chemically bonded to a PE or FR Core.
- ⊕ 6mm thick (.236") aluminum composite material made up of an interior and exterior skin of 0.020" thick coated aluminum sheets chemically bonded to a PE or FR Core.
- ⊕ Zinc Composite Panels available. Consult with Metalwërks® for finish options.
- ⊕ Paint finishes available in 2 coat or 3 coat Kynar 500 / Hylar 500 finishes.
- ⊕ Core available in Polyethylene core (PE) or Fire Resistant Polymeric (FR).
- ⊕ Aluminum Skin 0.020" thick 3105 H-14 Alloy

SIZES:

ACM sheets are produced by the major suppliers in sheets up to 62" wide therefore in order to allow for a return edge for panel assemblies.

- ⊕ Width: maximum panel width (short dimension either horizontally or vertically applied) is 60".
- ⊕ Length: We recommend a max panel length of 192" for ease of handling and fabrication.

SHAPES OR PROFILES:

- ⊕ Panels are typically flat but can be easily formed to custom profiles as indicated on drawings for any vertical or horizontal surface.
- ⊕ Available with reveals, articulations, wide variety of profile capabilities

ACCESSORIES:

- ⊕ Flashing: metal flashing which may be required at base or penetration conditions produced in the same material finish as the panel system
- ⊕ Perforated Panels or louvered vents for accents, screening or ventilation from solid metal. Consult with Metalwërks® for options.
- ⊕ Furring: optional 1 piece zee or hat furring or 2-piece furring for adjustment to adjacent construction.
- ⊕ Coping: Wall copings may be produced with the same material as the wall panel system unless otherwise noted.
- ⊕ Furring channels – as required for proper mounting of panels and optional insulation in 16 ga. minimum thickness.
- ⊕ Fasteners: Type 304 Stainless Steel or Cadmium plated as recommended for specific application.

TECHNICAL INFORMATION:

- ⊕ ASTM B 209 Standard Specification for Aluminum and Aluminum-Alloy Sheet and Steel.
- ⊕ AAMA 605.2 Voluntary Specification for High Performance Organic Coatings on Architectural Aluminum Extrusions and Panel.

WARRANTY INFORMATION:

- ⊕ Material & Workmanship – Standard – one, two or five year options.
- ⊕ Finish Integrity – Standard – 10 year up to 20 years – consult