

TABLE OF CONTENTS:

Detail 1: Horizontal Joint	Detail 13: Curtain Wall Head
Detail 2: Vertical Joint	Detail 14: Curtain Wall Jamb
Detail 3: Panel Stiffener	Detail 15: Coping
Detail 4: Panel Sill	Detail 16: 90° Exterior Corner
Detail 5: Panel Jamb at Wall	Detail 17: 90° Exterior Corner
Detail 6: Storefront Sill	Detail 18: 90° Interior Corner
Detail 7: Storefront Head	Detail 19: Horizontal Joint with Optional Insulation
Detail 8: Storefront Jamb	Detail 20: Vertical Joint with Optional Insulation
Detail 9: Recessed Storefront Sill	Detail 21: Panel Sill with Optional Insulation
Detail 10: Recessed Storefront Head	Detail 22: Panel Jamb at Wall with Optional Insulation
Detail 11: Recessed Storefront Jamb	
Detail 12: Curtain Wall Sill	

Arcwall PERS Passes AAMA 508–07, Voluntary Test Method and Specification for Pressure Equalized Rain Screen Wall Cladding Systems.

Wall System pressure equalizes in less than .8 seconds.

Minimal amount of water allowed to touch back up wall air/water membrane. Back up wall membrane is tested with holes in it to simulate imperfections which will occur in real world applications.

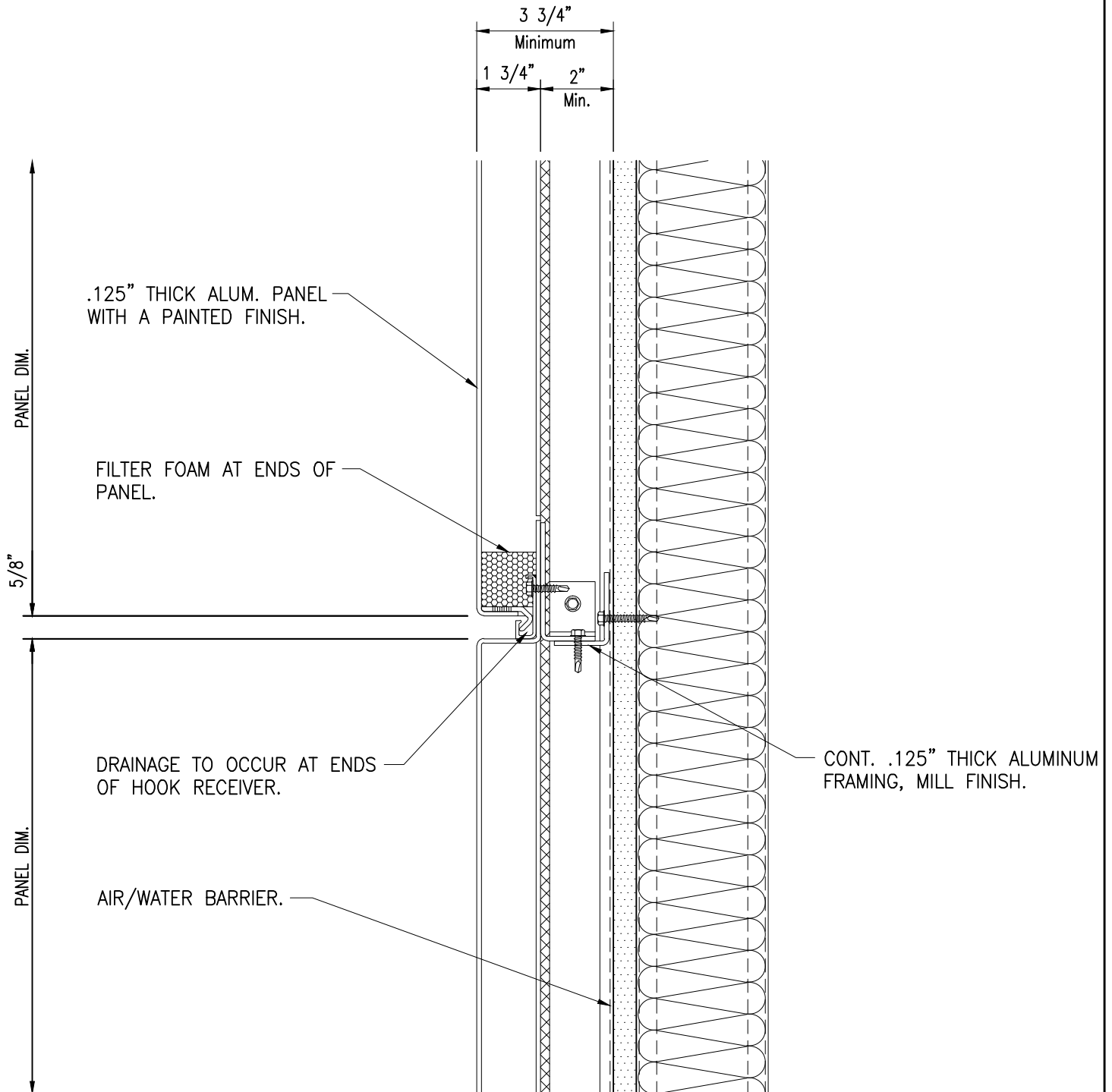
Wall Panels to have fully welded corners for added strength.

Easy installation with continuous Starter Tracks and Posi–Lock "J" shape hooks that allow panels to hinge in place.

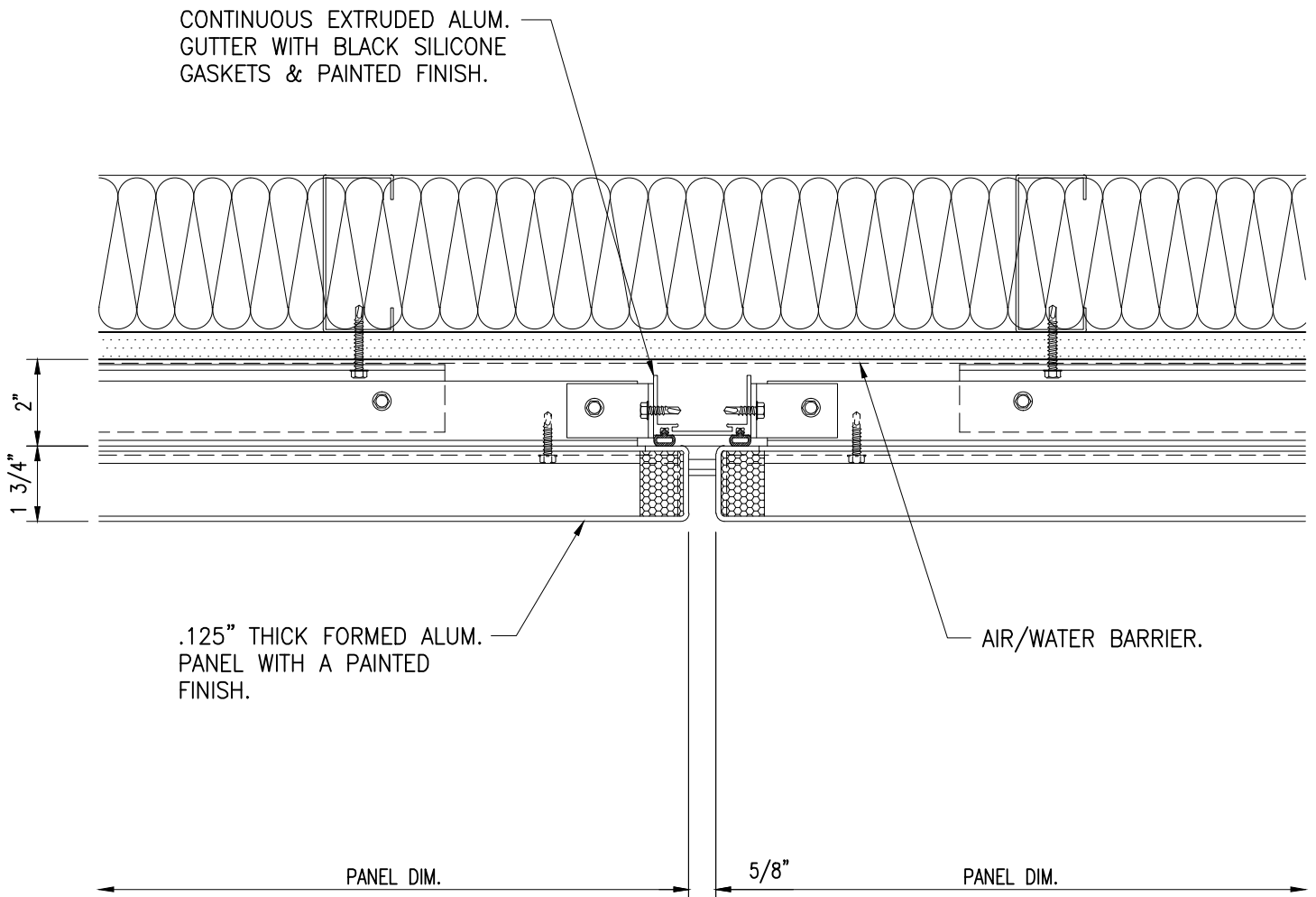
Continuous rigid extruded aluminum Vertical Gutter with integral silicone gaskets. Gutter attaches to framing system which means less penetrations through air/water membrane.

Adjustable aluminum framing or optional stainless steel framing systems eliminates the need for shim packs and allows for proper seals at anchor points through the substrate.

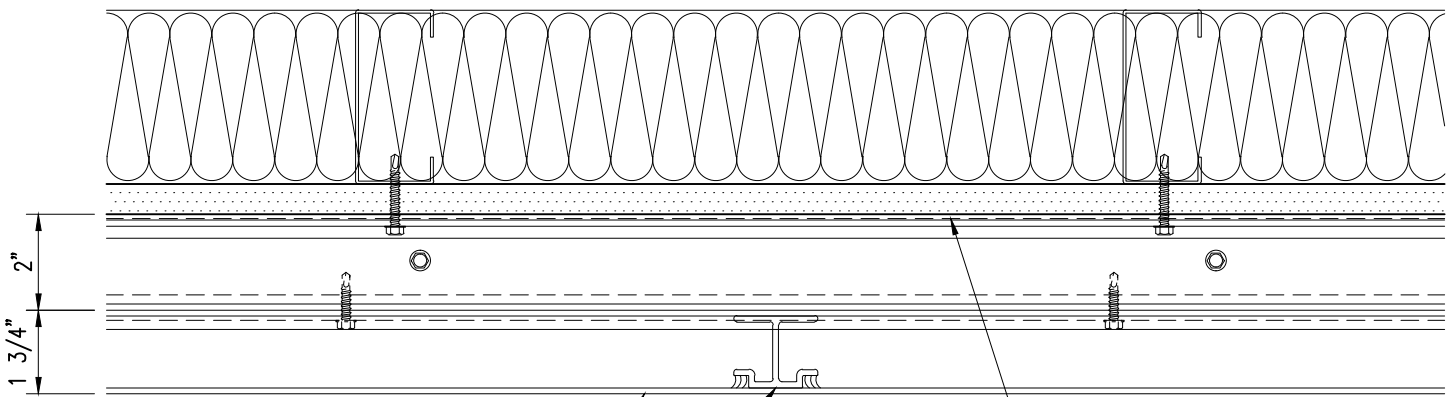
Rain Screen Wall Cladding Systems rely on gravity to drain water out of the wall cavity. All horizontal surfaces to be sealed which include copings, soffits, and sloped conditions. To minimize water penetration, all perimeter conditions to be sealed. Rain Screen Wall Cladding Systems allow air to pass through them mitigating the chance for mold to form. Because of this the air/water membrane (by others) is the primary seal of the building envelope.



1) Horizontal Joint



2) Vertical Joint

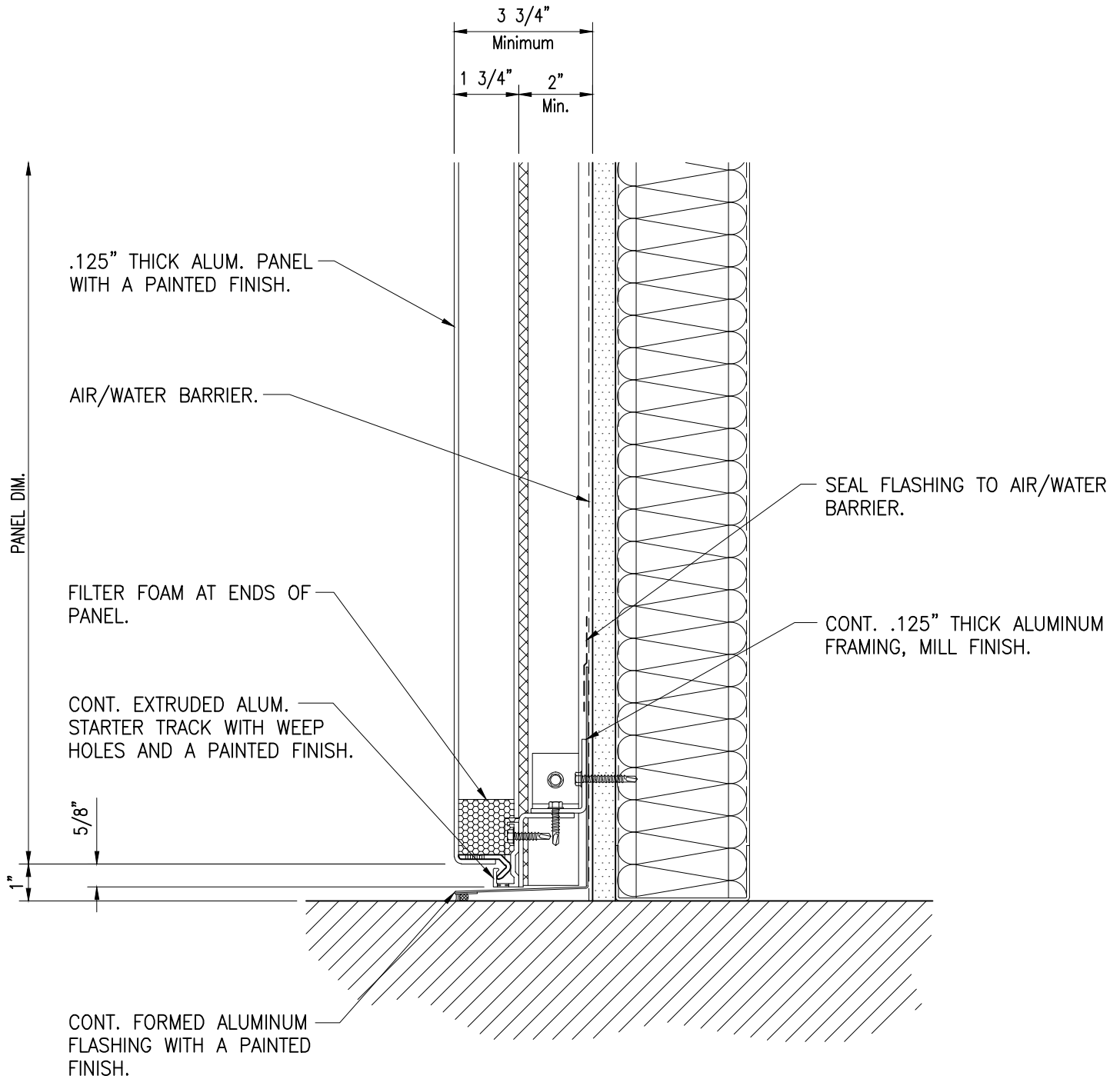


.125" THICK FORMED ALUM. PANEL WITH A PAINTED FINISH.

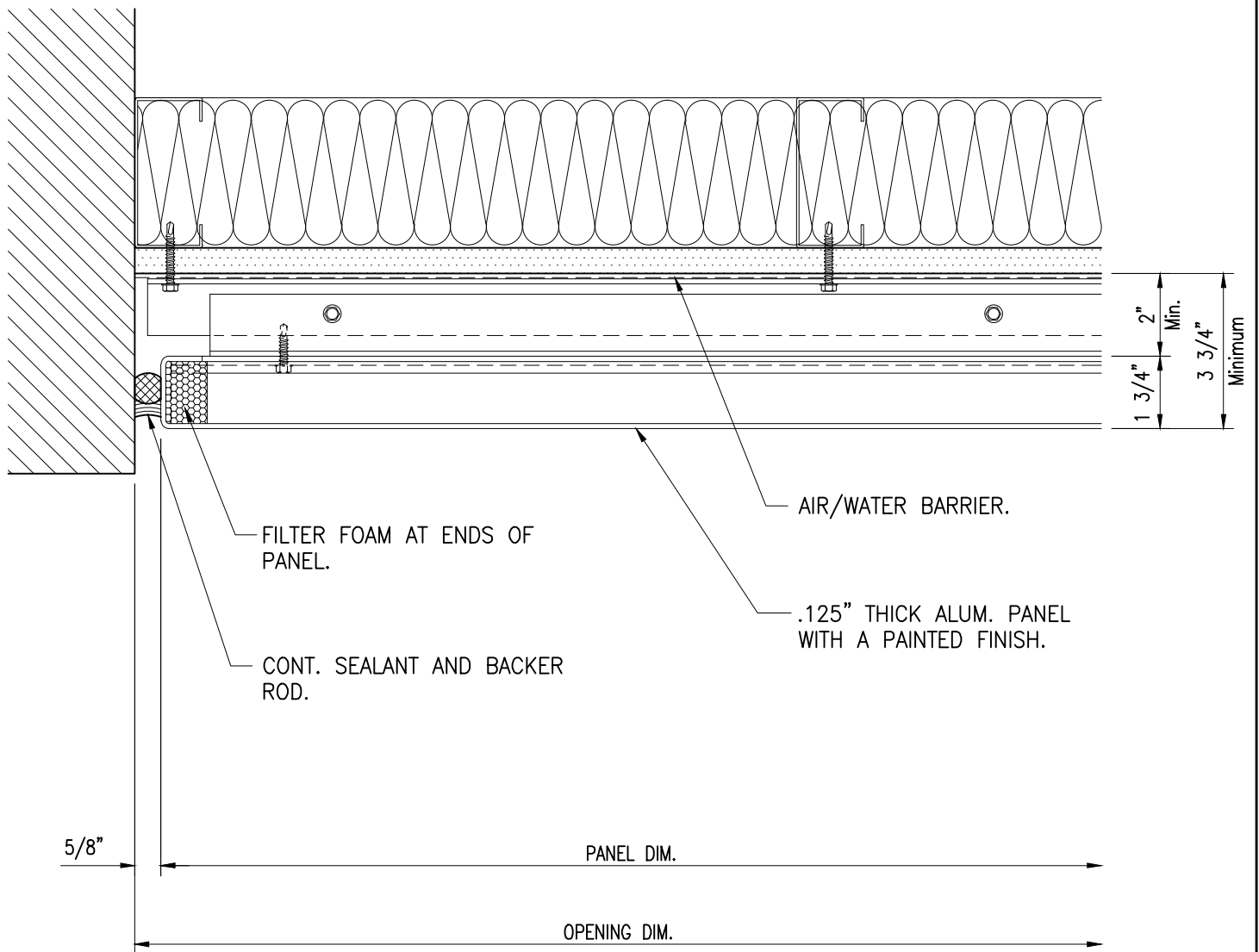
AIR/WATER BARRIER.

EXTRUDED ALUM. STIFFENER SHOP WELD AT ENDS AND SILICONED TO BACK OF PANEL.

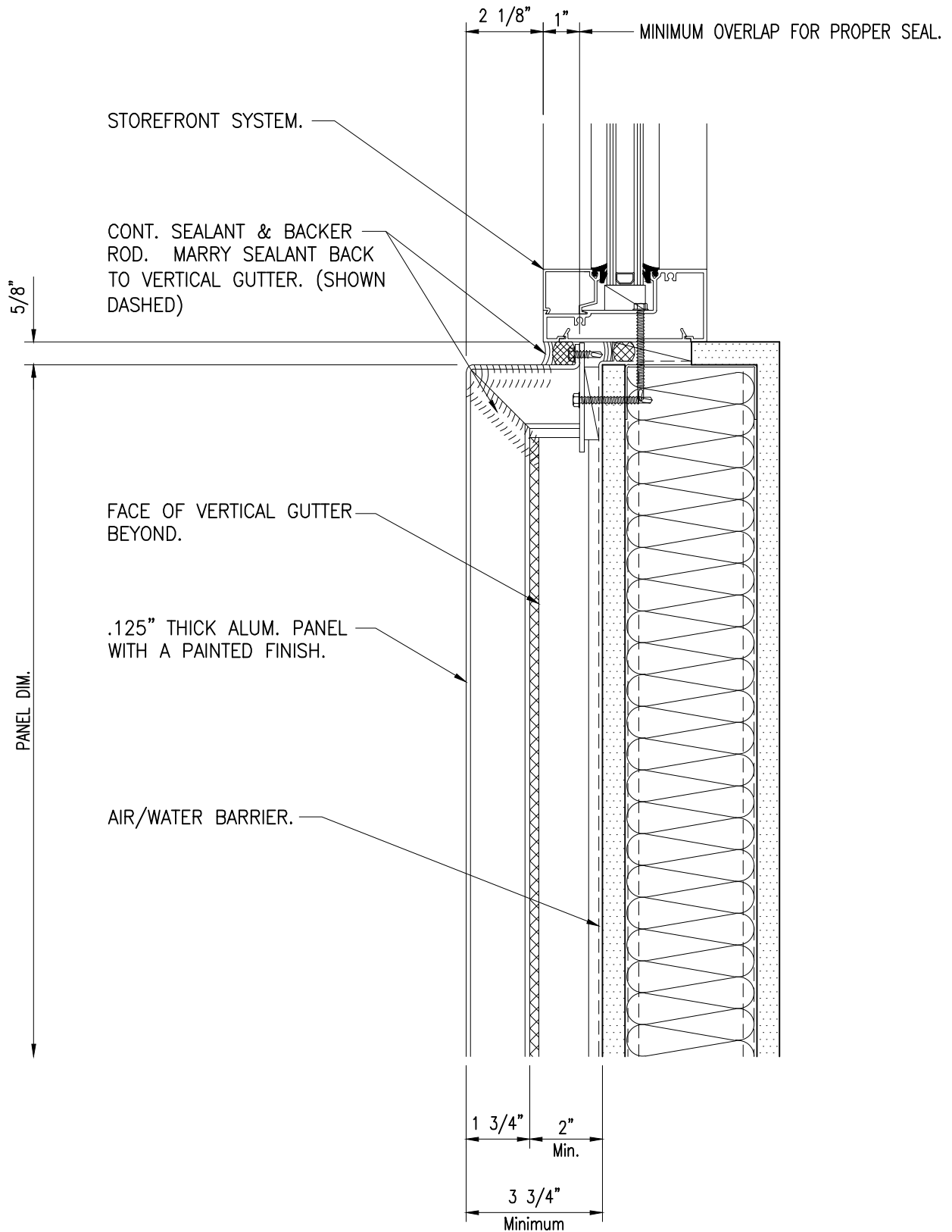
3) Panel Stiffener



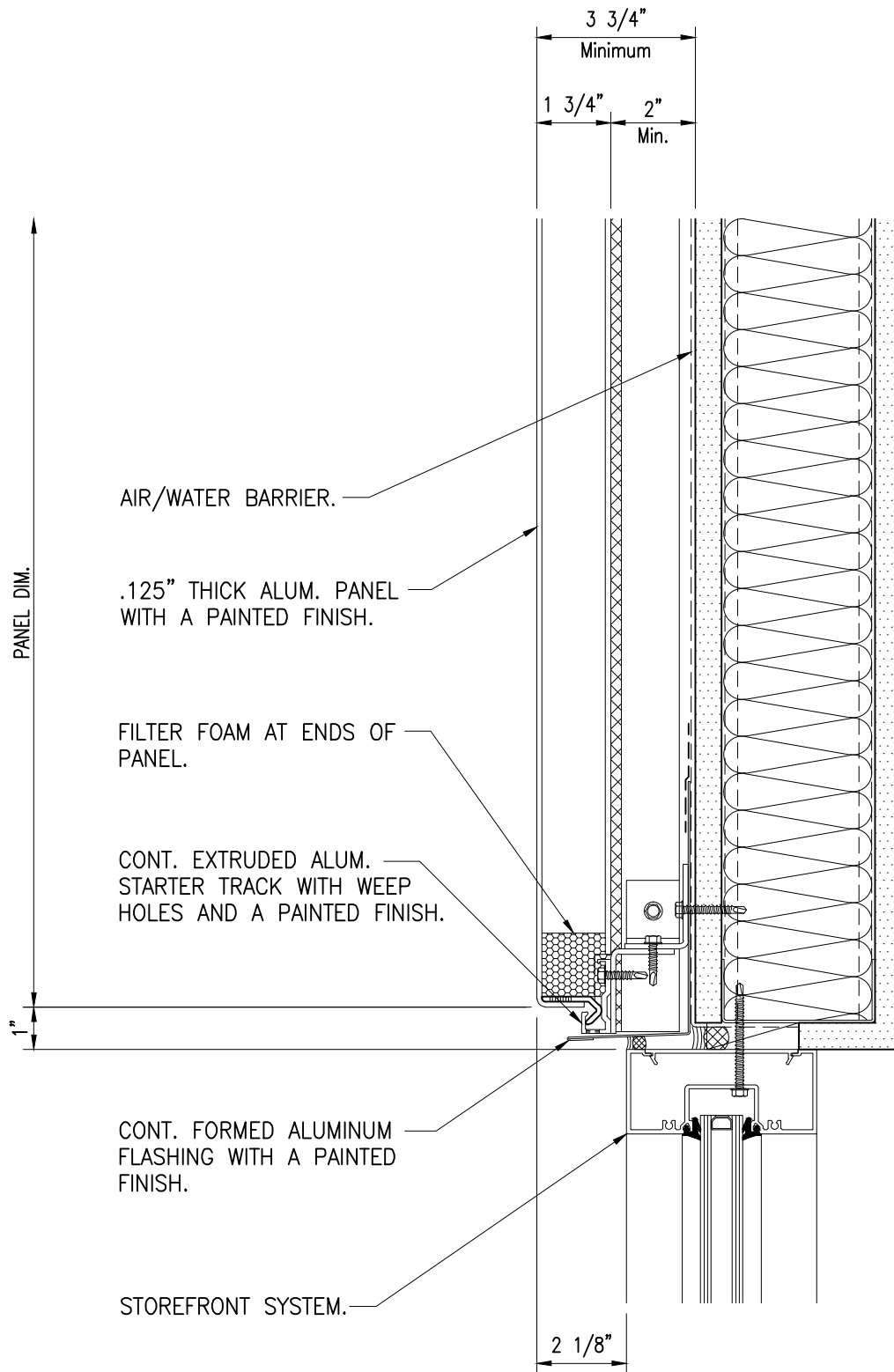
4) Panel Sill



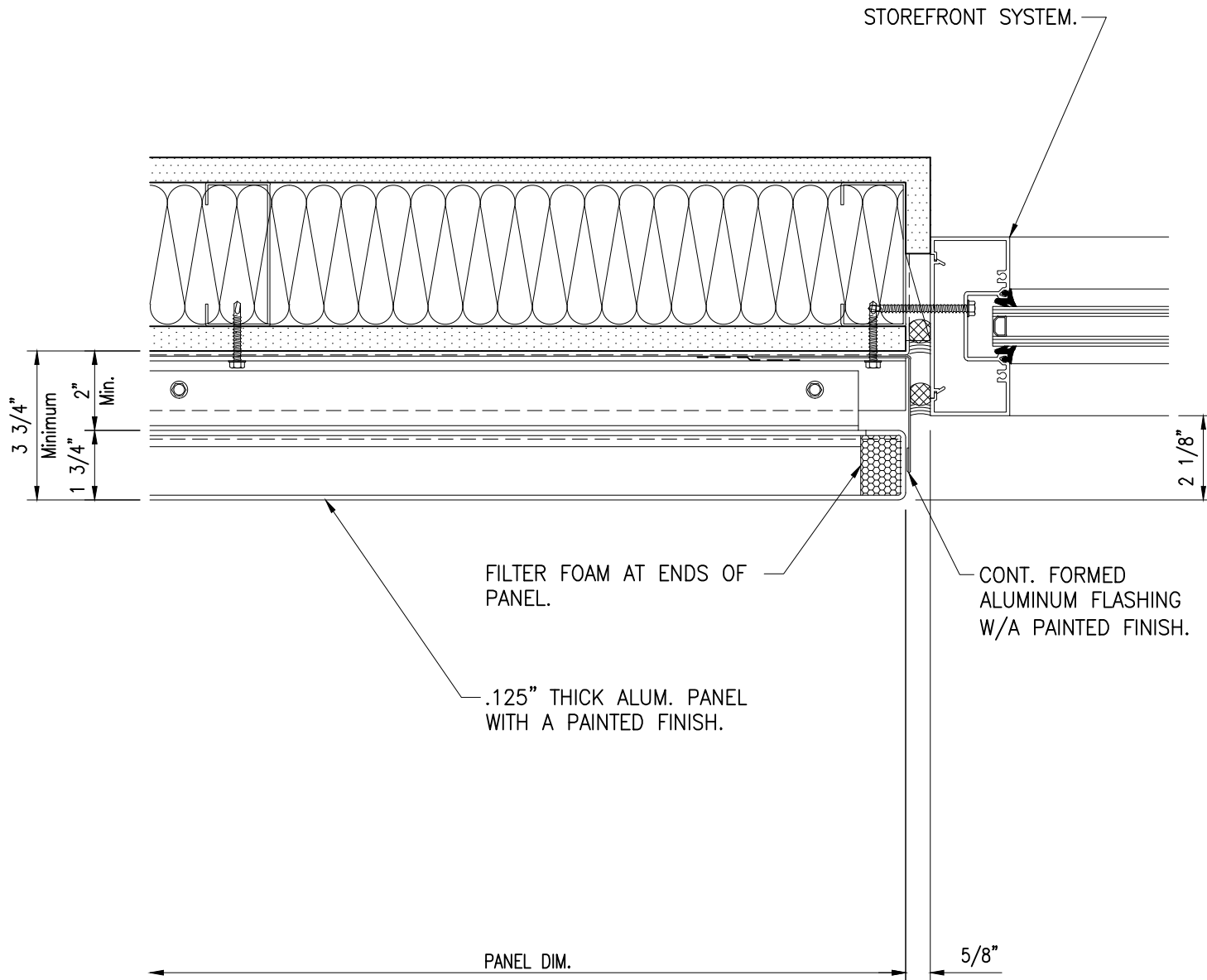
5) Panel Jamb



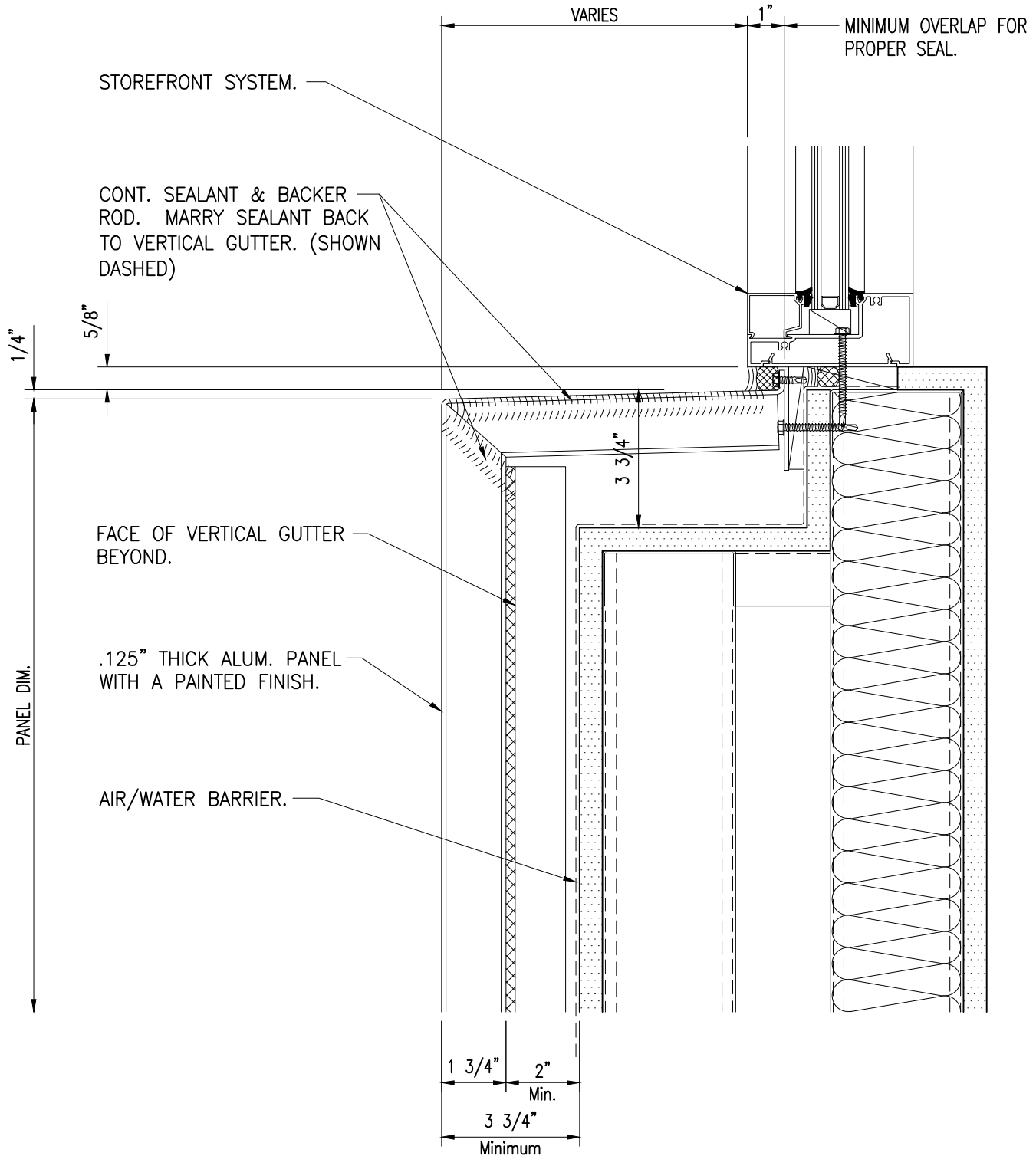
6) Storefront Sill



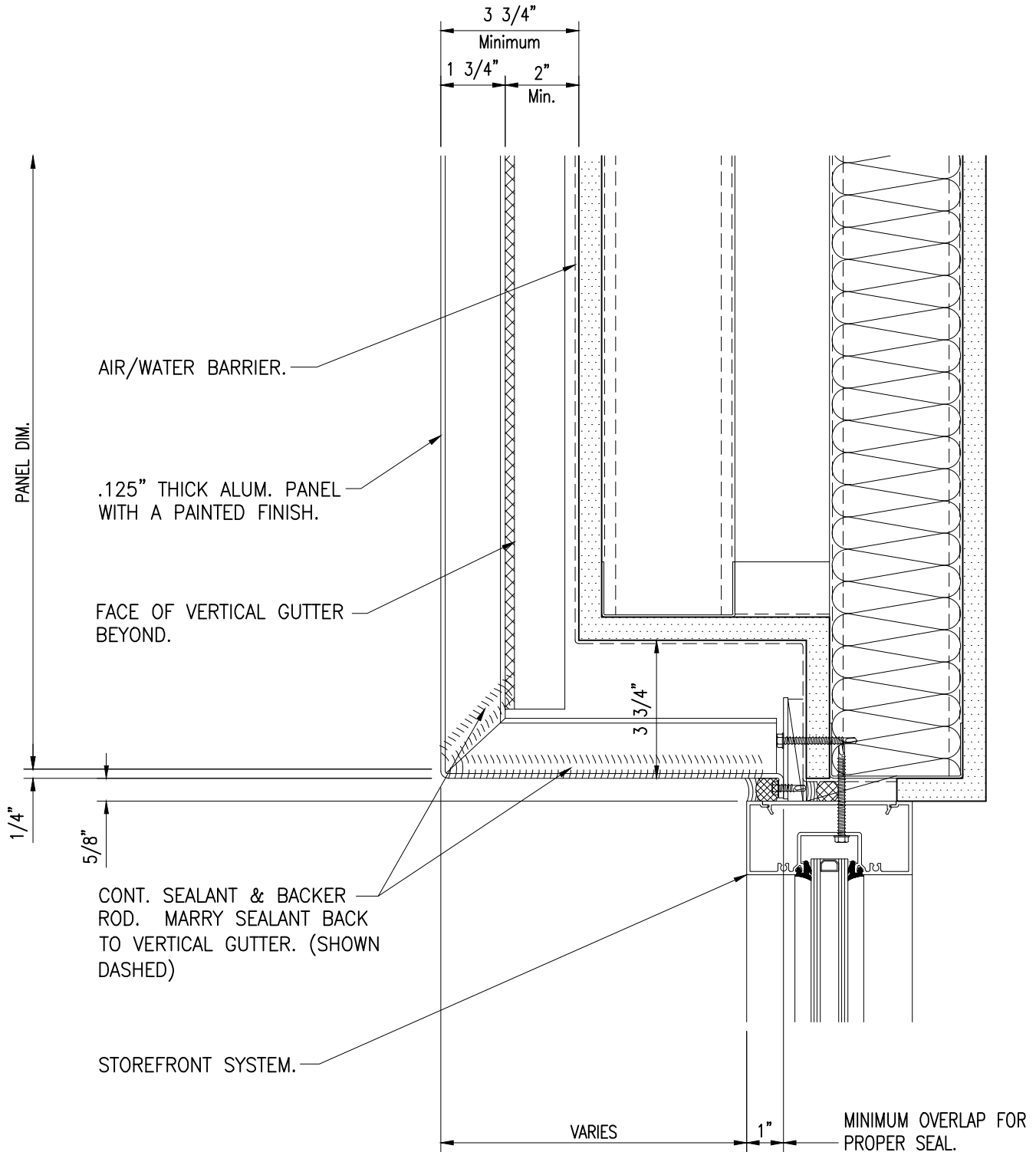
7) Storefront Head



8) Storefront Jamb

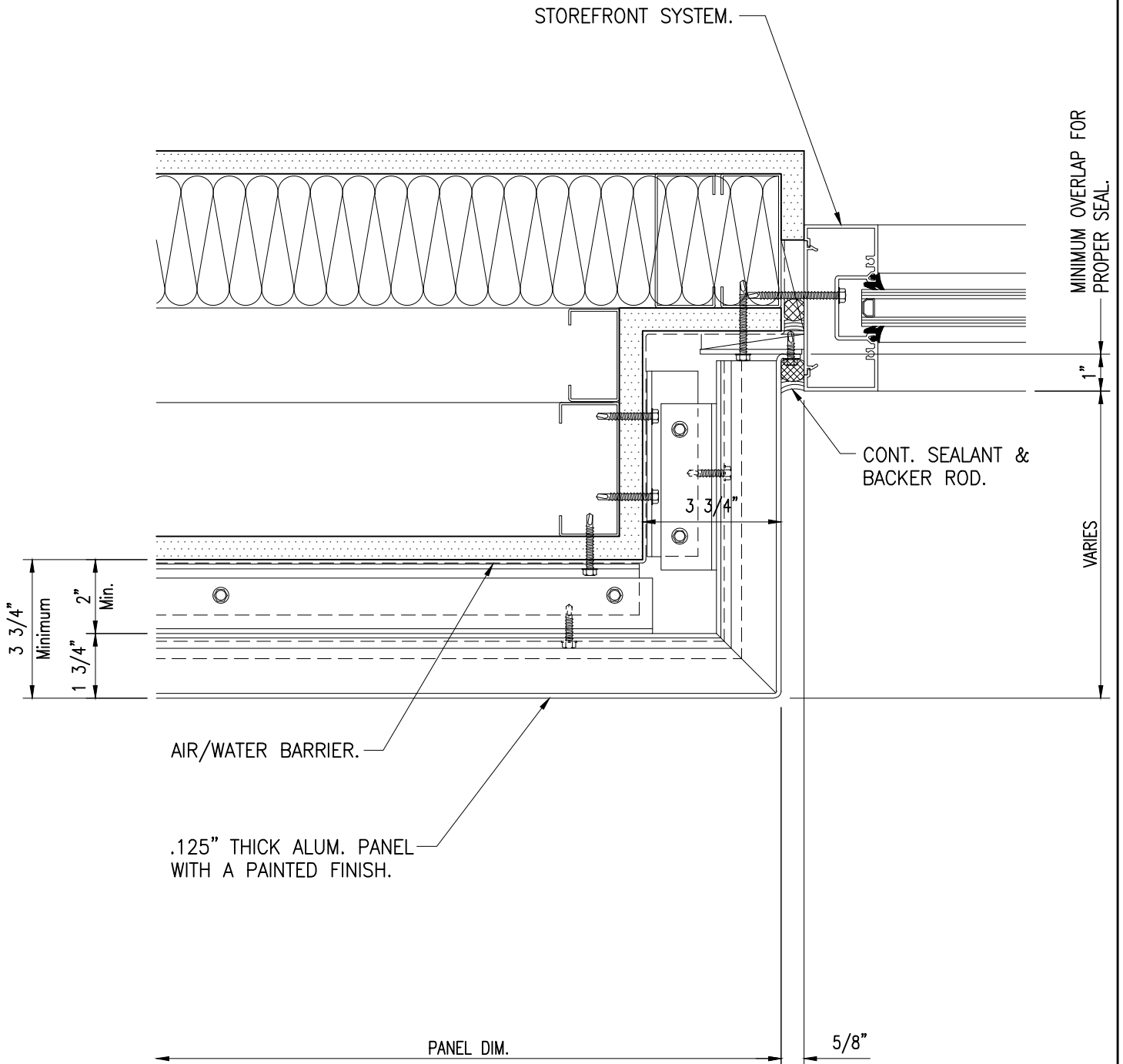


9) Recessed Storefront Sill

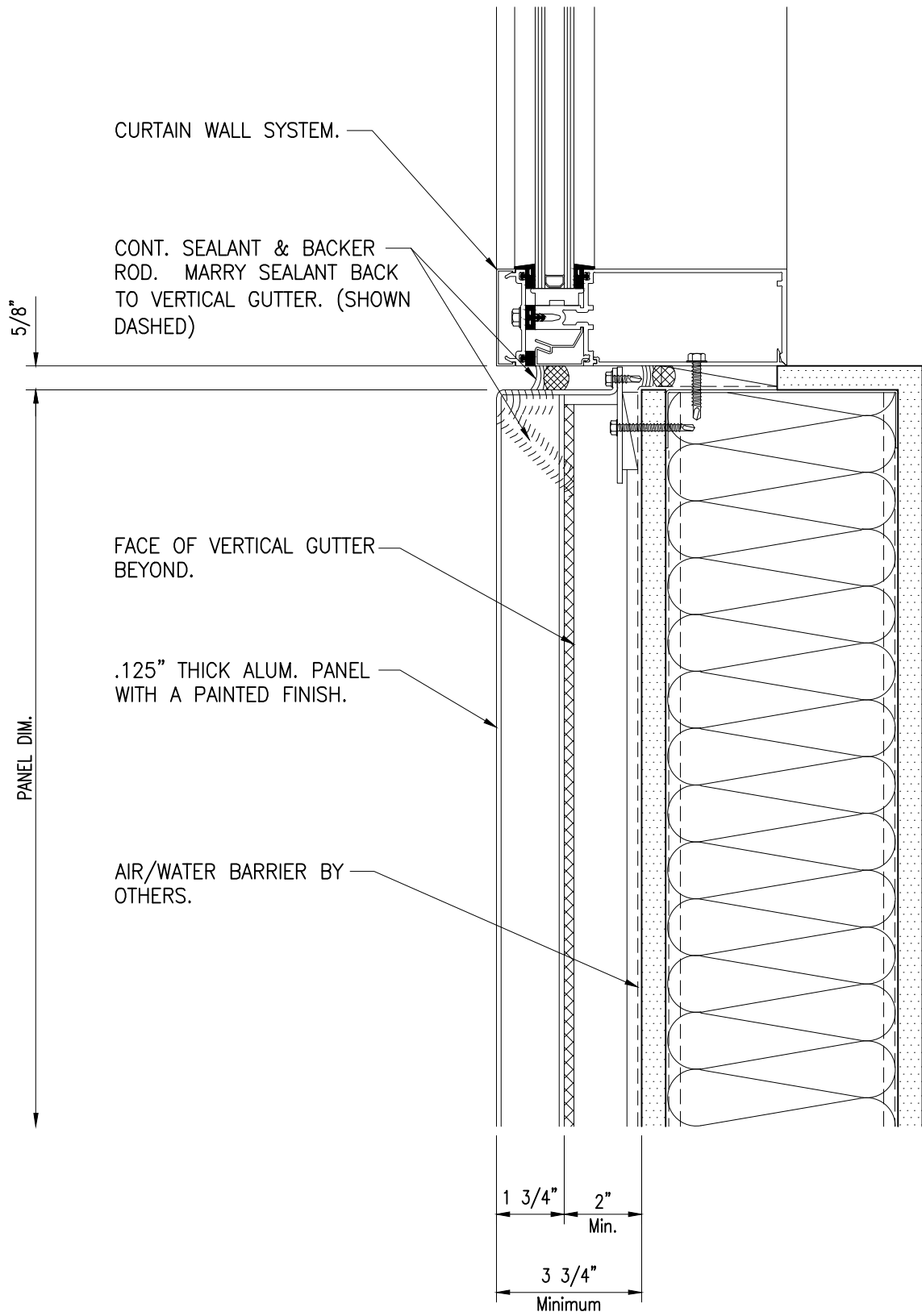


10) Recessed Storefront Head

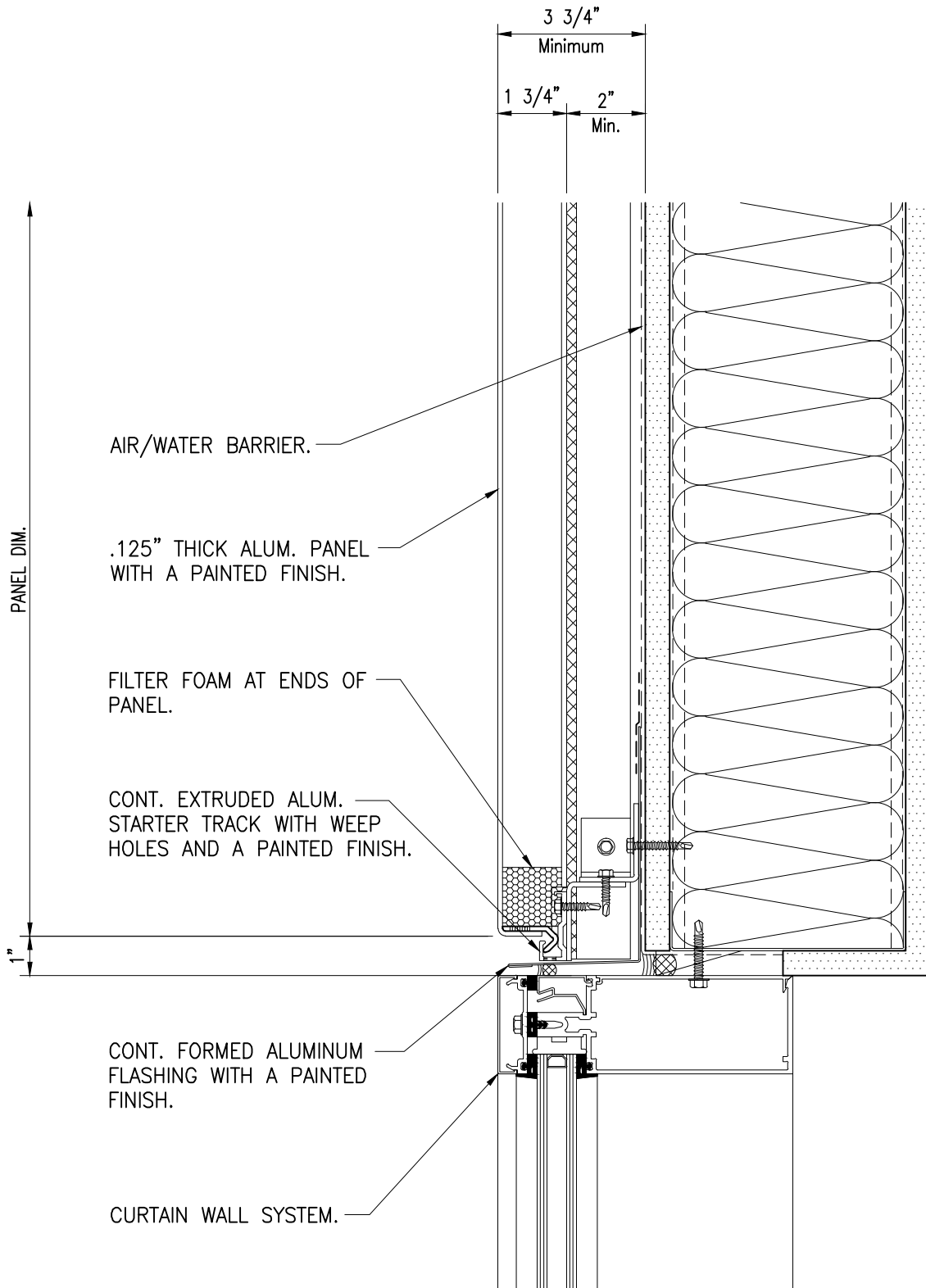
ARCWALL PERS
TYPICAL DETAILS
RAINSCREEN PANEL SYSTEM



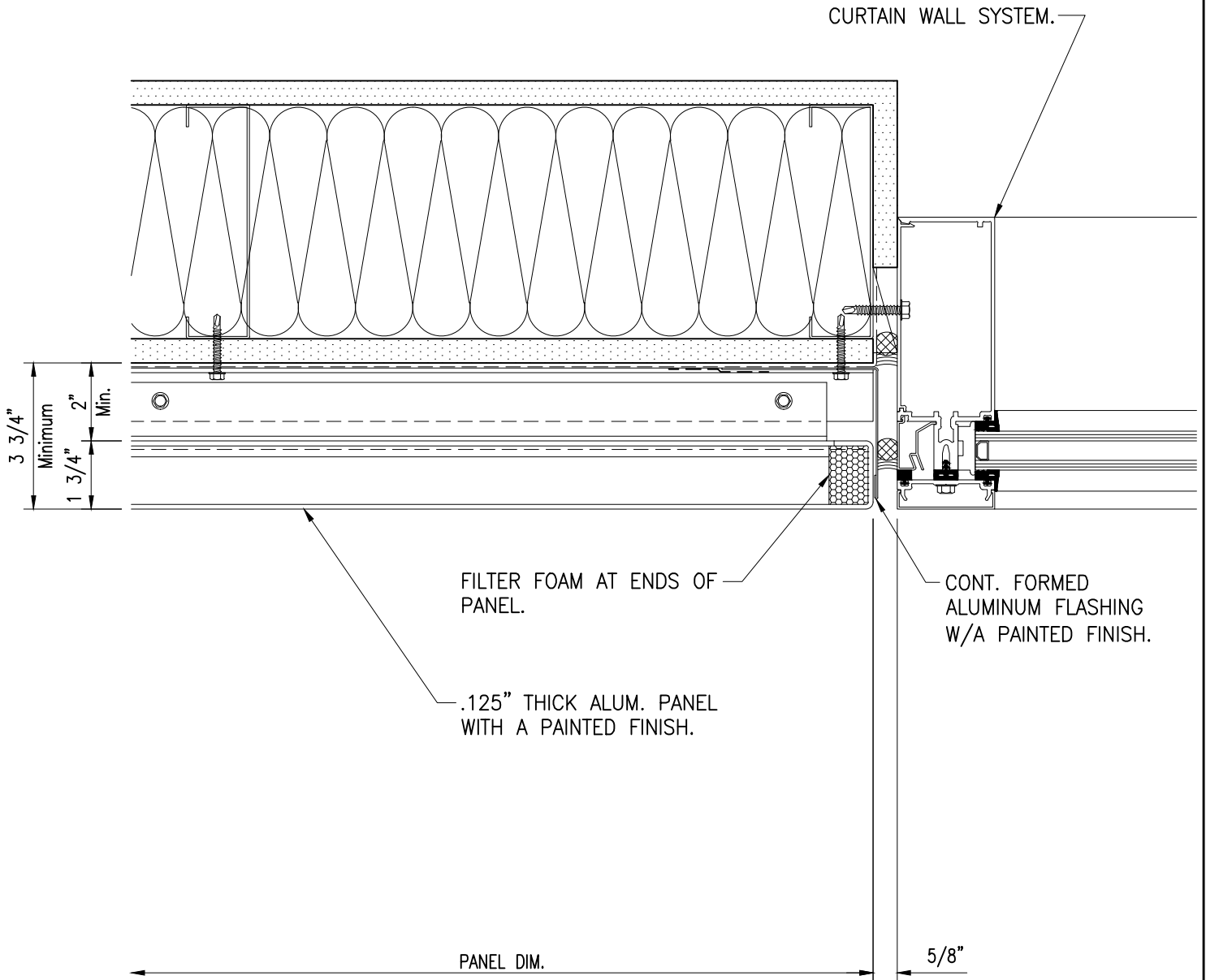
11) Recessed Storefront Jamb



12) Curtain Wall Sill

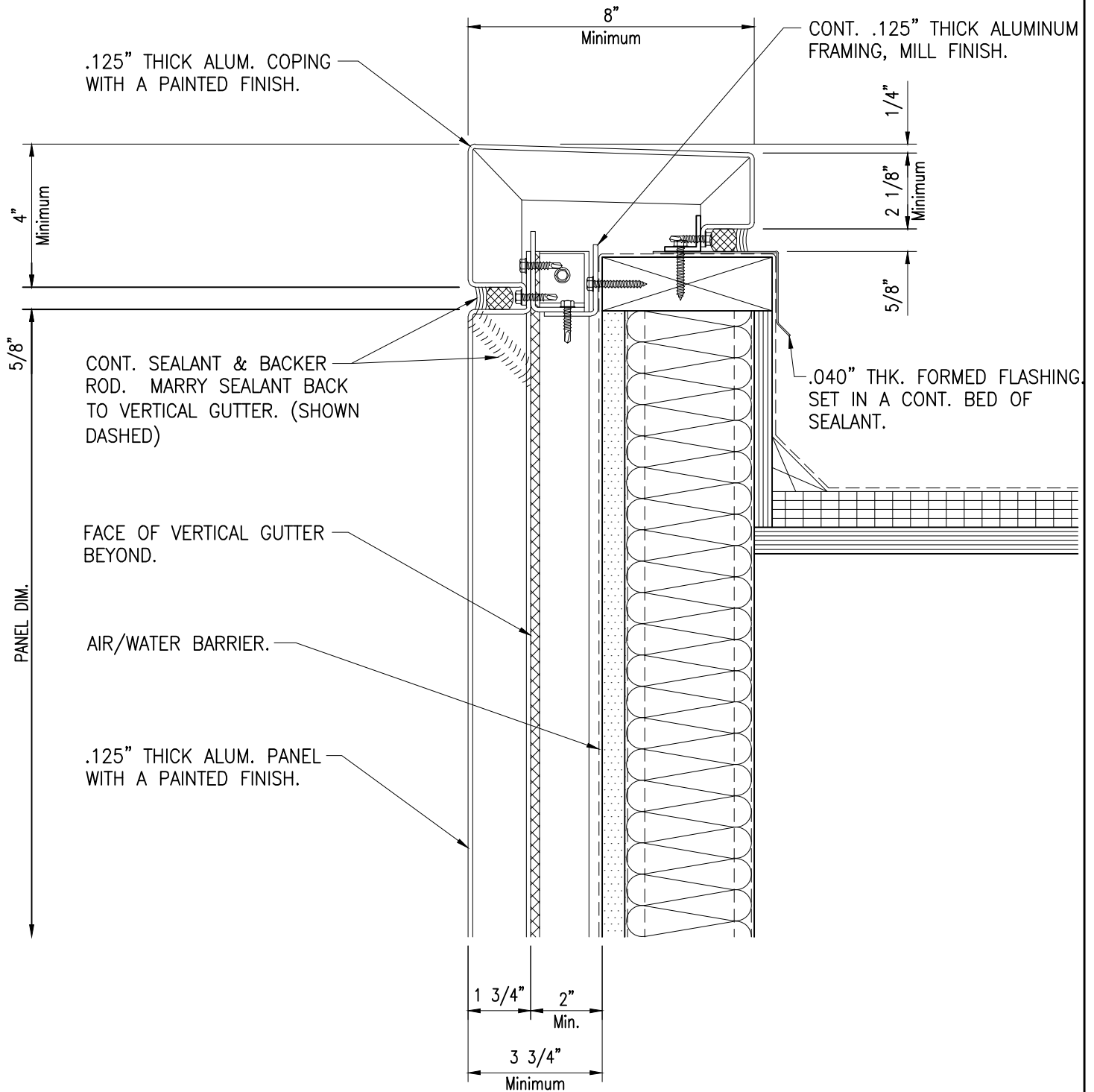


13) Curtain Wall Head

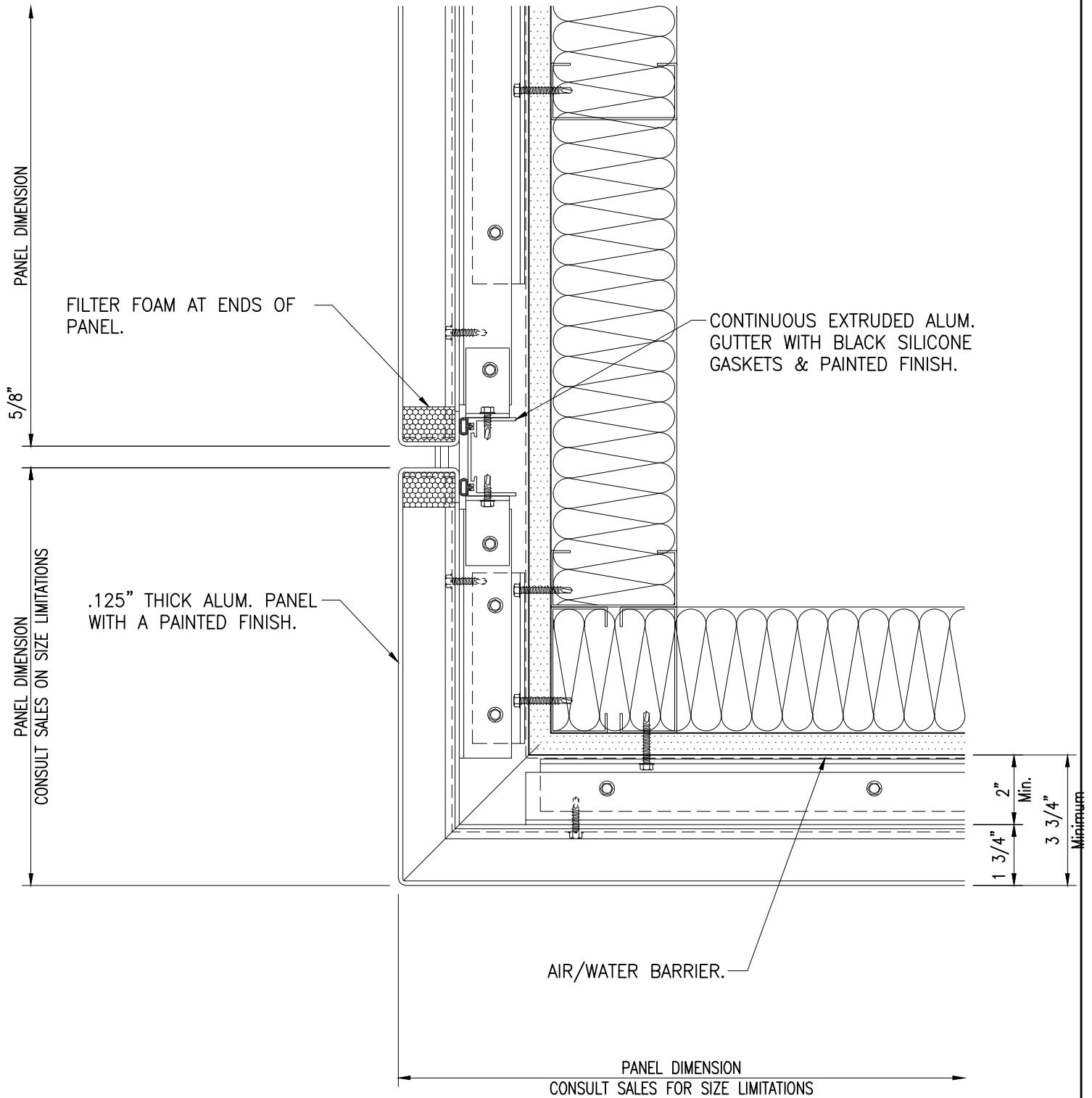


14) Curtain Wall Jamb

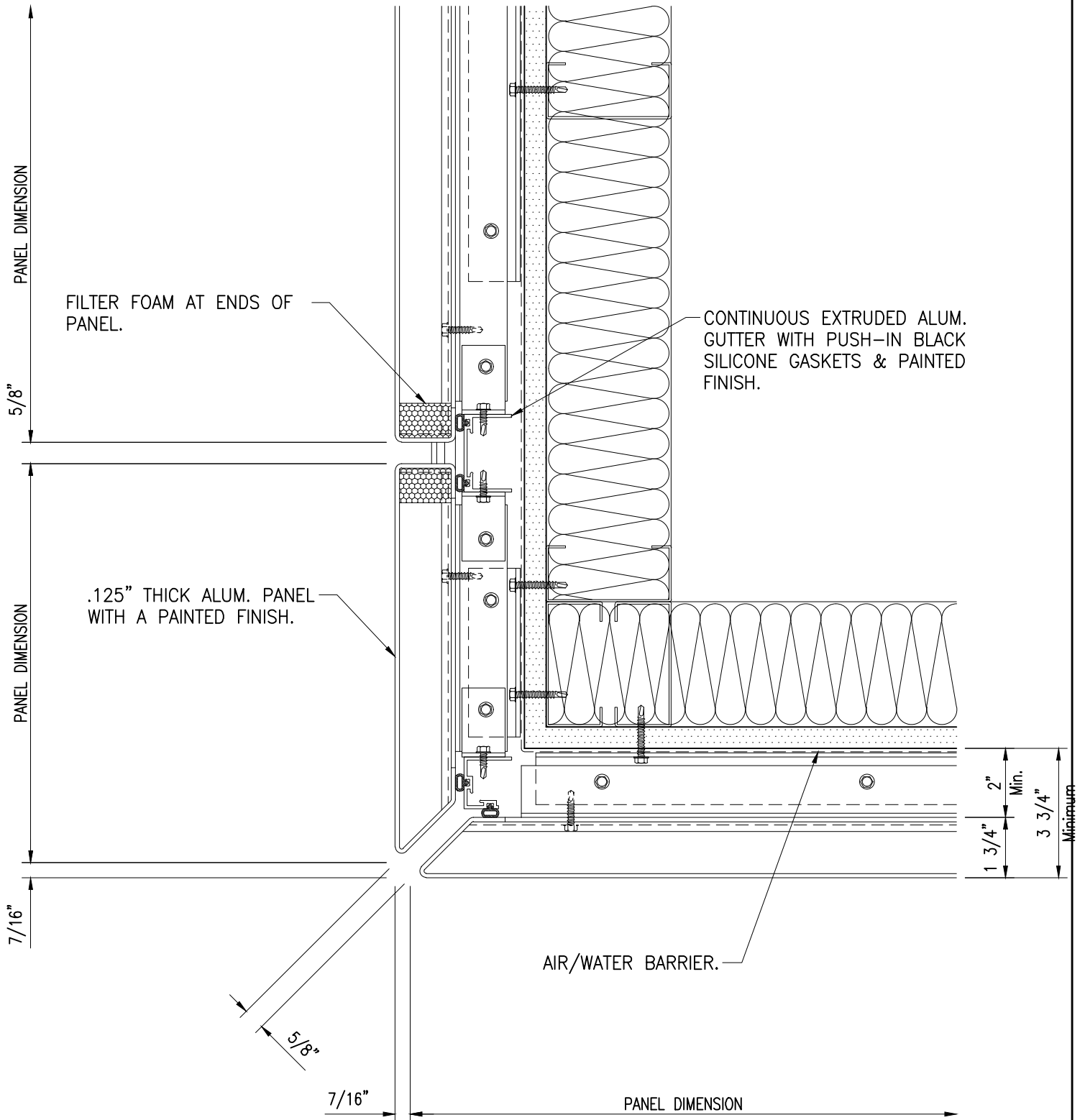
ARCWALL PERS
TYPICAL DETAILS
RAINSCREEN PANEL SYSTEM



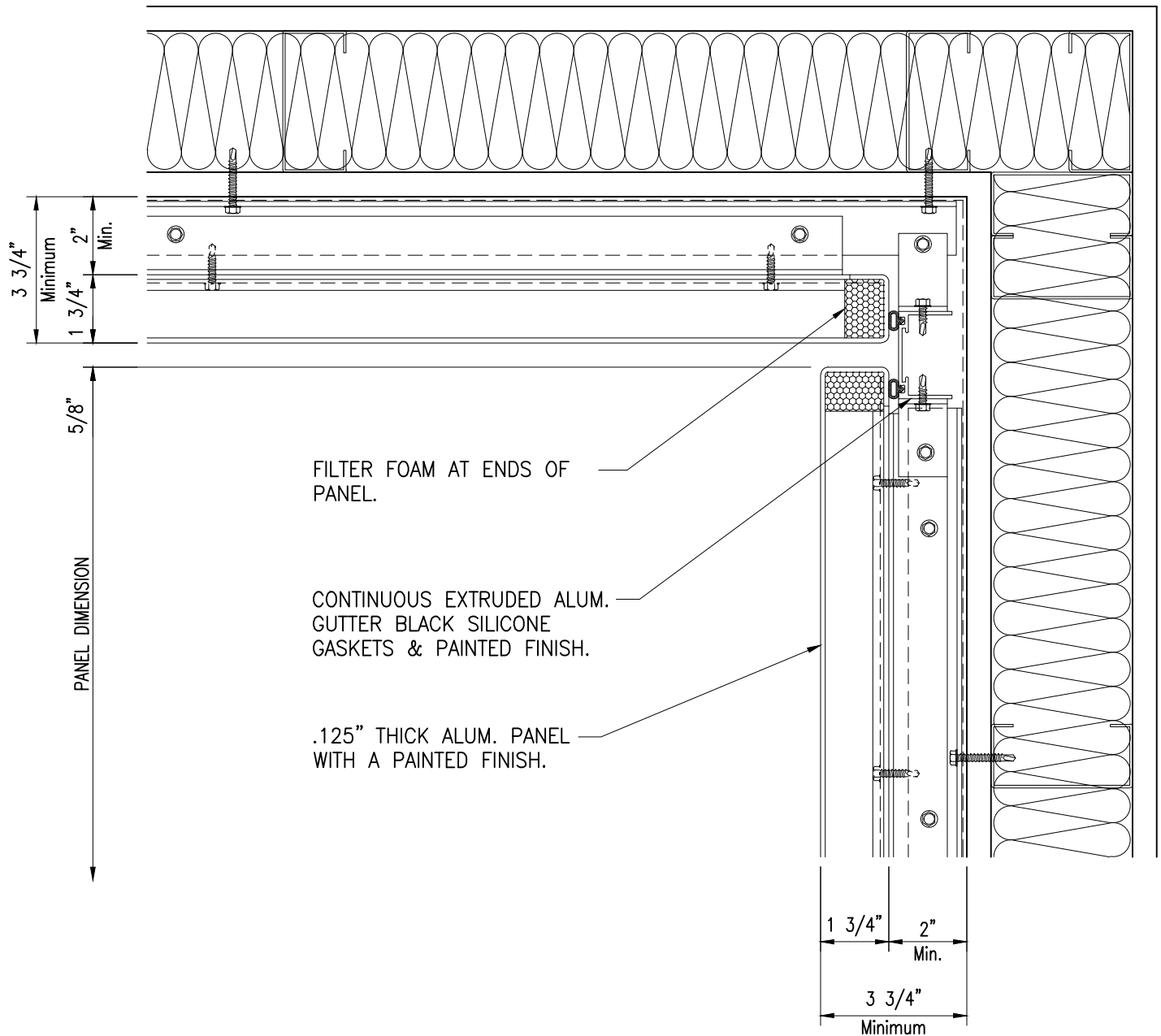
15) Coping



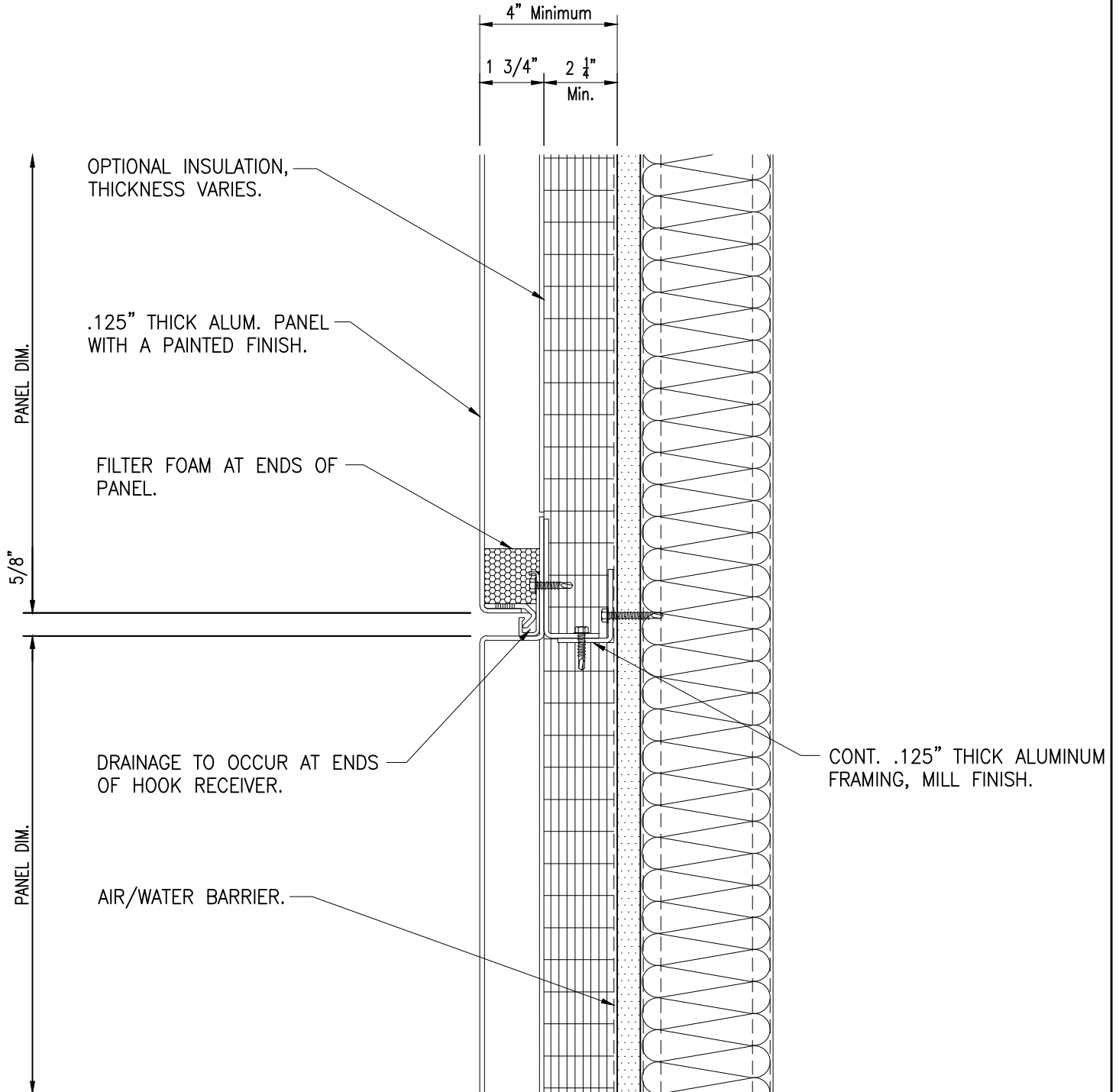
16) Exterior Corner Plan



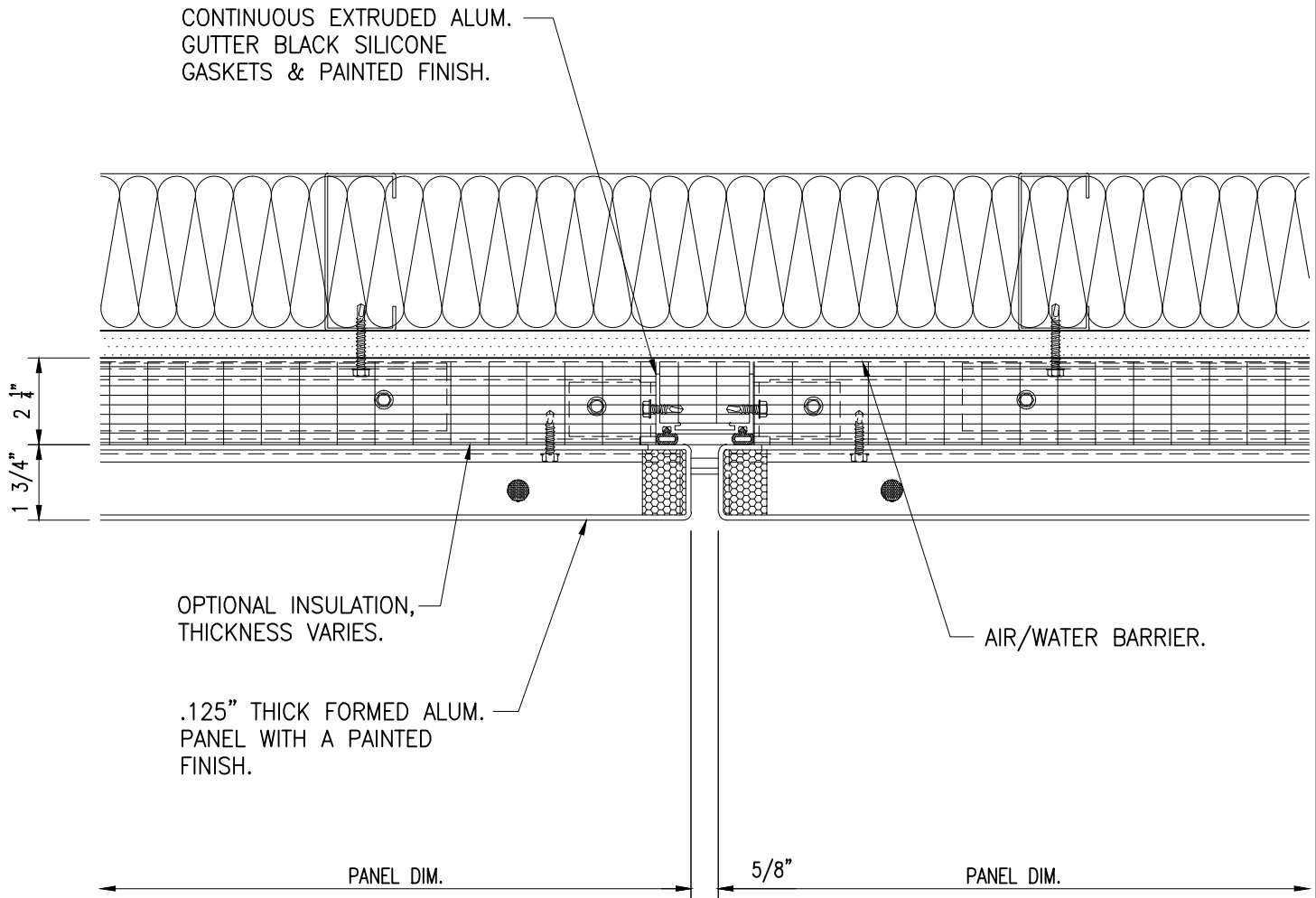
17) Exterior Corner Plan



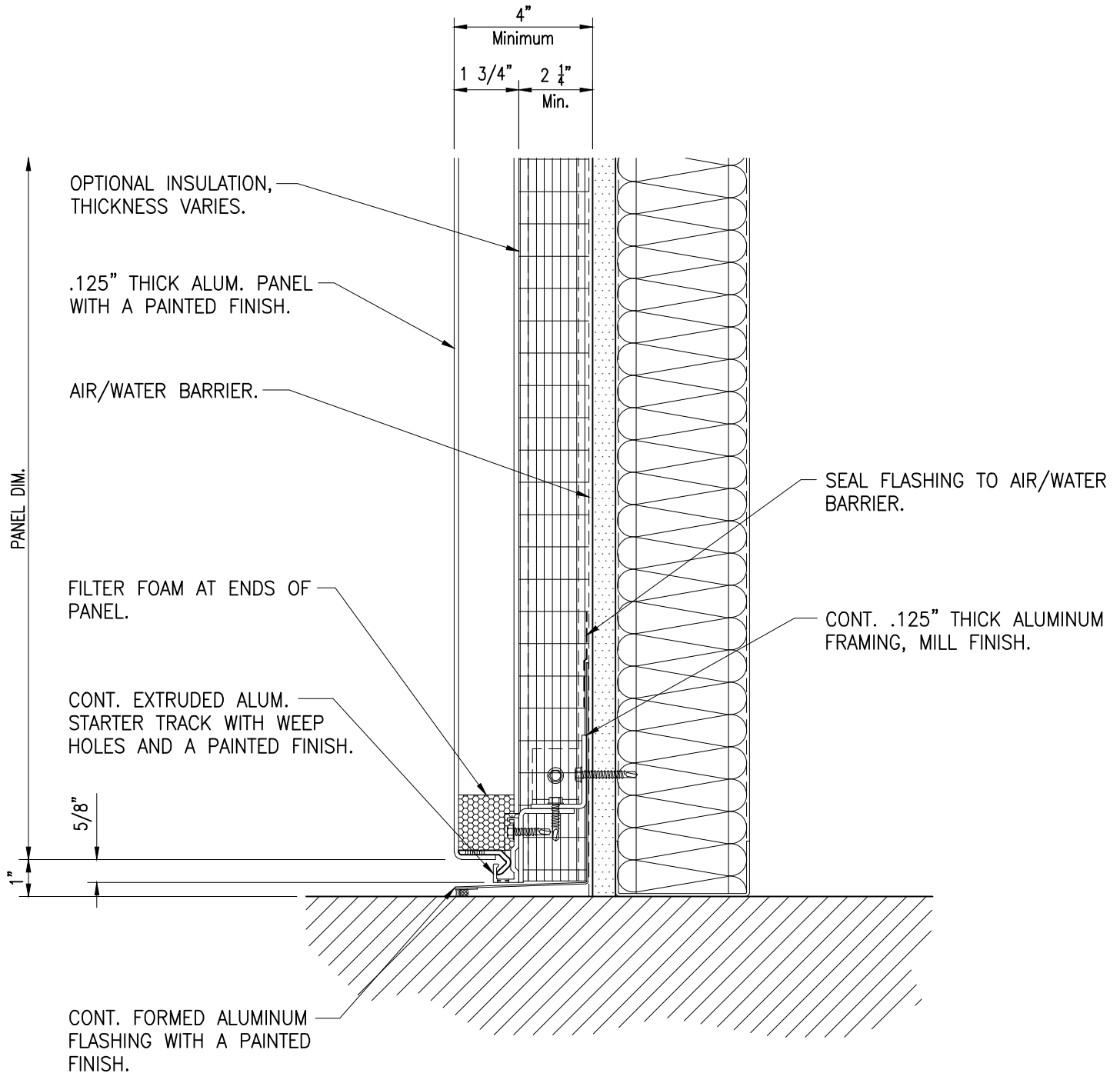
18) Interior Corner Plan



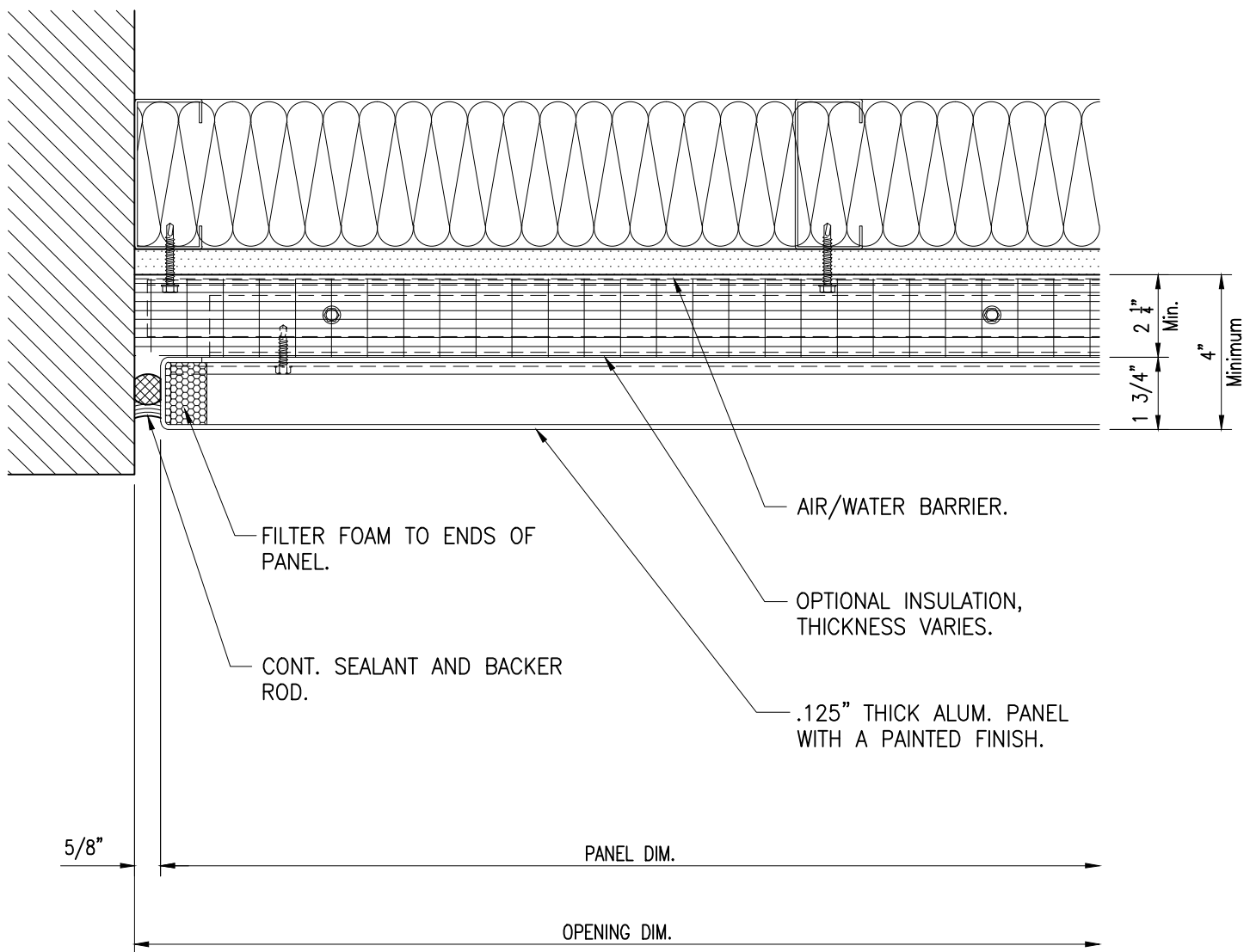
19) Horizontal Joint w/Optional Insulation



20) Vertical Joint w/Optional Insulation



21) Panel Sill w/Optional Insulation



22) Panel Jamb w/Optional Insulation