

Metalwërks[®] Arcwall Interlok Plank

ARCWALL INTERLOK PLANK PRODUCT DESCRIPTION

Arcwall Interlok Plank, DBV (“Drained, Back Vented”) is an economical wall or soffit cladding product used as an insulated or un-insulated cladding system for vertical wall or exterior soffit surfaces. It is a totally “dry-set” panel with integrally formed interlocking longitudinal joints and rigid, finished end conditions. The longitudinal reveals are available in varying sizes. Panel faces can be produced flat or profiled with varying depths and shadow patterns.

For any project demanding complete design flexibility Arcwall Interlock Plank can accommodate artistic freedom with near unlimited finish, profile and size options at a competitive value with other metal or non-metal cladding materials.

FEATURES AND BENEFITS:

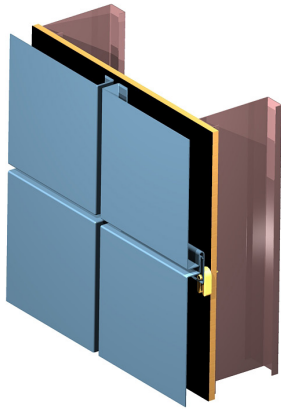
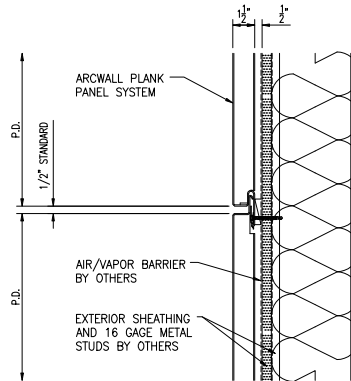
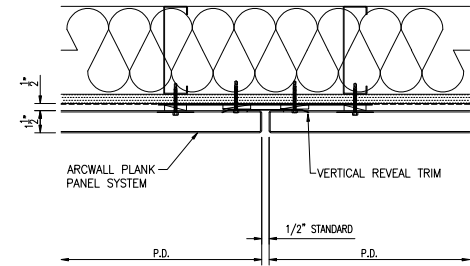
- + Typically manufactured in solid Aluminum, Zinc, Stainless materials. Panels are NOT a composite of laminated layers of plastic or insulation core materials.
- + All panels are custom fabricated and not limited by minimum production runs or size limitations.
- + Panels have uniform strength with no risk of delamination or combustion due to flammable components.
- + Multiple panel colors are available on single project.
- + Solid materials are highly resistant to incidental dents and punctures and suitable for high traffic or abusive environments.
- + Aluminum finishes are coil coated or post applied after fabrication by licensed applicators to provide the highest quality of finish coverage.
- + Finish warranties up to 20 years- Consult factory for specific limitations.

- + Panels are 100% recyclable after their useful life and are manufactured from materials with high post consumer and industrial content which can contribute to LEED credits.
- + Available in Powder coat finishes which contain no Volatile Organic Compounds (VOC).
- + Solid aluminum features allow for forming techniques in 3D profiles and difficult transitions without exposed trims or joints common in composite materials.
- + Panel end joints can be staggered to create a running bond pattern.
- + Materials are highly versatile due to their formability for complex applications.

PRODUCT APPLICATIONS:

- + Any standard wall surface application, whether interior or exterior.
- + Rain screen walls installed over conditioned spaces applied over continuously sheathed or masonry substrates covered with an appropriate weather resistant air/water barrier.
- + Decorative cladding: install over open framing to clad un-conditioned spaces such as fascia, soffit, canopy or screen wall applications.
- + Soffits: When used as an exterior soffit, the panels can be installed over an open grid of framing and furring designed to resist the positive and negative loads imposed. Perforated for venting or solid soffit applications.

Metalwërks® Arcwall InterLok Plank


HORIZONTAL JOINT

VERTICAL JOINT


ARCWALL INTERLOK PLANK APPLICATIONS

Basic Use: Arcwall Interlok Plank panel is used as an uninsulated or insulated exterior cladding system for applications on any vertical or soffit surface as a Rainscreen barrier over a variety of substrates on any commercial application.

COMPOSITION & MATERIALS:

- + Aluminum Substrates available in 0.050", 0.063", or 0.080" thick.
- + 3003-H14 alloy for painted surfaces and Panels are constructed with a smooth appearance to a standard depth of 1-1/2" [38.1mm] deep. Total system depth varies depending on shim space for adjustment to construction tolerances or exterior insulation thickness.
- + Aluminum Finishes and performance Criteria:
 - Kylar 500 / Hylar 500; AAMA 2605-98
 - Polyester Powder Coating; AAMA 2604-98
 - 70% Fluoropolymer Powder (no VOC); AAMA 2605-98
 - Anodized Aluminum (requires 5005 H-14 AQ class Alum)
- + Stainless Steel type 304 or type 316 Alloy. Material Thickness gages:
 - 18 gage for panel module up to 12"
 - 16 gage for panel module up to 24"
 - Consult for other size limitations
- + Stainless Steel Finishes available in #4 satin, #6 long grain or non directional. Consult Metalwërks® for embossed textures and other stainless steel finishes.
- + Zinc Panels available in 1mm or 1.5mm. Consult with Metalwërks® for finish options.
- + Standard vertical and horizontal joints are 1/2" [12.7mm] wide to accommodate construction tolerances and method of attachment.
- + Panels are attached to cold formed metal framing backup as required by the project design in a minimum 16 gauge [1.6mm] G-90 galvanized steel.

SIZES:

Panels are CUSTOM formed to specific project design requirements.

- + Panel width: minimum 6" [152 mm] up to 24" [610 mm] Standard. Larger sizes are available but subject to review. Consult Metalwërks® for more information.
- + Panel length: optimal sizes 60" [76 mm] up to 156" [3962 mm] with longer sizes subject to review. Consult Metalwërks® for specific limitations.

- + Panels are typically flat but can be easily formed to custom profiles as indicated on drawings for any vertical or horizontal surface.
- + Available with reveals, articulations, wide variety of profile capabilities.

SHAPES OR PROFILES:

- + Panels are typically flat but can be easily formed to custom profiles as indicated on drawings for any vertical or horizontal surface.
- + Available with reveals, articulations, wide variety of profile capabilities

ACCESSORIES:

- + Flashing: Metal flashing which may be required at base or penetration conditions produced in the same material finish as the panel system
- + Perforated Panels or louvered vents for accents, screening or ventilation. Consult with Metalwërks® for options.
- + Furring: optional 1 piece zee or hat furring or 2-piece furring for adjustment to adjacent construction.
- + Coping: Wall copings may be produced with the same material as the wall panel system unless otherwise noted.
- + Furring channels as required for proper mounting of panels and optional insulation in 16 ga. minimum thickness.
- + Fasteners: Type 304 Stainless Steel or Cadmium plated as recommended for specific application.

TECHNICAL INFORMATION:

- + ASTM B 209 Standard Specification for Aluminum and Aluminum-Alloy Sheet and Steel.
- + AAMA 605.2 Voluntary Specification for High Performance Organic Coatings on Architectural Aluminum Extrusions and Panel.

WARRANTY INFORMATION:

- + Material & Workmanship – Standard one year, two or five year options.
- + Finish Integrity – Standard 10 year up to 20 years – consult