

To provide an architecturally cohesive appearance and performance, Metalwërks® Canopy Cladding is often formed from the same metal plate material as a building's Metalwërks plate wall system. Canopy Cladding can be created from flat, curved, or 3D panels. Also, formed metals, architectural grilles, lighting, speaker grilles and other elements are easily integrated.



FEATURES AND BENEFITS

- Visually complement or contrast with Metalwërks plate wall systems
- Flat, curved, or 3D panel geometries
- Typically manufactured from solid aluminum plate, with stainless steel plate option
- Panel corners and miters are welded and ground smooth for a watertight and seamless appearance
- Solid plate is highly resistant to incidental dents and punctures
- Non-Combustible: minimal smoke or fuel contribution
- Avoids NFPA 285 complications by avoiding thermo-plastic cores
- All panel systems are reinforced/stiffened to resist deflection limits
- 100% recyclable and manufactured from materials with high post-consumer/ industrial content which can contribute to LEED credits
- Virtually limitless palette of colors, finishes, and textures
- Aluminum: high performance finishes are post applied for the highest quality of coverage and uniformity
- Available in no-VOC powder coated finishes. Non-toxic and non-combustible.
- Finish warranties up to 20 years (coated aluminum). Consult Metalwërks for limitations

USES

- Entrance canopies and vestibules with or without storefronts and entrance systems to protect egress
- Projecting brow features for shading or architectural treatment at prominent locations
- Incorporate lighting and A/V features
- Cornice features to accent structural elements
- Light features: light canopies and ceiling clouds



METAL SUBSTRATE AND FINISH OPTIONS

ALUMINUM

3003-H14 aluminum alloy-temper

Thickness: 0.125" (3.18 mm) standard. Consult with Metalwërks for options.

Finishes: Kynar® or architectural TGIC Polyester powder coating

STAINLESS STEEL

T304 or T316 for enhanced corrosion resistance

Thickness: 14 gauge (0.078") (1.98 mm) standard, 11 gauge (0.125") (3.18 mm), 12 gauge (0.109") (2.78 mm), 16 gauge (0.063") (1.60 mm) options

Finishes: #4, #6, #8, and non-directional satin in smooth or custom embossed patterns

ZINC

Consult with Metalwërks for options

Zinc is a natural metal which has specific properties that will limit its use. It must be adequately drained, ventilated and weeped when used in exterior applications to prevent excessive corrosion. Please consult Metalwërks for the appropriate uses for your project design.

PANEL SIZES

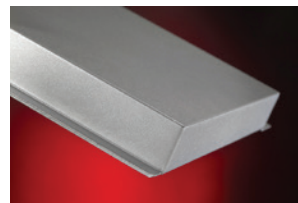
Widths: 12" (305 mm) to 65" (1,651 mm)*

Lengths: 12" (305 mm) to 160" (4,064 mm)*

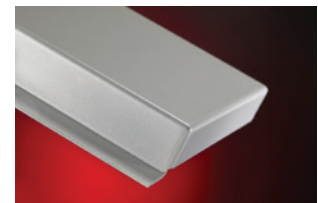
Depth: Varies

* Maximum panel size depends upon plate material, gauge, finish, and geometry

SHARP CORNER



STANDARD CORNER



PANEL WEIGHT

Consult with Metalwërks for options

WARRANTY

Material & Workmanship: 1-year standard, with 2- or 5-year options

Finish Integrity: 10-year standard and up to 20-year for coated aluminum