

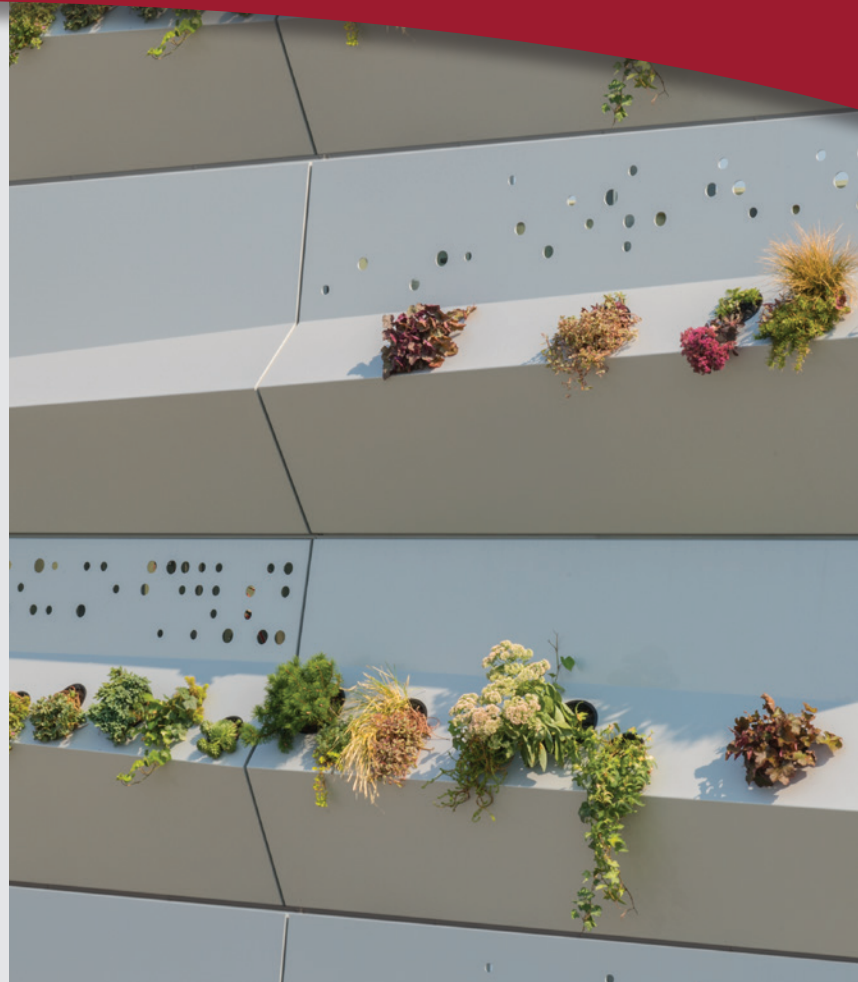
Metalwërks Sculpted frees designers to create iconic facades more easily and affordably than ever before by elevating three-dimensional wall panels to entirely new heights. This innovative dry-set rainscreen system features three complementary and interchangeable wall panel design schemes that produce the boldest three-dimensional forms possible.

Additionally, for enhanced visual expression, the 100% solid metal system is engineered for easy integration with LED lighting and features opportunities to incorporate other ornamental design elements. Plus, Sculpted provides opportunities to incorporate integrated planters and irrigation for growing vegetation.

Whether Sculpted is incorporated throughout the entirety of the building envelope or used solely for accented or featured areas, such as outdoor meeting spaces, the system easily interfaces with all other Metalwërks systems and alternative facade materials.

Sculpted may be installed over continuous masonry, concrete, or as the outer cladding in a wall assembly that incorporates continuous insulation and a suitable air and water barrier. Sculpted is also ideal for interior applications such as lobbies and atriums or any special gathering area.

Metalwërks can work with a design team to create other three-dimensional forms that meet your vision or design intent.



**Parametric panels are the most intricate with a unique sloping and tapering style. These panels may be installed horizontally or vertically, and allow for the addition of custom transverse score patterns, cut holes, graphics, letters or logos which can also be backlit with Integrated LEDs. Holes can also be incorporated for receiving planters for growing vegetation. Parametric offers a high degree of 3D design options.**

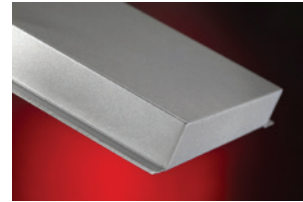
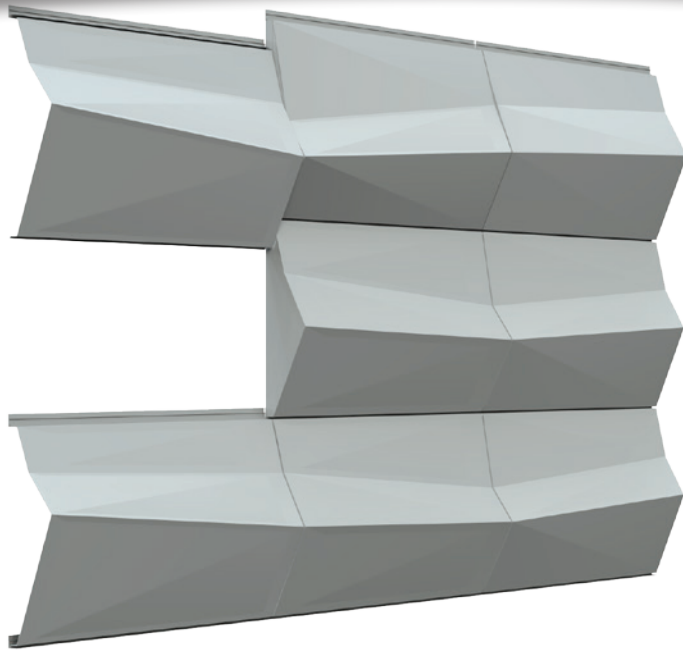
### APPLICATIONS

- Architectural screen wall assemblies, walls for parking structures or monumental tower and/or facade features
- Prominent feature walls on the exterior facade facing publicly viewed elevations, using more economical Metalwërks wall systems on the less prominent walls
- Demising/privacy walls between residential unit balconies or pool/deck play level screen walls
- Interior lobby spaces in atria or clerestory spaces
- Exterior/Interior facades for large public spaces such as stadiums, hotels, convention centers, airports/transit centers
- Public gathering or convocation spaces at higher education facilities
- Greening wall surfaces and feature elements on green roof assemblies
- Kitchen/herb gardens for restaurants, bars, public plazas
- Lighted feature walls

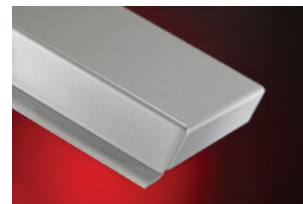
\*Patent Pending

### DETAILS

- Manufactured from solid aluminum, stainless, or zinc plate with integral panel returns formed from a single piece of metal
- Solid aluminum and stainless steel: high resistance to denting and puncturing, ideal for high-traffic or abusive areas
- Fully mitered and welded corners ground smooth for seamless appearance
- 0.625" (15.88 mm) standard horizontal and vertical joint with variable options
- Adjustable furring to address variable construction tolerances and ensuring vertical sealing to air and water barrier, minimizing shims
- Non-Combustible: minimal smoke or fuel contribution
- Avoids NFPA 285 complications by avoiding thermo-plastic cores
- All panel systems are reinforced/stiffened to resist deflection limits
- Concealed fastened using corrosion-resistant self-tapping screws
- Aluminum: post-applied finishing for long-term performance and uniform aesthetic
- 100% recyclable with high percentage of post-consumer and industrial content, which may contribute to LEED credits
- Common panel platform for seamless integration with other Metalwërks wall systems



**SHARP CORNER**



**STANDARD CORNER**

### DESIGN OPTIONS

- Variable reveals: Horizontal 0.5" - 2" (12.7 mm - 50.8 mm); Vertical 0.25" - 6" (6.35 mm - 152.4 mm)
- Integrated LEDs
- Integrated planters and irrigation
- Unlimited color options for aluminum plate
- Options for #4, #6, #8, and non-directional finishes for stainless plate
- Matching perforated and louvered panels
- *Optional back-cuts on formed panel edges for a sharper bend and crisper appearance*

### METAL SUBSTRATE AND FINISH OPTIONS

#### ALUMINUM

**3003-H14 aluminum alloy-temper**

**Thickness:** 0.125" (3.18 mm)

**Finishes:** Kynar®, architectural TGIC polyester powder coating, or anodized

#### STAINLESS STEEL

**T304 or T316**

**Thickness:** 18 gauge (0.05") (1.27 mm) standard, 16 gauge (0.063") (1.60 mm), 14 gauge (0.078") (1.98 mm), 12 gauge (0.109") (2.78 mm) options

**Finishes:** #4, #6, #8, and non-directional satin in smooth or custom embossed patterns

#### ZINC

**Thickness:** 0.079" (2 mm)

**Finishes:** Consult with Metalwërks for options

Zinc is a natural metal which has specific properties that will limit its use. It must be adequately drained, ventilated and weeped when used in exterior applications to prevent excessive corrosion. Please consult Metalwërks for the appropriate uses for your project design.

### PANEL SIZES

**Widths:** 24" (610 mm) to 50" (1,270 mm)\*

**Lengths:** 24" (610 mm) to 160" (4,064 mm)\*

**Depth:** Varies

\* Maximum panel size depends upon plate material, gauge, finish, and geometry

### PANEL WEIGHT RANGE

(dependent upon gauge and geometry)

**Aluminum:** 3.5 lbs./ft<sup>2</sup>

**Stainless Steel:** 6.02 lbs./ft<sup>2</sup>

**Zinc:** 5.74 lbs./ft<sup>2</sup>

Ranges provided for clarification. Consult with Metalwërks for further options.

### ACCESSORIES

**Flashing:** 0.040" (1.02 mm) thick to 0.063" (1.60 mm) aluminum

**Coping:** Wall copings may be produced with the same material as the wall panel system

**Furring / Framing Channels:** Engineered secondary supports to accommodate added dead loads

**Fasteners:** Type 304 stainless steel or cadmium-plated as recommended

**Shims:** High impact thermally-broken plastic shims to maintain co-planar surfaces

### WARRANTY

**Material & Workmanship:** 1-year standard, with 2- or 5-year options

**Finish Integrity:** 10-year standard and up to 20-year for coated aluminum