

Econowall is an economical drained and back-ventilated rainscreen cladding system. Econowall panels are dry-set with interlocking longitudinal joints and rigid finished end conditions.

For any project demanding complete design flexibility, Econowall can accommodate artistic freedom with nearly unlimited finishes, profiles and size options at a competitive value. Econowall has finished end cap conditions and custom modules not available with roll formed products at competitive costs.

Econowall may be installed over continuous masonry, concrete, or as the outer cladding in a wall assembly that incorporates continuous insulation and a suitable air and water barrier. The system is also an excellent choice for open framing applications to clad un-conditioned spaces such as fascia, soffit, canopy or screen wall applications. Panels can be solid or perforated for soffit applications.

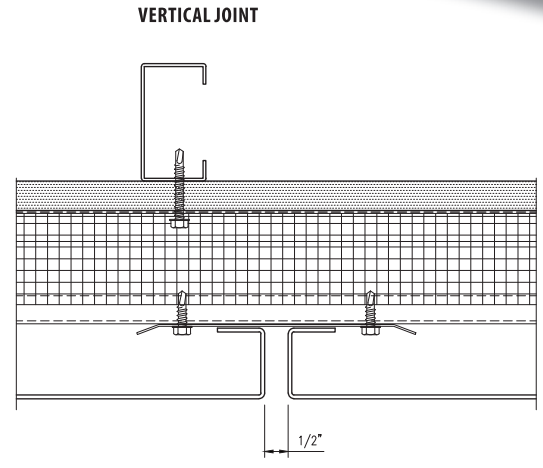
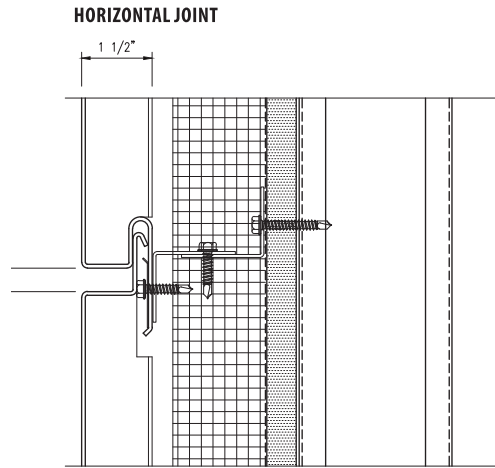
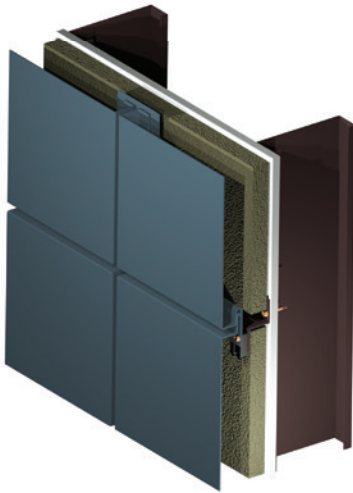


### DETAILS

- Manufactured from pre-finished aluminum, stainless, or zinc with integral panel returns formed from a single piece of metal
- Fully mitered aluminum and stainless steel panels
- 0.5" (12.7 mm) standard horizontal and vertical joint with variable options
- Adjustable furring to address variable construction tolerances and ensuring vertical sealing to air and water barrier, minimizing shims
- Non-Combustible: minimal smoke or fuel contribution
- Avoids NFPA 285 complications by avoiding thermo-plastic cores
- All panel systems are reinforced/stiffened to resist deflection limits
- Panels install horizontally or vertically
- Concealed fastened using corrosion-resistant self-tapping screws
- As rainscreen systems rely on gravity to drain water, all skyward facing surfaces, copings, sloped conditions and all perimeters must be sealed
- 100% recyclable with high percentage of post-consumer and industrial content, which may contribute to LEED credits

### DESIGN OPTIONS

- Panels may be mixed and variable modules in flat or 3D profiles
- Variable reveals: Horizontal 0.125" - 2" (3.18 mm - 50.8 mm); Vertical 0.25" - 6" (6.35 mm - 152.4 mm)
- Panel end joints can be staggered to create running bond patterns
- Unlimited color options for aluminum
- Options for #4, #6, #8, and non-directional finishes for stainless steel
- Matching perforated and louvered panels
- May also be used for column, beam and pilaster cladding
- Integrated shop formed reveals



## METAL SUBSTRATE AND FINISH OPTIONS

### ALUMINUM

#### 3003-H14 aluminum alloy-temper

**Thickness:** 0.08" (2.03 mm) standard, 0.05" (1.27 mm), 0.063" (1.60 mm), 0.09" (2.29 mm)

**Finishes:** Kynar®, architectural TGIC polyester powder coating, or anodized

### STAINLESS STEEL

#### T304 or T316

**Thickness:** 18 gauge (0.05") (1.27 mm) standard and 16 gauge (0.063") (1.60 mm) option

**Finishes:** #4, #6, #8, and non-directional satin in smooth or custom embossed patterns

### ZINC

**Thickness:** 0.059" (1.5 mm) standard and 0.047" (1.2 mm) option

**Finishes:** Consult with Metalwërks for options

Zinc is a natural metal which has specific properties that will limit its use. It must be adequately drained, ventilated and weeped when used in exterior applications to prevent excessive corrosion. Please consult Metalwërks for the appropriate uses for your project design.

## PANEL SIZES

**Widths:** 6" (152.4 mm) to 36" (914.4 mm)\*

**Lengths:** 12" (305 mm) to 160" (4,064 mm)\*

**Depth:** 1.5" (38.1 mm) minimum

\* Maximum panel size depends upon material, gauge, finish, and geometry

## PANEL WEIGHT RANGE

(dependent upon gauge and geometry)

**Aluminum:** 2.18 - 2.825 lbs./ft<sup>2</sup>

**Stainless Steel:** 2.994 - 3.477 lbs./ft<sup>2</sup>

**Zinc:** 3.58 lbs./ft<sup>2</sup> - Consult with Metalwërks

Ranges provided for clarification. Consult with Metalwërks for further options.

## ACCESSORIES

**Flashing:** As required at base or penetration conditions produced in the same material finish as the panel system

**Coping:** Wall copings may be produced with the same material as the wall panel system

**Furring Channels:** As required for proper mounting of panels

**Fasteners:** Type 304 stainless steel or cadmium-plated as recommended

**Shims:** High impact thermally-broken plastic shims to maintain co-planar surfaces

## WARRANTY

**Material & Workmanship:** 1-year standard, with 2- or 5-year options

**Finish Integrity:** 10-year standard and up to 20-year for coated aluminum