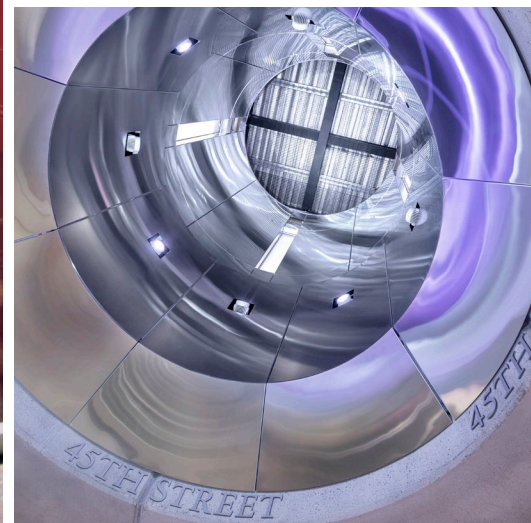


Metalwërks® custom designs and fabricates panelized plate cladding for a variety of interior wall and ceiling applications to achieve an architect's vision and performance criteria. The smooth metal cladding may be applied to virtually any vertical, sloped, or horizontal surface over uninsulated masonry, structural steel, stud backup, or within curtain wall designs. An excellent choice for projects demanding wide design flexibility, the cladding accommodates artistic freedom by offering nearly unlimited combinations of finishes, profiles, and sizes, as well as options for joint treatments, all at a competitive value with other metal or non-metal cladding materials.



## FEATURES AND BENEFITS

- Typically manufactured in solid 0.063-0.125" aluminum
- Contains no plastic or insulation core materials
- Custom fabricated with no minimum production runs or size limitations.
- Panels have uniform strength with no risk of delamination or combustion due to flammable components
- Welded panel corners, ground smooth with no visible seams
- All products are engineered and manufactured in-house
- Highly dent and puncture resistant, suitable for high-traffic or abusive environments
- Easily curved, contoured for radii down to 6"
- Post-applied finishing (applied after fabrication) by licensed applicators, producing the highest quality results
- Finish warranties up to 20 years (Consult factory for specific limitations)
- 100% recyclable panels manufactured from aluminum plate containing high post-consumer and industrial content, which can contribute to LEED credits.
- Available in no-VOC powder coat finishes

- Solid aluminum construction accommodates curves, 3D profiles, and difficult transitions without unsightly splices or joints common with composite materials
- Highly versatile due to formability for complex applications

## COMMON APPLICATIONS

- Walls and ceilings
- Stairwells
- Elevator cabs and bays
- Escalators and people movers
- Column covers
- Tunnels
- Concourses and terminals
- Smoke and exhaust shafts



## METAL SUBSTRATE AND FINISH OPTIONS

### ALUMINUM

**3003-H14 aluminum alloy-temper**

**Thickness:** 0.063" (1 mm) up to 0.187" (4.75 mm) options

**Finishes:** Kynar®, acrylic enamel, baked enamel, architectural TGIC Polyester powder coating, or anodized

### STAINLESS STEEL

**T304 or T316**

**Thickness:** 18 Gauge (0.050") - 12 gauge (0.101") (2.78 mm) options

**Finishes:** #4, #6, #8, and non-directional satin in smooth or custom embossed patterns

## PANEL SIZES

**Widths:** 12" (305 mm) to 54" (1,371 mm)\*

**Lengths:** 12" (305 mm) to 160" (4,064 mm)\*

**Depth:** 1" - 1.75" (44.5 mm) minimum

\* Maximum panel size depends upon plate material, gauge, finish, and geometry

## PANEL WEIGHT RANGE

(Dependent upon gauge and geometry)

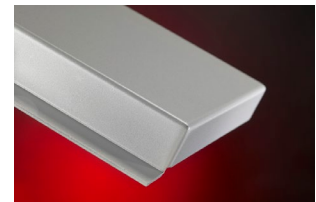
**Aluminum:** 2.62 - 3.52 lbs/ft<sup>2</sup>

**Stainless Steel:** 2.25 - 4.6 lbs/ft<sup>2</sup>

### SHARP CORNER



### STANDARD CORNER



## ACCESSORIES

**Flashing:** 0.040" (1.016 mm) thick to 0.063" (1.60 mm) aluminum

**Coping:** Wall copings may be produced with the same material as the wall panel system

**Furring Channels:** As required for proper mounting of panels

**Fasteners:** Type 304 stainless steel or cadmium-plated as recommended

**Shims:** High impact thermally-broken plastic shims to maintain co-planer surfaces

## WARRANTY

**Material & Workmanship:** 1-year standard, with 2- or 5-year options

**Finish Integrity:** 10-year standard and up to 20-year for coated aluminum

## Case Studies

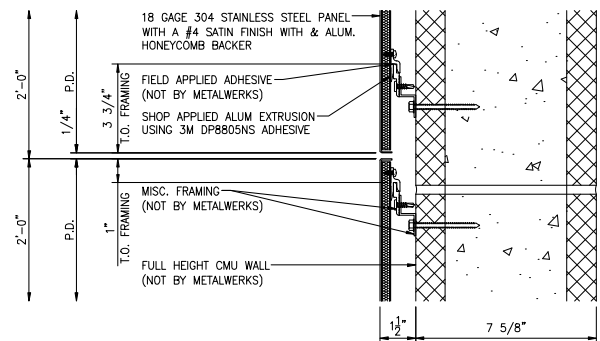
### PORT OF MIAMI TUNNEL - MIAMI, FL

Calling for highly durable cladding for the tunnel's curved inner walls, the solution was found in Metalwërks Arcwall™ plate system. Comprised of curved and factory-finished aluminum plate panels, curved structural aluminum mullion framing, pressure plates, snap covers, and anchorage system, the 220,000 square foot Arcwall integrated architectural system now beautifully clads this high-traffic thoroughfare.

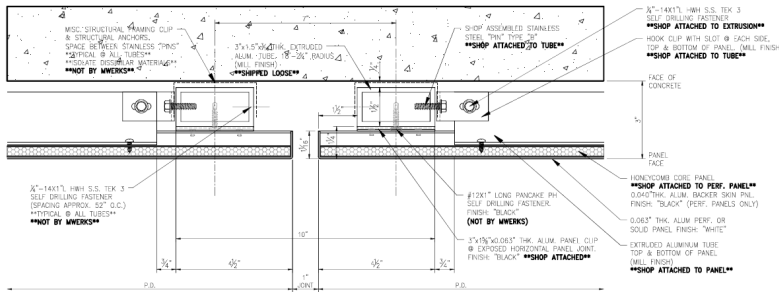
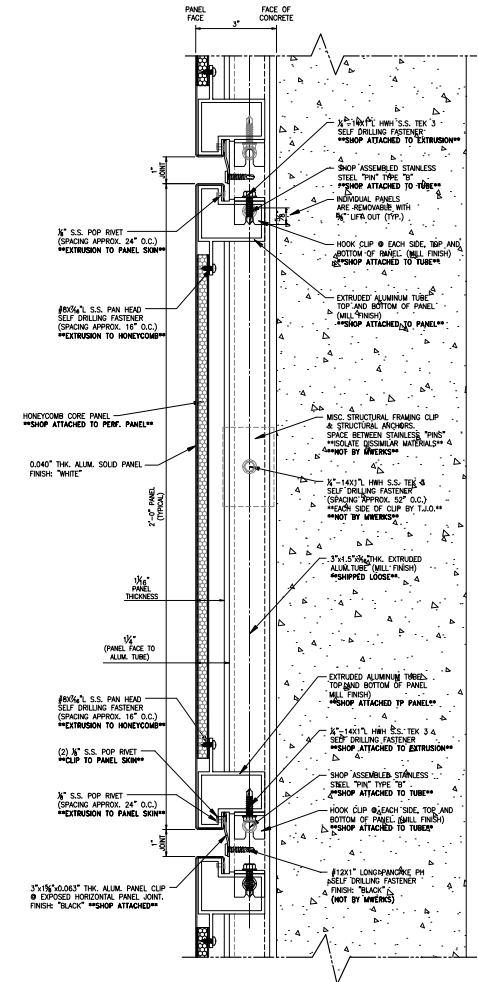


### GRAND CENTRAL TERMINAL, MADISON STATION - NEW YORK, NY (MANHATTAN)

Metalwërks was chosen to fabricate 123,500 square feet of flat and curved aluminum assemblies to line 4,600 linear feet of tunnel walls. The system included perforated panels in three different patterns as well as solid panels. Additionally, Metalwërks supplied 73,000 square feet of stainless-steel cladding for elevator, escalator, and stair enclosures; smoke and exhaust shafts; and connecting concourses.

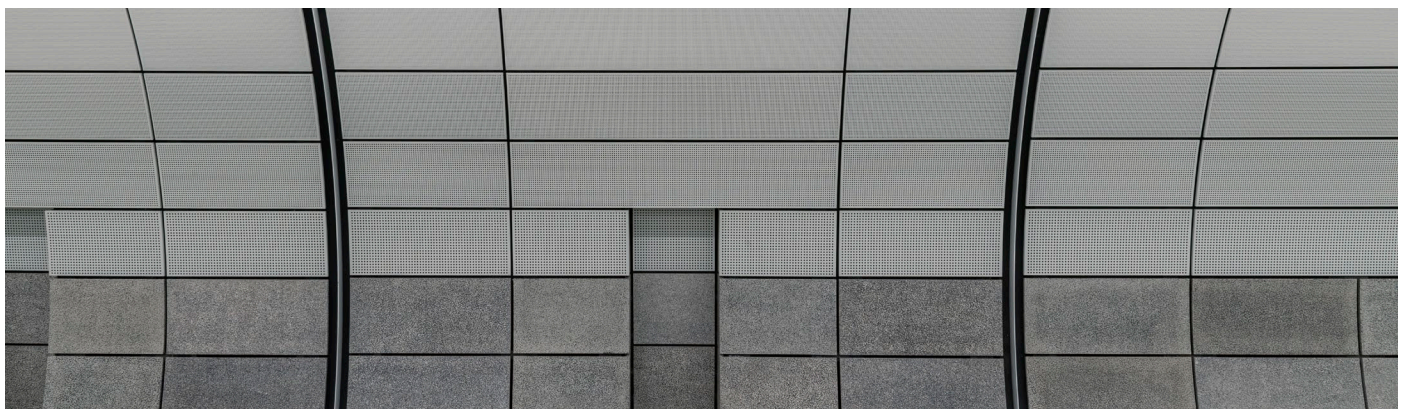


2 Horizontal Joint



**1** JOINT PANEL VIEW - PLAN/SECTION  
AR-1450 0.063" PANELS (UPPER LEVEL)

**8** SECTION VIEW - 0.040" SOLID PANELS  
AR-1451 NON-CURVED PANELS (LOWER LEVEL)

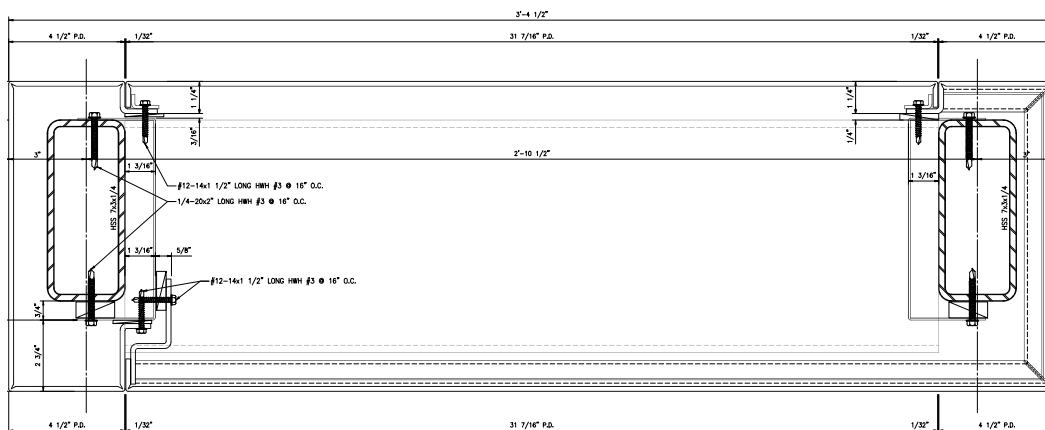


## INTERNATIONAL MONETARY FUND HEADQUARTERS – WASHINGTON, DC

This renovated building now features various forms of Metalwërks interior cladding throughout its atrium and gallery lobby, including atrium column, spandrel, and canopy enclosures, elevator lobbies, feature walls, planter enclosures, trellises, and monumental stairs.

The project encompassed over 26,000 square feet of custom applications using 3/16" aluminum plate panels employing back-routed technology to create "sharp corner" bends down to a 0.040-inch radius. Panels are finished in a stunning PPG Sunstorm Champagne Mica and feature custom butt and "bar reveals" unique to the architectural design.

The project's custom enclosures include sophisticated access panels, sprinkler, lighting, and diffuser reveals, all requiring precision design and fabrication under very tight tolerances by Metalwërks.

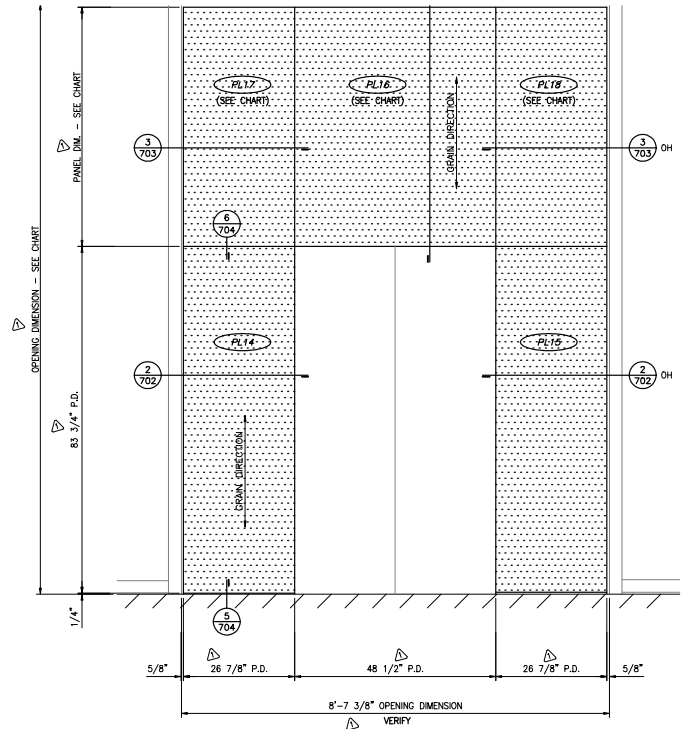


3 2nd Floor Trellis  
M-Line (M8A1)



## MIAMI INTERNATIONAL AIRPORT TERMINAL D – MIAMI, FL

Featuring nearly 40,000 square feet of 14 gauge textured Rimex, 14 gauge #4 satin-brushed stainless steel, and .080 aluminum silver-painted wall panel materials, this project included multiple types of enclosures surrounding column covers, passenger gate portals, FIDS and media centers, escalators as well as concourse wainscot and wall cladding, all of which were precision designed and fabricated by Metalwërks.



**5 PASSENGER LOADER – EXTERIOR ELEVATION**  
4 AB90



**JOHNS HOPKINS HOSPITAL CLINICAL BUILDING - BALTIMORE, MD**

Known as the Sheikh Zayed Critical Care Tower and Charlotte R. Bloomberg Children’s Center, this project featured 46,000 square feet of 0.125 aluminum Omniplate 1500 wall system and multiple forms of beam, ceiling, and skylight enclosures across a monumental 300’ x 50’ exterior entry canopy. Other areas addressed by Metalwërks include interior lobby ceilings, bridge and elevator lobby enclosures connecting to other hospital wings and parking garages.

